



RUPP|STEVEN

RESIDENTIAL & COMMERCIAL DEVELOPMENT LAND

Location: N & W of 167th St W and W Maple St, Goddard, KS 67052

**LOCATED IN GODDARD CITY LIMITS - NEAR EISENHOWER SCHOOLS
DEVELOPMENT POTENTIAL - LOCATED BETWEEN WICHITA & GODDARD**



Price: \$ 1,621,410 (\$21,000 per acre)

Acres: 77.21 +/- acres

Zoning: Agricultural

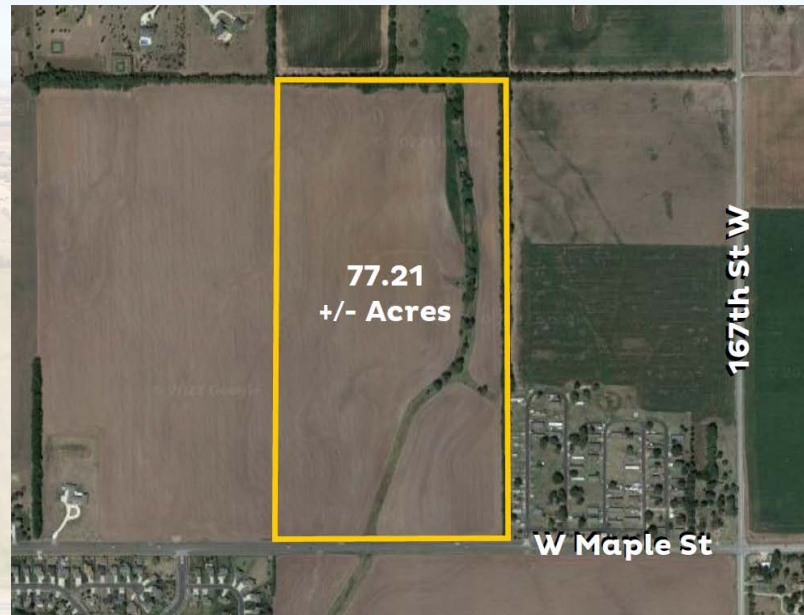
School District: USD 265 - Goddard

Mineral Rights: Seller's interest transfers with the real estate

2021 Taxes: \$767.06

Highlights:

- High Traffic / Visibility Area
- Maple Street Frontage
- Eisenhower Schools to the South
- Close to West Wichita and Goddard Amenities
- Residential & Commercial Development Potential
- Utilities are not guaranteed but believed to be available.



Jake Steven, ALC
316.708.5960
jake@reecenichols.com



John Rupp, ALC
316.250.5198
johnrupp@reecenichols.com



RUPP|STEVEN

RESIDENTIAL & COMMERCIAL DEVELOPMENT LAND

Location: N & W of 167th St W and W Maple St, Goddard, KS 67052



Jake Steven, ALC
316.708.5960
jake@reecenichols.com



John Rupp, ALC
316.250.5198
johnrupp@reecenichols.com