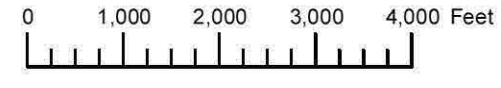


THIS MAP WAS PREPARED FOR ASSESSMENT PURPOSE ONLY

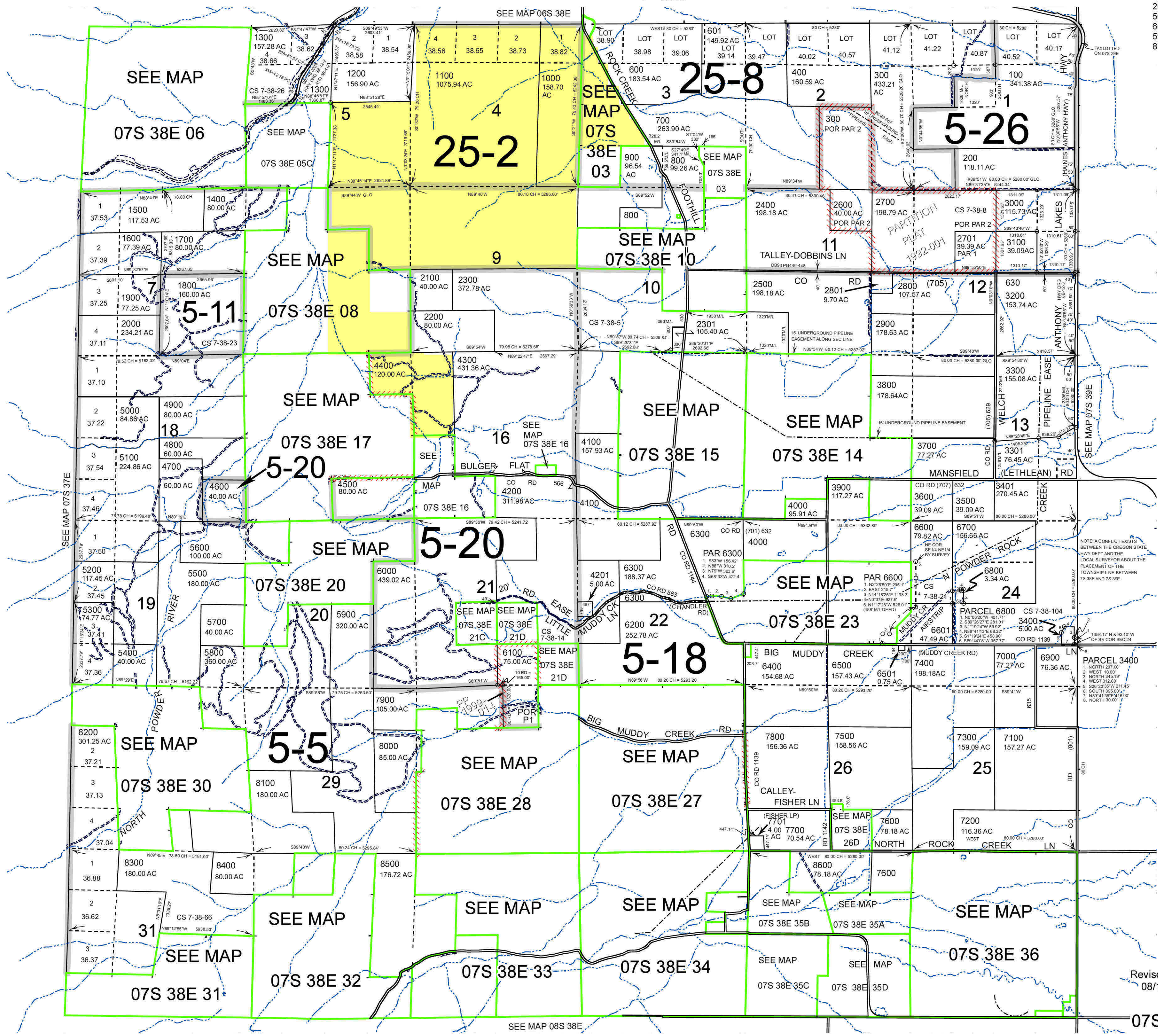


T.7S. R.38E. W.M. BAKER COUNTY

1" = 2000'

07S38E

Cancelled
200
500
600A1
5900M1
8500M1



NOTE: A CONFLICT EXISTS BETWEEN THE OREGON STATE HWY DEPT AND THE LOCAL SURVEYOR ABOUT THE PLACEMENT OF THE TOWNSHIP LINE BETWEEN 7S.38E AND 7S.39E

Revised: DBJ
08/12/2014

07S38E