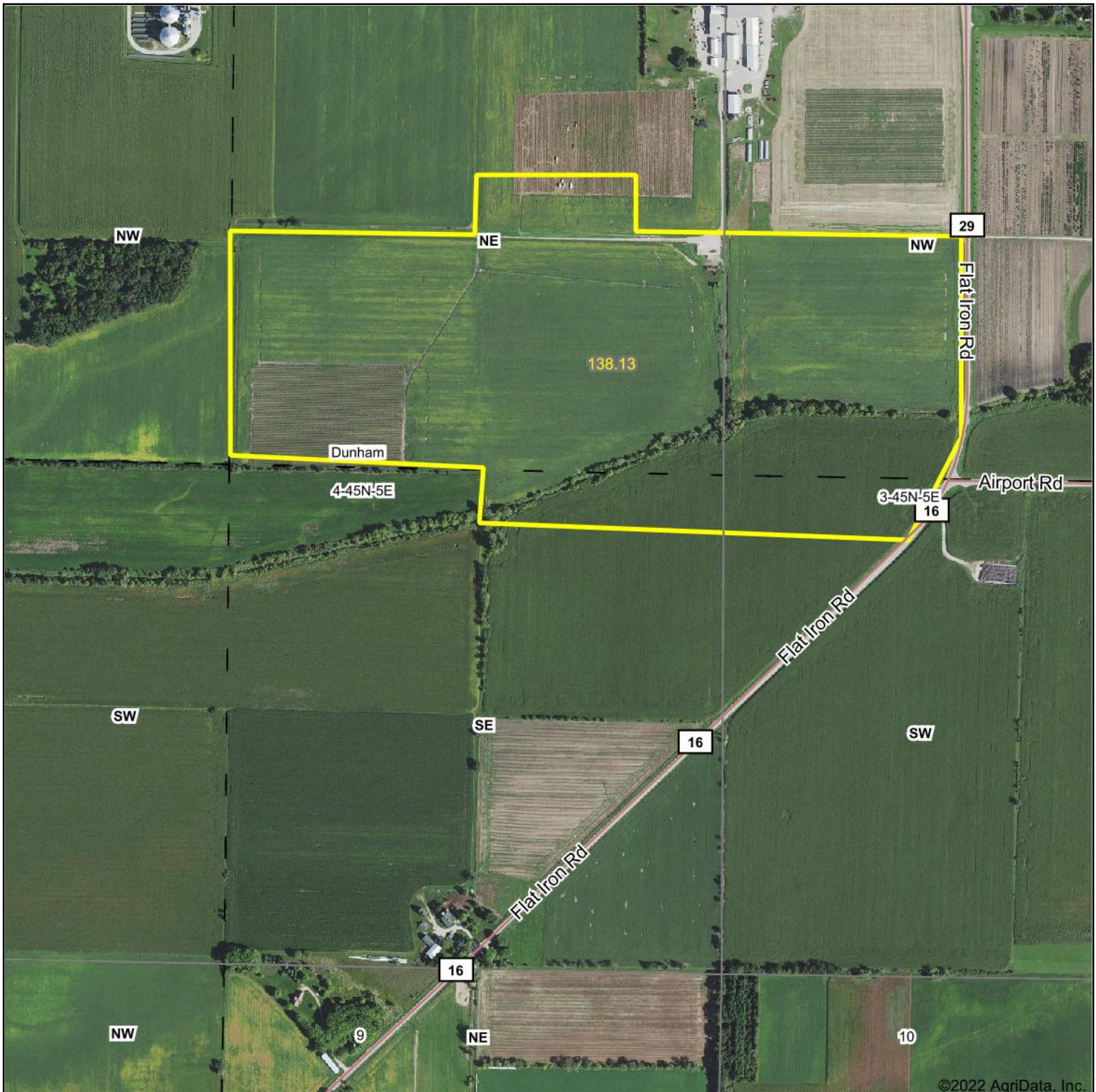
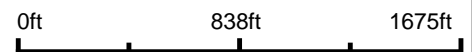


Aerial Map



©2022 AgriData, Inc.

Map Center: 42° 24' 22.67, -88° 39' 2.29



4-45N-5E
McHenry County
Illinois



7/28/2022

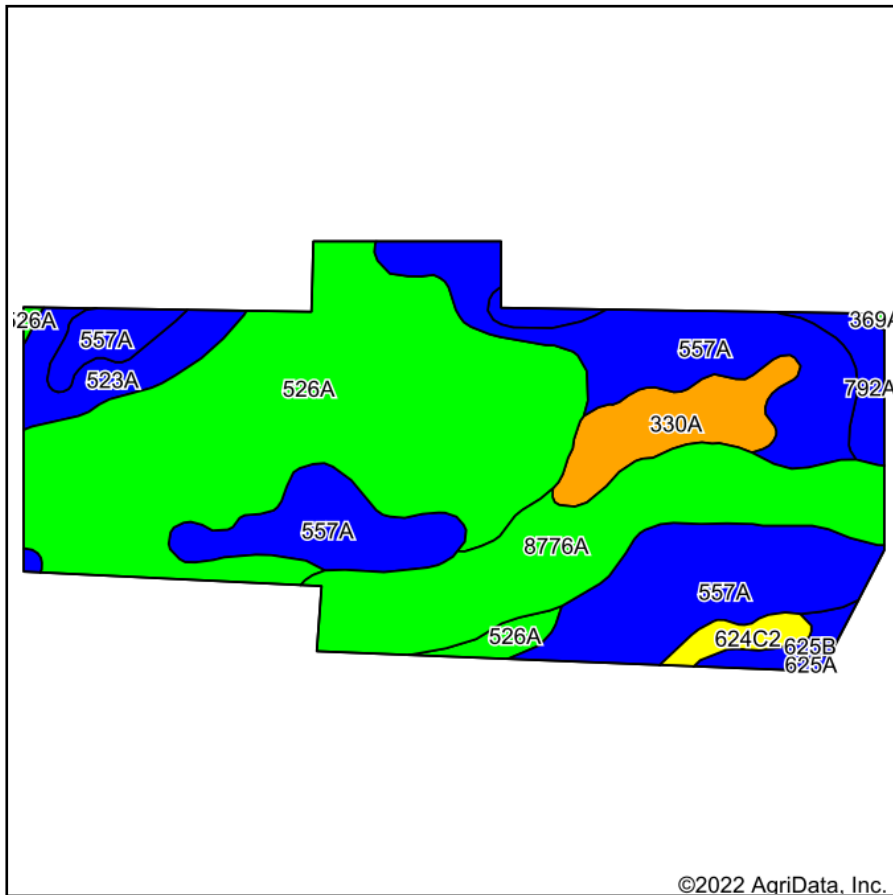
Maps Provided By:



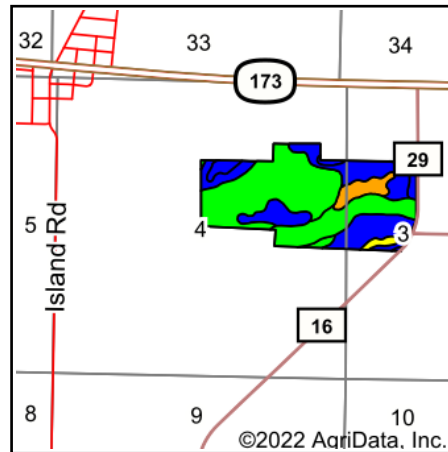
© AgriData, Inc. 2021

www.AgriDataInc.com

Soils Map



Soils data provided by USDA and NRCS.



State: **Illinois**
 County: **McHenry**
 Location: **4-45N-5E**
 Township: **Dunham**
 Acres: **138.13**
 Date: **7/28/2022**

Maps Provided By:

 CUSTOMIZED ONLINE MAPPING
 © AgriData, Inc. 2021 www.AgriDataInc.com



Area Symbol: IL111, Soil Area Version: 17

Code	Soil Description	Acres	Percent of field	Il. State Productivity Index Legend	Corn Bu/A	Soybeans Bu/A	Wheat Bu/A	Crop productivity index for optimum management
526A	Grundelein silt loam, 0 to 2 percent slopes	53.98	39.1%		186	61	71	138
557A	Millstream silt loam, 0 to 2 percent slopes	41.06	29.7%		179	56	69	130
8776A	Comfrey loam, 0 to 2 percent slopes, occasionally flooded	22.40	16.2%		185	61	69	138
330A	Peotone silty clay loam, 0 to 2 percent slopes	7.43	5.4%		164	55	61	123
523A	Dunham silty clay loam, 0 to 2 percent slopes	5.68	4.1%		177	58	69	132
792A	Bowes silt loam, 0 to 2 percent slopes	3.63	2.6%		176	57	71	130
**624C2	Caprell silt loam, 4 to 6 percent slopes, eroded	1.94	1.4%		**149	**48	**57	**109
**625B	Geryune silt loam, 2 to 5 percent slopes	1.72	1.2%		**183	**58	**70	**136
625A	Geryune silt loam, 0 to 2 percent slopes	0.19	0.1%		185	59	71	137
369A	Wapecan silt loam, 0 to 2 percent slopes	0.10	0.1%		189	59	74	139
Weighted Average					181.4	58.7	69.3	133.9

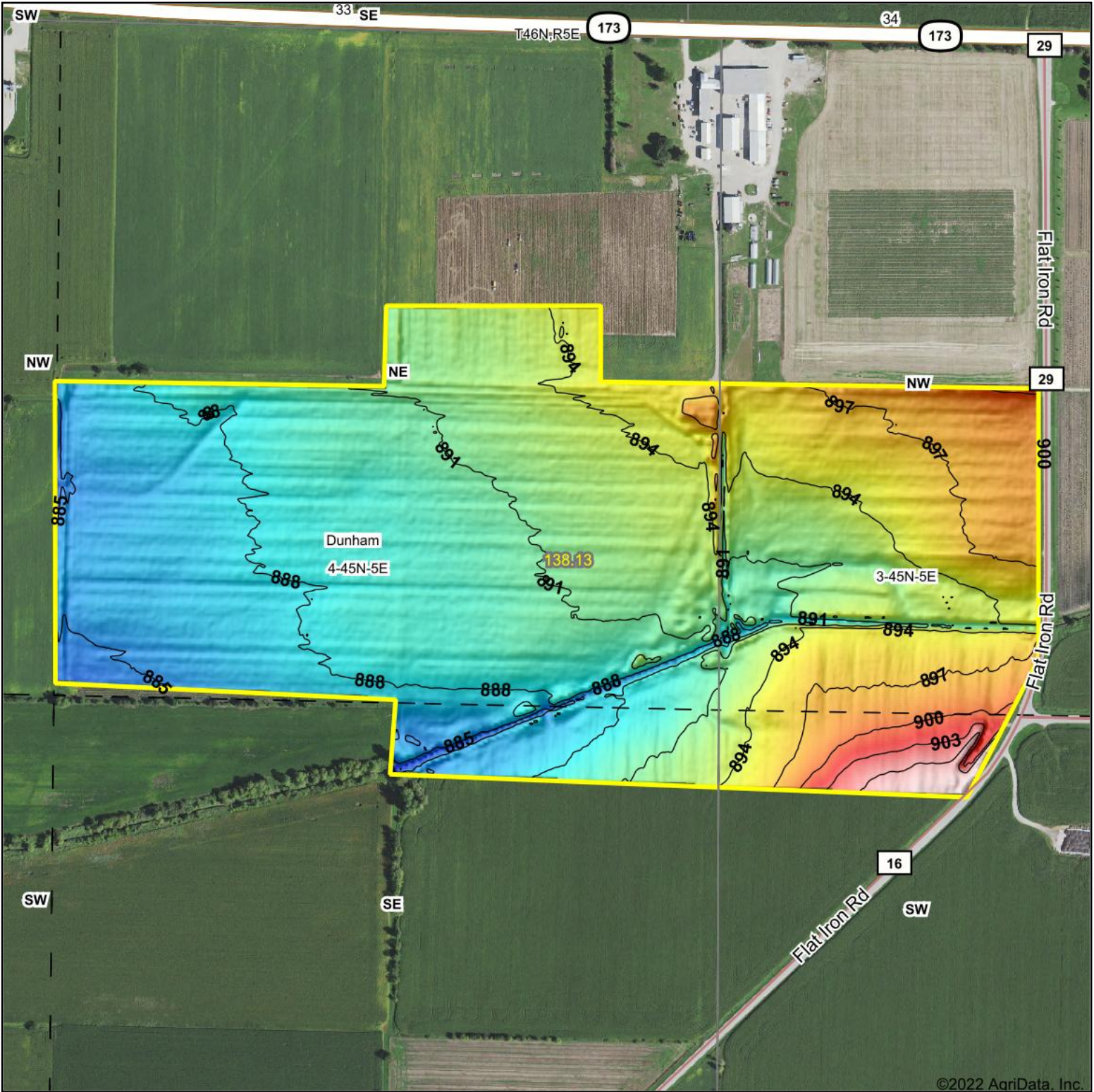
Table: Optimum Crop Productivity Ratings for Illinois Soil by K.R. Olson and J.M. Lang, Office of Research, ACES, University of Illinois at Champaign-Urbana. Version: 1/2/2012 Amended Table S2 B811

Crop yields and productivity indices for optimum management (B811) are maintained at the following NRES web site: <http://soilproductivity.nres.illinois.edu/>

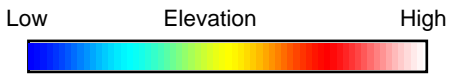
** Indexes adjusted for slope and erosion according to Bulletin 811 Table S3

Soils data provided by USDA and NRCS. Soils data provided by University of Illinois at Champaign-Urbana.

Topography Hillshade



©2022 AgriData, Inc.



Source: USGS 3 meter dem

Interval(ft): 3

Min: 881.3

Max: 908.9

Range: 27.6

Average: 891.7

Standard Deviation: 4.3 ft



7/28/2022

4-45N-5E
McHenry County
Illinois

map center: 42° 24' 22.67, -88° 39' 2.29

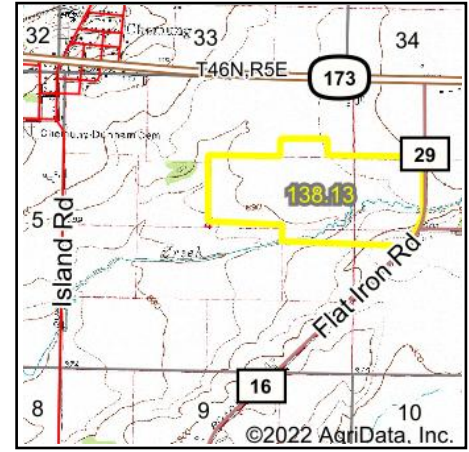
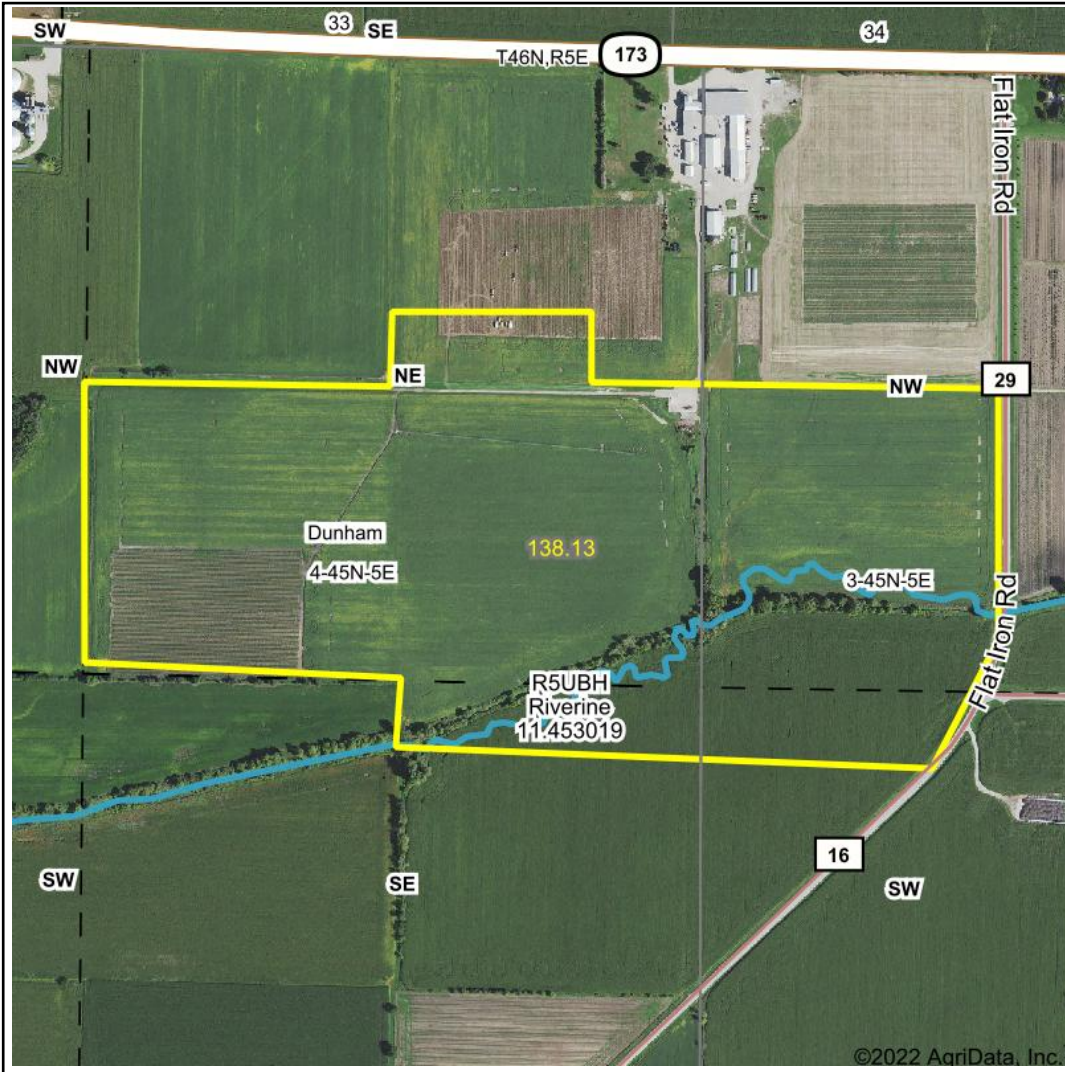
Maps Provided By:



© AgriData, Inc. 2021

www.AgriDataInc.com

Wetlands Map



State: Illinois
Location: 4-45N-5E
County: McHenry
Township: Dunham
Date: 7/28/2022

Maps Provided By:



0ft 949ft 1898ft

Classification Code	Type	Acres
R5UBH	Riverine	2.18
Total Acres		2.18

Data Source: National Wetlands Inventory website. U.S. DoI, Fish and Wildlife Service, Washington, D.C. <http://www.fws.gov/wetlands/>