

73+/- Acres For Sale

Lowcountry Drive (Hwy 462)
Ridgeland, South Carolina 29936

Property Highlights

- Approx. 73 Acres located in between Ridgeland, Beaufort and Bluffton, SC
- Just 10 miles from the highly traveled Exit 21 off I-95
- Wetland determination from 2001 indicates 24,474 acres of federally defined jurisdictional wetlands
- Great access to Bluffton (20 minutes), Beaufort (28 minutes), Hilton Head Island (29 minutes) and Savannah, GA (35 minutes).

Offering Summary

Sale Price:	\$475,000
Lot Size:	73 +/- Acres
Price Per Acre:	\$6,507
Jasper County Zoning:	Rural Preservation
Vehicles Per Day:	9,500

For More Information

Baker Wilkins

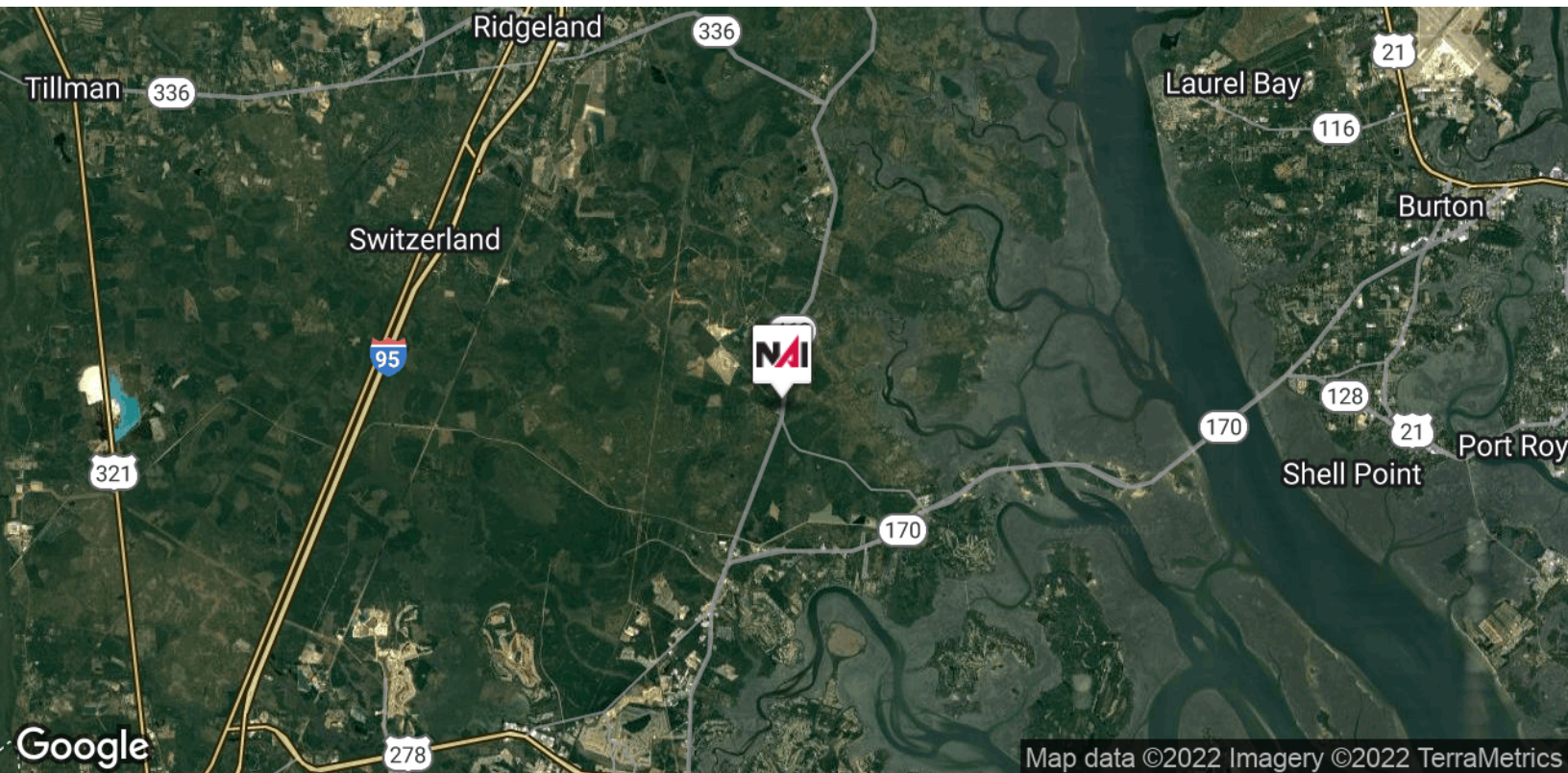
O: 843 837 4460 x2
baker@naicarolinacharter.com

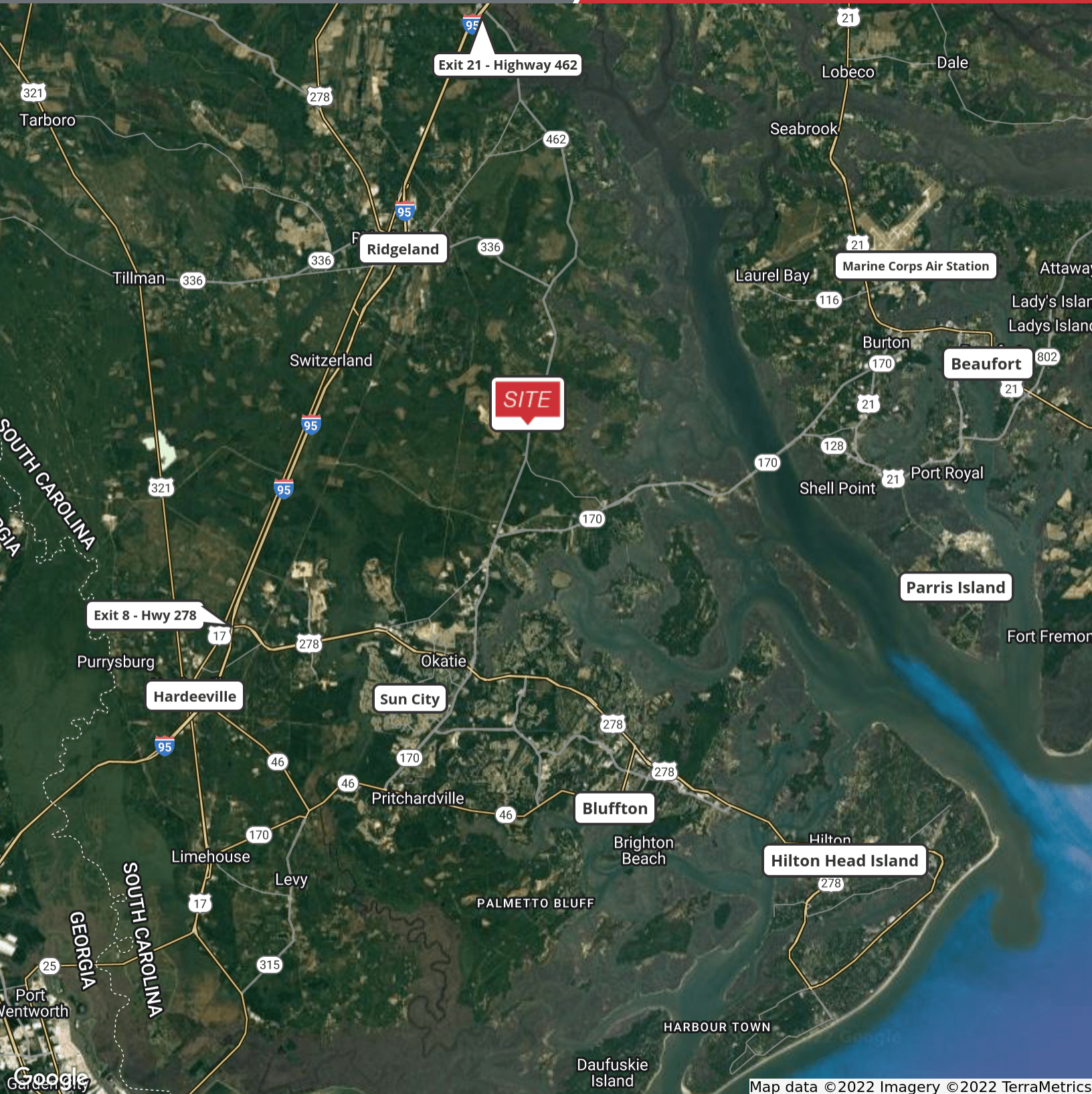
John Gregory, PE, CCIM

O: 803 744 9896
jegregory@naicolumbia.com

Hal Johnson

O: 864 232 9040
hjohnson@naiearlefurman.com

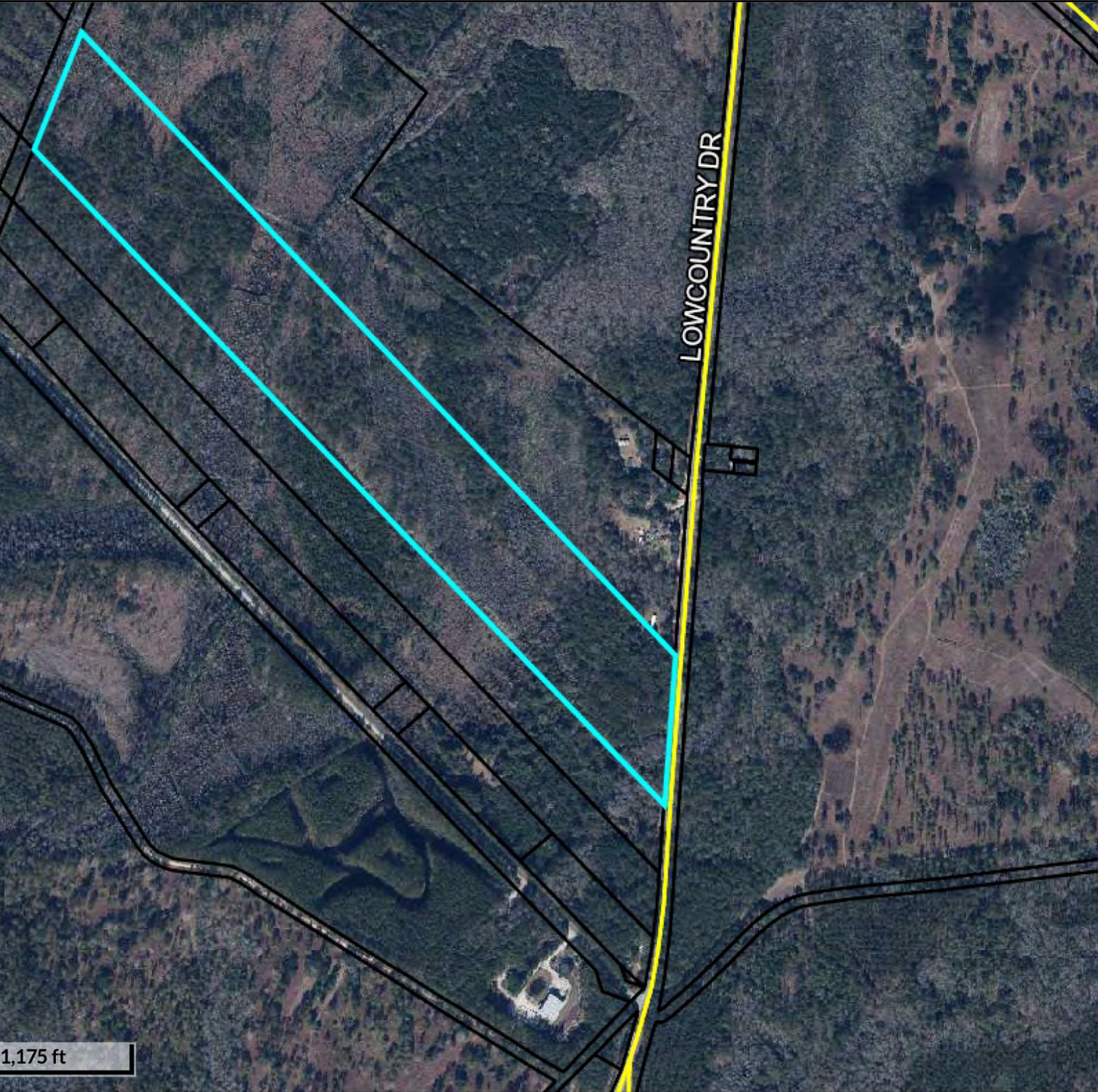


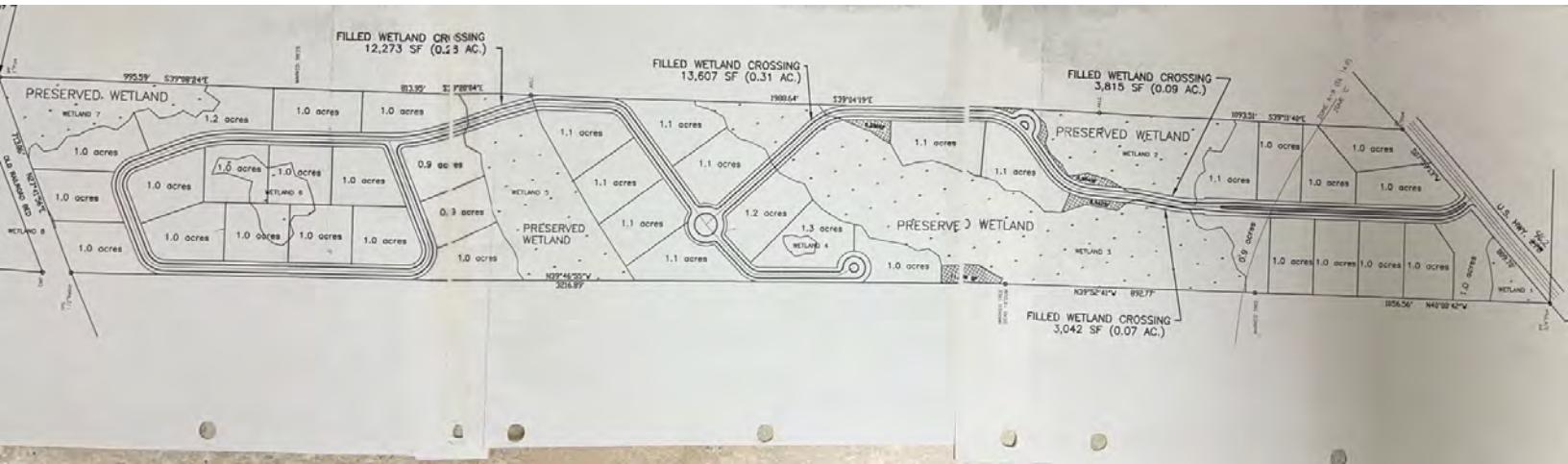


Map data ©2022 Imagery ©2022 TerraMetrics

We obtained the information above from sources we believe to be reliable. However, we have not verified its accuracy and make no guarantee, warranty or representation about it. It is submitted subject to the possibility of errors, omissions, change of price, rental or other conditions, prior sale, lease or financing, or withdrawal without notice. We include projections, opinions, assumptions or estimates for example only, and they may not represent current or future performance of the property. You and your tax and legal advisors should conduct your own investigation of the property and transaction.

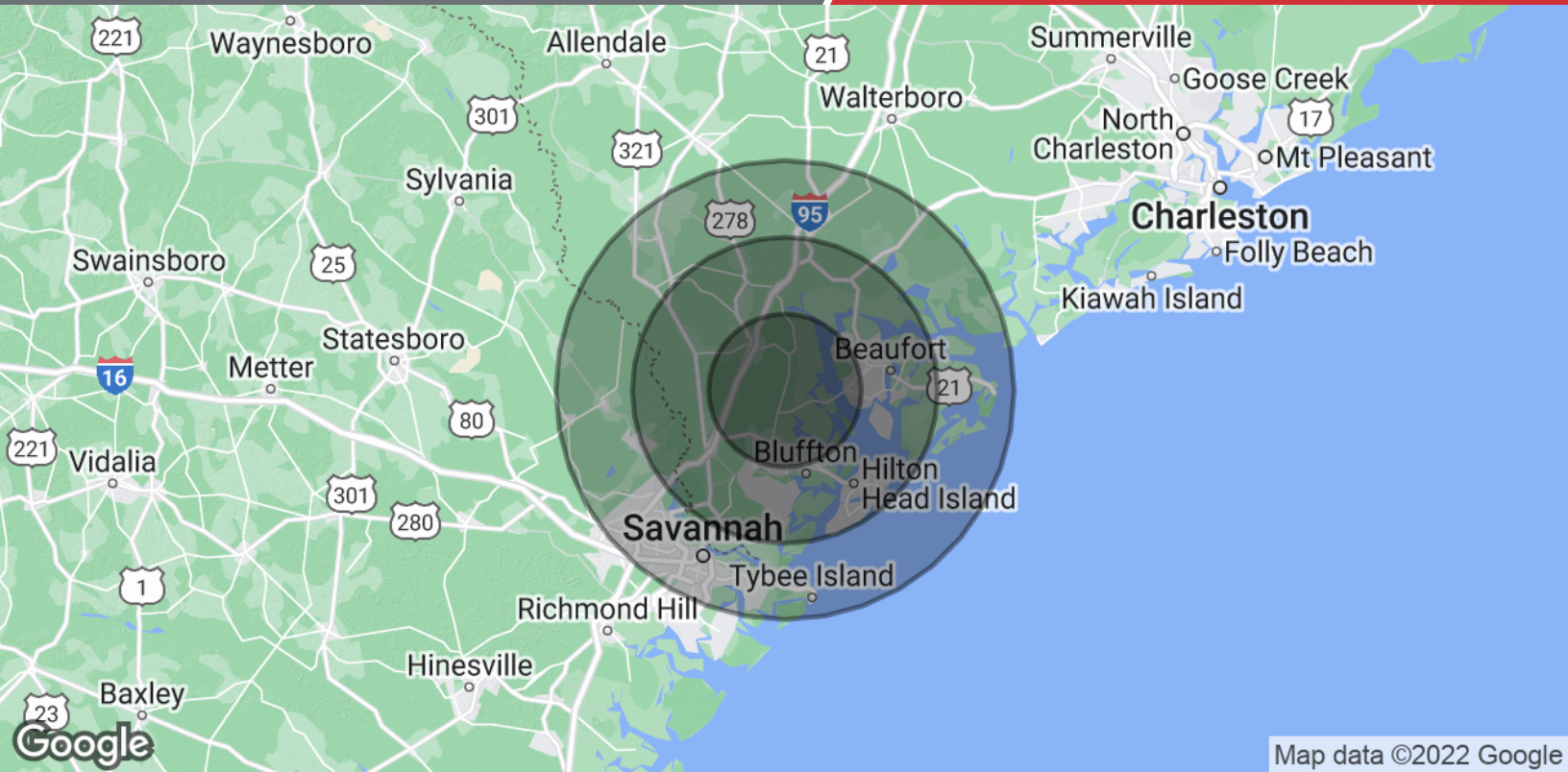
1227 May River Road, Suite 100
Bluffton, SC 29910
843 837 4460 tel
naicarolinacharter.com





We obtained the information above from sources we believe to be reliable. However, we have not verified its accuracy and make no guarantee, warranty or representation about it. It is submitted subject to the possibility of errors, omissions, change of price, rental or other conditions, prior sale, lease or financing, or withdrawal without notice. We include projections, opinions, assumptions or estimates for example only, and they may not represent current or future performance of the property. You and your tax and legal advisors should conduct your own investigation of the property and transaction.

1227 May River Road, Suite 100
Bluffton, SC 29910
843 837 4460 tel
naicarolinacharter.com



Map data ©2022 Google

Population	10 Miles	20 Miles	30 Miles
Total Population	46,856	185,949	427,016
Average Age	43.3	39.9	37.8
Average Age (Male)	43.1	39.3	36.9
Average Age (Female)	43.5	40.3	38.6
Households & Income	10 Miles	20 Miles	30 Miles
Total Households	19,427	72,811	165,801
# of Persons per HH	2.4	2.6	2.6
Average HH Income	\$73,419	\$76,083	\$65,980
Average House Value	\$266,110	\$330,746	\$297,188

* Demographic data derived from 2010 US Census