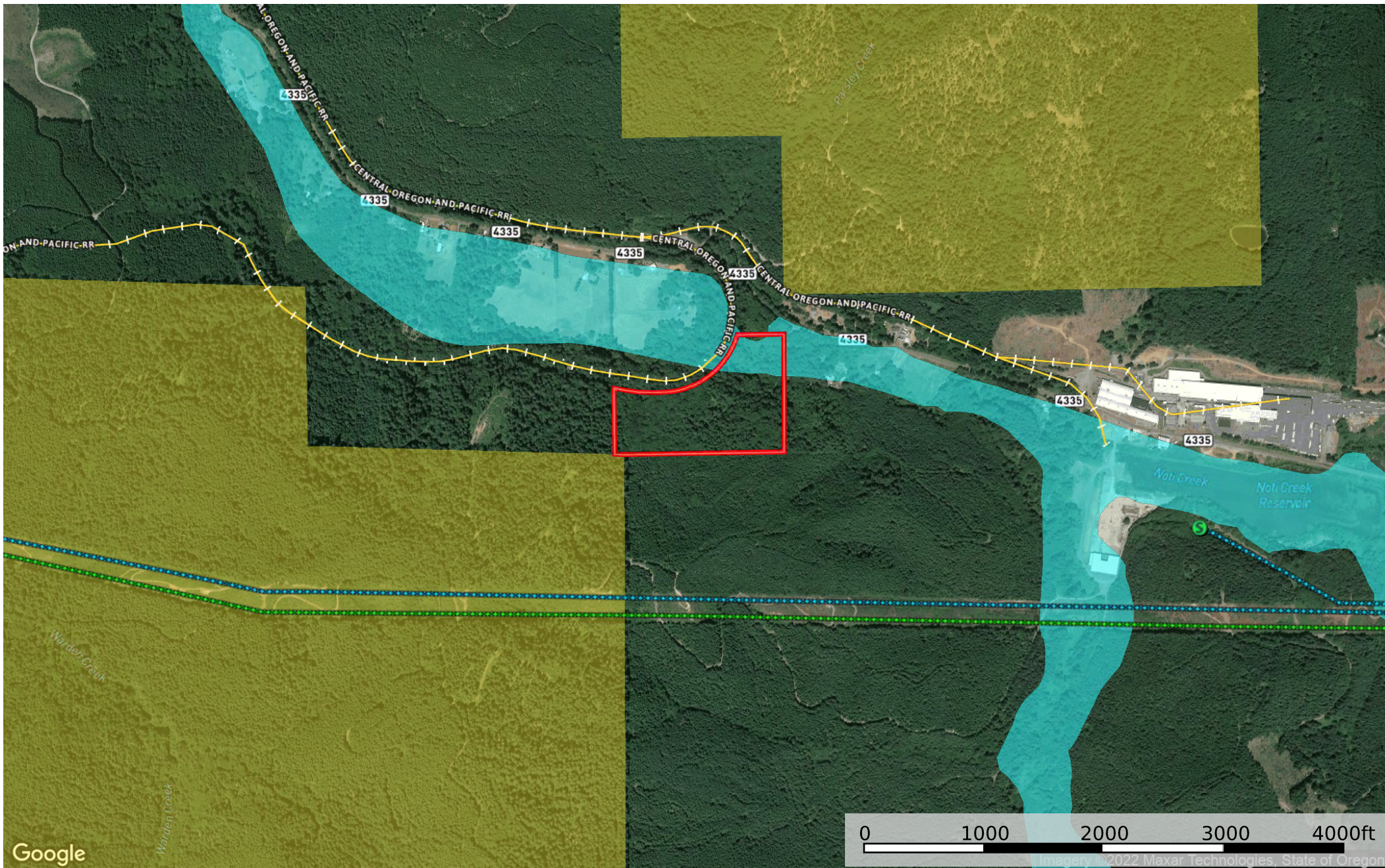









Vaughn Road 22.7 Acres +/-
T18S R06W Sec. 08 TL901 Lane County, Oregon



-  Vaughn Road
-  BLM
-  100 Year Floodplain
-  Substations
-  Voltage 220 - 287 KV
-  Voltage 100 -161 KV

 The information contained herein was obtained from sources deemed to be reliable. MapRight Services makes no warranties or guarantees as to the completeness or accuracy thereof.