

TOMMIE



Since 1952

DAWSON REALTY

For Sale

8.4 ac Warehouse / Distribution Site

Brooksville, Florida

Asking: \$550,000



Linda N Barry DMD

**Parcel 1: 3.54 acres Pad Ready Net Useable**

**Zoned: Commercial C-2 (City)**

**Access: Whitfield Dr**

**Parcel 2: 4.88 acres**

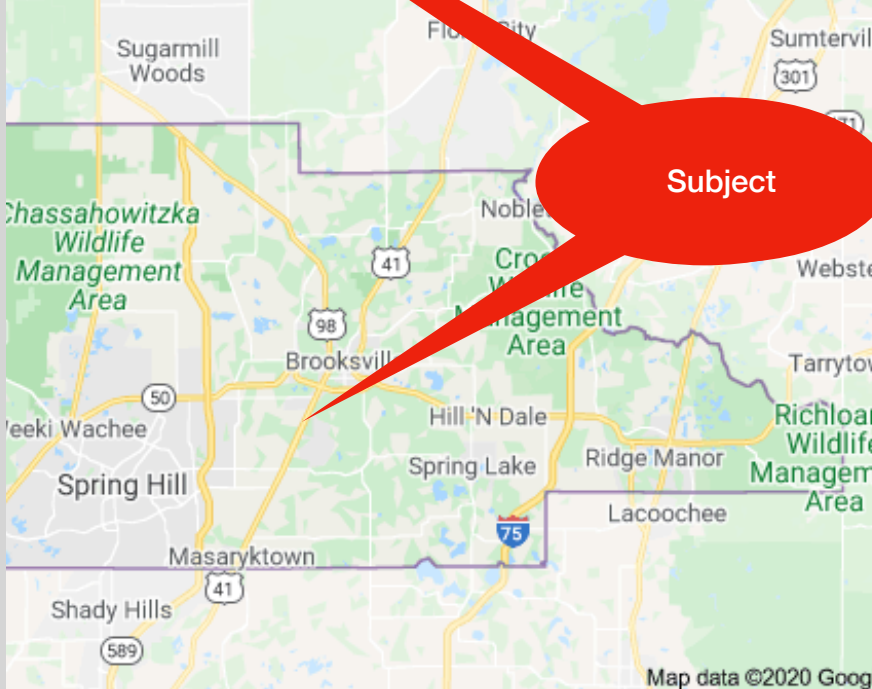
**Zoned: Agriculture (County)**

**Access: 174 ff Cortez**

**All Utilities Available (City of Brooksville)**

**Great Location for Warehouse/  
Distribution/Storage/ Truck Terminal/  
Landscape Contractor**

**Real Estate Tax 2021: \$9,610/yr**



Subject

Map data ©2020 Google

FACING NORTH



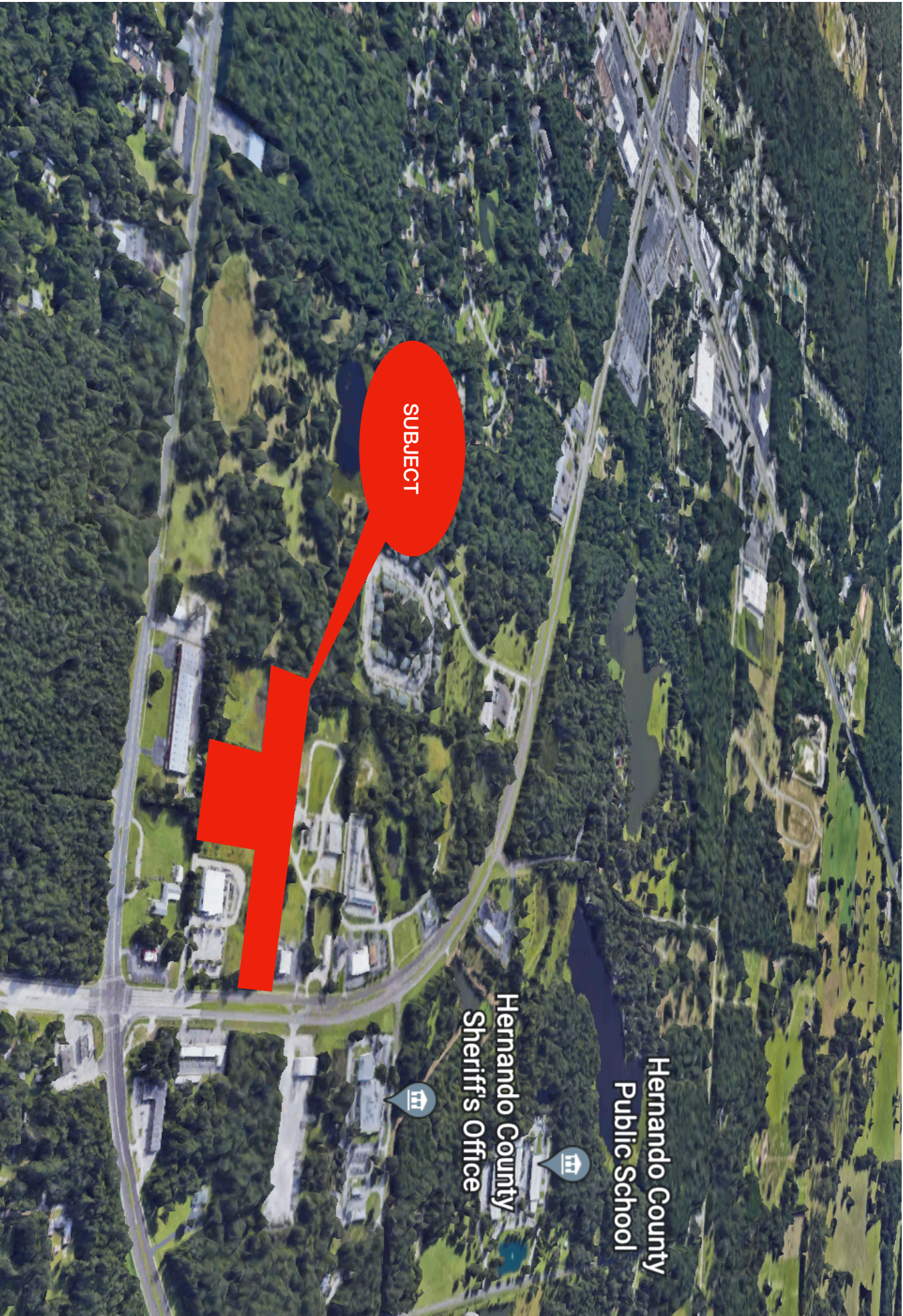
Hernando County  
Public School

North  
Brooksville

SUBJECT

Va

FACING SOUTH



SUBJECT

Hernando County  
Public School

Hernando County  
Sheriff's Office