

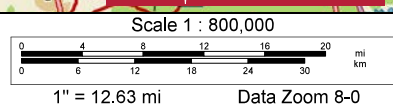
All information is assumed to be accurate and substantially correct but no assumption of liability is intended. Neither the seller nor the agent or representatives warrant the completeness or accuracy of the information. Seller does not guarantee timber volumes, values, acreages (total, woodland/cropland, stand or otherwise), tree ages or the condition and/or function of any improvements, including but not limited to all buildings, machinery, appliances, wells, equipment, livestock and ponds. No representatives or warranties are expressed or implied as to the property, its condition, boundaries or logging feasibility. Prospective buyers should satisfy themselves as to the accuracy of this information.

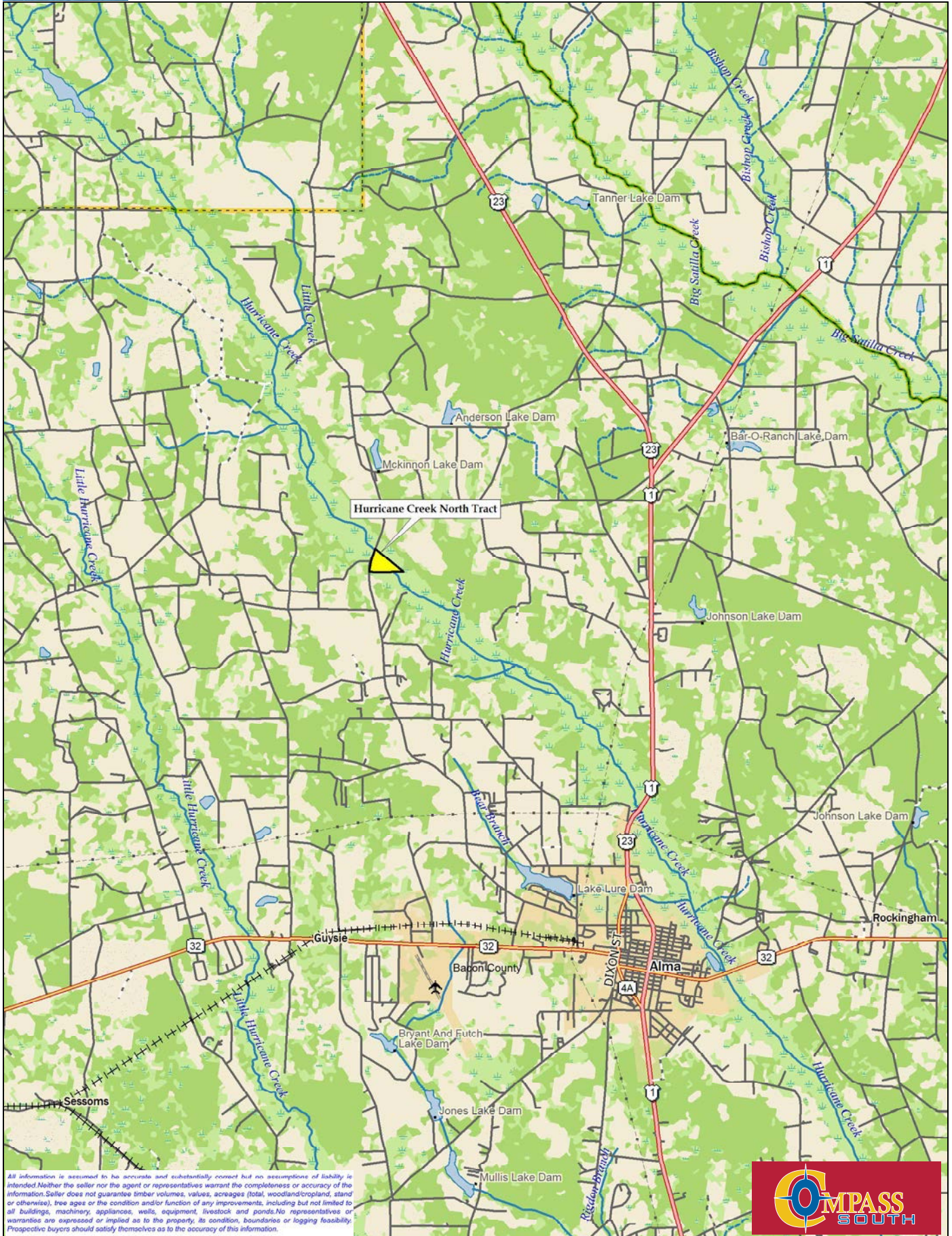


Data use subject to license.

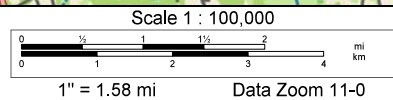
© DeLorme. XMap® 5.2 GIS Enterprise.

www.delorme.com





All information is assumed to be accurate and substantially correct but no assumption of liability is intended. Neither the seller nor the agent or representatives warrant the completeness or accuracy of the information. Seller does not guarantee timber volumes, values, acreages (total, woodland/cropland, stand or otherwise), tree ages or the condition and/or function of any improvements, including but not limited to all buildings, machinery, appliances, wells, equipment, livestock and ponds. No representatives or warranties are expressed or implied as to the property, its condition, boundaries or logging feasibility. Prospective buyers should satisfy themselves as to the accuracy of this information.



Hurricane Creek North Tract

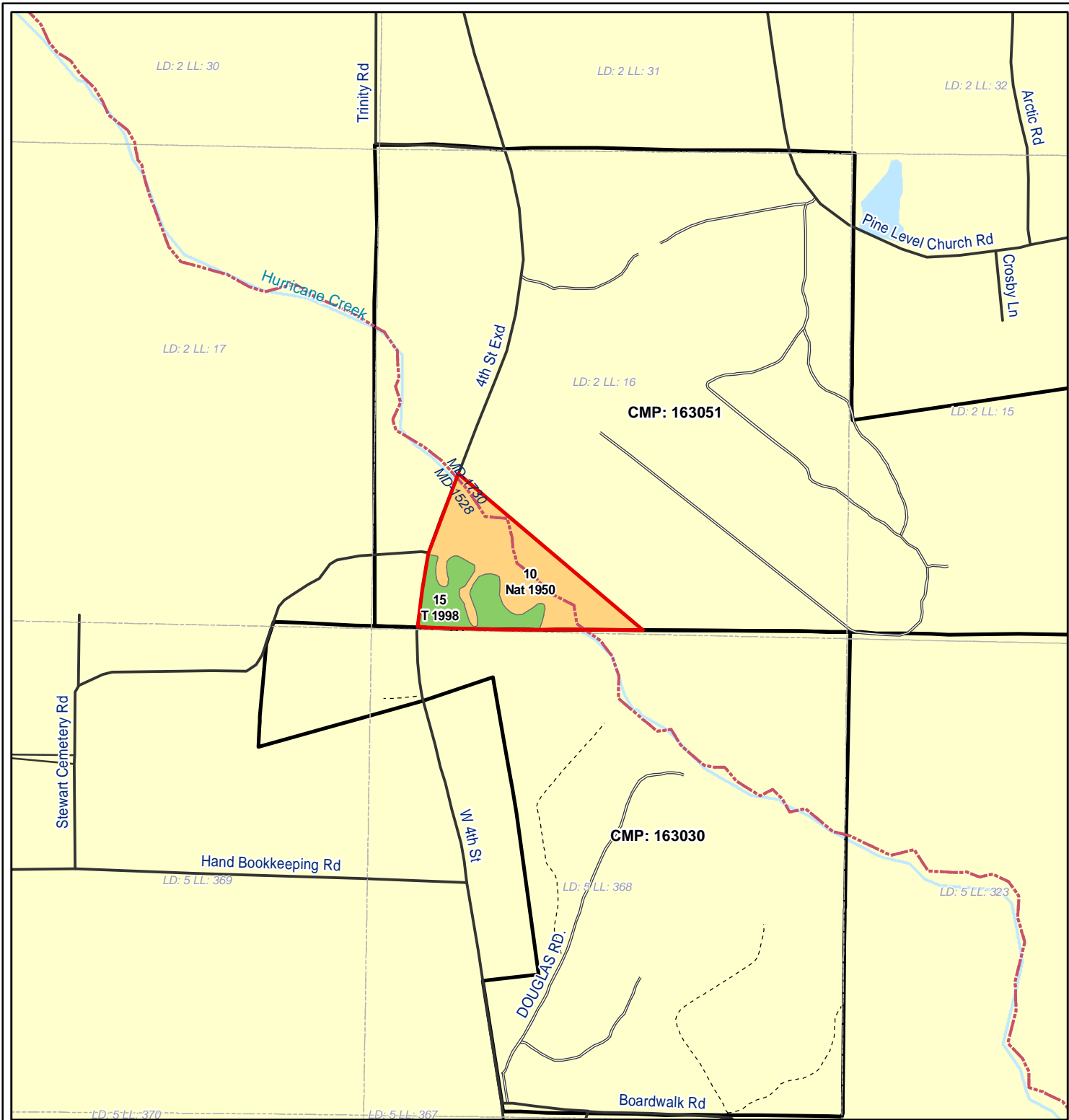
Bacon Co, GA
+/- 38 Acres

W4th St

W4th St



All information is assumed to be accurate and substantially correct but no assumptions of liability is intended. Neither the seller nor the agent or representatives warrant the completeness or accuracy of the information. Seller does not guarantee timber volumes, values, acreages (total, woodland/cropland, stand or otherwise), tree ages or the condition and/or function of any improvements, including but not limited to all buildings, machinery, appliances, wells, equipment, livestock and ponds. No representatives or warranties are expressed or implied as to the property, its condition, boundaries or logging feasibility. Prospective buyers should satisfy themselves as to the accuracy of this information.



- Sale Area
- Plantation Stand Type**
- Merch 15 +
- Natural Stand Type**
- Natural Pine/Hardwood Bottomland

GA Bacon-163030 - 3

07/01/2021

Bacon County, GA

GIS Acres (+/-): 38.0

No warranty or guaranty, either expressed or implied, concerning the property depicted on this map is made by the seller. The information contained on this map is believed to be accurate, but is being furnished for informational purposes only and is not to be relied on by others and should be verified.

