

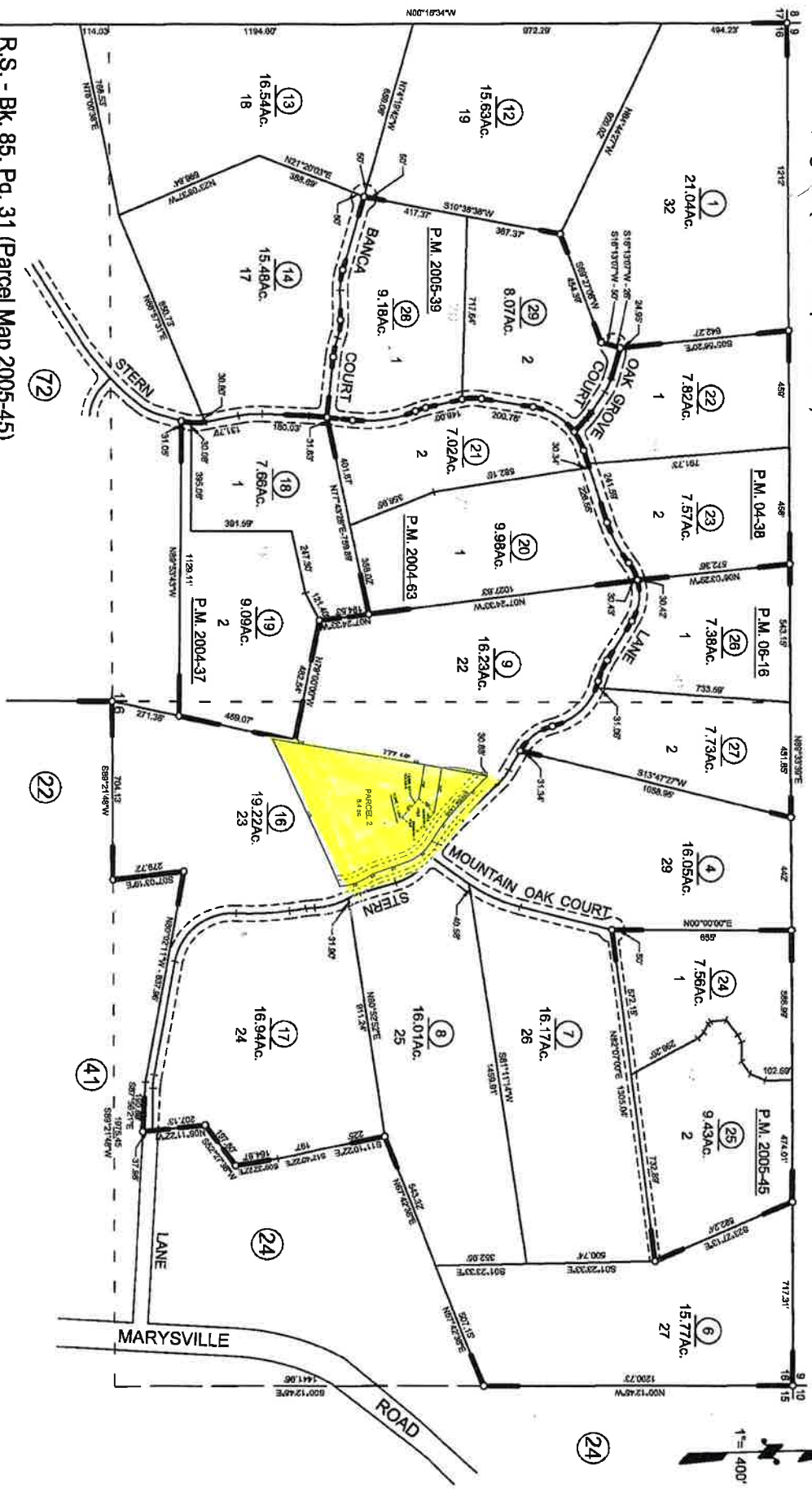
Approximate hot fence in yellow

**POR. OF SECTIONS 16 & 21, T.16N., R.5E., M. D. B. & M.
TRACT 2000-586, THE RIDGE**

Tax Area Code
64-219

5-71

R.S. - Bk. 88, Pg. 14 (Parcel Map 2005-39)
R.S. - Bk. 87, Pg. 39 (Parcel Map 2006-16)



- R.S. - Bk. 85, Pg. 31 (Parcel Map 2005-45)
- R.S. - Bk. 84, Pg. 18 (Parcel Map 2004-38)
- R.S. - Bk. 84, Pg. 3 (Parcel Map 2004-63)
- R.S. - Bk. 83, Pg. 43 (Parcel Map 2004-37)
- R.S. - Bk. 77, Pgs. 15 thru 21 (Tract 2000-586)

NOTE: This map was prepared for assessment purposes only, and is not intended to illustrate legal building sites or establish precedence over local ordinances. Official information concerning size or use of any parcel should be obtained from recorded documents and local governing agencies.

Assessor's Map Bk. 5, Pg. 71
County of Yuba, Calif.
Formerly Ph. 05-240-016
Index - 3
NOTE - Assessor's Block Numbers Shown in Ellipses
Assessor's Parcel Numbers Shown in Circles
(10/2004) **(11/07)**