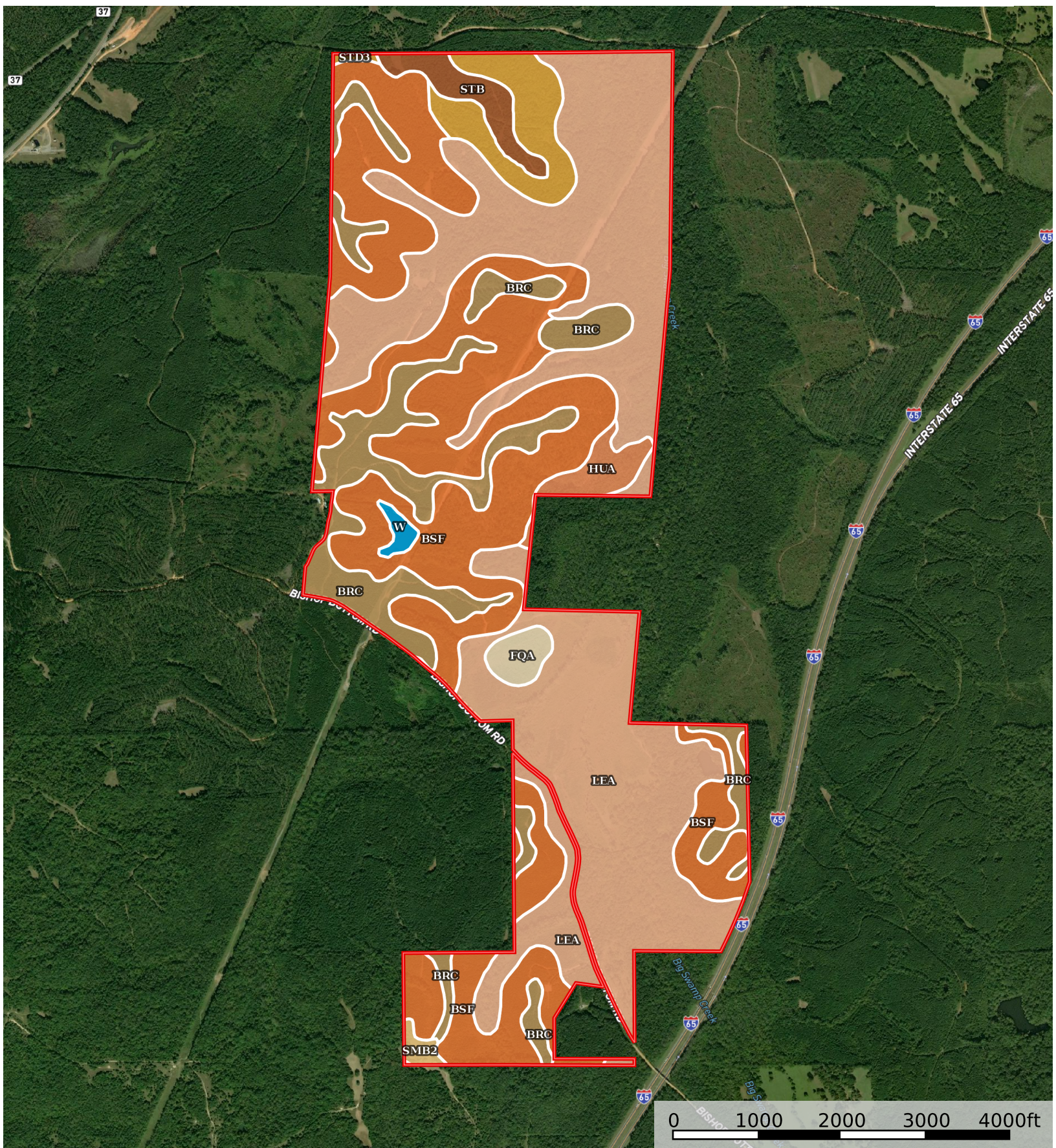



Letohatchee Tract - 895 Acres

Lowndes County, Alabama, 941 AC +/-



 Boundary

|  All Polygons 882.24 ac

SOIL CODE	SOIL DESCRIPTION	ACRES	%	CPI	NCCPI	CAP
LeA	Leeper silty clay loam, 0 to 1 percent slopes, frequently flooded	384.29	43.56	0	53	4w
BsF	Brantley-Smithdale complex, 15 to 30 percent slopes	303.14	34.36	0	17	7e
BrC	Brantley sandy loam, 2 to 8 percent slopes	111.34	12.62	0	69	3e
StD3	Sumter-Hannon complex, 3 to 8 percent slopes, severely eroded	36.82	4.17	0	45	4e
StB	Sumter-Hannon complex, 1 to 3 percent slopes	17.26	1.96	0	52	2e
HuA	Houlka silty clay loam, 0 to 1 percent slopes, frequently flooded	13.35	1.51	0	45	4w
FqA	Fluvaquents silt loam, frequently ponded, 0 to 1 percent slopes, frequently flooded	9.01	1.02	0	11	7w
W	Water	3.52	0.4	0	-	-
SmB2	Sumter silty clay loam, 1 to 3 percent slopes	3.51	0.4	0	51	2e
TOTALS		882.25(*)	100%	-	41.53	4.89

(*) Total acres may differ in the second decimal compared to the sum of each acreage soil. This is due to a round error because we only show the acres of each soil with two decimal.

|  Boundary 786.82 ac

SOIL CODE	SOIL DESCRIPTION	ACRES	%	CPI	NCCPI	CAP
LeA	Leeper silty clay loam, 0 to 1 percent slopes, frequently flooded	356.6	45.32	0	53	4w
BsF	Brantley-Smithdale complex, 15 to 30 percent slopes	249.77	31.74	0	17	7e
BrC	Brantley sandy loam, 2 to 8 percent slopes	100.49	12.77	0	69	3e
StD3	Sumter-Hannon complex, 3 to 8 percent slopes, severely eroded	36.82	4.68	0	45	4e
StB	Sumter-Hannon complex, 1 to 3 percent slopes	17.26	2.19	0	52	2e
HuA	Houlka silty clay loam, 0 to 1 percent slopes, frequently flooded	13.35	1.7	0	45	4w
FqA	Fluvaquents silt loam, frequently ponded, 0 to 1 percent slopes, frequently flooded	9.01	1.15	0	11	7w
W	Water	3.52	0.45	0	-	-
TOTALS		882.25(*)	100%	-	42.36	4.82

(*) Total acres may differ in the second decimal compared to the sum of each acreage soil. This is due to a round error because we only show the acres of each soil with two decimal.

|  Boundary 95.42 ac

SOIL CODE	SOIL DESCRIPTION	ACRES	%	CPI	NCCPI	CAP
BsF	Brantley-Smithdale complex, 15 to 30 percent slopes	53.37	55.93	0	17	7e
LeA	Leeper silty clay loam, 0 to 1 percent slopes, frequently flooded	27.69	29.02	0	53	4w

BrC	Brantley sandy loam, 2 to 8 percent slopes	10.85	11.37	0	69	3e
SmB2	Sumter silty clay loam, 1 to 3 percent slopes	3.51	3.68	0	51	2e
TOTALS		882.25(*)	100%	-	34.61	5.49

(*) Total acres may differ in the second decimal compared to the sum of each acreage soil. This is due to a round error because we only show the acres of each soil with two decimal.

Capability Legend

Increased Limitations and Hazards

Decreased Adaptability and Freedom of Choice Users

Land, Capability

	1	2	3	4	5	6	7	8
'Wild Life'	•	•	•	•	•	•	•	•
Forestry	•	•	•	•	•	•	•	
Limited	•	•	•	•	•	•	•	
Moderate	•	•	•	•	•	•		
Intense	•	•	•	•	•			
Limited	•	•	•	•				
Moderate	•	•	•					
Intense	•	•						
Very Intense	•							

Grazing Cultivation

(c) climatic limitations (e) susceptibility to erosion

(s) soil limitations within the rooting zone (w) excess of water