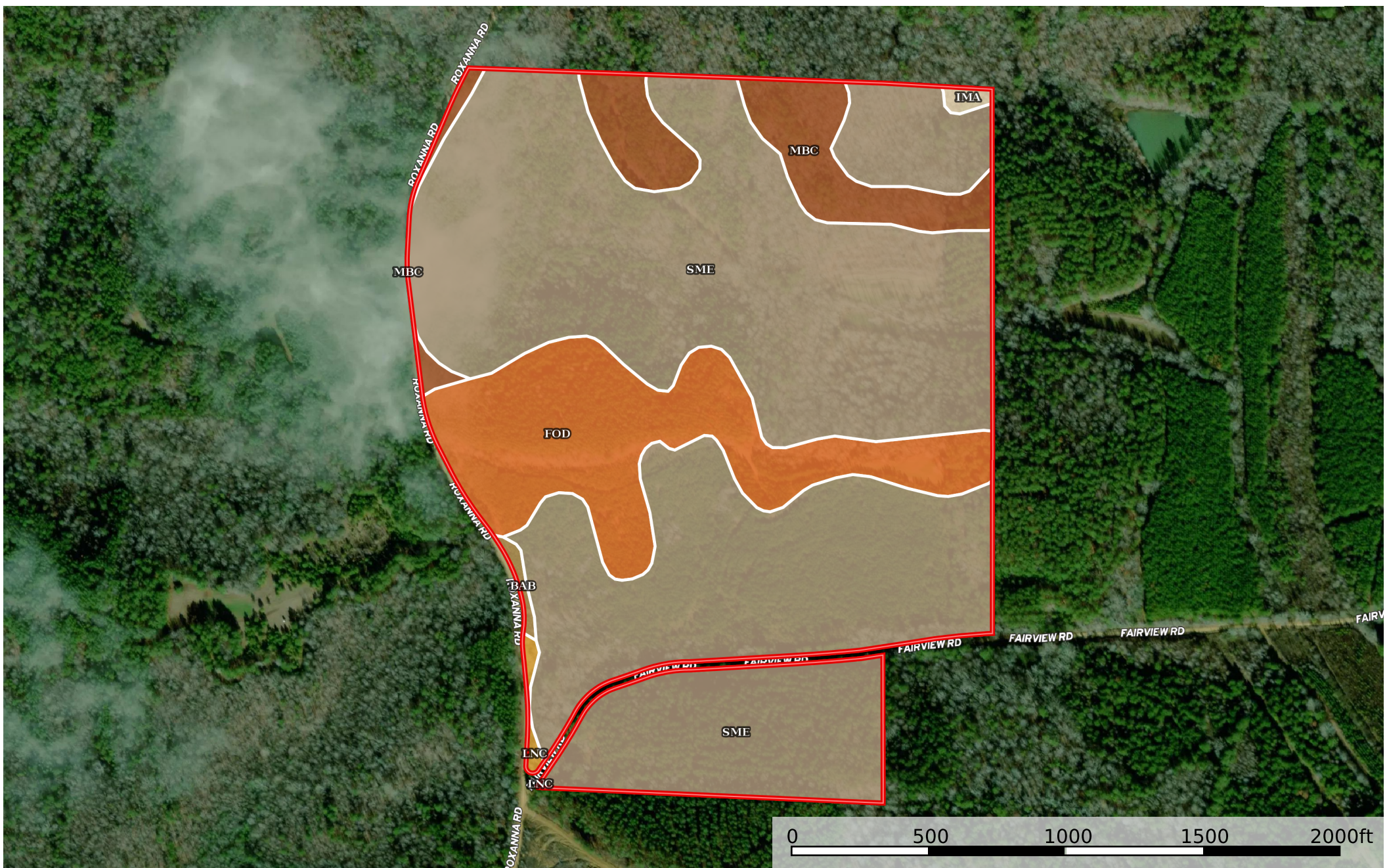


# 100 Acres - Lamar County, AL - Sulligent Hunting and

Lamar County, Alabama, 101 AC +/-



 Boundary



|  All Polygons 108.81 ac

SOIL CODE	SOIL DESCRIPTION	ACRES	%	CPI	NCCPI	CAP
SmE	Smithdale-Luverne-Maubila complex, 15 to 35 percent slopes	82.47	75.8	0	22	7e
FoD	Flomaton gravelly loamy sand, 6 to 15 percent slopes	17.02	15.64	0	15	4s
MbC	Maubila flaggy fine sandy loam, 2 to 8 percent slopes	8.26	7.59	0	53	4e
LnC	Luverne sandy loam, 5 to 8 percent slopes	0.39	0.36	0	66	4e
BaB	Bama loam, 2 to 6 percent slopes	0.35	0.32	0	74	2e
ImA	Iuka-Mantachie complex, 0 to 2 percent slopes, frequently flooded	0.32	0.29	0	64	5w
TOTALS		108.8(*)	100%	-	23.71	6.27

(\*) Total acres may differ in the second decimal compared to the sum of each acreage soil. This is due to a round error because we only show the acres of each soil with two decimal.

|  Boundary 96.87 ac

SOIL CODE	SOIL DESCRIPTION	ACRES	%	CPI	NCCPI	CAP
SmE	Smithdale-Luverne-Maubila complex, 15 to 35 percent slopes	70.54	72.83	0	22	7e
FoD	Flomaton gravelly loamy sand, 6 to 15 percent slopes	17.02	17.57	0	15	4s
MbC	Maubila flaggy fine sandy loam, 2 to 8 percent slopes	8.26	8.53	0	53	4e
LnC	Luverne sandy loam, 5 to 8 percent slopes	0.38	0.39	0	66	4e
BaB	Bama loam, 2 to 6 percent slopes	0.35	0.36	0	74	2e
ImA	Iuka-Mantachie complex, 0 to 2 percent slopes, frequently flooded	0.32	0.33	0	64	5w
TOTALS		108.8(*)	100%	-	23.92	6.18

(\*) Total acres may differ in the second decimal compared to the sum of each acreage soil. This is due to a round error because we only show the acres of each soil with two decimal.

|  Boundary 11.94 ac

SOIL CODE	SOIL DESCRIPTION	ACRES	%	CPI	NCCPI	CAP
SmE	Smithdale-Luverne-Maubila complex, 15 to 35 percent slopes	11.93	99.92	0	22	7e
LnC	Luverne sandy loam, 5 to 8 percent slopes	0.01	0.08	0	66	4e
TOTALS		108.8(*)	100%	-	22.04	7.0









(\*) Total acres may differ in the second decimal compared to the sum of each acreage soil. This is due to a round error because we only show the acres of each soil with two decimal.

## Capability Legend

Increased Limitations and Hazards

Decreased Adaptability and Freedom of Choice Users

Land, Capability

								
	1	2	3	4	5	6	7	8
'Wild Life'	•	•	•	•	•	•	•	•
Forestry	•	•	•	•	•	•	•	
Limited	•	•	•	•	•	•	•	
Moderate	•	•	•	•	•	•		
Intense	•	•	•	•	•			
Limited	•	•	•	•				
Moderate	•	•	•					
Intense	•	•						
Very Intense	•							

### Grazing Cultivation

(c) climatic limitations (e) susceptibility to erosion

(s) soil limitations within the rooting zone (w) excess of water