

STROMER REALTY COMPANY OF CALIFORNIA

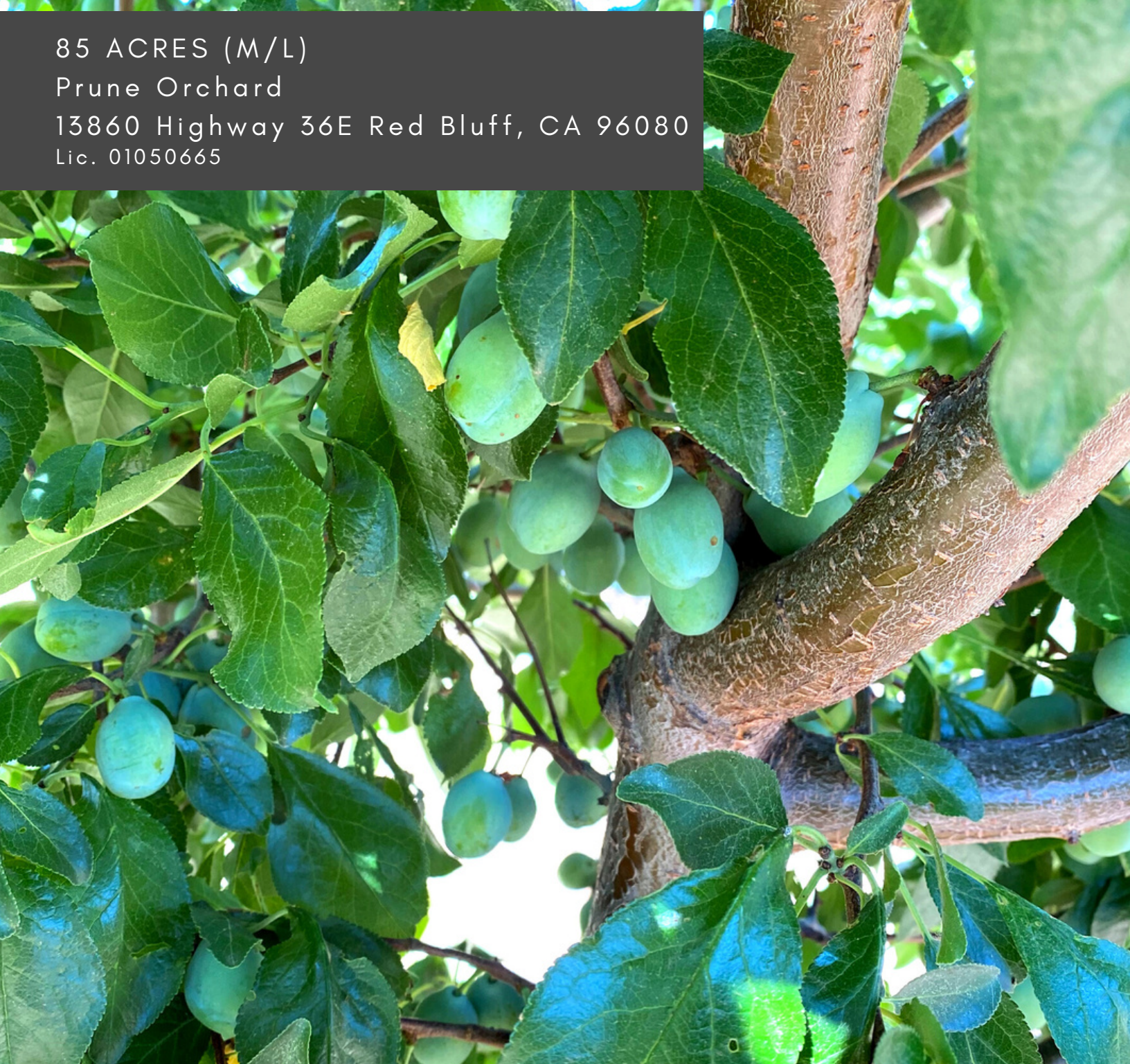


85 ACRES (M/L)

Prune Orchard

13860 Highway 36E Red Bluff, CA 96080

Lic. 01050665



The information contained in this brochure is from reliable sources and is believed to be correct, but is NOT guaranteed.

591 Colusa Ave., Yuba City, CA 95991 | 530.671.2770 | www.stromerrealty.com



Stromer Realty Company of California

Buzz Gill | DRE # 01238633

530.682.8485 (m) | buzz@stromerrealty.com

LOCATION:

The subject property is located at 13860 Highway 36 E in Red Bluff, California. It is only a few miles east of the town of Red Bluff.

EGRESS/INGRESS:

The ranch is easily accessible via Highway 99 or Highway 36 E and has highway frontage on both accesses. (See attached parcel map)

PRUNE ORCHARD:

The prune orchard is approximately 85 acres m/l. The orchard was planted in June of 2016 and is spaced 18'x14'.

WATER AND IRRIGATION:

There are two agricultural wells on the subject property. The orchard is irrigated via microjet irrigation.

SOILS:

See attached solid map.

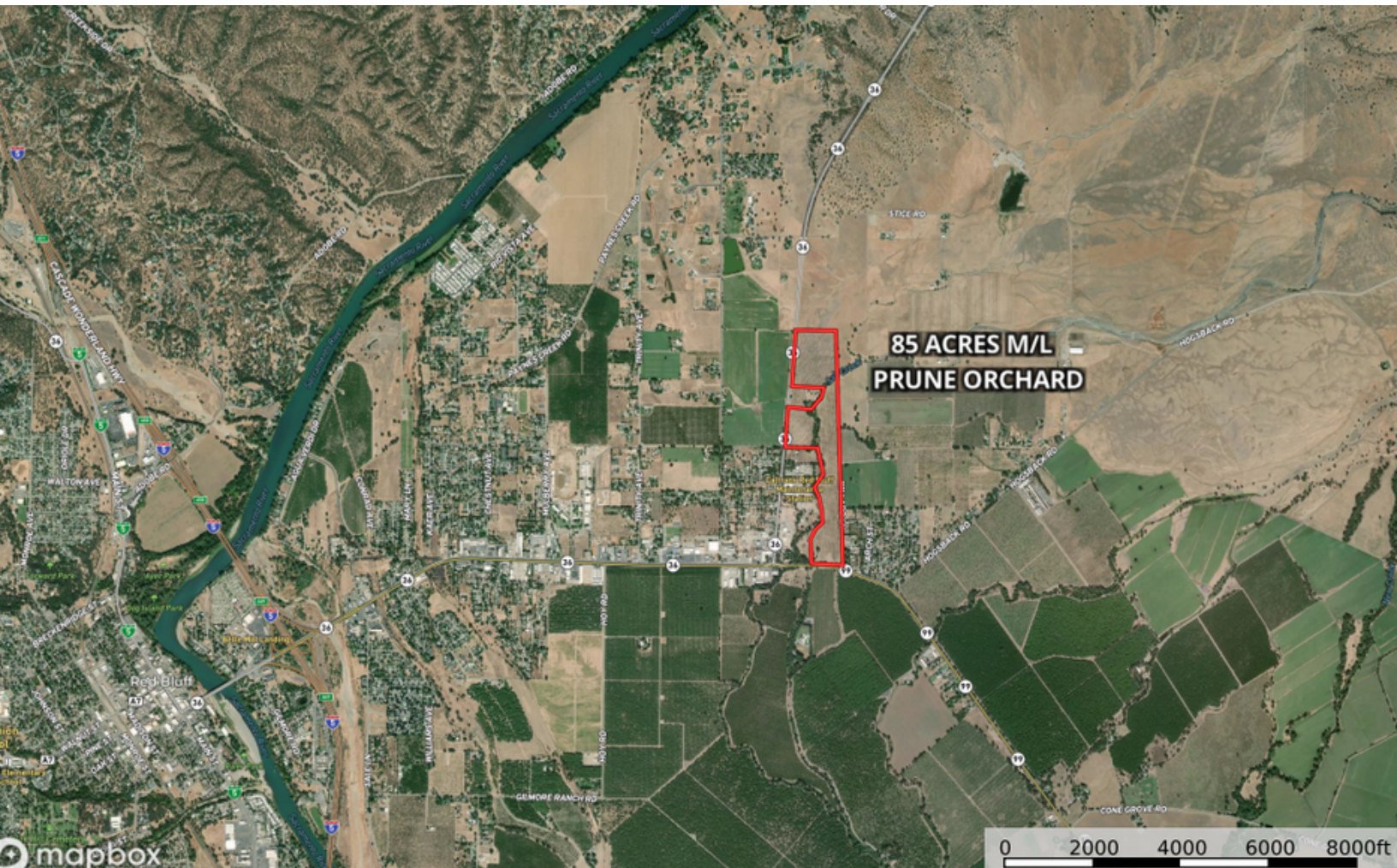
PRICE: \$2,550,000



Stromer Realty Company of California

Buzz Gill | DRE # 01238633

530.682.8485 (m) | buzz@stromerrealty.com



The information contained in this brochure is from reliable sources and is believed to be correct, but is NOT guaranteed.

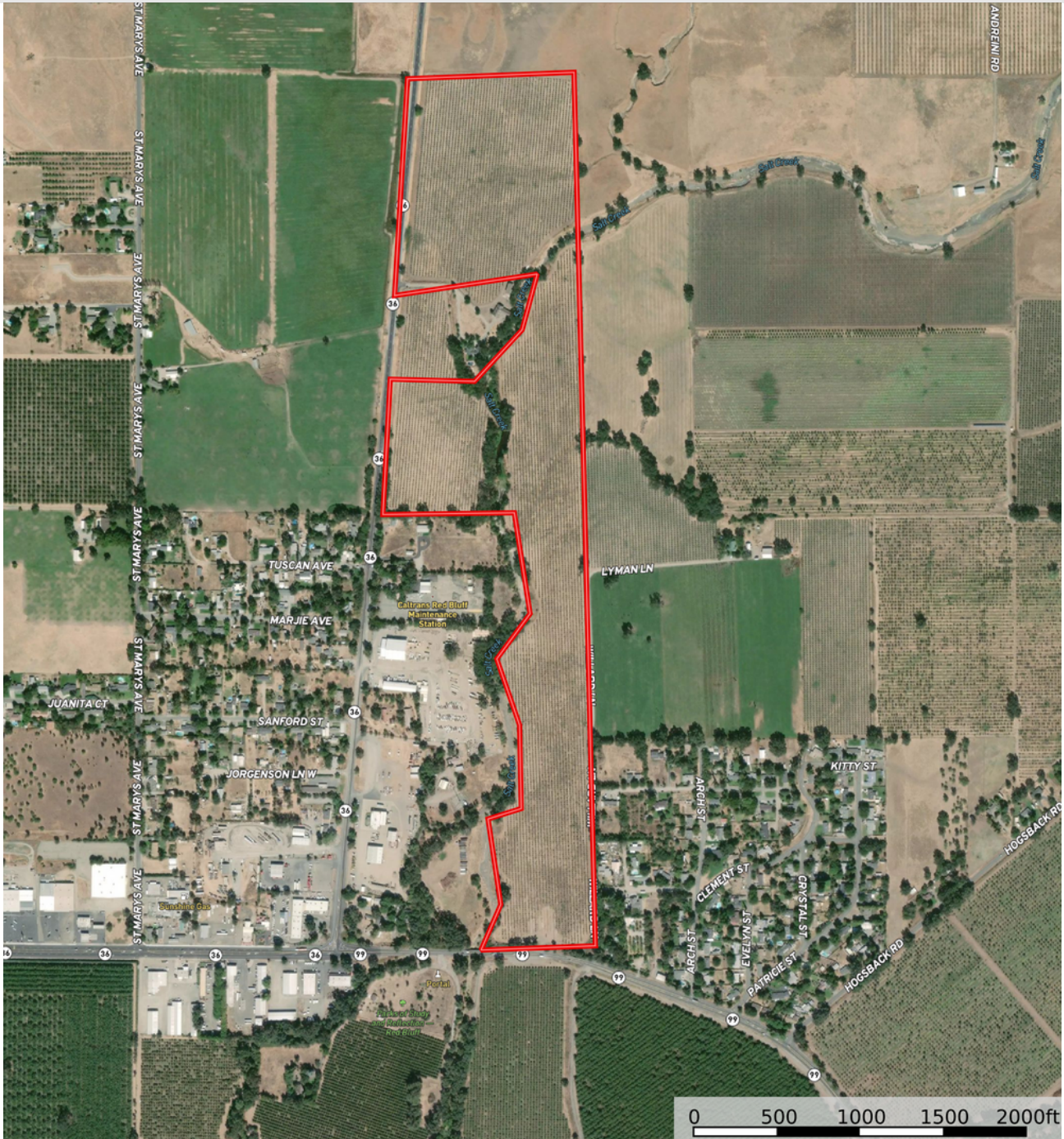
591 Colusa Ave., Yuba City, CA 95991 | 530.671.2770 | www.stromerrealty.com



Stromer Realty Company of California

Buzz Gill | DRE # 01238633

530.682.8485 (m) | buzz@stromerrealty.com



The information contained in this brochure is from reliable sources and is believed to be correct, but is NOT guaranteed.

591 Colusa Ave., Yuba City, CA 95991 | 530.671.2770 | www.stromerrealty.com



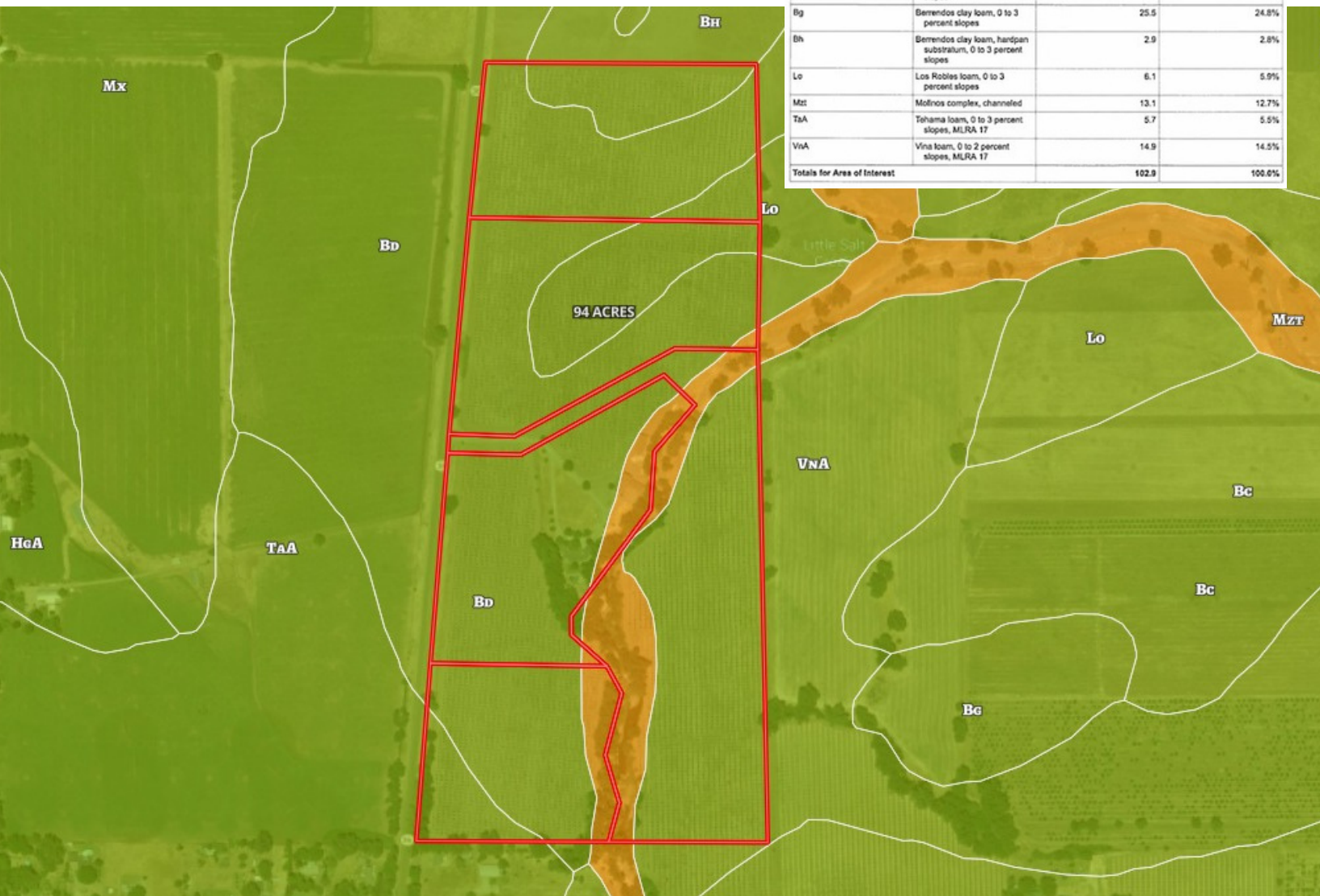
Stromer Realty Company of California

Buzz Gill | DRE # 01238633

530.682.8485 (m) | buzz@stromerrealty.com

Map Unit Legend

Map Unit Symbol	Map Unit Name	Acres in ADI	Percent of ADI
Bd	Berrendos clay, hard pan substratum, 0 to 3 percent slopes	34.7	33.7%
Bg	Berrendos clay loam, 0 to 3 percent slopes	25.5	24.8%
Bh	Berrendos clay loam, hardpan substratum, 0 to 3 percent slopes	2.9	2.8%
Lo	Los Robles loam, 0 to 3 percent slopes	6.1	5.9%
Mzt	Molinos complex, channelled	13.1	12.7%
TaA	Tohama loam, 0 to 3 percent slopes, MLRA 17	5.7	5.5%
VnA	Vina loam, 0 to 2 percent slopes, MLRA 17	14.9	14.5%
Totals for Area of Interest		102.9	100.0%



The information contained in this brochure is from reliable sources and is believed to be correct, but is NOT guaranteed.

591 Colusa Ave., Yuba City, CA 95991 | 530.671.2770 | www.stromerrealty.com



The information contained in this brochure is from reliable sources and is believed to be correct, but is NOT guaranteed.

591 Colusa Ave., Yuba City, CA 95991 | 530.671.2770 | www.stromerrealty.com



The information contained in this brochure is from reliable sources and is believed to be correct, but is NOT guaranteed.

591 Colusa Ave., Yuba City, CA 95991 | 530.671.2770 | www.stromerrealty.com