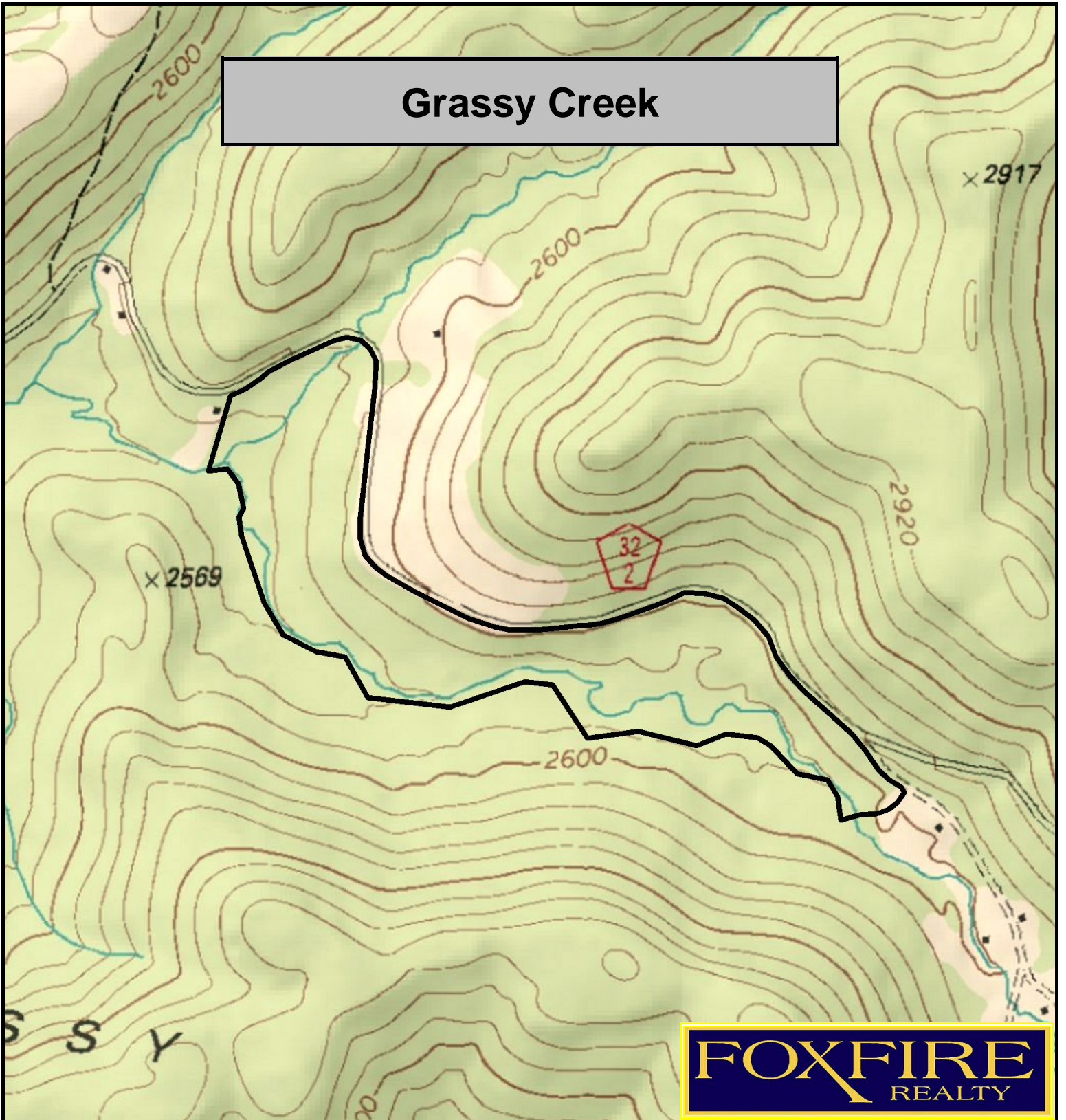


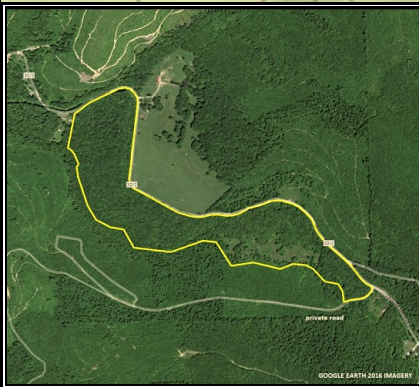
Grassy Creek



FOXFIRE
REALTY

Grassy Creek, Nicholas County, WV
TOPOGRAPHIC MAP
Elevation Range: 2489' - 2648' +/-
Google Coordinates: LAT 38.174241 (N), LON -80.634718 (W)
This map is for general location purposes only. Consult a licensed land surveyor for actual boundary location and acreage.

RICHARD GRIST, Broker - Auctioneer - Forester
304.646.8837 Richard@Foxfirenation.com
WWW.FOXFIRENATION.COM



GOOGLE EARTH 2016 IMAGERY

FOR TOPO MAP SCALE 1:9600 1 INCH = 800 FT.

