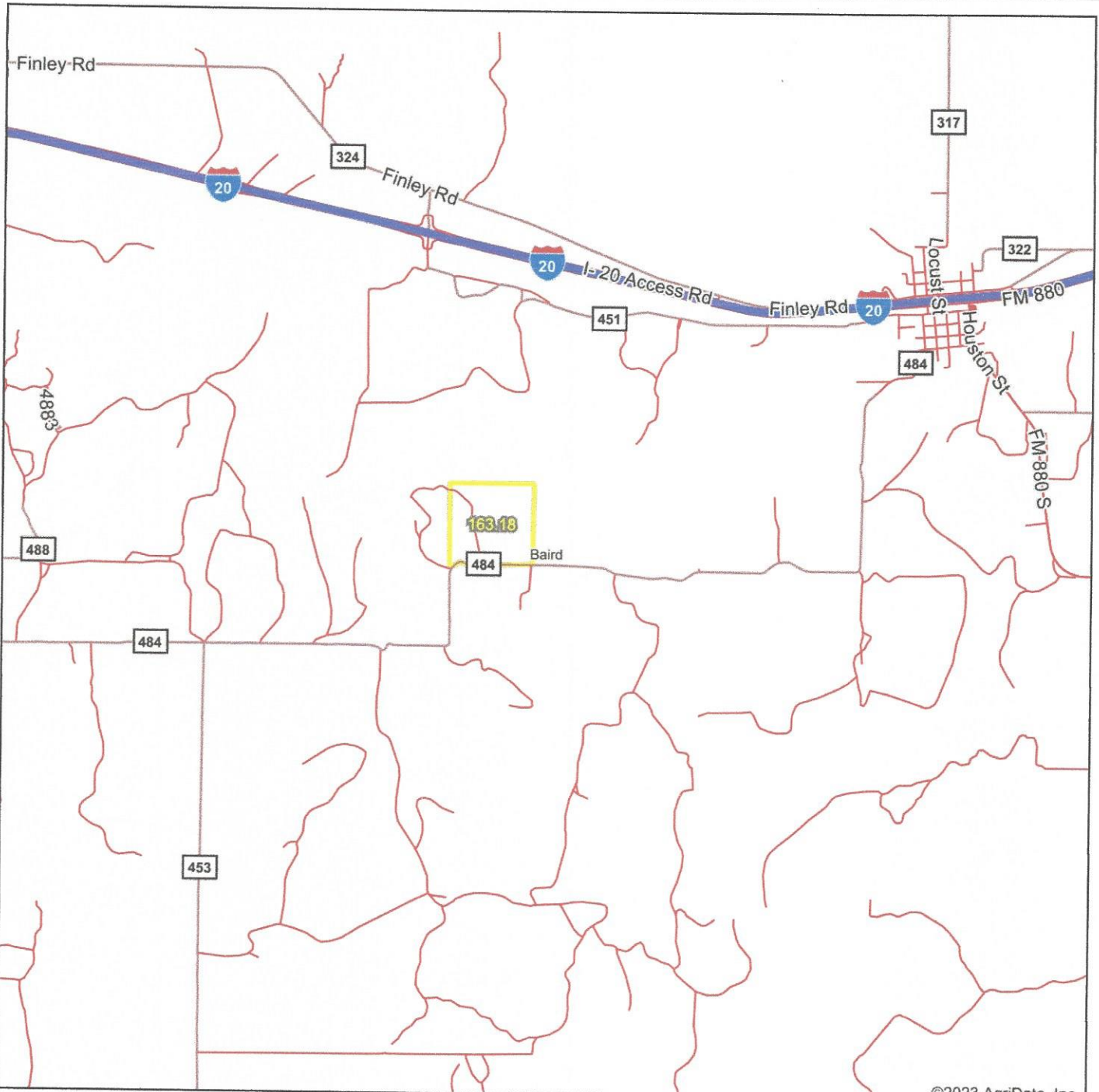
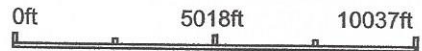


Overview Map



©2023 AgriData, Inc.

map center: 32° 20' 54.22, -99° 14' 10.98

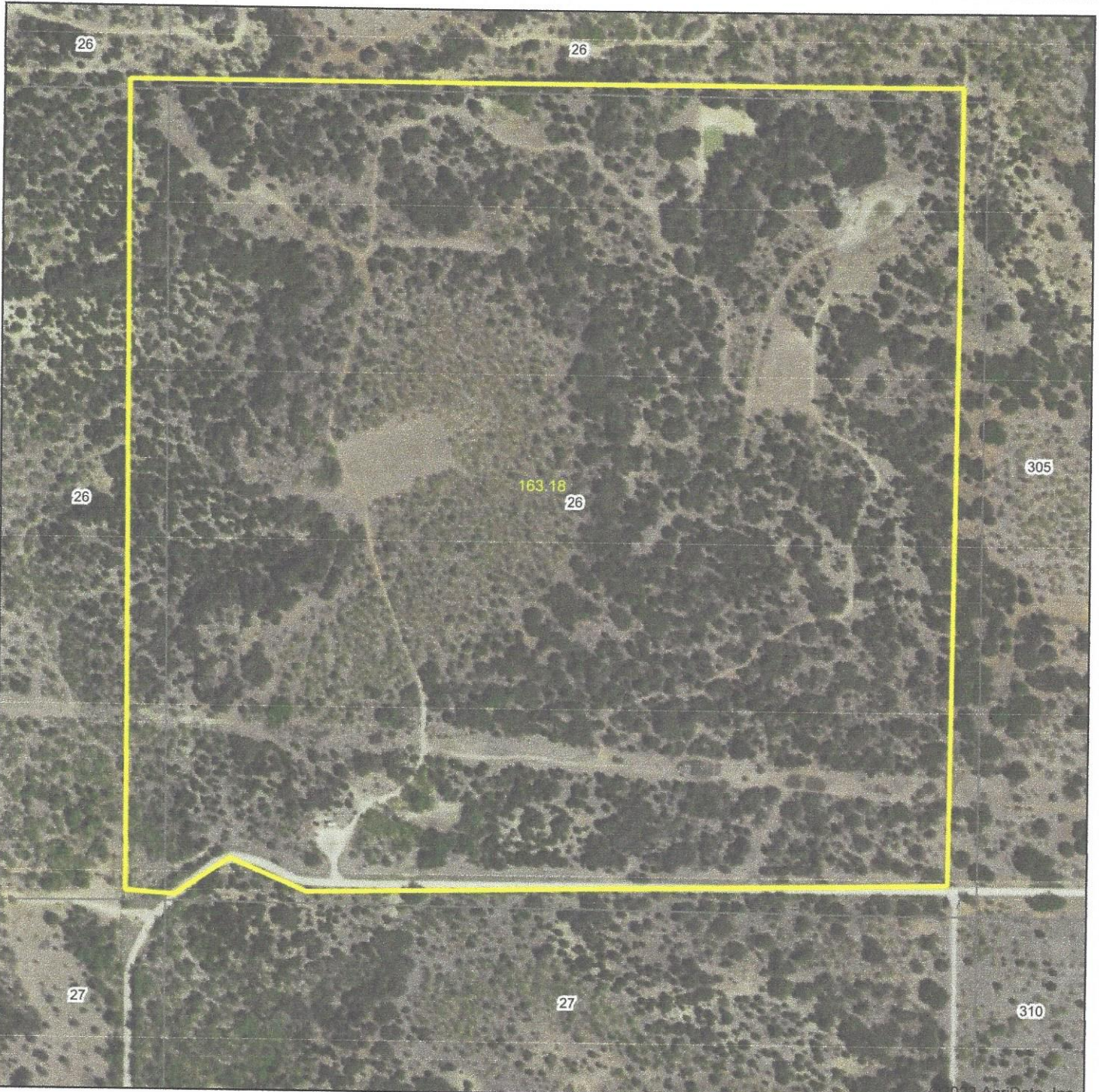


Maps Provided By:

 CUSTOMIZED ONLINE MAPPING
 © AgriData, Inc. 2023 www.AgriDataInc.com

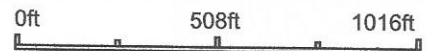


Aerial Map



© 2023 AgriData, Inc.

Map Center: 32° 21' 1.55, -99° 14' 31.71

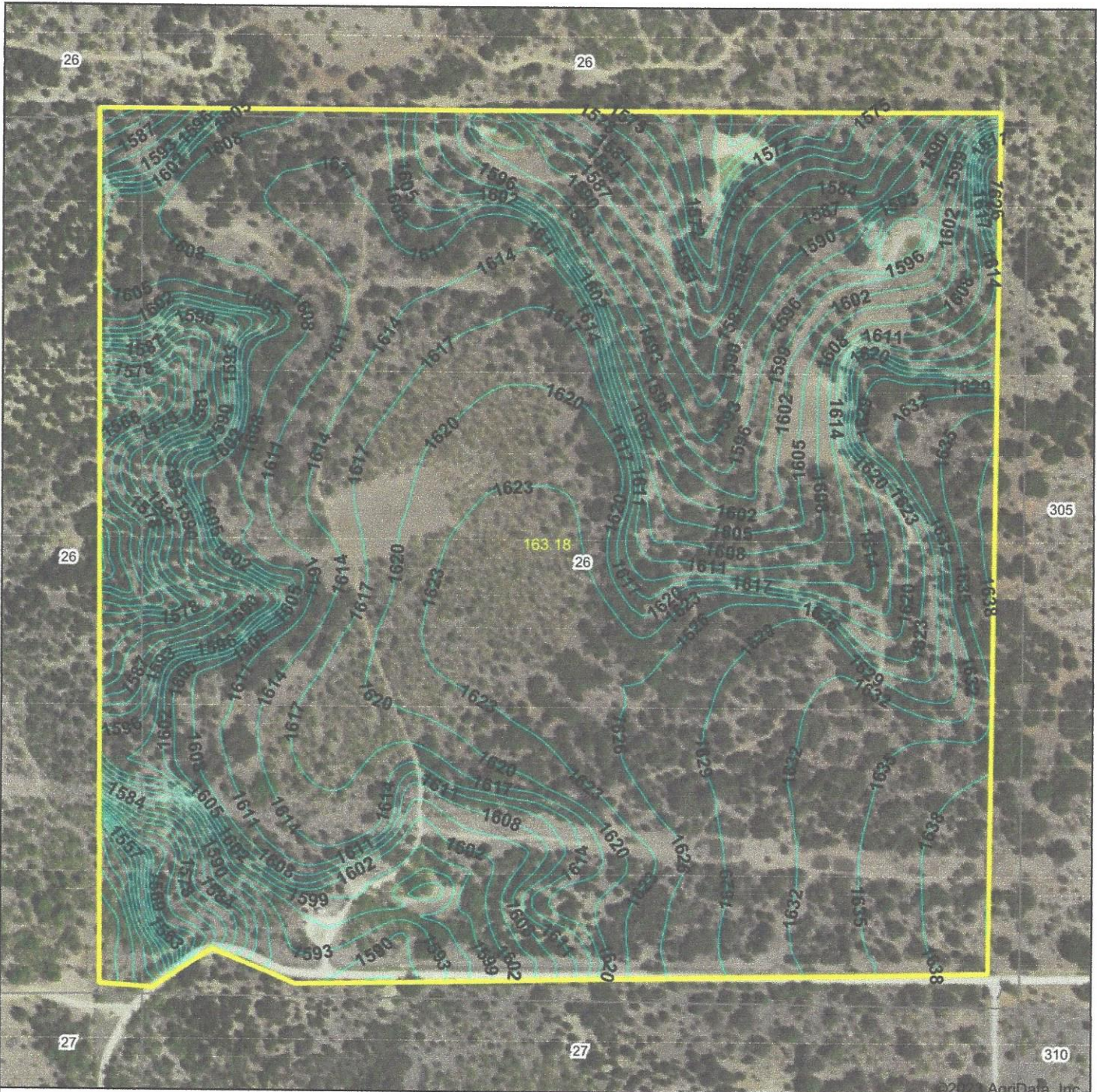


Maps Provided By:
surety
CUSTOMIZED ONLINE MAPPING
© AgriData, Inc. 2023 www.AgriDataInc.com

**Callahan County
Texas**

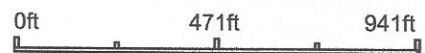


Topography Contours



© 2023 AgriData, Inc.

Source: USGS 10 meter dem
 Interval(ft): 3.0
 Min: 1,537.8
 Max: 1,640.8
 Range: 103.0
 Average: 1,609.7
 Standard Deviation: 18.08 ft



Callahan County
Texas

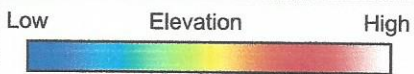
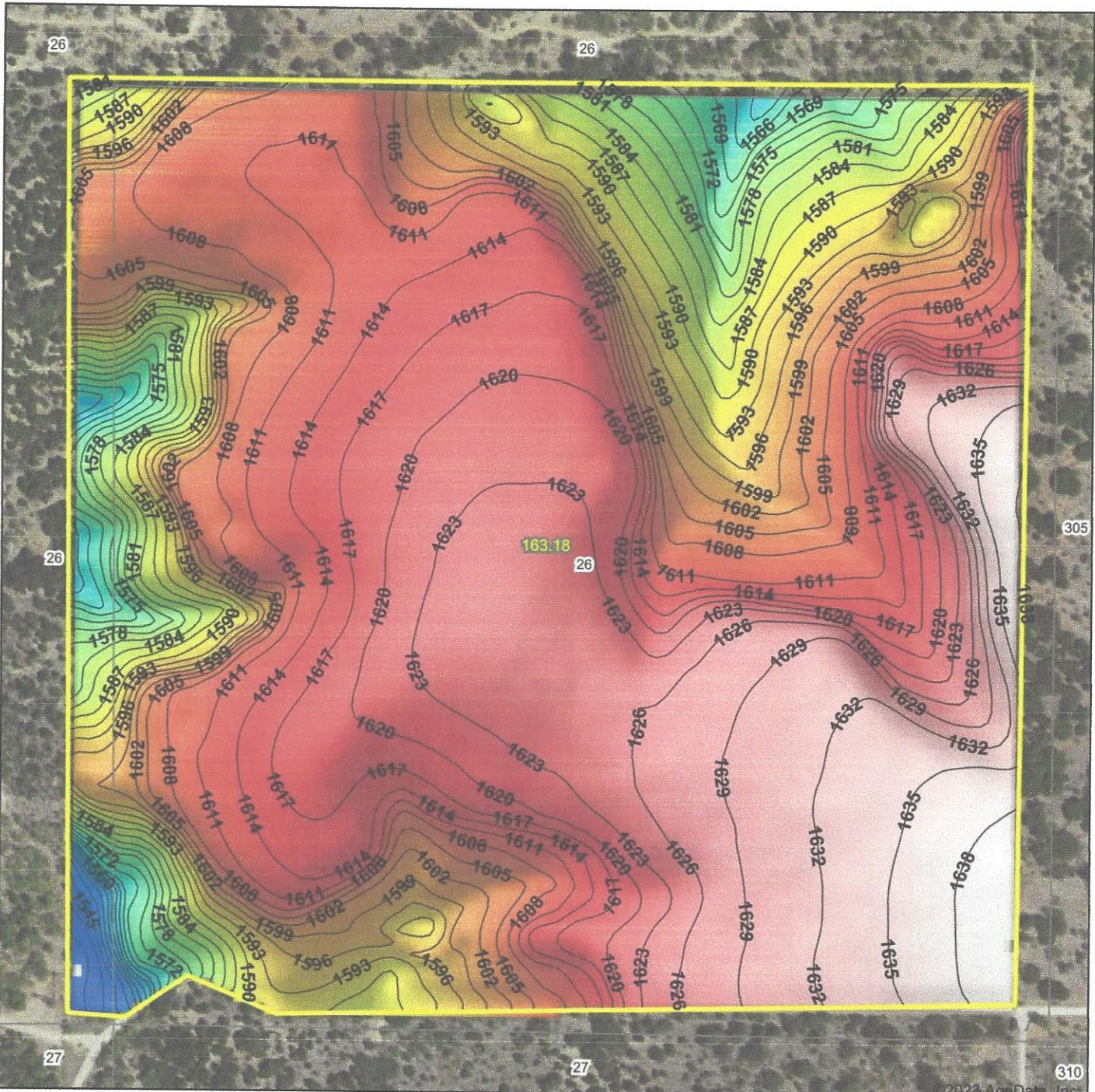
3/2/2023

Map Center: 32° 21' 1.55, -99° 14' 31.71

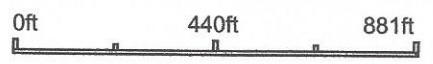
Maps Provided By:

 CUSTOMIZED ONLINE MAPPING
 © AgriData, Inc. 2023 www.AgriDataInc.com

Topography Hillshade



Source: USGS 10 meter dem
 Interval(ft): 3
 Min: 1,537.8
 Max: 1,640.8
 Range: 103.0
 Average: 1,609.7
 Standard Deviation: 18.08 ft



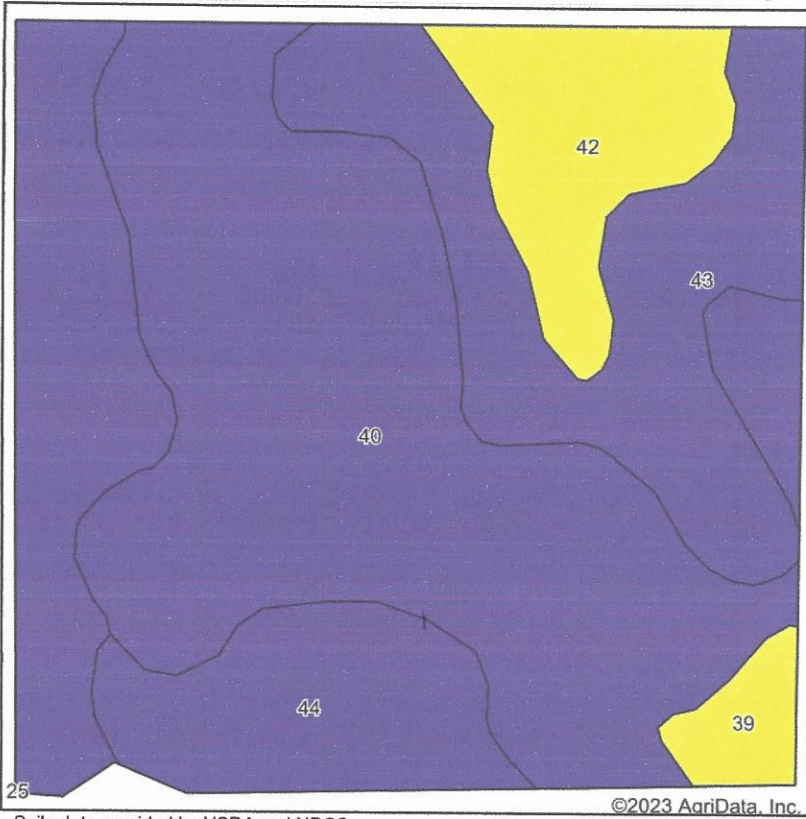
**Callahan County
 Texas**

map center: 32° 21' 1.55, -99° 14' 31.71

Maps Provided By:

 CUSTOMIZED ONLINE MAPPING
 © AgriData, Inc. 2023 www.AgriDataInc.com

Soils Map



State: **Texas**
 County: **Callahan**
 Location: **32° 21' 1.55, -99° 14' 31.71**
 Township: **Baird**
 Acres: **163.18**
 Date: **3/2/2023**



Soils data provided by USDA and NRCS.

©2023 AgriData, Inc.

Area Symbol: TX059, Soil Area Version: 19

Code	Soil Description	Acres	Percent of field	Non-Irr Class Legend	Non-Irr Class *c	Irr Class *c	Cotton lint Lbs	Grain sorghum Bu	Improved bermudagrass AUM	Oats Bu	Wheat Bu	*n NCCPI Soybeans
40	Speck-Throck association, gently undulating	74.61	45.7%		VIs				3.5			18
43	Throck-Owens-Lueders association, hilly	52.33	32.1%		VIIIs							16
44	Throck-Speck association, undulating	17.06	10.5%		VIs							21
42	Throck-Callahan-Owens association, undulating	15.30	9.4%		IVe		150	25		35	15	25
39	Speck clay loam, 1 to 3 percent slopes	3.88	2.4%		IVs				3.5	30	15	18
Weighted Average					6.09	*-	14.1	2.3	1.7	4	1.8	*n 18.3

*n: The aggregation method is "Weighted Average using all components"

*c: Using Capabilities Class Dominant Condition Aggregation Method

*- Irr Class weighted average cannot be calculated on the current soils data due to missing data.

Soils data provided by USDA and NRCS.