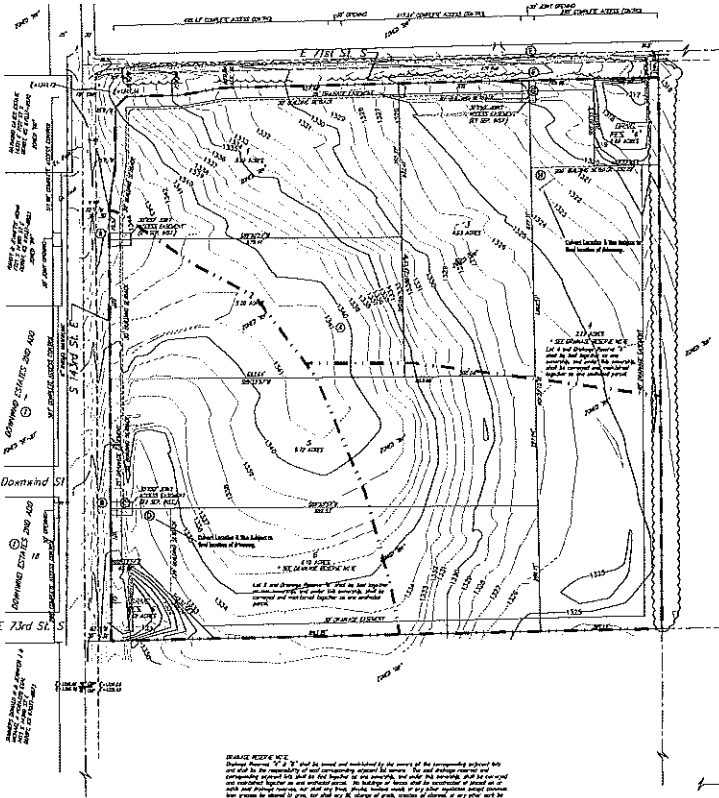


# DRAINAGE PLAN GLASER 2ND ADDITION SEDGWICK COUNTY, KANSAS



**MANHOLE**

MANHOLE NO.	INVERT ELEVATION	OUTLET ELEVATION	PIPE SIZE	LENGTH
1	1215.00	1215.00	18"	10'
2	1215.00	1215.00	18"	10'
3	1215.00	1215.00	18"	10'
4	1215.00	1215.00	18"	10'
5	1215.00	1215.00	18"	10'

**MANHOLE**

MANHOLE NO.	INVERT ELEVATION	OUTLET ELEVATION	PIPE SIZE	LENGTH
6	1215.00	1215.00	18"	10'
7	1215.00	1215.00	18"	10'
8	1215.00	1215.00	18"	10'
9	1215.00	1215.00	18"	10'
10	1215.00	1215.00	18"	10'

**MANHOLE**

MANHOLE NO.	INVERT ELEVATION	OUTLET ELEVATION	PIPE SIZE	LENGTH
11	1215.00	1215.00	18"	10'
12	1215.00	1215.00	18"	10'
13	1215.00	1215.00	18"	10'
14	1215.00	1215.00	18"	10'
15	1215.00	1215.00	18"	10'

**MANHOLE**

MANHOLE NO.	INVERT ELEVATION	OUTLET ELEVATION	PIPE SIZE	LENGTH
16	1215.00	1215.00	18"	10'
17	1215.00	1215.00	18"	10'
18	1215.00	1215.00	18"	10'
19	1215.00	1215.00	18"	10'
20	1215.00	1215.00	18"	10'

**MANHOLE**

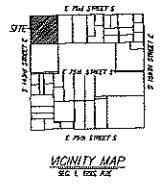
MANHOLE NO.	INVERT ELEVATION	OUTLET ELEVATION	PIPE SIZE	LENGTH
21	1215.00	1215.00	18"	10'
22	1215.00	1215.00	18"	10'
23	1215.00	1215.00	18"	10'
24	1215.00	1215.00	18"	10'
25	1215.00	1215.00	18"	10'

**MANHOLE**

MANHOLE NO.	INVERT ELEVATION	OUTLET ELEVATION	PIPE SIZE	LENGTH
26	1215.00	1215.00	18"	10'
27	1215.00	1215.00	18"	10'
28	1215.00	1215.00	18"	10'
29	1215.00	1215.00	18"	10'
30	1215.00	1215.00	18"	10'

**NOTES:**

1. All elevations are in feet above sea level.
2. The drainage plan is based on a 10-year return period storm.
3. The drainage plan is based on a 1% slope.
4. The drainage plan is based on a 1% slope.
5. The drainage plan is based on a 1% slope.



**NOTES:**

1. The drainage plan is based on a 10-year return period storm.
2. The drainage plan is based on a 1% slope.
3. The drainage plan is based on a 1% slope.
4. The drainage plan is based on a 1% slope.
5. The drainage plan is based on a 1% slope.



**DRAINAGE PLAN  
GLASER 2ND ADDITION**

Prepared by: **Rayburn Company, P.A.**  
1000 W. 12th St., Topeka, Kansas 66604  
Phone: (913) 466-1234

**DRAINAGE PLAN**

This plan is based on the survey of the property and the drainage plan is based on a 10-year return period storm. The drainage plan is based on a 1% slope. The drainage plan is based on a 1% slope. The drainage plan is based on a 1% slope.