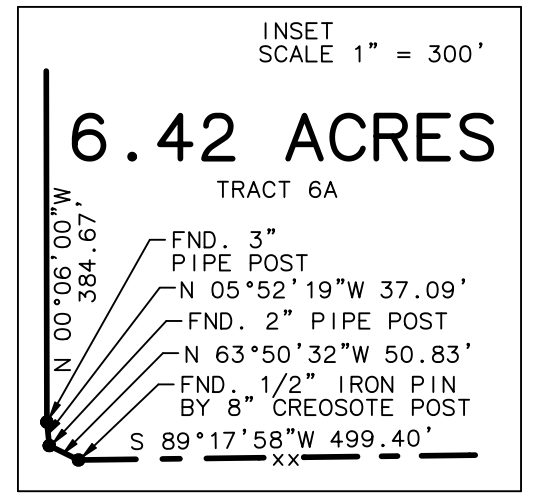


MEDINA COUNTY, TEXAS

GREAT OAKS SUBDIVISION PHASE III
VOL. 7, PGS. 139-142, PLAT RECORDS

Sur. 119 | Sur. 1218A



abst. 1495

Sur. 22

ELECTRIC EASEMENT #1
0.79 ACRE

COUNTY ROAD 770

GATE

JOHN A. GRIFFIN

N 66°50'17\"/>

N 00°06'00\"/>

abst. 1383

COUNTY ROAD 7711

FND. 5/8\"/>

1.00 Acre
Joe Giorda, et ux
to
Stephen J. Tower, et ux
March 28, 2016
Doc #2016002205, O.P.R.
described in
Doc #2016004210, O.P.R.

abst. 1369 | abst. 378

A plat of 13 tracts of land, three road easements, and two electric easements situated about 25.2 miles S 51° E of Hondo in Medina County, Texas.

GRAVIEL RUIZ

LOT 3

LOT 2

LOT 6

11.01 ACRES
TRACT 1

11.01 ACRES
TRACT 12

11.01 ACRES
TRACT 2

ROAD EASEMENT #1
1.77 ACRE

11.01 ACRES
TRACT 11

10.33 ACRES
TRACT 3

ROAD EASEMENT #2
1.80 ACRE

11.69 ACRES
TRACT 10

1.00 ACRE
DEED

12.08 ACRES
- 1.00 S/E
11.08 ACRES
TRACT 4

10.71 ACRES
TRACT 9
ABI CLARK

ROAD EASEMENT #3
1.77 ACRE

10.24 ACRES
TRACT 5

11.01 ACRES
TRACT 8

ROAD EASEMENT #4
1.08 ACRE

6.42 ACRES
TRACT 6A

6.41 ACRES
TRACT 6B

139.24 Acres
Lilly Childrens Partnership LTD
to
Nocknut Woods, LLC
January 6, 2023
Doc #2023000216, O.P.R.
surveyed December 19, 2022

16.30 ACRES
TRACT 7

abst. 455

Sur. 4

41.517 Acres
Oscar Mullins
to
Kenneth Mullins
December 27, 1989
Vol. 117, Pg. 637, O.P.R.

remainder 13.658 Acres
Anthony Lauren Guthrie
to
Jack Moore, et ux
August 15, 2006
Vol. 637, Pg. 367, O.P.R.

JOHN EATON

2.000 Acres
Jack Moore, et ux
to
Wesley Wade Mullins
March 14, 2014
Doc #2014030509, O.P.R.

5.409 Acres
Kenneth Mullins, et ux
to
Kenneth Wade Mullins, et ux
July 9, 1993
Vol. 199, Pg. 731, O.P.R.

41.517 Acres
Oscar Mullins
to
Kenneth Mullins
December 27, 1989
Vol. 117, Pg. 637, O.P.R.

FRIEDRICH PETERS

abst. 768

41.517 Acres
Tract 1
Bertha M. Fuller, et al
to
Bertha M. Fuller
September 25, 1989
Vol. 112, Pg. 289, O.P.R.

ELECTRIC EASEMENT #2
0.65 ACRE

HENRY GRIFFIN

SCALE 1" = 300'

BEARINGS SHOWN HEREON
ARE FROM GPS OBSERVATIONS
TEXAS COORDINATE SYSTEM
NAD (83).

41.517 Acres
Tract 1
Bertha M. Fuller, et al
to
Bertha M. Fuller
September 25, 1989
Vol. 112, Pg. 289, O.P.R.

- LEGEND:
- E — OVERHEAD ELECTRIC LINE
 - xx — FENCE LINE
 - o — SET 5/8" IRON PIN
 - — ORIGINAL SURVEY LINE
 - POB POINT OF BEGINNING
 - EM ELECTRIC METER
 - S/E SAVE & EXCEPT
 - O.P.R. OFFICIAL PUBLIC RECORDS
MEDINA COUNTY, TEXAS

PREPARED FOR:
NOCKNUT WOODS LLC
PO BOX 1260
CANYON LAKE, TEXAS 78133

PREPARED BY:
HOWARD SURVEYING
TBPELS FIRM NO. 10125700
402 STATE HWY 173 SOUTH
HONDO, TEXAS 78861
830-426-4776

SURVEYED ON THE GROUND: JANUARY 20 & 25, 2023
DATE PREPARED: MARCH 23, 2023

DEED
2 Acres
I. W. G. Startz
to
D. S. Griffin
May 26, 1928
Vol. 88, Pg. 477, D.R.