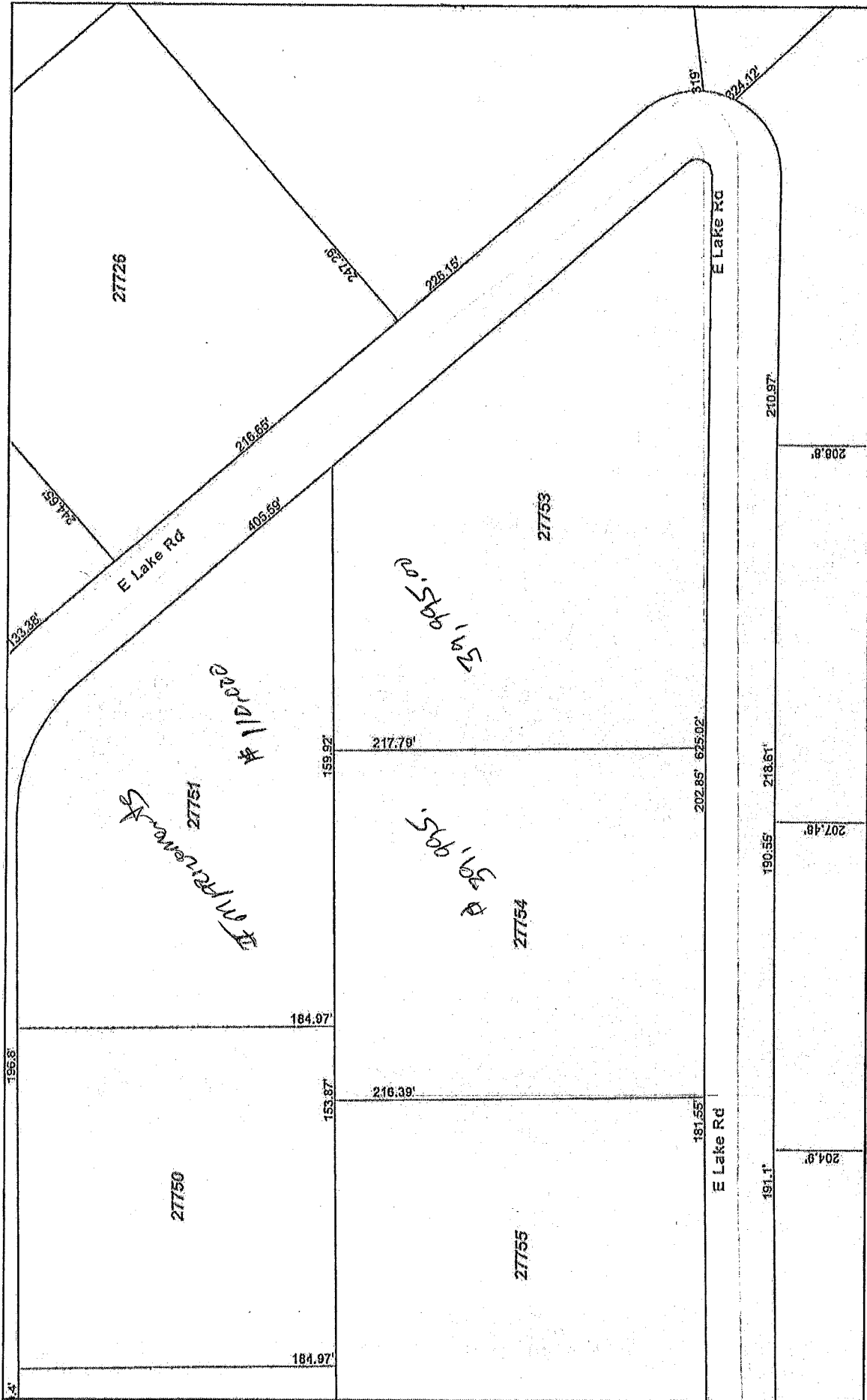
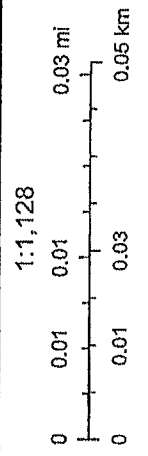


# Walker CAD Web Map



9/29/2020 12:00:10 PM

Parcels 
  Abstracts 
  Lot Lines



Sources: Esri, HERE, Garmin, FAO, NOAA, USGS, © OpenStreetMap

Disclaimer: This product is for informational purposes only and has not been prepared for or be suitable for legal, engineering, or surveying purposes. It does not represent an on-the-ground survey and represents only the approximate relative location of boundaries. Walker County Appraisal District, BIS Consulting - www.bisconsulting.com