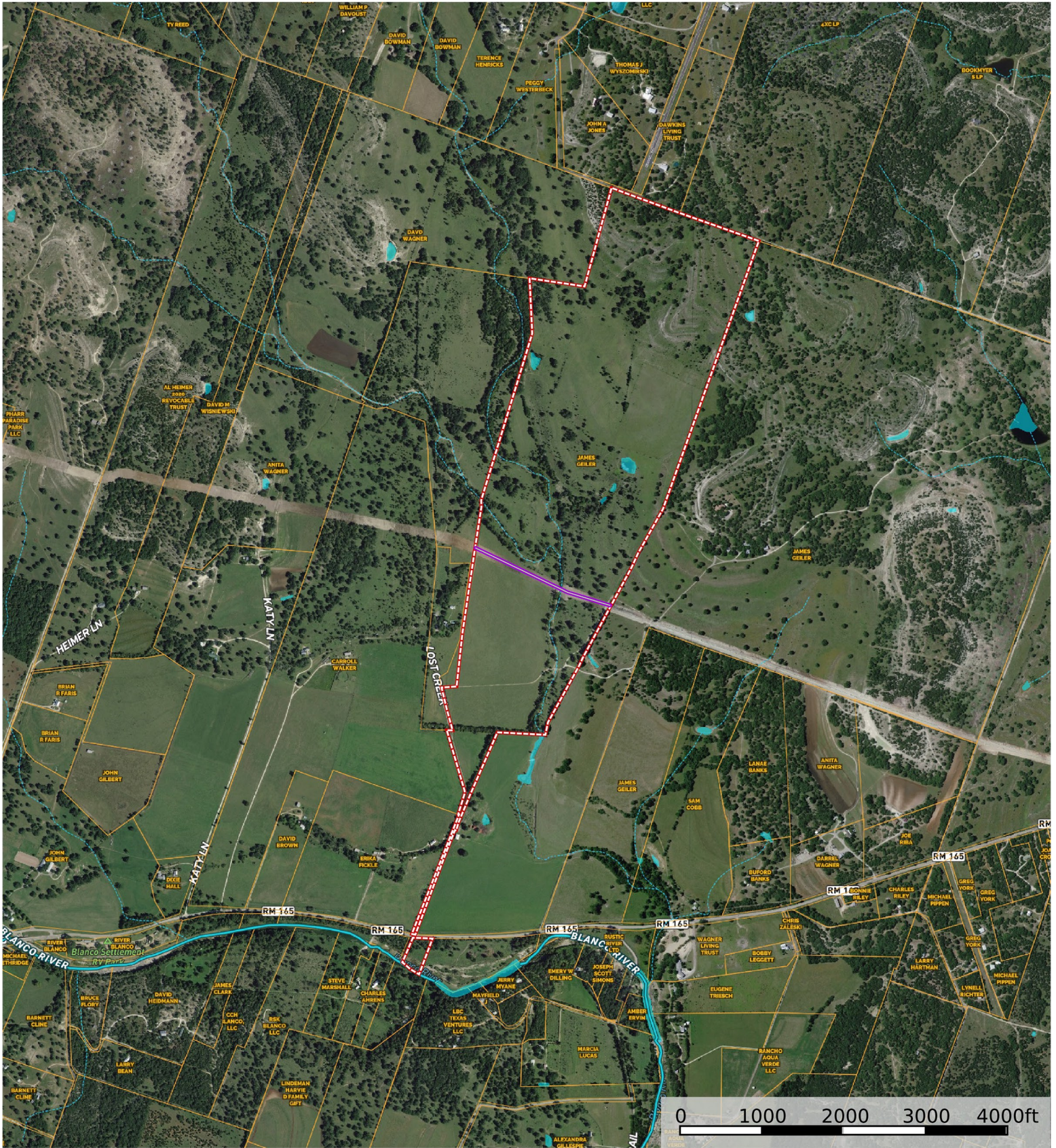


**Lost Creek 300 Ranch**  
Blanco County, Texas, 300.5 AC +/-



- Gas Pipeline
- Boundary
- - - Stream, Intermittent
- River/Creek
- Water Body

**Andi Eystad**  
P: 830-446-1532

[AndersRanchRealty.com/andi-eystad](http://AndersRanchRealty.com/andi-eystad)

**Brady P. Anders**  
P: 512-791-9961

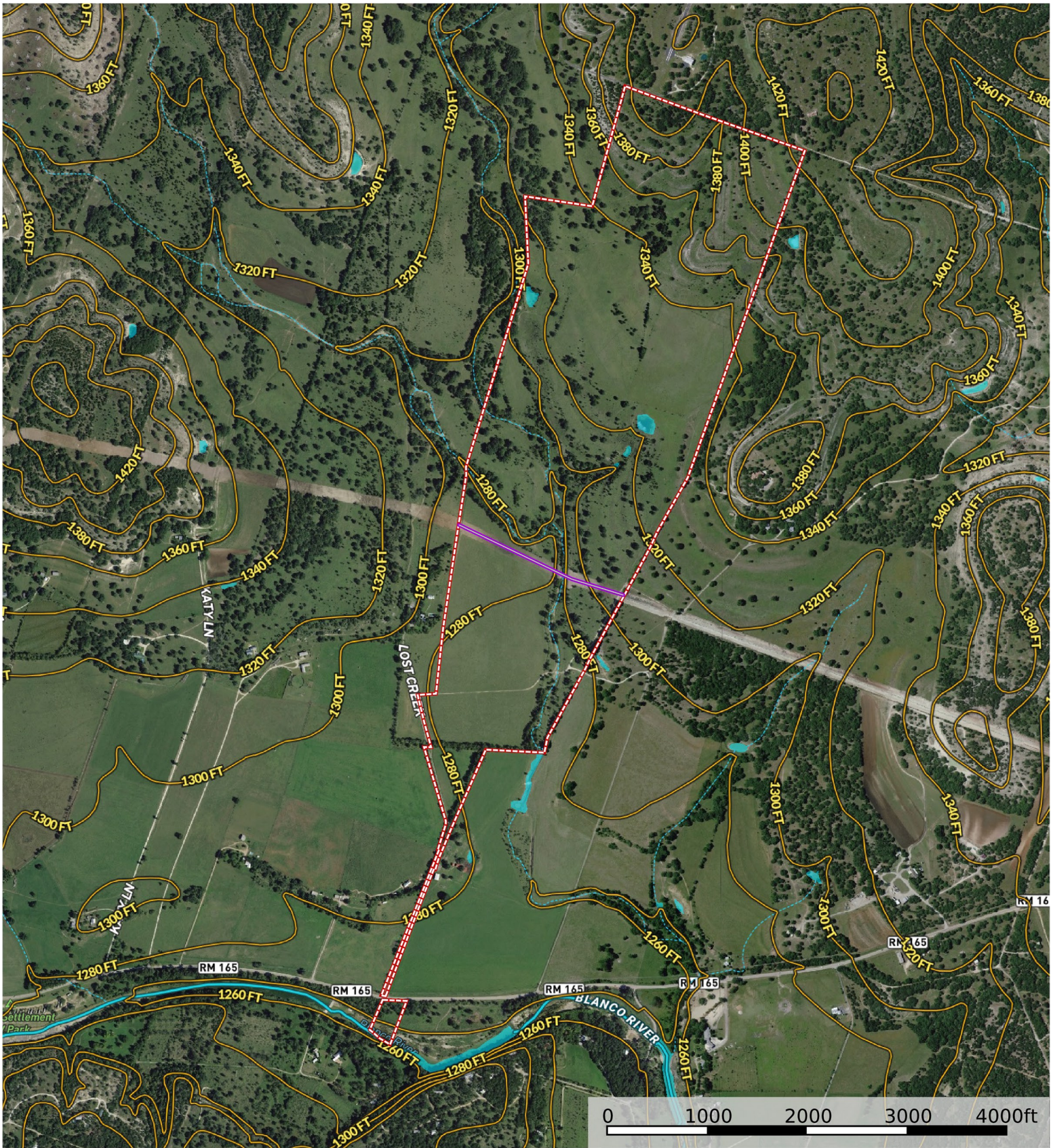
[AndersRanchRealty.com/brady-anders](http://AndersRanchRealty.com/brady-anders)

302 E. Main Street, Johnson



The information contained herein was obtained from sources deemed to be reliable. No warranties or guarantees as to the accuracy is claimed.

**Lost Creek 300 Ranch**  
 Blanco County, Texas, 300.5 AC +/-



**Andi Eystad**  
 P: 830-446-1532

[AndersRanchRealty.com/andi-eystad](http://AndersRanchRealty.com/andi-eystad)

**Brady P. Anders**  
 P: 512-791-9961

[AndersRanchRealty.com/brady-anders](http://AndersRanchRealty.com/brady-anders)

302 E. Main Street, Johnson



The information contained herein was obtained from sources deemed to be reliable. No warranties or guarantees as to the accuracy is claimed.

**Lost Creek 300 Ranch**  
Blanco County, Texas, 300.5 AC +/-



- Gas Pipeline
- Boundary
- Stream, Intermittent
- River/Creek
- Water Body

**Andi Eystad**  
P: 830-446-1532

[AndersRanchRealty.com/andi-eystad](http://AndersRanchRealty.com/andi-eystad)

**Brady P. Anders**  
P: 512-791-9961

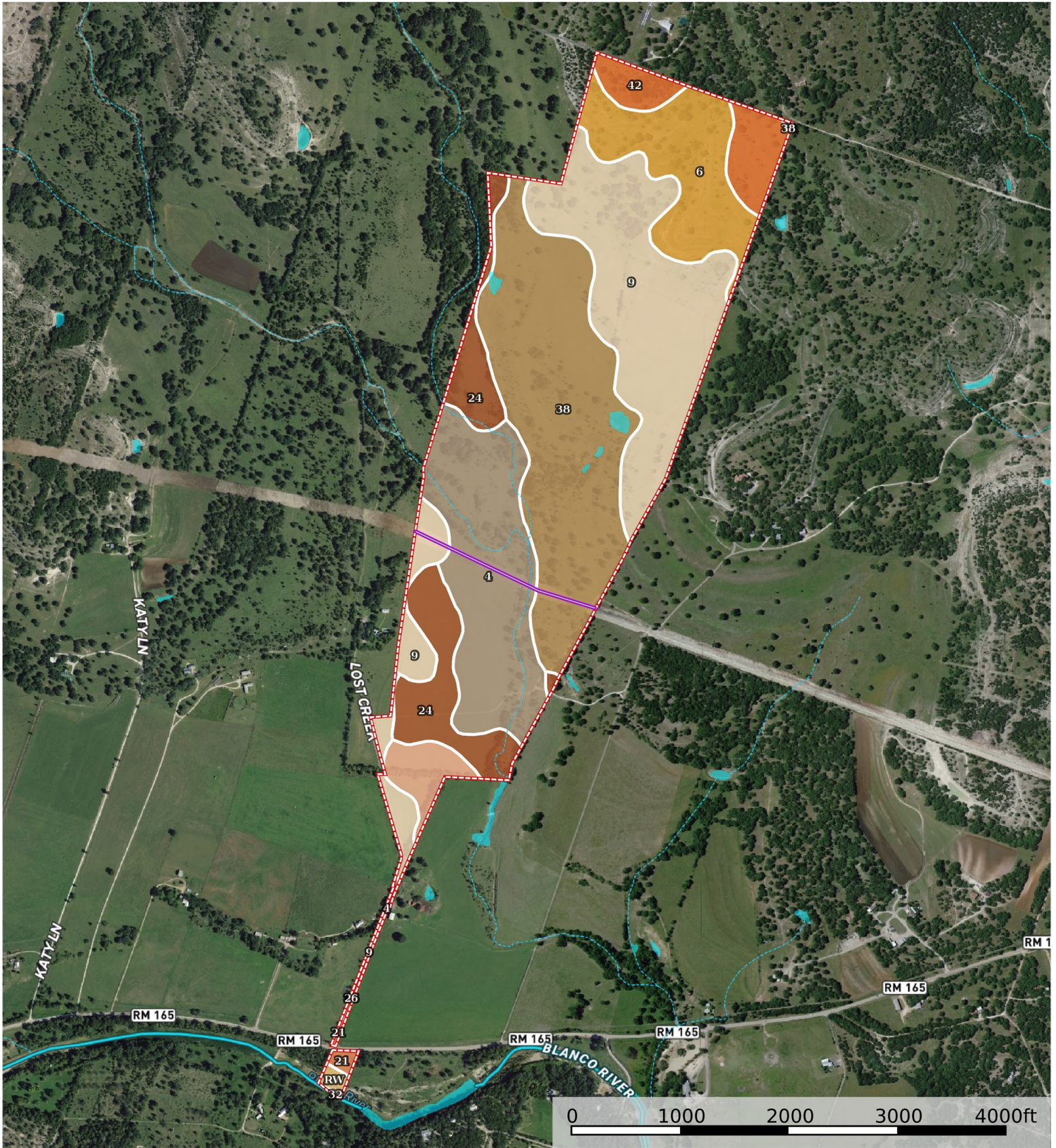
[AndersRanchRealty.com/brady-anders](http://AndersRanchRealty.com/brady-anders)

302 E. Main Street, Johnson



The information contained herein was obtained from sources deemed to be reliable. No warranties or guarantees as to the accuracy is claimed.

**Lost Creek 300 Ranch**  
 Blanco County, Texas, 300.5 AC +/-



- Gas Pipeline
- Boundary
- - - - Stream, Intermittent
- River/Creek
- Water Body

**Andi Eystad**  
 P: 830-446-1532

[AndersRanchRealty.com/andi-eystad](http://AndersRanchRealty.com/andi-eystad)

**Brady P. Anders**  
 P: 512-791-9961

[AndersRanchRealty.com/brady-anders](http://AndersRanchRealty.com/brady-anders)

302 E. Main Street, Johnson



The information contained herein was obtained from sources deemed to be reliable. No warranties or guarantees as to the accuracy is claimed.

|  All Polygons 304.14 ac

SOIL CODE	SOIL DESCRIPTION	ACRES	%	CPI	NCCPI	CAP
38	Purves clay, 1 to 8 percent slopes	83.87	27.58	0	22	6e
9	Doss silty clay, moist, 1 to 5 percent slopes	78.43	25.79	0	25	4e
4	Bolar clay loam, 1 to 3 percent slopes	53.18	17.49	0	32	3s
6	Brackett association, 1 to 8 percent slopes	33.26	10.94	0	23	4e
24	Krum clay, 1 to 3 percent slopes	29.96	9.85	0	48	3e
42	Tarpley-Eckrant complex, 1 to 8 percent slopes, stony	14.8	4.87	0	18	6e
26	Lewisville clay loam, 0 to 1 percent slopes	8.2	2.7	0	44	1
21	Karnes loam, 1 to 3 percent slopes	1.26	0.41	0	40	3e
RW	Riverwash, frequently flooded	1.08	0.36	0	-	8w
32	Oakalla silty clay loam, 0 to 2 percent slopes, occasionally flooded	0.1	0.03	0	58	3e
TOTALS		304.14(*)	100%	-	27.6	4.3

(\*) Total acres may differ in the second decimal compared to the sum of each acreage soil. This is due to a round error because we only show the acres of each soil with two decimal.

|  Boundary 301.95 ac

SOIL CODE	SOIL DESCRIPTION	ACRES	%	CPI	NCCPI	CAP
38	Purves clay, 1 to 8 percent slopes	83.87	27.78	0	22	6e
9	Doss silty clay, moist, 1 to 5 percent slopes	78.43	25.98	0	25	4e
4	Bolar clay loam, 1 to 3 percent slopes	53.18	17.61	0	32	3s
6	Brackett association, 1 to 8 percent slopes	33.26	11.02	0	23	4e
24	Krum clay, 1 to 3 percent slopes	29.96	9.92	0	48	3e
42	Tarpley-Eckrant complex, 1 to 8 percent slopes, stony	14.8	4.9	0	18	6e
26	Lewisville clay loam, 0 to 1 percent slopes	8.2	2.72	0	44	1
21	Karnes loam, 1 to 3 percent slopes	0.25	0.08	0	40	3e
TOTALS		301.95(*)	100%	-	27.65	4.3

(\*) Total acres may differ in the second decimal compared to the sum of each acreage soil. This is due to a round error because we only show the acres of each soil with two decimal.

|  Boundary 2.19 ac

SOIL CODE	SOIL DESCRIPTION	ACRES	%	CPI	NCCPI	CAP
RW	Riverwash, frequently flooded	1.08	49.54	0	-	8w
21	Karnes loam, 1 to 3 percent slopes	1.01	46.33	0	40	3e
32	Oakalla silty clay loam, 0 to 2 percent slopes, occasionally flooded	0.1	4.59	0	58	3e
TOTALS		2.19(*)	100%	-	21.19	5.47

(\*) Total acres may differ in the second decimal compared to the sum of each acreage soil. This is due to a round error because we only show the acres of each soil with two decimal.

show the acres of each soil with two decimal.

**Capability Legend**

Increased Limitations and Hazards  
Decreased Adaptability and Freedom of Choice Users

Land, Capability

	1	2	3	4	5	6	7	8
'Wild Life'	•	•	•	•	•	•	•	•
Forestry	•	•	•	•	•	•	•	
Limited	•	•	•	•	•	•	•	
Moderate	•	•	•	•	•	•		
Intense	•	•	•	•	•			
Limited	•	•	•	•				
Moderate	•	•	•					
Intense	•	•						
Very Intense	•							

**Grazing Cultivation**

(c) climatic limitations (e) susceptibility to erosion  
(s) soil limitations within the rooting zone (w) excess of water