

FOR SALE - 245 ACRES

SEC 159TH & HWY 169, OLATHE KS 66061



DICK STEPHENS

Direct: (913) 491-3366

Cell: (913) 485-8732

ds@reececommercial.com

SEC 159TH & HWY 169, OLATHE, KS 66061

PROPERTY INFORMATION

PRICE \$35,000 per acre

ACRES 245+/- Acres

ZONING Currently PEC-3 (planned light industrial)
Plan is to rezone to Single Family

TERRAIN Gently rolling open terrain

SCHOOLS See Attached School District Map

WATER 12" main along 159th St., extension needed along border of 167th St.

SEWER 15" main along west side of the property. See Sewer Map

GAS 4" main along 159th St. ends at NE corner of property

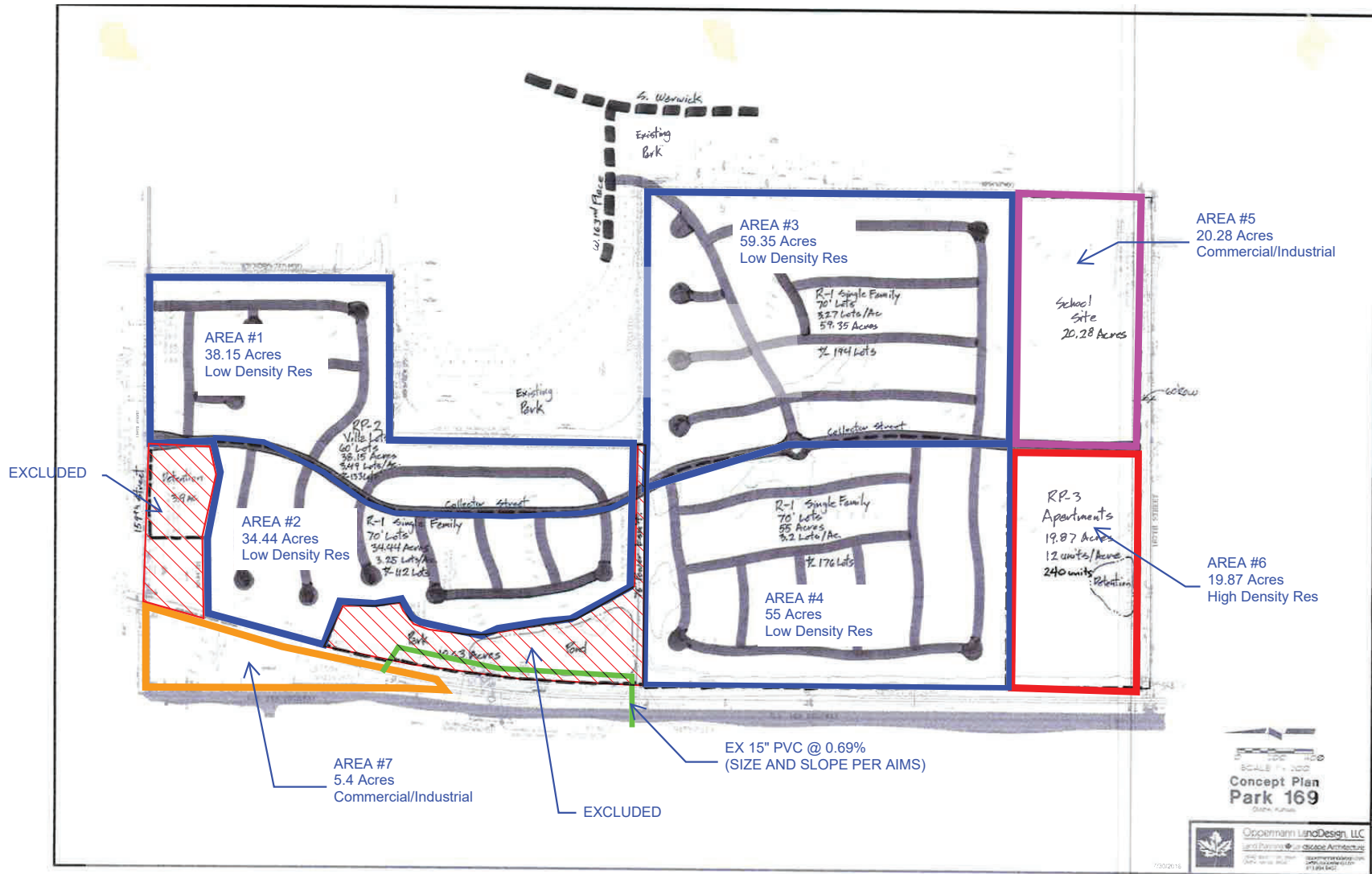
DEMOGRAPHICS

2020	1 MILE	3 MILES	5 MILES
POPULATION	2,973	50,237	123,090
MED HOUSEHOLD INCOME	\$94,771	\$87,105	\$88,847

The information in this package has been obtained from sources believed reliable. While we do not doubt its accuracy we have not verified it and make no guarantee, warranty or representation about it. It is your responsibility to independently confirm its accuracy and completeness. Any projections, opinions, assumptions, or estimates used are for example only and do not represent the current or future performance of the property. You and your advisors should conduct a careful, independent investigation of the property to determine to your satisfaction the suitability of the property for your needs. © 2019



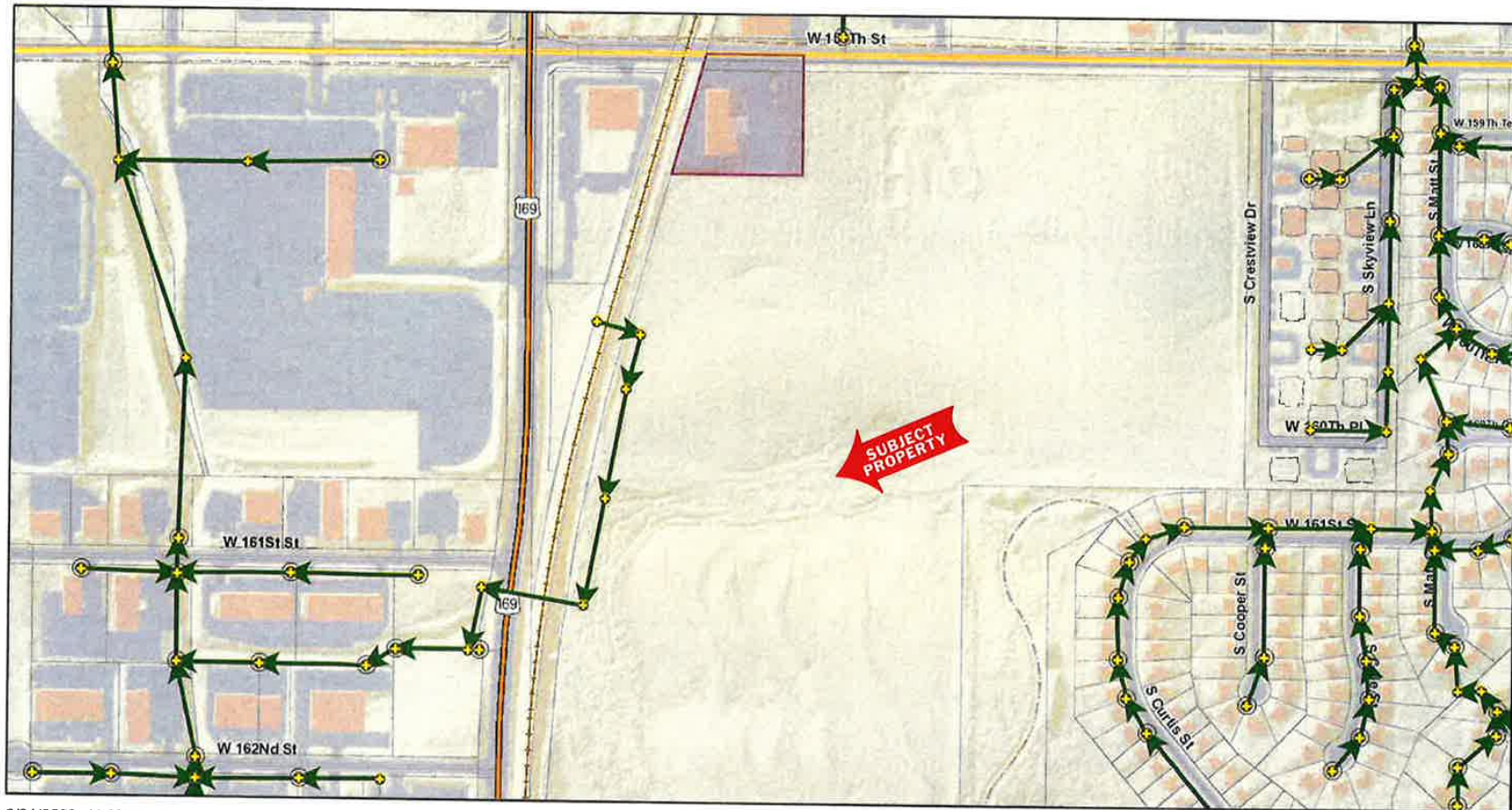
LAND PLAN



The information in this package has been obtained from sources believed reliable. While we do not doubt its accuracy we have not verified it and make no guarantee, warranty or representation about it. It is your responsibility to independently confirm its accuracy and completeness. Any projections, opinions, assumptions, or estimates used are for example only and do not represent the current or future performance of the property. You and your advisors should conduct a careful, independent investigation of the property to determine to your satisfaction the suitability of the property for your needs. © 2019

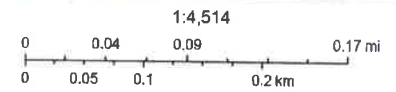
SEWER MAP

159th St & 169 Hwy Sanitary Sewers



9/21/2020, 11:05:16 AM

- | | | |
|-------------------------|------------------------|--------------------|
| Sanitary Manholes | Other Spatial Status | Removed/ Retired |
| Complete Spatial Status | Sanitary Gravity Mains | Parcels |
| | In Service | Olathe City Limits |
| | Abandoned | |



City of Olathe GIS

The information in this package has been obtained from sources believed reliable. While we do not doubt its accuracy we have not verified it and make no guarantee, warranty or representation about it. It is your responsibility to independently confirm its accuracy and completeness. Any projections, opinions, assumptions, or estimates used are for example only and do not represent the current or future performance of the property. You and your advisors should conduct a careful, independent investigation of the property to determine to your satisfaction the suitability of the property for your needs. © 2019



AERIAL



The information in this package has been obtained from sources believed reliable. While we do not doubt its accuracy we have not verified it and make no guarantee, warranty or representation about it. It is your responsibility to independently confirm its accuracy and completeness. Any projections, opinions, assumptions, or estimates used are for example only and do not represent the current or future performance of the property. You and your advisors should conduct a careful, independent investigation of the property to determine to your satisfaction the suitability of the property for your needs. © 2019



