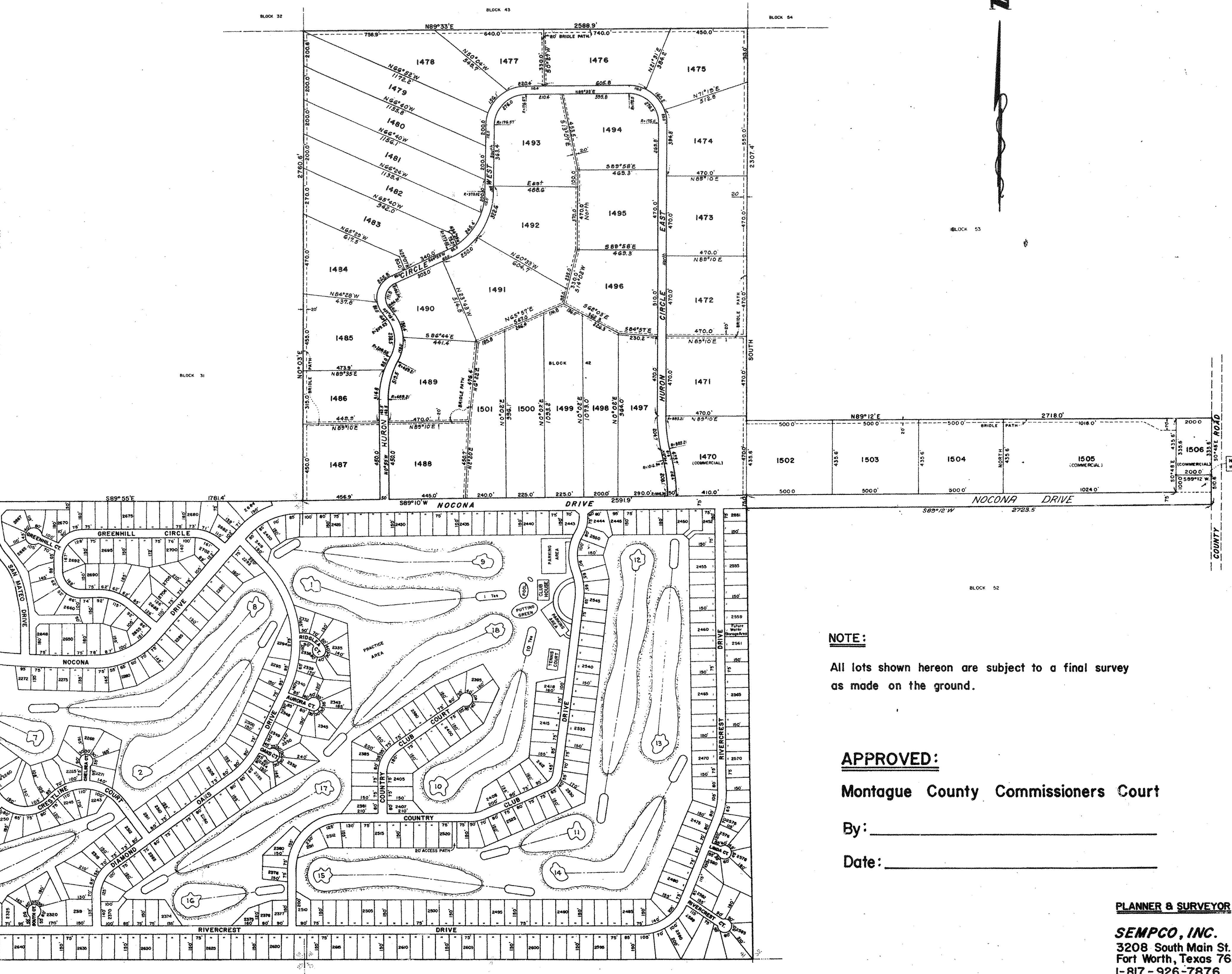
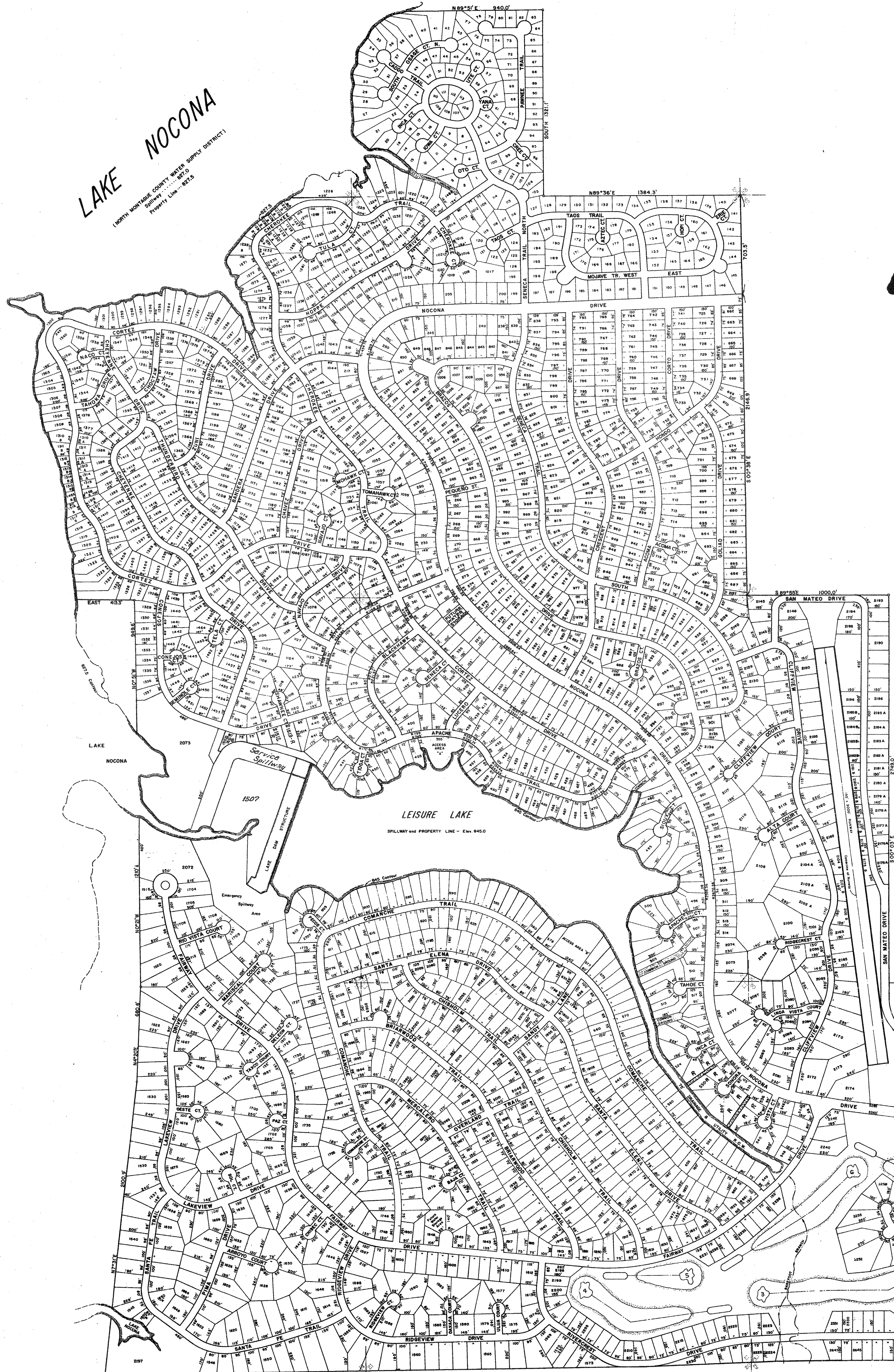
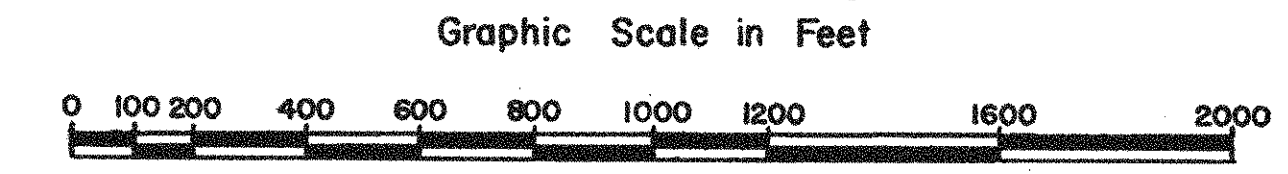


LAKE NOCONA
 NORTH MONTAGUE COUNTY WATER SURVEY DISTRICT
 SURVEY LINE - 1972

Lots 1 through 2707, Inclusive

NOCONA HILLS

All of Blocks 22, 23, 30, 41, and 42; and
 Portions of Blocks 12, 13, 24, 31, 52 & 53
KAUFMAN COUNTY SCHOOL LANDS SURVEY
 Montague County, Texas



NOTE:
 All lots shown hereon are subject to a final survey
 as made on the ground.

APPROVED:
 Montague County Commissioners Court
 By: _____
 Date: _____

PLANNER & SURVEYOR
SEMPCO, INC.
 3208 South Main St.
 Fort Worth, Texas 76101
 1-817-926-7876
 (April 17 1976)