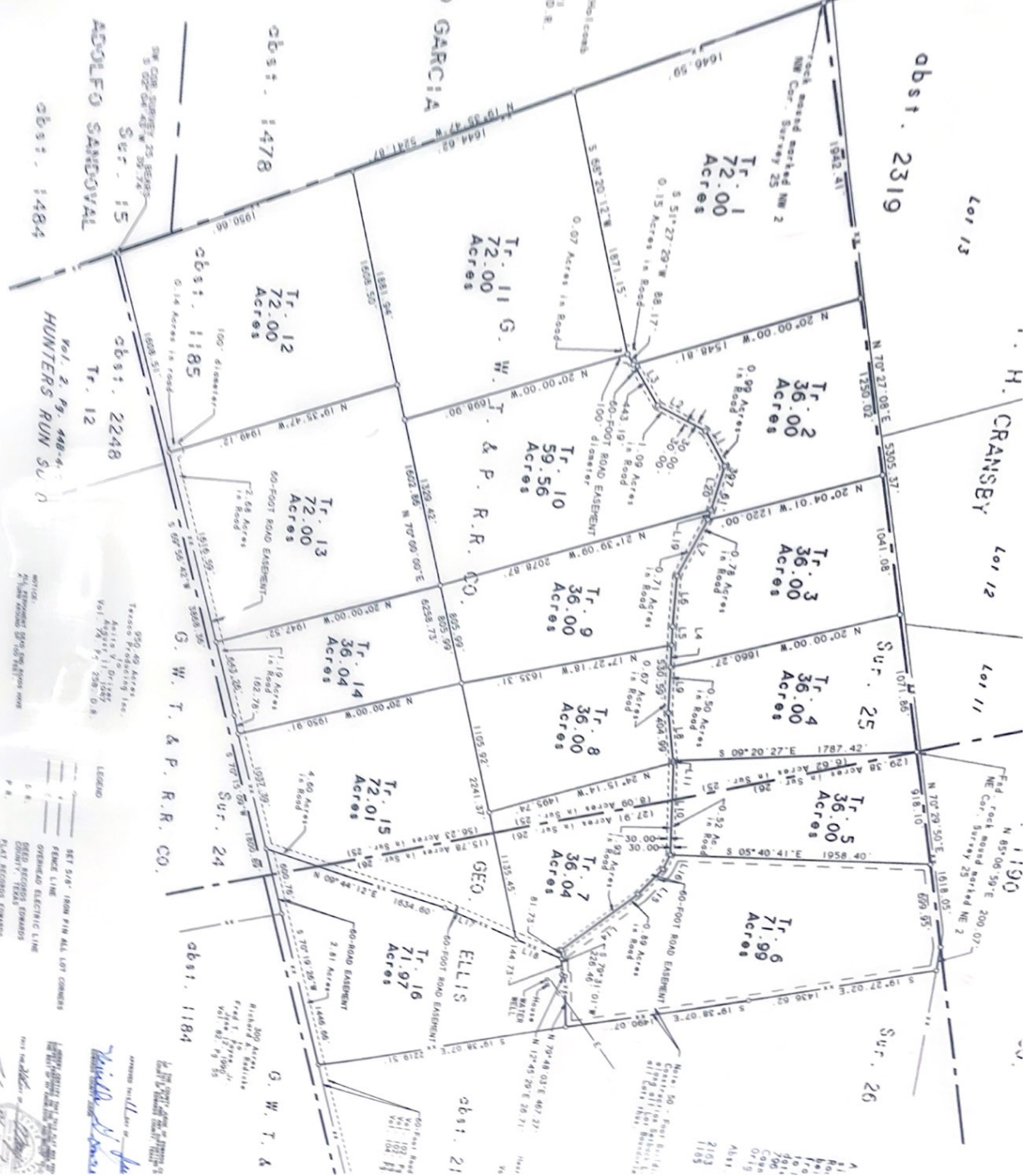




LINE	BEARINGS	DISTANCE
L. 1	S 22° 42' 30" W	2299.30
L. 2	S 22° 57' 30" W	2099.17
L. 3	S 21° 27' 28" W	3095.07
L. 4	S 82° 17' 47" W	1770.51
L. 5	S 84° 30' 15" W	2495.24
L. 6	S 71° 30' 28" W	2495.24
L. 7	S 82° 17' 47" W	1770.51
L. 8	S 82° 17' 47" W	1770.51
L. 9	S 82° 17' 47" W	1770.51
L. 10	S 82° 17' 47" W	1770.51
L. 11	S 82° 17' 47" W	1770.51
L. 12	S 82° 17' 47" W	1770.51
L. 13	S 82° 17' 47" W	1770.51
L. 14	S 82° 17' 47" W	1770.51
L. 15	S 82° 17' 47" W	1770.51
L. 16	S 82° 17' 47" W	1770.51
L. 17	S 82° 17' 47" W	1770.51
L. 18	S 82° 17' 47" W	1770.51
L. 19	S 82° 17' 47" W	1770.51
L. 20	S 82° 17' 47" W	1770.51

ALONZO GARCIA



LEGEND

- SET 5/4" 1/8" PIN ALL LOT CORNERS
- FENCE LINE
- ORSHEDD ELECTRIC LINE
- DEED RECORDS CORNERS
- DEED RECORDS CORNERS
- DEED RECORDS CORNERS
- DEED RECORDS CORNERS

Surveyed and Platted by
[Signature]
 Surveyor
 State of Texas



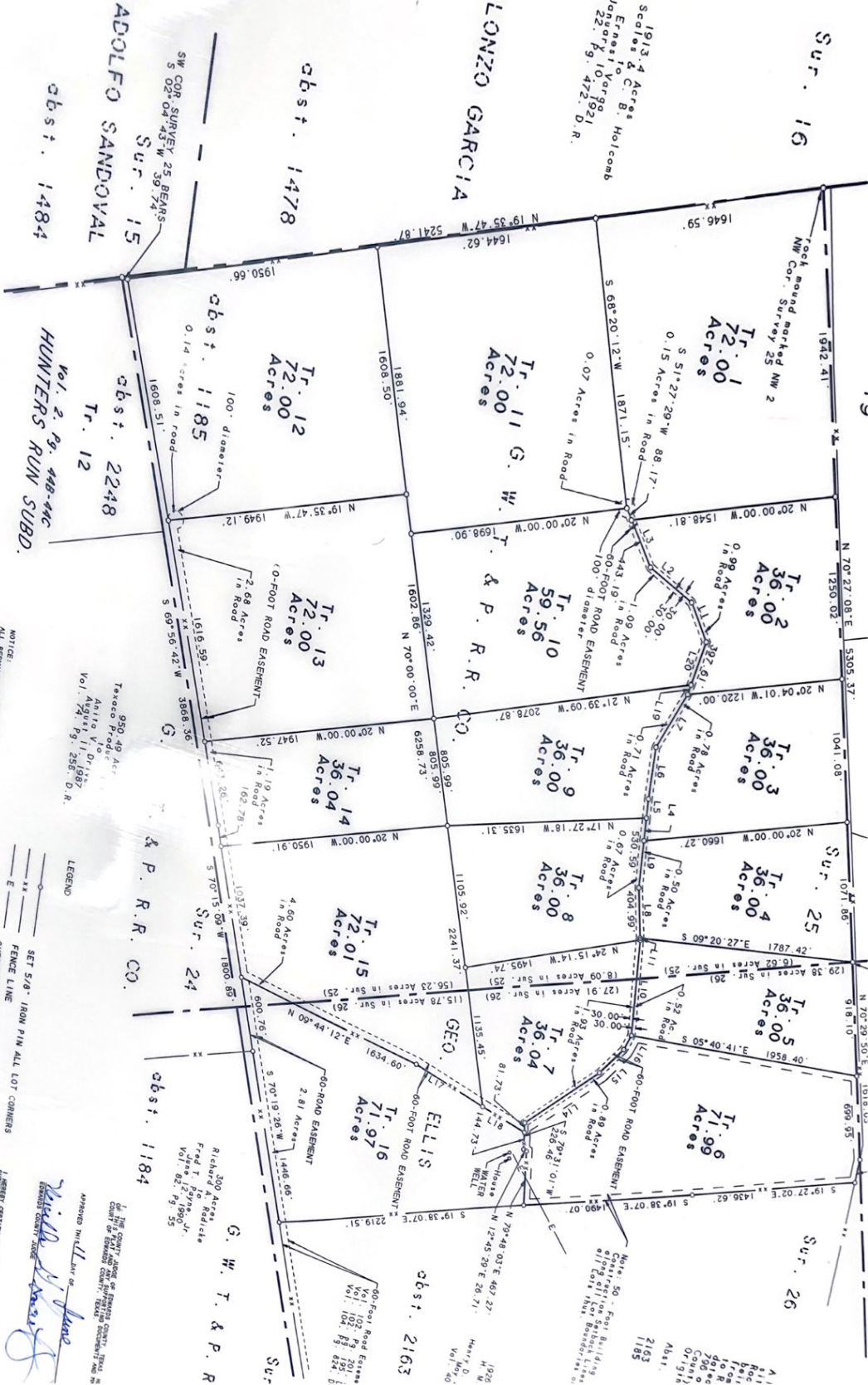


Scale 1" = 600'.
 LARINGS SHOWN HEREON ARE
 CALCULATED FROM SURVEY
 STATIONS MADE ON OR
 NEAR THE PROPERTY SHOWN

C. P. Sealers & Co. B. Holcomb
 Ernest & C. B. Holcomb
 Vol. 22, P. 10, 1992
 Vol. 22, P. 9, 472, D.R.

ALONZO GARCIA

Bearing	Distance
2°-42'-30" W	309.30'
27°-29'-W	359.17'
17°-47'-W	356.02'
30°-19'-W	359.81'
10°-28'-W	360.00'
7°-02'-W	360.00'
7°-47'-W	360.00'
31°-W	360.00'
24°-W	360.00'
41°-W	784.55'
6°-W	286.04'
3°-E	132.04'
1°-E	662.10'
1°-E	412.22'
1°-E	72.03'
1°-E	324.63'



NOTICE:
 ALL FURNISHING RECORDS SHOULD BE
 A TOWN RECORD OF THE PLAT.

- LEGEND
- SET 5/8" IRON PIN ALL LOT CORNERS
 - FENCE LINE
 - OVERHEAD ELECTRIC LINE
 - COLORED RECORDS EDWARDS
 - PLAT RECORDS EDWARDS
 - COUNTY RECORDS EDWARDS

APPROVED THIS 11th Day of June
 1926
 COUNTY CLERK
 COUNTY OF BROWN, TEXAS

