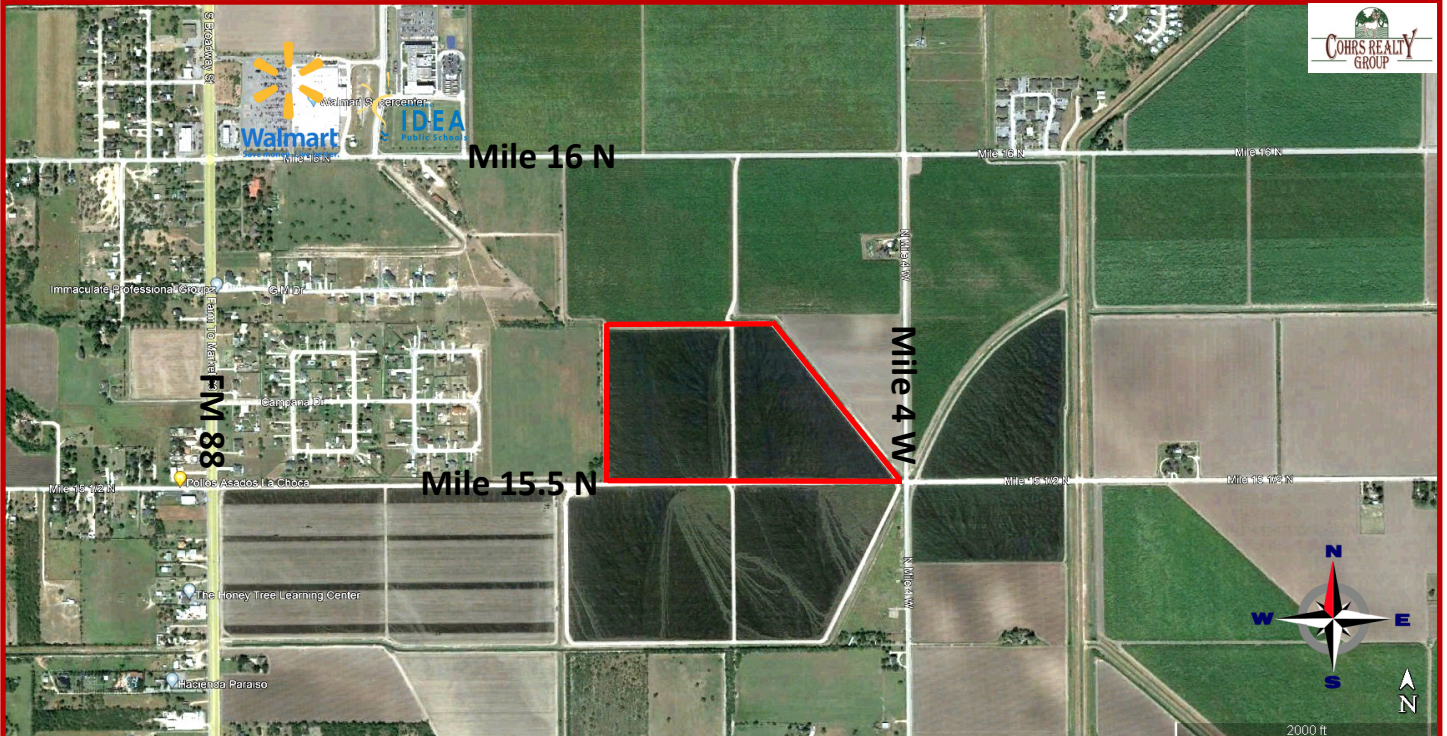


± 55 ACRES \$1,100,000

COHRS REALTY GROUP **FOR SALE**
(956) 464-7355
WWW.COHRS.COM

Mile 15.5 N. - Elsa, Texas



55 +/- Acres - Mile 15.5 N

Elsa, Hidalgo County, Texas

This is not a survey and used for illustration purposes only.

Cohrs Realty Group 202 N. D. Salinas Blvd., Donna, Texas 78537 www.cohrs.com

Jonathan Cohrs, Broker • (956) 330-1878 Cell • (956) 464-7355 Office