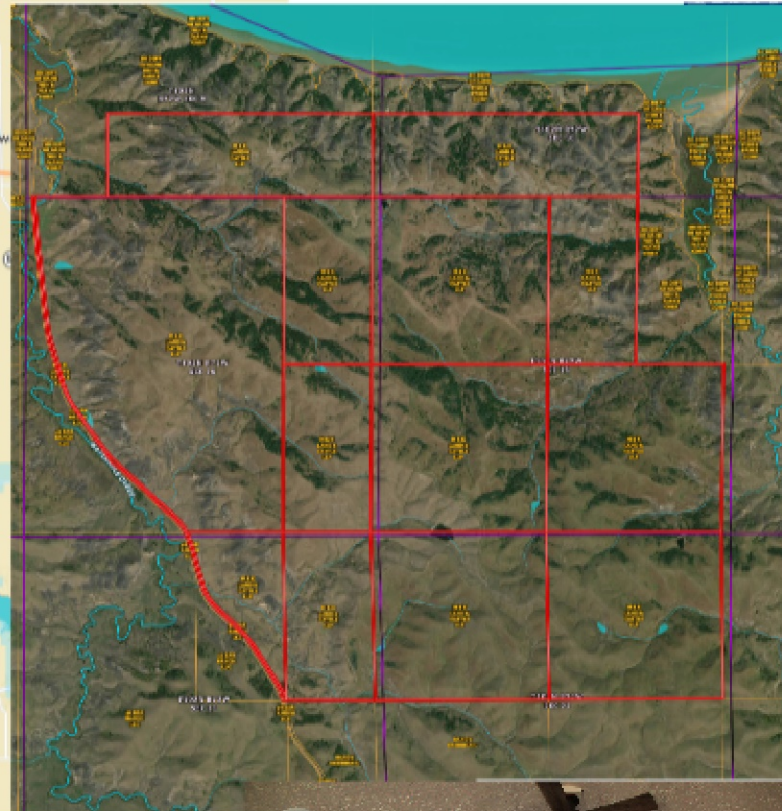
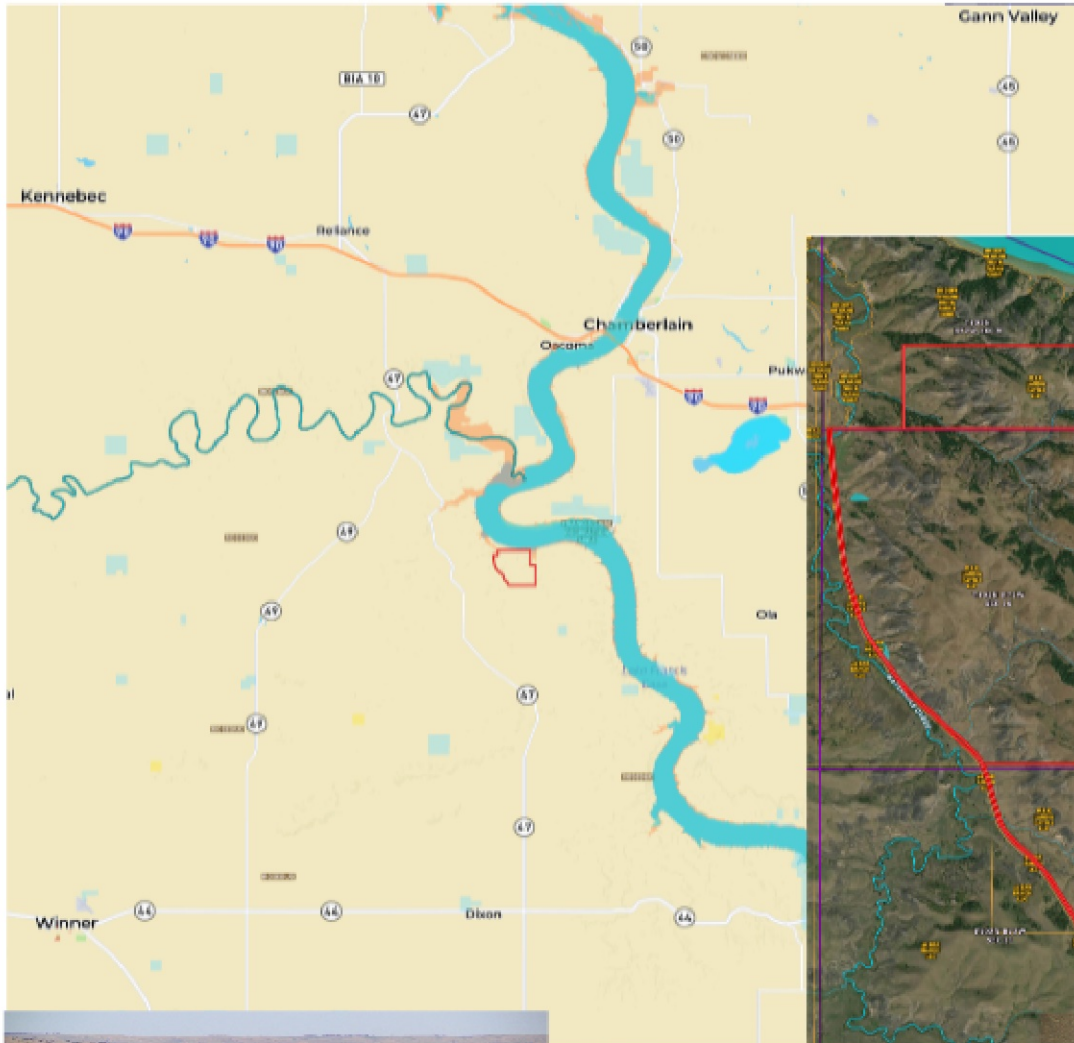


1769.5 (+/-) Acres, in Lyman Co, SD

\$2950/Acre



1769.5 acres of grazing land along the Missouri River. 1 artesian well and 12 tire tank locations with Tripp County Rural Water hydrants. This property will run approximately 175 pairs of cattle for 5 months. Multiple fenced pastures with the property for rotation. Breath-taking views of the Missouri River. Great mule and whitetail deer hunting! Don't let this one get away.