



Alabama**LandAgent.com**

Land • Farms • Lake Property

Chad Camp
205-478-4974



568+/- ACRES

Oneonta, AL ~ GPS 33.970224, -86.490807

Whited Lake Farm - 568+/- Acres Reminiscent of the Smokey Mountains but right in Blount County, AL. 30+/- Acre Private Lake with Cabin Sites along the Lake or build on the ridges of Sand Mountain for Magnificent Lake and Mountain Views. Only 1 Hour from Birmingham. Lake is approximately 3,600 Ft. Long from end to end with 300-400 Widths from shoreline to shoreline at various points. Approximately maximum depths of 24 feet and 5 feet deep at the Pier. This could be your Dream Lake or like Ray Scott's famous Legacy Lake to fish for Large Mouth Bass. Property fronts 3 different paved roads Highway 231, Ebell Road & Palisades Parkway) at 4 locations. Property is just down the street from famous Palisades Park. 1+/- Acre Pond. Miles of trails to ride horses or atv's. Beautiful hardwood and plenty of deer activity. Seller will not divided but could easily be divided among family, friends or developers. Multi Generational opportunity to build the family compound with multiple homesteads locations and farming opportunities for growing crops, fruit orchards or raising farm animals. There you can find old pecan trees and peach trees. Over 40+/- acres of open pasture land that could be farmed with opportunity to additional 70+/- acres. County CO-OP is just 15 minutes away. Stock Yard in St. Clair is only 30 Minutes from the property. Water Sport opportunities include fishing, water skiing, jetski, wave runner, canoeing and kayaking. This could make a great addition to Palisades Park for a RV Camp ground, Church or Business Retreat Camp. See Garmin Depth Levels along most of the lake are available in the Brochure. Property includes a 3BR 2BA Home and 2BR 1BA. Public Water and Power is available.

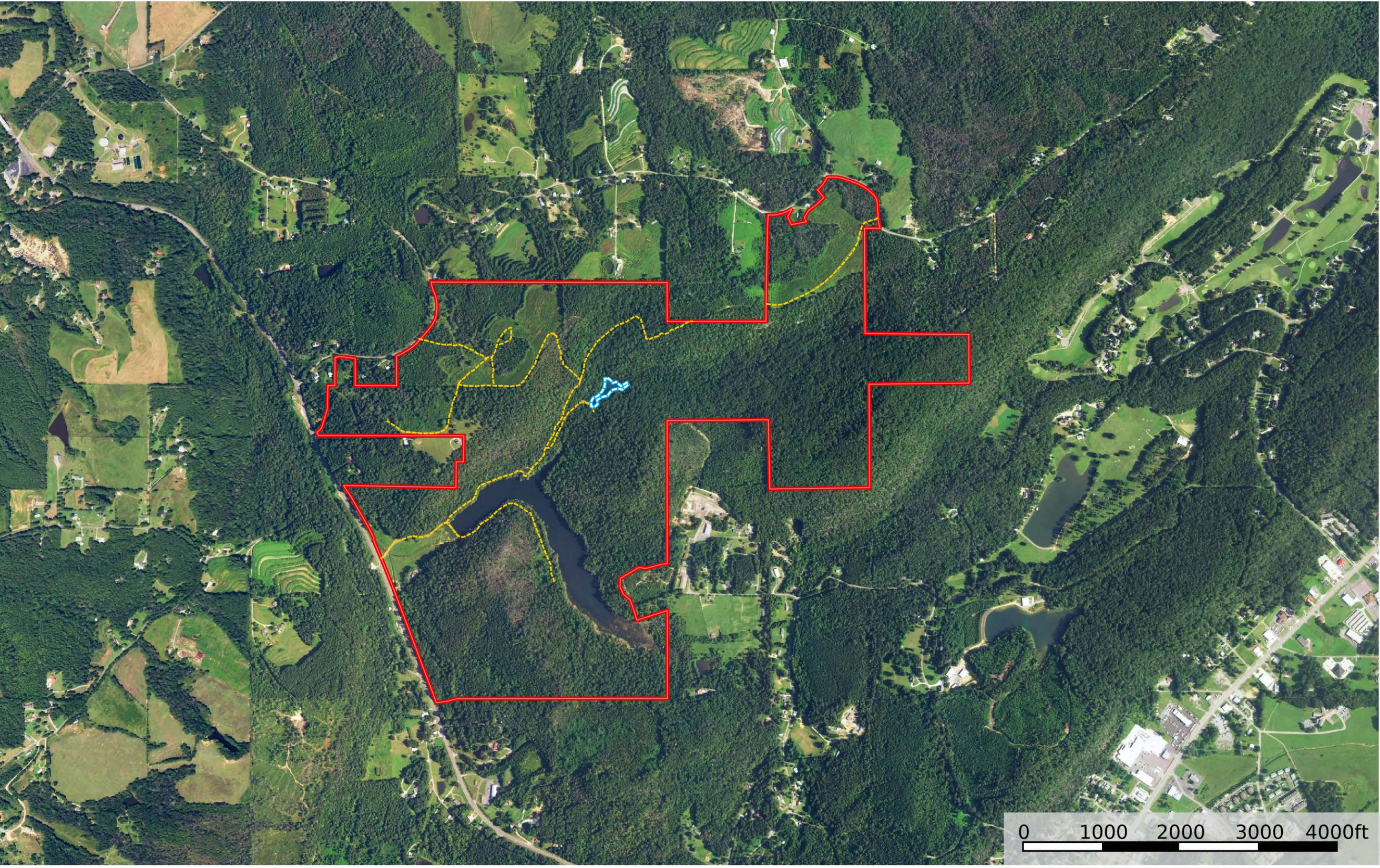
Chad Camp
(205) 478-4974



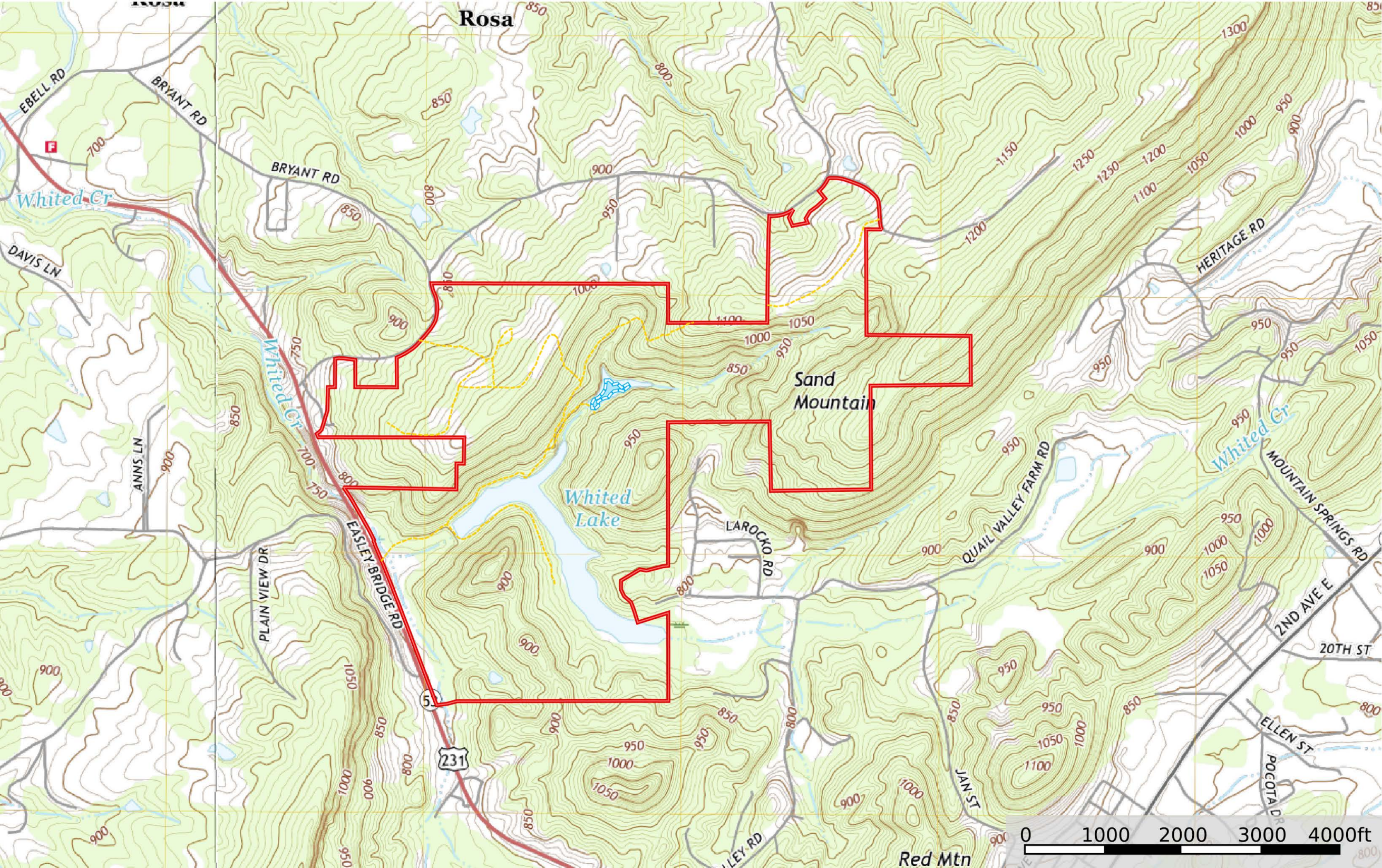
Alabama**LandAgent.com**

Land • Farms • Lake Property





0 1000 2000 3000 4000ft



Rosa

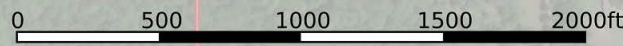
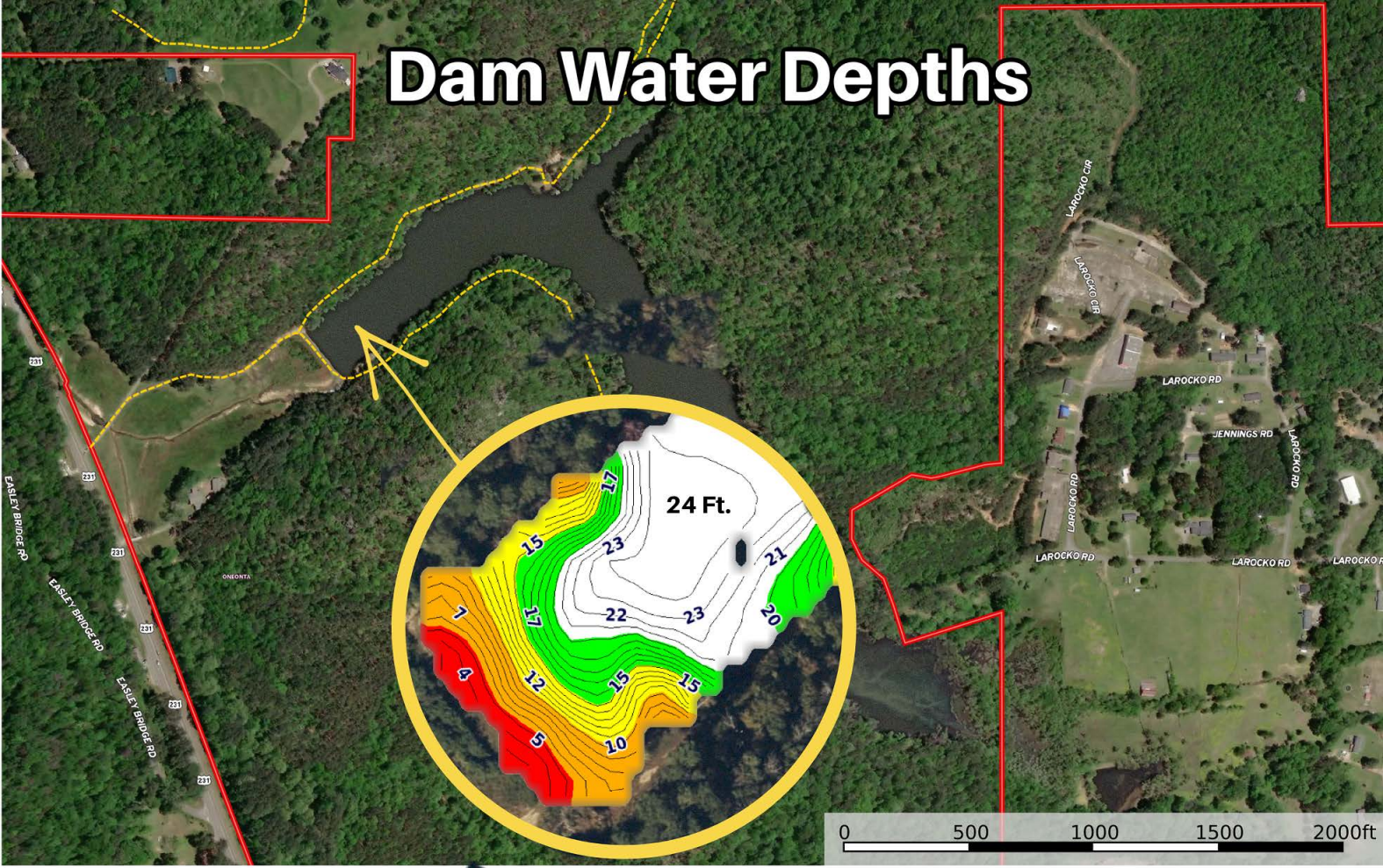
Sand Mountain

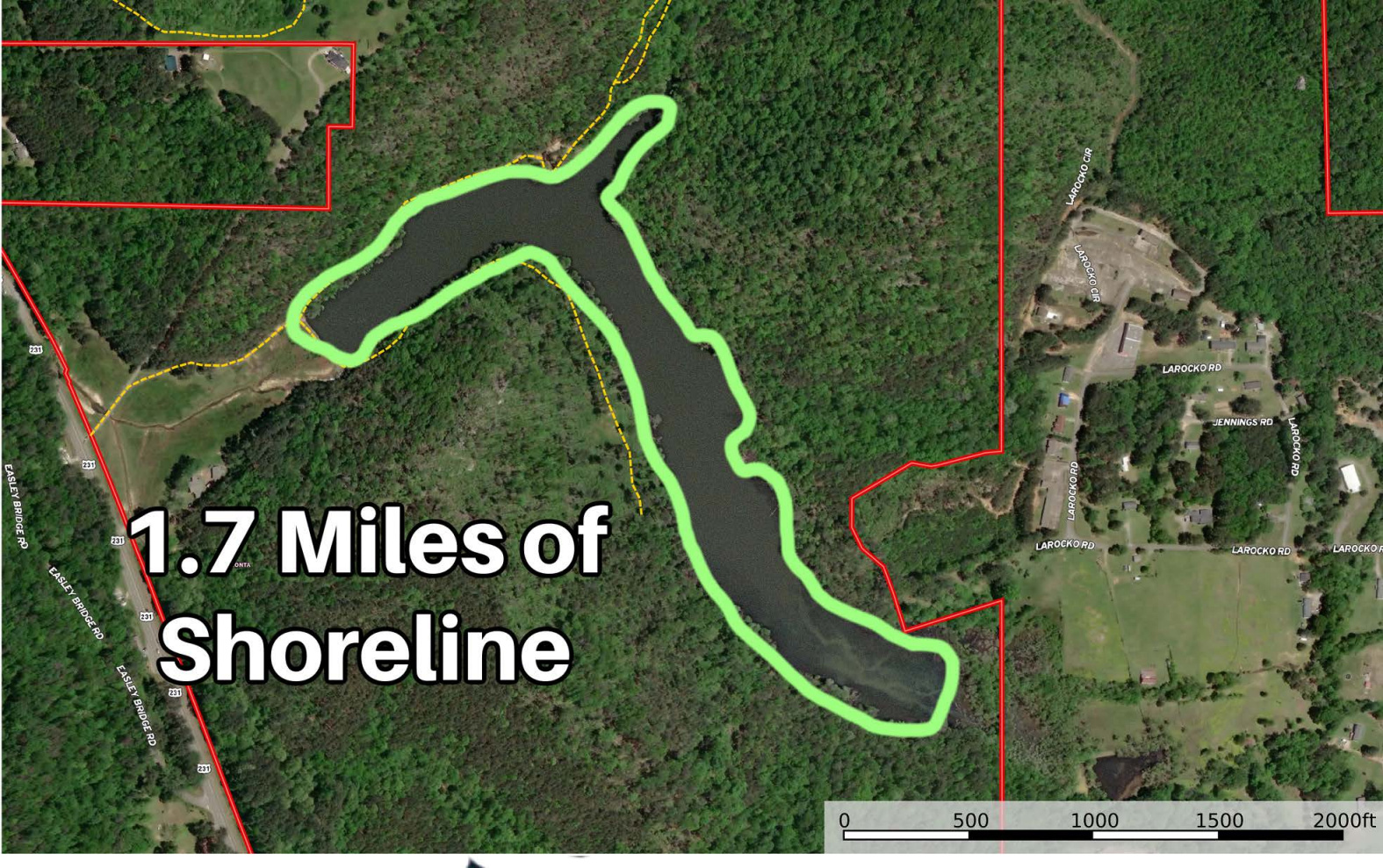
White Lake

Red Mtn



Dam Water Depths

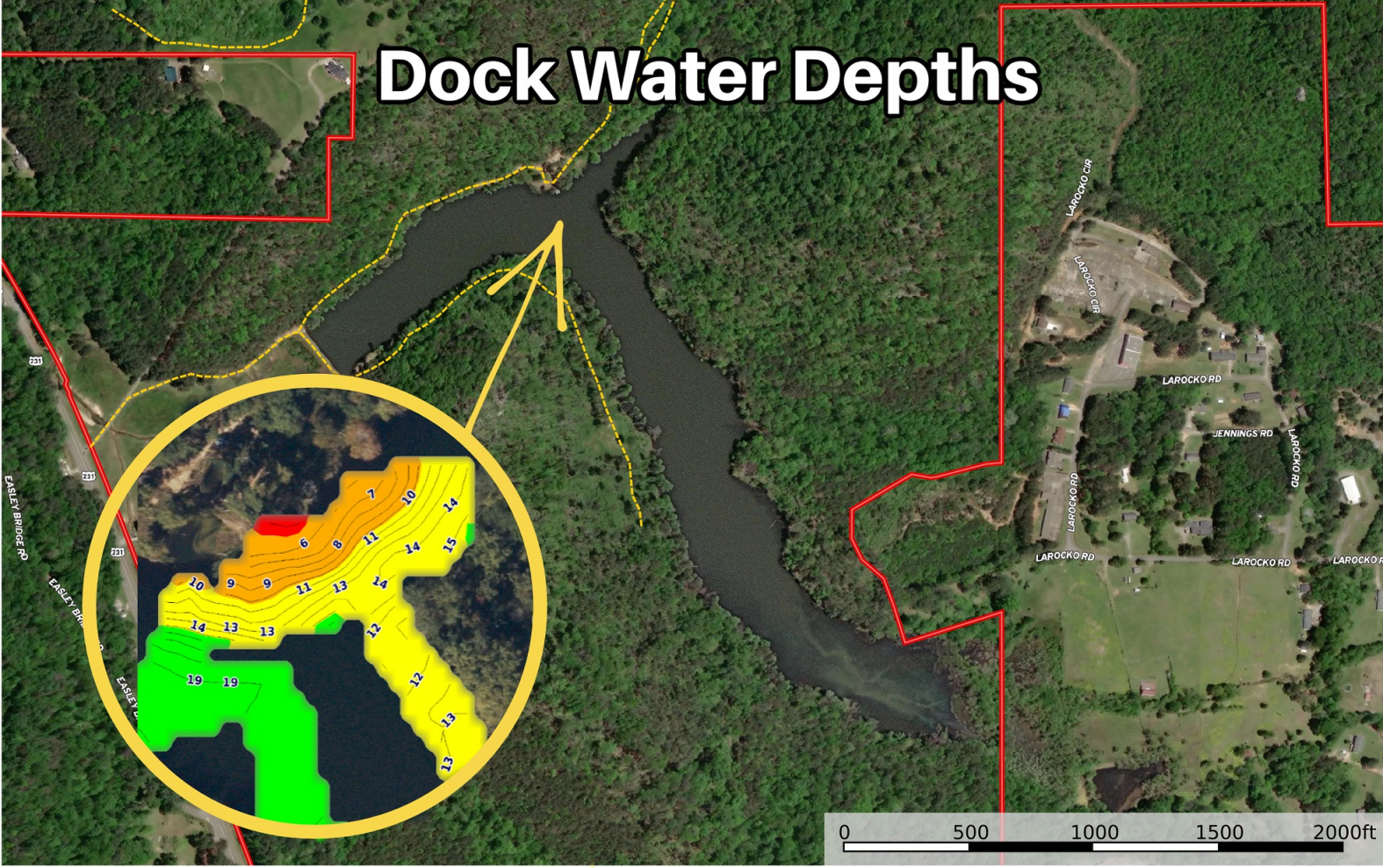




**1.7 Miles of
Shoreline**

0 500 1000 1500 2000ft

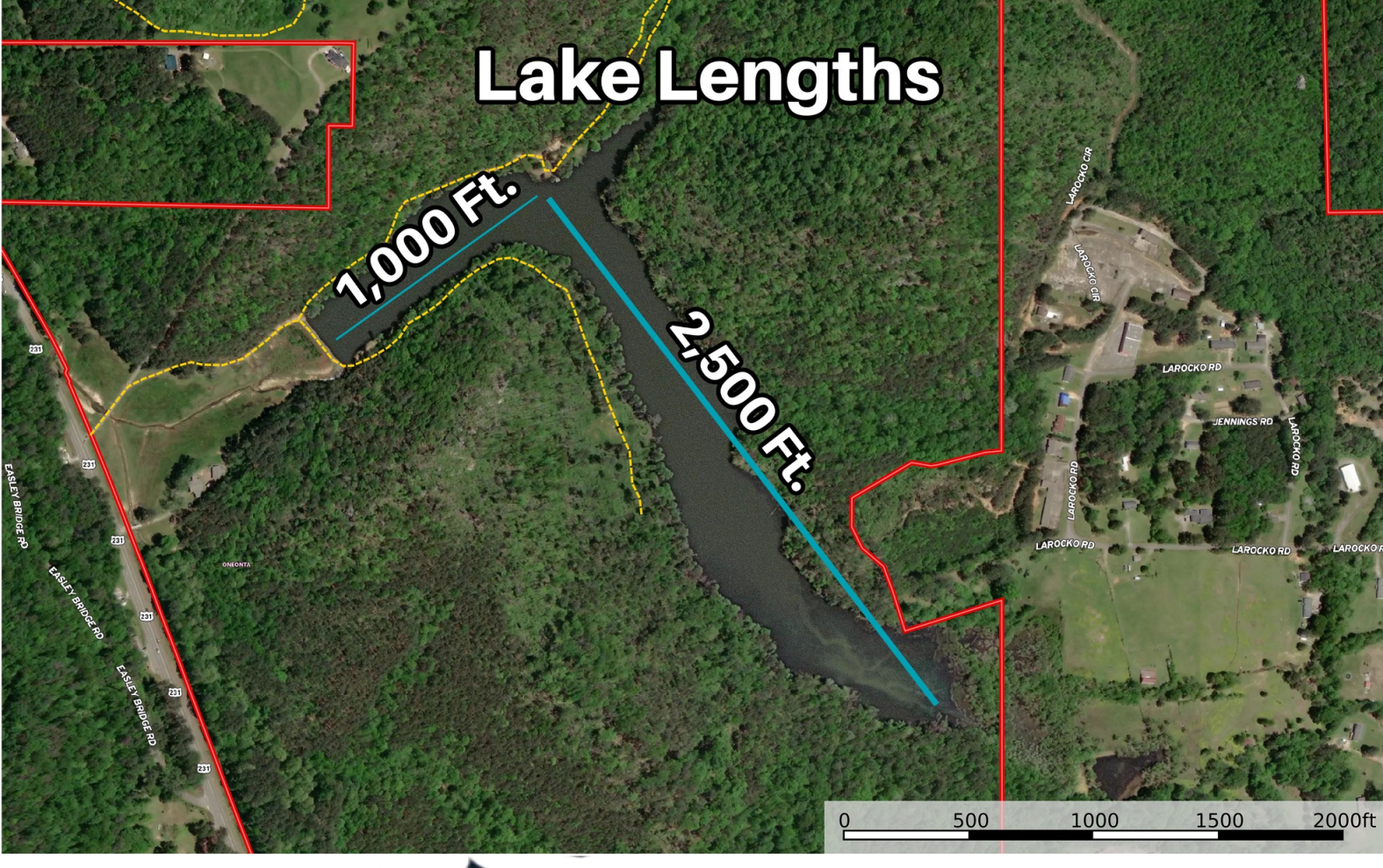
Dock Water Depths



Lake Lengths

1,000 Ft.

2,500 Ft.



0 500 1000 1500 2000ft