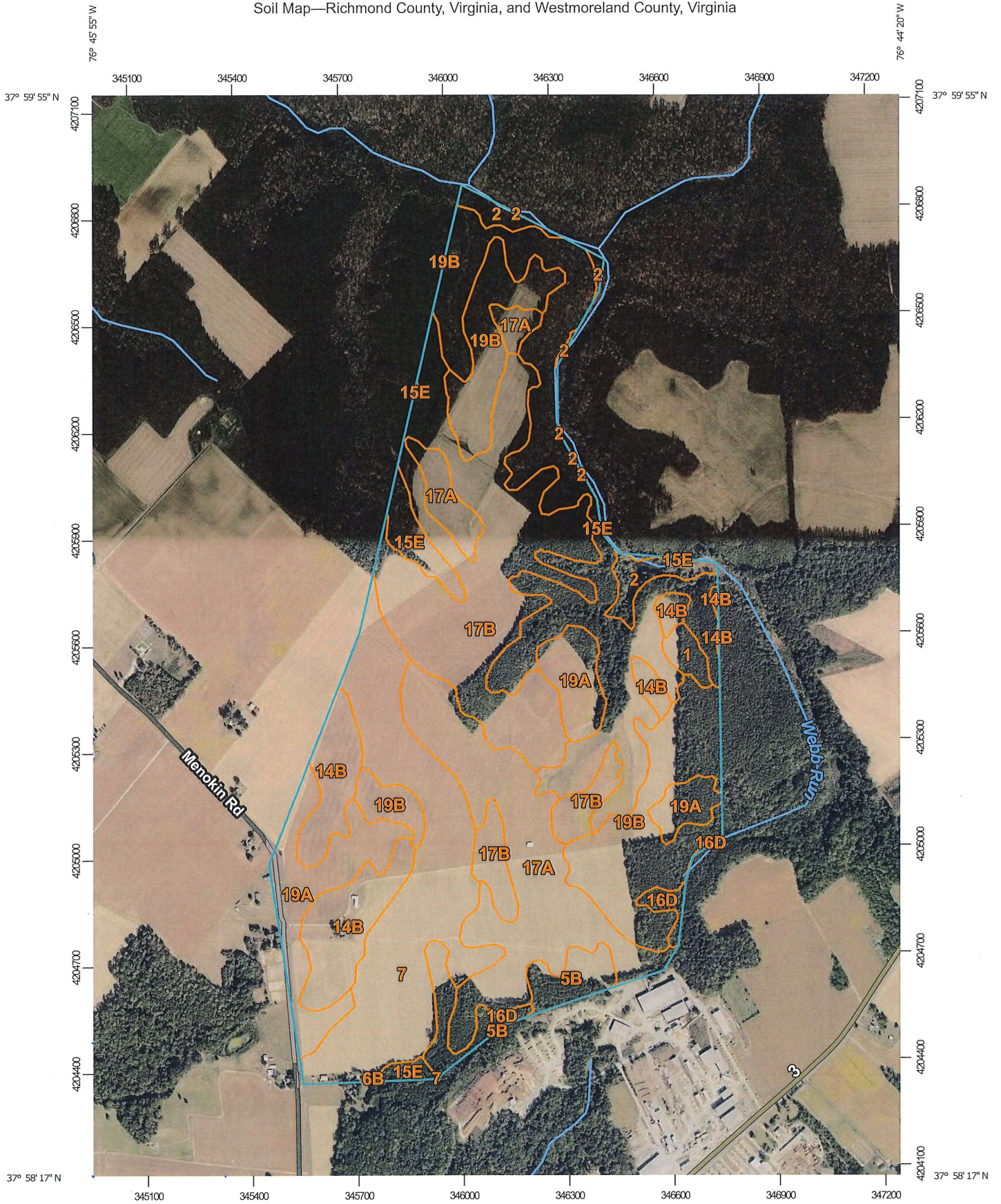
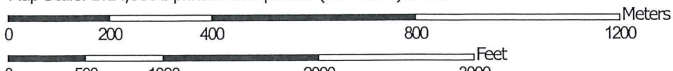


Soil Map—Richmond County, Virginia, and Westmoreland County, Virginia



Map Scale: 1:14,800 if printed on A portrait (8.5" x 11") sheet.



Map projection: Web Mercator Corner coordinates: WGS84 Edge tics: UTM Zone 18N WGS84





## Map Unit Legend

Map Unit Symbol	Map Unit Name	Acres in AOI	Percent of AOI
1	Atlee silt loam	3.4	0.7%
2	Bibb and Levy soils	9.5	2.0%
5B	Emporia loam, 2 to 6 percent slopes	7.5	1.5%
6B	Kempsville sandy loam, 2 to 6 percent slopes	0.2	0.0%
7	Kempsville loam	67.8	13.9%
14B	Rumford loamy sand, 0 to 6 percent slopes	34.5	7.1%
15E	Rumford soils, 15 to 50 percent slopes	91.3	18.8%
16D	Rumford and Tetotum soils, 6 to 15 percent slopes	10.3	2.1%
17A	Savannah fine sandy loam, 0 to 2 percent slopes	66.8	13.7%
17B	Savannah fine sandy loam, 2 to 6 percent slopes	94.4	19.4%
19A	Suffolk sandy loam, 0 to 2 percent slopes	39.6	8.1%
19B	Suffolk sandy loam, 2 to 6 percent slopes	61.4	12.6%
<b>Subtotals for Soil Survey Area</b>		<b>486.9</b>	<b>100.0%</b>
<b>Totals for Area of Interest</b>		<b>486.9</b>	<b>100.0%</b>

Map Unit Symbol	Map Unit Name	Acres in AOI	Percent of AOI
2	Bibb and Levy soils	0.0	0.0%
<b>Subtotals for Soil Survey Area</b>		<b>0.0</b>	<b>0.0%</b>
<b>Totals for Area of Interest</b>		<b>486.9</b>	<b>100.0%</b>



