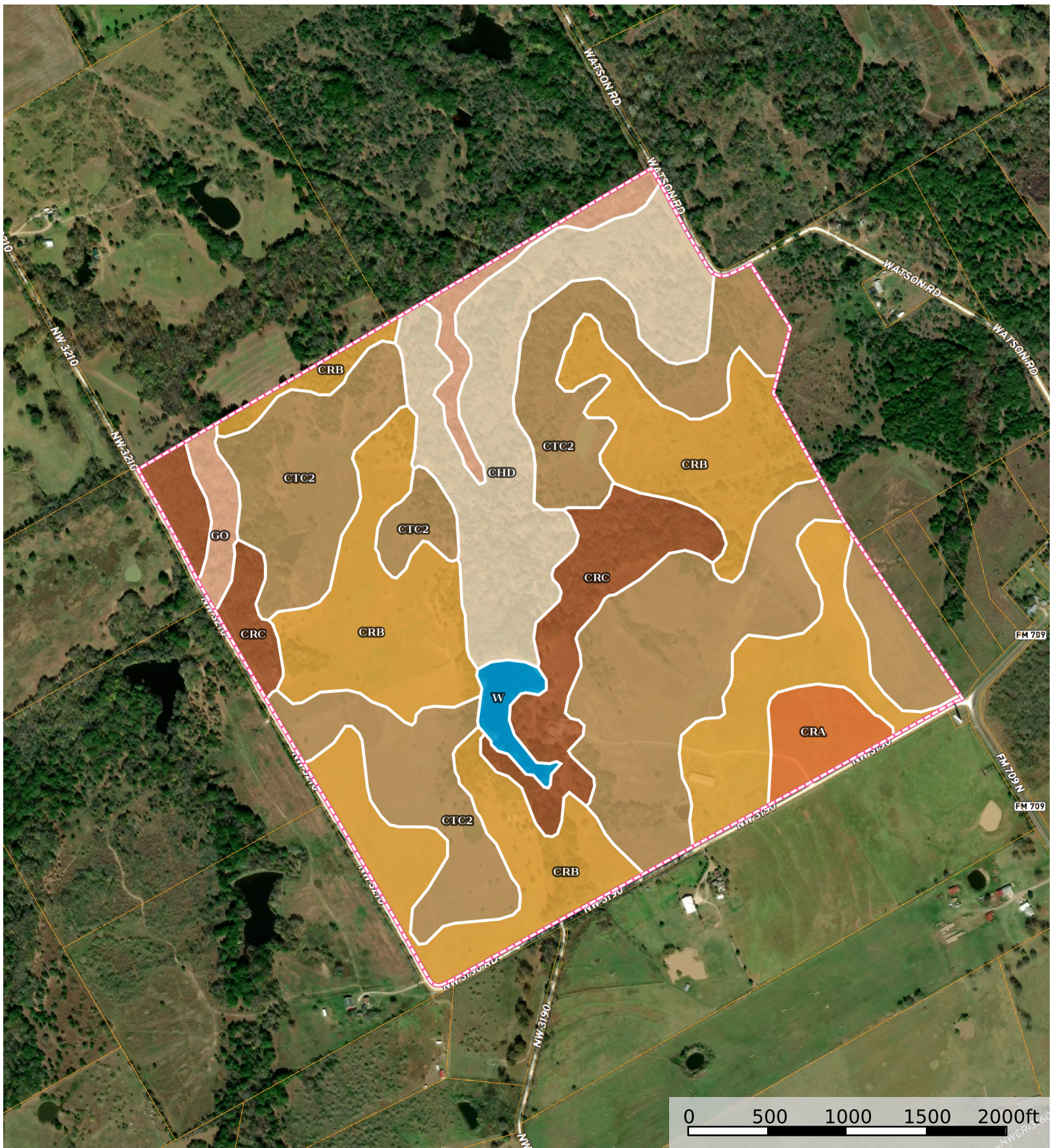



19000 NW Co Rd 3190
Texas, AC +/-



 Boundary

Boundary 332.29 ac

SOIL CODE	SOIL DESCRIPTION	ACRES	%	CPI	NCCPI	CAP
CtC2	Crockett soils, 2 to 5 percent slopes, eroded	124.74	37.54	0	50	3e
CrB	Crockett fine sandy loam, 1 to 3 percent slopes	104.88	31.56	0	55	3e
ChD	Chickasha fine sandy loam, 3 to 8 percent slopes	48.06	14.46	0	50	4e
CrC	Crockett fine sandy loam, 3 to 5 percent slopes	30.43	9.16	0	51	3e
Go	Gowen fine sandy loam, frequently flooded	11.52	3.47	0	45	5w
CrA	Crockett fine sandy loam, 0 to 1 percent slopes	8.44	2.54	0	38	3s
W	Water	4.22	1.27	0	-	-
TOTALS		332.29(*)	100%	-	50.56	3.22

(*) Total acres may differ in the second decimal compared to the sum of each acreage soil. This is due to a round error because we only show the acres of each soil with two decimal.

