

GRAND CANYON SUBDIVISION UNIT 4

CONSISTING OF 3 SHEETS IN THE COUNTY OF COCONINO A SUBDIVISION OF SECTION 24 & PART OF THE EAST 1/2 OF SECTIONS 23 & 26, T.26N, R.2E; THE SOUTH 1/2 OF THE SOUTH 1/2 OF SECTION 19, T.26N, R.3E; G&S.R.B.M., COCONINO COUNTY, ARIZONA

RECORDED BY REQUEST OF David T. Wiley
Surveyor's A. D. 15 26 & 1425
C. Date: 12/1/82 Page: 129 of 241
of Coconino County, Arizona. City: Phoenix County: Coconino

State of Arizona
County of Coconino

KNOW ALL MEN BY THESE PRESENTS That Arizona Lipnob Estates, Inc., an Arizona corporation, and Pyramid Investors, Inc., an Arizona corporation, do hereby certify that the above described GRAND CANYON SUBDIVISION Unit 4, consisting of 3 sheets in the County of Coconino, Arizona, is a subdivision of Section 24 and part of Sections 23 and 26, T.26N, R.2E, and the South 1/2 of the South 1/2 of Section 19, T.26N, R.3E, and that part of Sections 23 and 26, T.26N, R.2E, lying east of State Highway 66, G&S.R.B.M., Coconino County, Arizona, as shown and stated herein, and that each lot, tract and street constituting same on said plat, and that each lot, tract and street shall be known by the number, letter or name given to each respectively on said plat, as shown on said plat and included in the aforesaid premises contained or described for public utilities, or as noted.

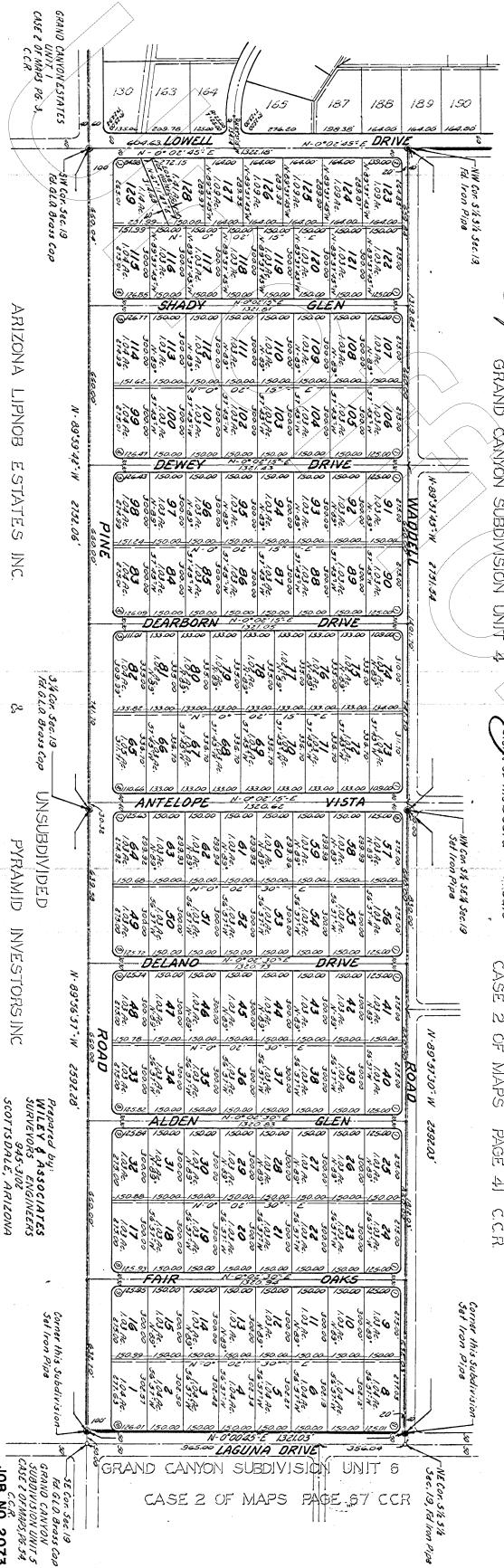
IN WITNESS WHEREOF, Arizona Lipnob Estates, Inc. and Pyramid Investors, Inc. Officers, hereto caused the corporate names to be signed and the corporate seals to be affixed, and the same to be attested to by the signatures of the undersigned officers, hereto duly authorized:

ARIZONA LIPNOB ESTATES, INC.
on this 10th day of January, 1982
By Steven A. Smith President
John Holtz Secretary

PYRAMID INVESTORS, INC.
on this 10th day of January, 1982
By Sam Kovars President
Philip Barker Secretary

This is to certify that the survey and subdivision of the above described premises entitled herein was made under my supervision during the month of December, 1981, all boundaries and other corners were run and set prior to the recording of this plat, and are located as shown.

David M. Wiley
Donal M. Wiley, Registered Surveyor
1982
No. 100



GRAND CANYON SUBDIVISION UNIT 4
CASE 2 OF MAPS PAGE 41 CCR

GRAND CANYON SUBDIVISION UNIT 6
CASE 2 OF MAPS PAGE 67 CCR

State of Arizona
County of Coconino

On this 7th day of January, 1982 before me, the undersigned officer, appeared Steven A. Smith and John Holtz, who acknowledged themselves to be the President and Secretary, respectively, of Arizona Lipnob Estates, Inc., an Arizona corporation, and that they, as such officers, respectively, being duly authorized, so to do, executed the foregoing instrument for the purpose herein contained by signing the name of the corporation in the presence of me as such officers, respectively.

IN WITNESS WHEREOF, I have set my hand and official seal.

My Commission Expires: OCT. 15, 1971
Sam E. Caldwell
Notary Public

On this 2nd day of January, 1982 before me, the undersigned officer, appeared Philip Barker and Sam Kovars, who acknowledged themselves to be the President and Secretary, respectively, of Pyramid Investors, Inc., an Arizona corporation, and that they, as such officers, respectively, being duly authorized, so to do, executed the foregoing instrument for the purpose herein contained by signing the name of the corporation in the presence of me as such officers, respectively.

IN WITNESS WHEREOF, I have set my hand and official seal.

My Commission Expires: OCT. 15, 1971
Sam E. Caldwell
Notary Public

This plat was checked for conformances with the approved Health, Subdivision and Zoning Regulations of Coconino County, and appears to comply thereto.

Health Dept. W.E. Hinkle Date 1-5-82 Highway Dept. P.M. Spick Date 1-6-82
Senior Sanitarian
Planning & Zoning Walter Wharton Date 1-5-82
Chairman
Board of Supervisors Ed Hoyle Date 1-5-82
Chairman

POPULATION UTILITY DISBURSEMENT

● Indicates a corner of this subdivision

LOT	AREA	PERCENT	TOTAL
1	4,520	90.00%	5,000
2	2,500	50.00%	5,000
3	2,500	50.00%	5,000
4	2,500	50.00%	5,000
5	2,500	50.00%	5,000
6	2,500	50.00%	5,000
7	2,500	50.00%	5,000
8	2,500	50.00%	5,000
9	2,500	50.00%	5,000
10	2,500	50.00%	5,000
11	2,500	50.00%	5,000
12	2,500	50.00%	5,000

