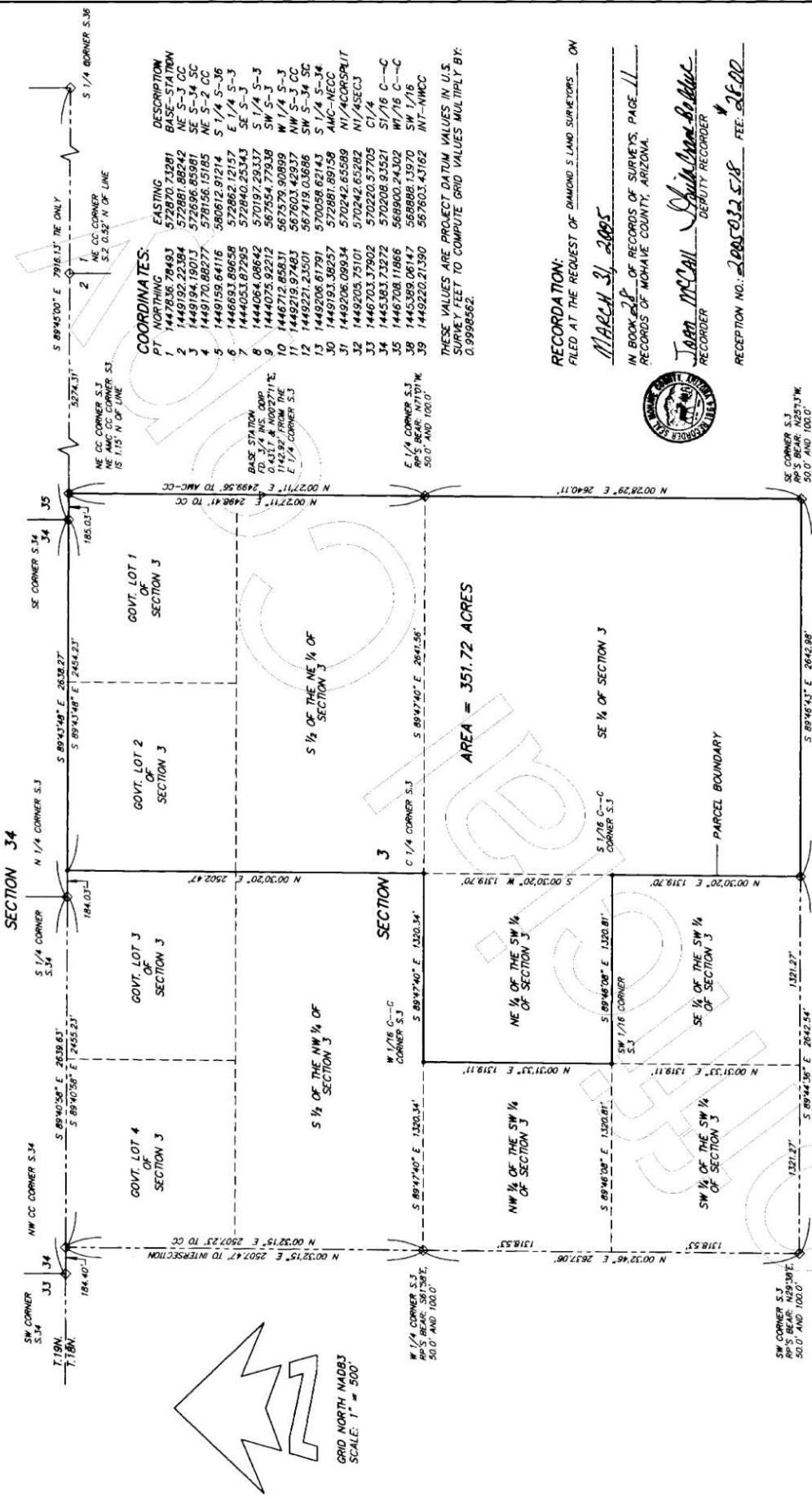


RECORD OF SURVEY: RETRACEMENT AND SUBDIVISIONAL SURVEY OF FRACTIONAL SECTION 3, T.18N., R.18W., G.&S.R.M., MOHAVE COUNTY, ARIZONA.



COORDINATES:

PT.	NORTHING	EASTING	DESCRIPTION
1	1447836.79493	572870.13281	BASE-STATION
2	1449192.22384	572881.88242	NE S-3 CC
3	1449194.19013	572696.85981	SE S-34 SC
4	1449170.88277	578156.15185	NE S-2 CC
5	1449159.64116	580612.91214	S 1/4 S-36
6	1446693.89658	572862.12157	E 1/4 S-3
7	1444053.87295	572840.25343	SE S-3
8	1444064.08642	570197.29337	S 1/4 S-3
9	1444075.92212	567554.77938	SW S-3
10	1446712.85831	567579.90899	W 1/4 S-3
11	1446919.97483	567603.42837	NW S-3 CC
12	1446921.23501	567419.03686	SW S-34 SC
13	1449206.81791	570058.62143	S 1/4 S-34
14	1449206.09034	572881.89158	AMC-NECC
15	1449205.75101	570242.65589	N1/ACORSPLIT
16	1446703.37902	570220.57705	N1/4SECC
17	1445363.73272	570208.93521	C1/4
18	1445708.11866	568900.24302	S1/16 C-C
19	1445399.06147	568888.13970	W1/16 C-C
20	1445220.21390	567603.43162	INT-AMCC

THESE VALUES ARE PROJECT DATUM VALUES IN U.S. SURVEY FEET TO COMPUTE GRID VALUES MULTIPLY BY: 0.9998562.

RECORDATION:
FILED AT THE REQUEST OF DIAMOND S LAND SURVEYORS ON
MARCH 31, 2005
IN BOOK 285 OF RECORDS OF SURVEYS, PAGE 11
RECORDS OF MOHAVE COUNTY, ARIZONA.
Joan McCall
RECORDER
DEPUTY RECORDER



RECEPTION NO.: 2005032518 FEE: 28.00



DIAMOND S LAND SURVEYORS, P.O. BOX 6134, KINGMAN, AZ 86402
DRAWN BY: J.M. KESLER, RLS. USMS DATE: MARCH 29, 2005
FILE NO.: JASSECJ.DWG SHEET 1 OF 1

NOTES:
[1] BEARINGS SHOWN ARE BASED ON THE WEST ZONE ARIZONA STATE PLANE COORDINATE SYSTEM (NAD83) CODE 0203 AS DETERMINED USING GPS TECHNOLOGY. ALL COORDINATES AND LENGTHS IN U.S. SURVEY FEET.
[2] \diamond = FOUND USGLO STONE MARKED AS APPROVED IN THE OFFICIAL FIELD RECORD.
[3] \circ = SET 2 1/2 INS. OD ALUMINUM CAP 30 INS. LONG WITH ALUMINUM CAP STAMPED 2005, RLS 23391 - 8904 WITH IDENTITY AS SHOWN HEREON.
[4] \circ = SET 1/2 INS. REBAR W/YELLOW PLASTIC CAP RLS 8904.
[5] DISTANCES SHOWN ARE GROUND TO OBTAIN GRID MULTIPLY BY 0.9998562.