



COMMERCIAL REAL ESTATE

INDUSTRIAL PROPERTY FOR SALE



Bowen Farm Road Warehouse and Land

225 Bowen Farm Road, Quincy, FL 32351

CLARK SMITH

Associate
850.510.6333
csmith@tlgproperty.com

BEN WILKINSON

Partner/Broker
850.509.5258
benw@tlgproperty.com

TLG REAL ESTATE SERVICES

3520 Thomasville Road, Suite 200
Tallahassee, FL 32309
O: 850.385.6363



EXECUTIVE SUMMARY

BOWEN FARM ROAD WAREHOUSE AND LAND

225 BOWEN FARM ROAD, QUINCY, FL 32351

**OFFERING SUMMARY****Sale Price:** \$495,000.00**Lot Size:** 6.54 +/- Acres**Warehouse Size:** 27,350 SF**APN:** 3-14-2N-5W-0000-00140-0000**PROPERTY OVERVIEW**

6.5 +/- acres available in Quincy, FL. There is a 27,350 sq. ft. warehouse on the premises, which will need renovations and a new roof due to damages from Hurricane Michael. This massive structure is constructed of concrete block & brick and features a loading door and electricity.

LOCATION OVERVIEW

Located in Quincy, FL, at the intersection of I-10 and SR 12, approximately 20 minutes from Tallahassee.

[Click Here for Zoning Information](#)

Clark Smith
850.510.6333
csmith@tlgproperty.com

Ben Wilkinson
850.509.5258
benw@tlgproperty.com

TLG REAL ESTATE SERVICES
3520 Thomasville Road, Suite 200, Tallahassee, FL 32309
850.385.6363

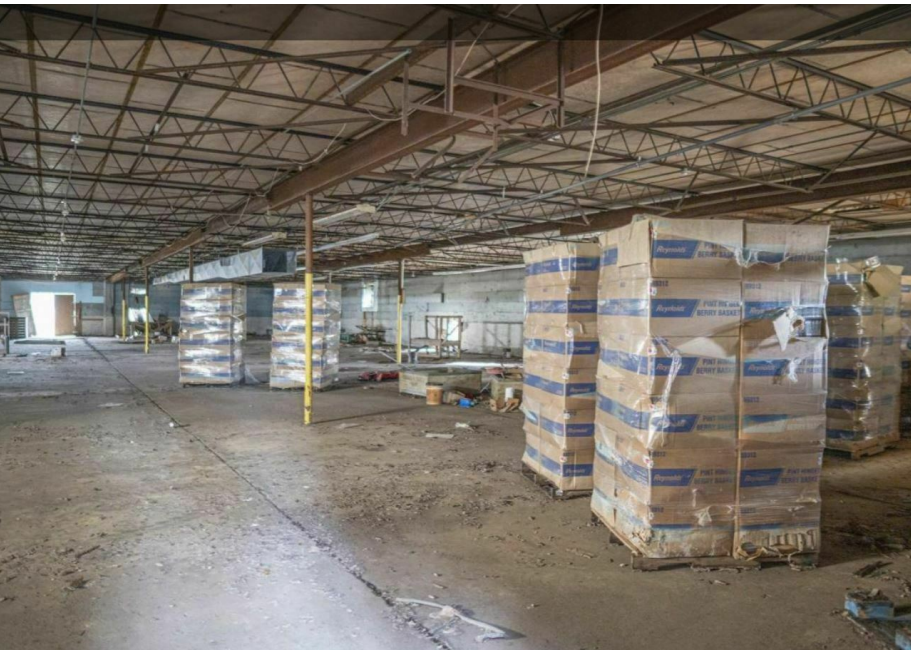




BLOCK & BRICK CONSTRUCTION, INTERIOR PHOTOS

BOWEN FARM ROAD WAREHOUSE AND LAND

225 BOWEN FARM ROAD, QUINCY, FL 32351



Clark Smith
850.510.6333
csmith@tlgproperty.com

Ben Wilkinson
850.509.5258
benw@tlgproperty.com

TLG REAL ESTATE SERVICES
3520 Thomasville Road, Suite 200, Tallahassee, FL 32309
850.385.6363





INTERIOR & ACCESS ROAD

BOWEN FARM ROAD WAREHOUSE AND LAND

225 BOWEN FARM ROAD, QUINCY, FL 32351



Clark Smith
850.510.6333
csmith@tlgproperty.com

Ben Wilkinson
850.509.5258
benw@tlgproperty.com

TLG REAL ESTATE SERVICES
3520 Thomasville Road, Suite 200, Tallahassee, FL 32309
850.385.6363





PARCEL MAP

BOWEN FARM ROAD WAREHOUSE AND LAND

225 BOWEN FARM ROAD, QUINCY, FL 32351



Clark Smith
850.510.6333
csmith@tlgproperty.com

Ben Wilkinson
850.509.5258
benw@tlgproperty.com

TLG REAL ESTATE SERVICES
3520 Thomasville Road, Suite 200, Tallahassee, FL 32309
850.385.6363

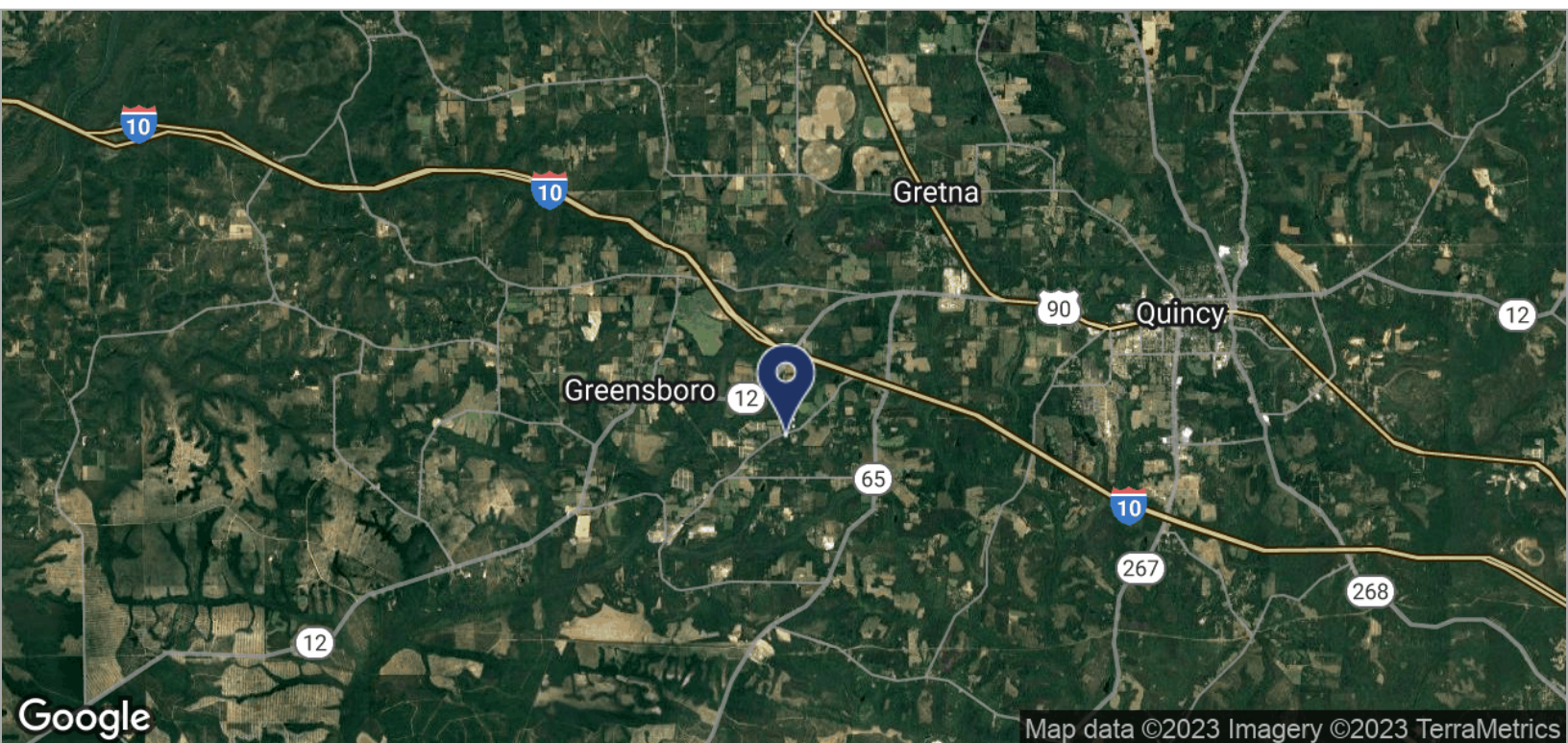




LOCATION MAPS

BOWEN FARM ROAD WAREHOUSE AND LAND

225 BOWEN FARM ROAD, QUINCY, FL 32351



Clark Smith
 850.510.6333
 csmith@tlgproperty.com

Ben Wilkinson
 850.509.5258
 benw@tlgproperty.com

TLG REAL ESTATE SERVICES
 3520 Thomasville Road, Suite 200, Tallahassee, FL 32309
 850.385.6363

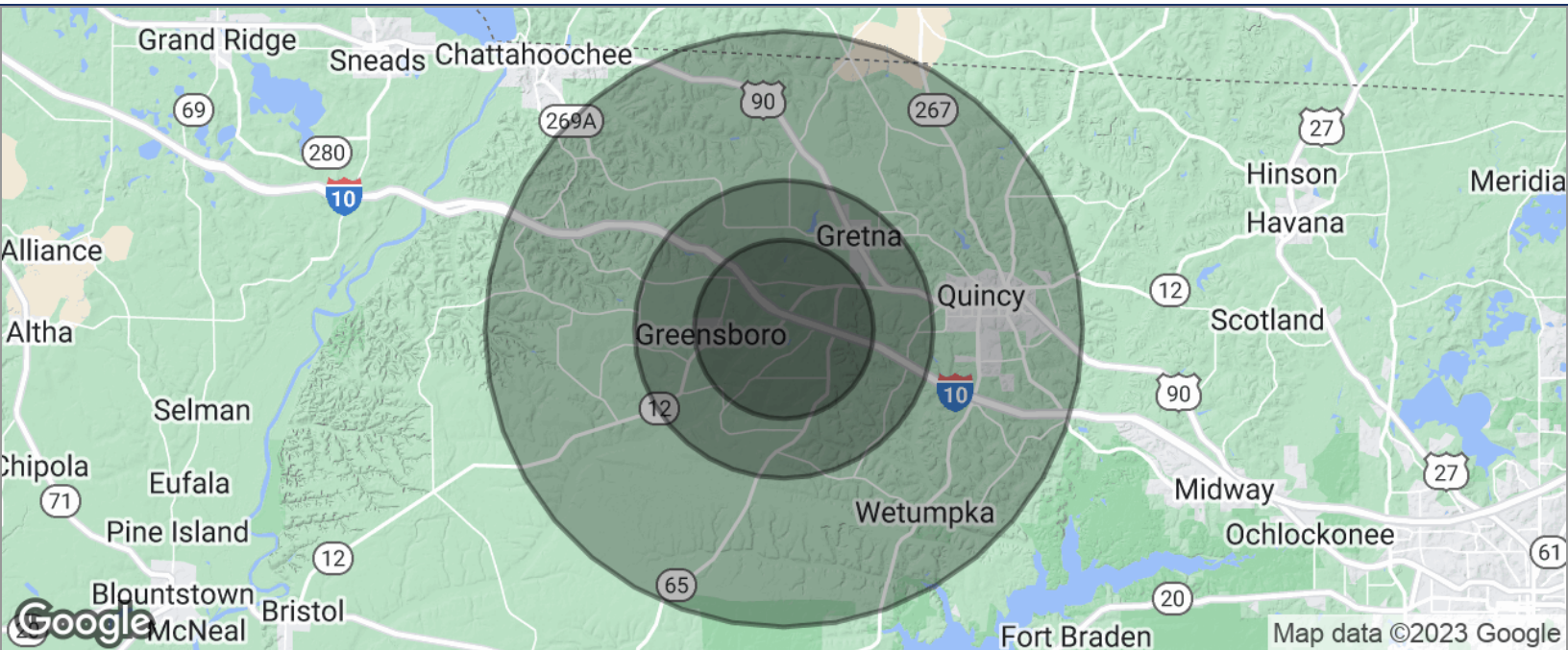




DEMOGRAPHICS MAP

BOWEN FARM ROAD WAREHOUSE AND LAND

225 BOWEN FARM ROAD, QUINCY, FL 32351



POPULATION	3 MILES	5 MILES	10 MILES
TOTAL POPULATION	2,390	6,459	24,365
MEDIAN AGE	37.6	37.5	38.8
MEDIAN AGE (MALE)	34.4	35.3	36.5
MEDIAN AGE (FEMALE)	39.3	38.7	41.0
HOUSEHOLDS & INCOME	3 MILES	5 MILES	10 MILES
TOTAL HOUSEHOLDS	809	2,226	10,274
# OF PERSONS PER HH	3.0	2.9	2.4
AVERAGE HH INCOME	\$41,307	\$40,417	\$39,137
AVERAGE HOUSE VALUE	\$100,411	\$94,878	\$106,821

* Demographic data derived from 2020 ACS - US Census

Clark Smith
850.510.6333
csmith@tlgproperty.com

Ben Wilkinson
850.509.5258
benw@tlgproperty.com

TLG REAL ESTATE SERVICES
3520 Thomasville Road, Suite 200, Tallahassee, FL 32309
850.385.6363

