

Jeff Davis Co. Farm

Hazlehurst

663 Rhonda Coleman Rd, Hazlehurst, GA, USA

1,512 Acres

\$9,850,000.00

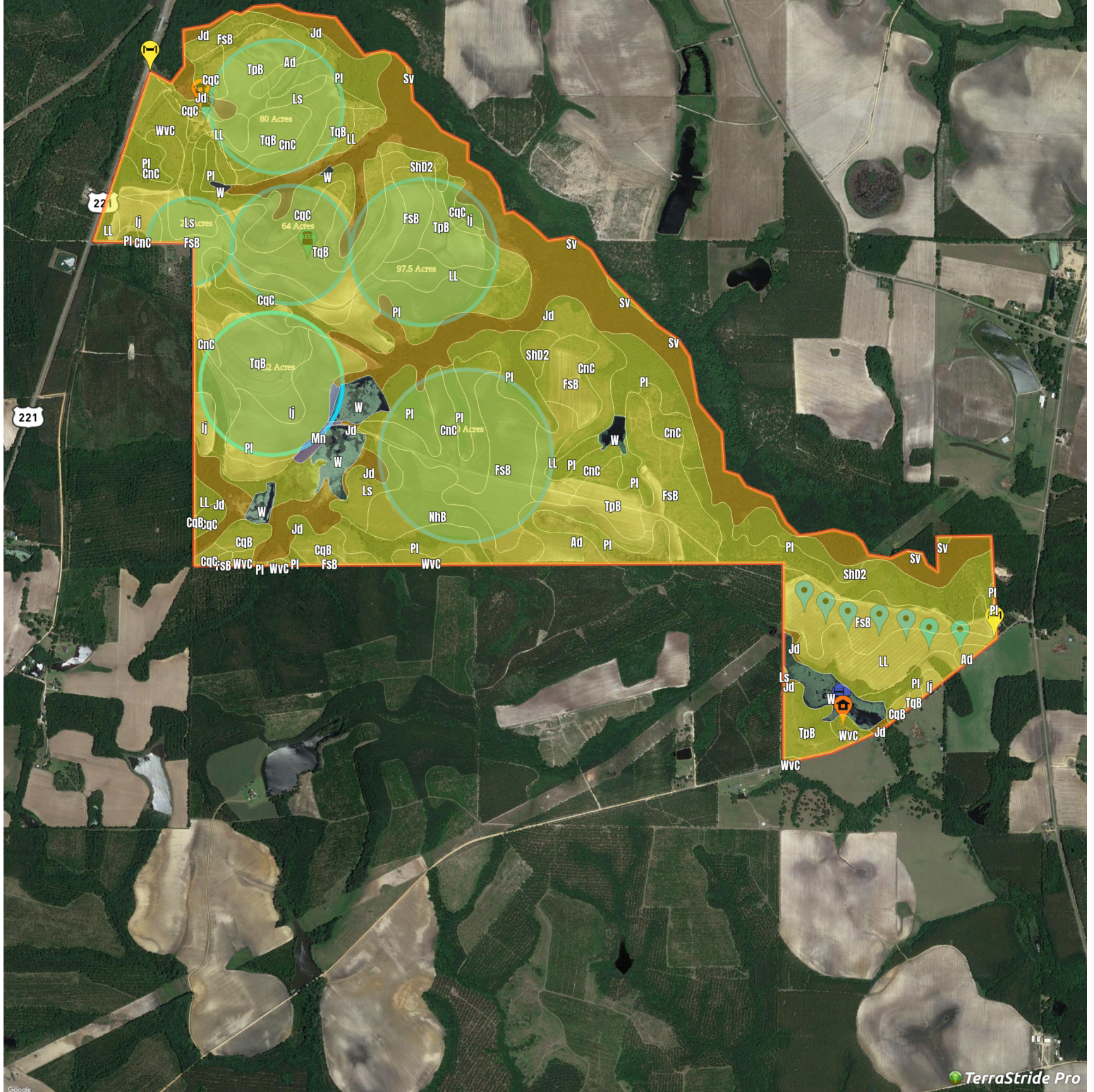


Lindy Dorminy Bengston

(229) 206-2713

lindy@lindystownandcountry.com


<http://www.lindystownandcountry.com>



Jeff Davis Co. Farm

Legend


• Custom Point

 Well

 Dock

A Text Label

 Gate

 Structure



Boundary

Description

Irrigated Farmland in Jeff Davis County! This Farm is the ideal investment tract with 625 acres under pivot. 6 pivots serviced by a 12" Diesel Well. There is 200 acres of Longleaf Pines planted in 2015. Rolling acres of pasture land and multiple ponds for your cattle. Old Homesite near the Rhonda Coleman entrance with boathouse and dock.

Generated on: July 12, 2023

Jeff Davis Co. Farm

Soil Report

Symbol	Map Unit Description	Farmland class	Area (AC)	Available Water Storage (0-150cm - Weighted Average)	Flooding Frequency (Maximum)	Drainage Class (Dominant Condition)	Drainage Class (Wettest Component)	Hydric Classification	Water Table Depth (Annual Minimum)	Water Table Depth (April to June Minimum)	Bedrock Depth (Minimum)	Soil Order
Pl	Pelham loamy sand	Not prime farmland	0	14.6	Frequent	Poorly drained	Poorly drained	100	15	15	0	Ultisols
Jd	Johnston and Rains soils	Not prime farmland	0	20.6	Frequent	Very poorly drained	Very poorly drained	100	0	0	0	Inceptisols
FsB	Fuquay loamy sand, 0 to 5 percent slopes	Farmland of statewide importance	0	14.3	None	Well drained	Well drained	0	152	0	0	Ultisols
CnC	Carnegie loamy sand, 5 to 8 percent slopes	All areas are prime farmland	0	17.9	None	Well drained	Well drained	0	0	0	0	Ultisols
TqB	Tifton loamy sand, 2 to 5 percent slopes	All areas are prime farmland	0	16.8	None	Well drained	Well drained	0	137	0	0	Ultisols
LL	Leefield soils	Farmland of statewide importance	0	13.3	None	Somewhat poorly drained	Somewhat poorly drained	5	61	0	0	Ultisols
CqC	Cowarts loamy sand, 5 to 8 percent slopes	All areas are prime farmland	0	17.6	None	Well drained	Well drained	0	0	0	0	Ultisols
TpB	Troup sand, 0 to 5 percent slopes	Not prime farmland	0	12.6	None	Somewhat excessively drained	Somewhat excessively drained	0	0	0	0	Ultisols
ShD2	Sunsweet sandy loam, 5 to 12 percent slopes, eroded	Not prime farmland	0	13.7	None	Well drained	Well drained	0	0	0	0	Ultisols
Ij	Irvington loamy sand	All areas are prime farmland	0	18.0	None	Somewhat poorly drained	Somewhat poorly drained	0	46	46	0	Ultisols
W	Water	Not prime farmland	0	0.0				0	0	0	0	
NhB	Norfolk loamy sand, 2 to 5 percent slopes	All areas are prime farmland	0	19.7	None	Well drained	Well drained	0	153	0	0	Ultisols
Ad	Albany sand	Not prime farmland	0	6.9	None	Somewhat poorly drained	Somewhat poorly drained	5	53	0	0	Ultisols
Ls	Leefield loamy sand	Farmland of statewide importance	0	13.3	None	Somewhat poorly drained	Somewhat poorly drained	5	61	0	0	Ultisols
WvC	Wicksburg gravelly coarse sand, 2 to 8 percent slopes	Farmland of statewide importance	0	16.0	None	Well drained	Well drained	0	0	0	0	Ultisols
CqB	Cowarts loamy sand, 2 to 5 percent slopes	All areas are prime farmland	0	17.6	None	Well drained	Well drained	0	0	0	0	Ultisols
Mn	Mascotte sand	Farmland of statewide importance	0	15.9	None	Poorly drained	Poorly drained	0	31	31	0	Spodosols
Sv	Surrency loamy sand	Not prime farmland	0	13.4	None	Very poorly drained	Very poorly drained	100	0	0	0	Ultisols