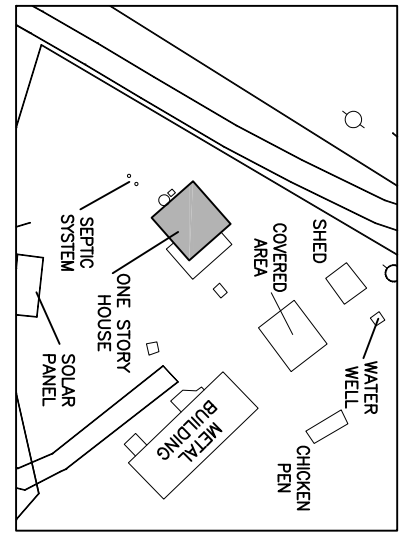
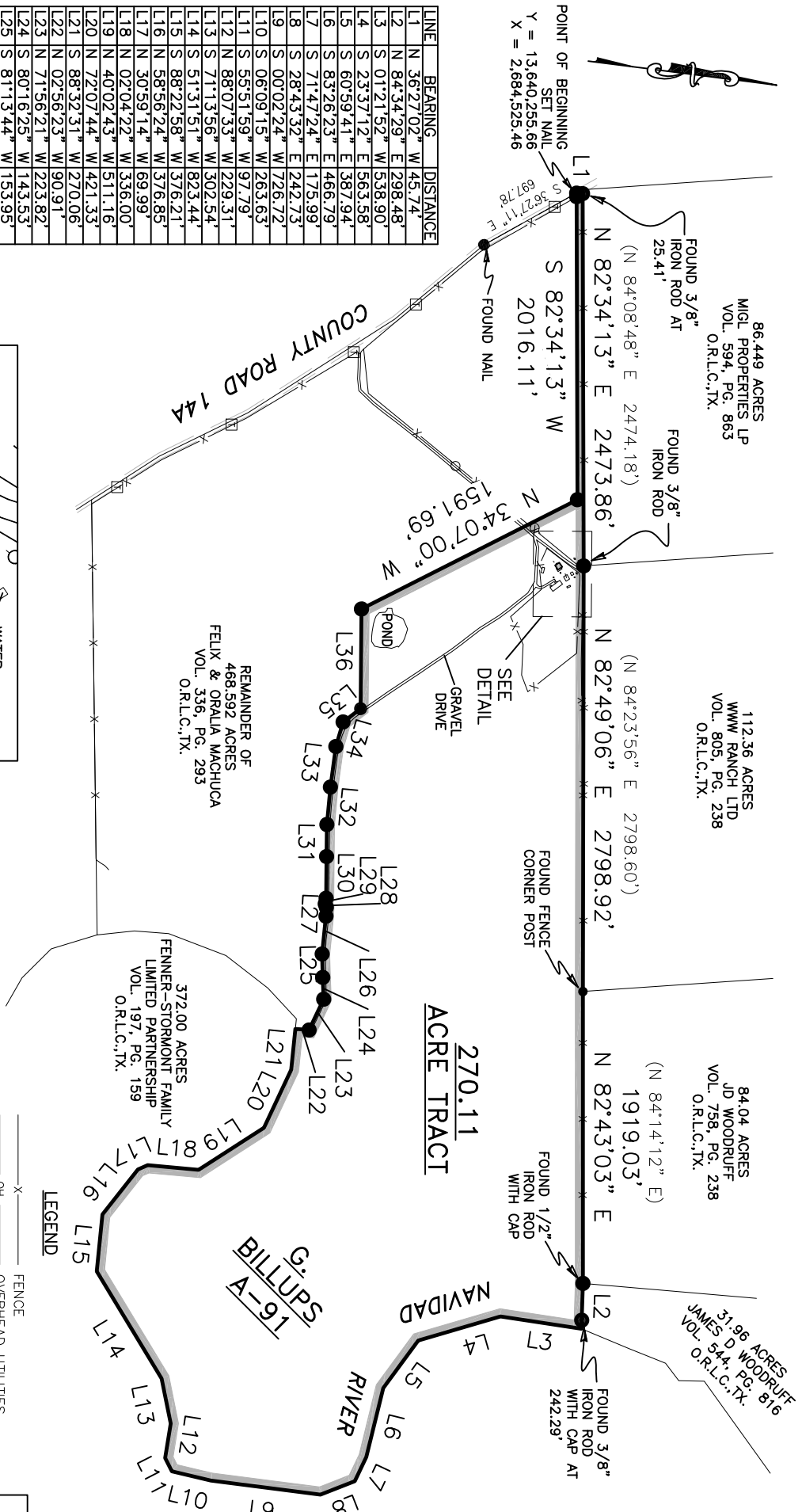


LINE	BEARING	DISTANCE
L1	N 36°27'02" W	45.74'
L2	N 84°34'29" E	298.48'
L3	S 01°21'52" W	538.90'
L4	S 23°37'12" E	563.58'
L5	S 60°59'41" E	387.94'
L6	S 83°26'23" E	466.79'
L7	S 71°47'24" E	175.99'
L8	S 28°43'32" E	242.73'
L9	S 00°02'24" W	726.72'
L10	S 06°09'15" W	263.63'
L11	S 55°51'59" W	97.79'
L12	N 88°07'33" W	229.31'
L13	S 71°13'56" W	302.54'
L14	S 51°31'51" W	823.44'
L15	S 88°22'58" W	376.21'
L16	N 58°56'24" W	376.85'
L17	N 30°59'14" W	69.99'
L18	N 02°04'22" W	336.00'
L19	N 40°02'43" W	511.16'
L20	N 72°07'44" W	421.33'
L21	S 88°32'31" W	270.06'
L22	N 02°56'23" W	90.91'
L23	N 71°56'21" W	223.82'
L24	S 80°16'25" W	143.53'
L25	S 81°13'44" W	153.95'
L26	S 88°30'07" W	249.62'
L27	S 85°25'18" W	59.03'
L28	S 64°21'50" W	23.68'
L29	N 88°15'05" W	37.79'
L30	S 83°17'20" W	273.73'
L31	S 83°15'43" W	210.70'
L32	S 88°10'58" W	247.60'
L33	N 89°36'37" W	268.98'
L34	N 80°55'48" W	168.03'
L35	N 44°31'51" W	144.48'
L36	S 83°14'39" W	655.67'

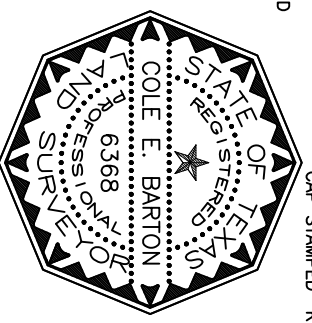
POINT OF BEGINNING  
 SET NAIL  
 Y = 13,640,255.66  
 X = 2,684,525.46



DETAIL  
 NOT TO SCALE

I HEREBY STATE THAT THIS PLAT SHOWS THE SUBJECT LOCATION AS SURVEYED ON THE GROUND TO THE BEST OF MY KNOWLEDGE.

*[Signature]*  
 COLE E. BARTON  
 REGISTERED PROFESSIONAL LAND SURVEYOR  
 LICENSE NO. 6368



LEGEND

- X ——— FENCE
- OH ——— OVERHEAD UTILITIES
- POWER POLE
- TELEPHONE PEDESTAL
- CLEAN OUT
- SET 5/8" IRON ROD WITH CAP STAMPED "RPLS 6368"

SCHEDULE B ITEMS:		
A.	174/2	D.R. DOES NOT AFFECT
D.	190/173	D.R. DOES NOT AFFECT
E.	207/304	D.R. DOES NOT AFFECT
F.	213/261	D.R. DOES NOT AFFECT
G.	263/430	D.R. DOES NOT AFFECT
H.	263/420	D.R. DOES NOT AFFECT
J.	155/348	O.R. DOES NOT HAVE DESCRIPTION
Y.	384/247	D.R. 166/689 O.R. DOES NOT AFFECT
Z.	388/894	D.R. DOES NOT AFFECT
JJ.	166/625	O.R. DOES NOT AFFECT
KK.	166/854	O.R. DOES NOT AFFECT
LL.	166/645	O.R. DOES NOT AFFECT
MM.	171/463	O.R. DOES NOT AFFECT
NN.	222/778	O.R. DOES NOT AFFECT
OO.	187/805	O.R. 222/782 O.R. DOES NOT AFFECT
PP.	191/200	O.R. 222/780 O.R. DOES NOT AFFECT
SS.	196/33	O.R. NO EASEMENT
WW.	676/874	O.R. BLANKET
XX.	684/582	O.R. BLANKET



2331 TOPICAL WIND DRIVE, CORPUS CHRISTI, TX 78414, (951) 208-4284  
 TEXAS LICENSED SURVEYING FIRM 105499S  
 THE INTEGRITY OF QUALITY AND PRECISION

**270.11 ACRE TRACT**  
 BEING OUT OF A GEORGE R. S. BILLUPS SURVEY, ABSTRACT 91, LAVACA COUNTY, TEXAS, ALSO BEING OUT OF A 468.592 ACRE TRACT CONVERTED FROM TRANSPORTATION EQUIPMENT, INC TO FELIX AND ORALIA MACHUCA BY CASH WARRANTY DEED DATED FEBRUARY 18, 2005 AND RECORDED IN VOLUME 336, PAGE 293 OF THE OFFICIAL RECORDS OF LAVACA COUNTY, TEXAS.

Completion Date:	12/7/20	File Name:	1807009
Scale:	1"=1000'	Surveyed by:	LB/CB
Drawn by:	DJ	Checked by:	AF/CB