

FOR SALE: 63+ACRES

904 N BULL GAP RD
TALKING ROCK, GA 30175

PROPERTY DETAILS:

- Location: Gilmer County
- 63.02 Acre Retreat
- 2,750 Creek Frontage
- 53 Acres Mixed Pine/ Hardwoods
- Access On both Sides
- 67 Miles To Atlanta
- Activities Include Hunting, Fishing, Hiking, and Camping
- 15 Minutes To Blue Ridge
- 7 Minutes to Ellijay

\$ 650,000



Southern Land Advisors is pleased to present For Sale this beautiful mountain property in Gilmer County. 63+ acres entirely wooded with pine and hardwood mix. There is over 2,750 of frontage on Price Creek with small waterfalls and the sounds of a mountain stream. The property has access on either side with Daniel Boone Rd on the West and N Bull Gap Rd on the East. This property could be a get-a-way retreat or could be developed into several large lots on Price Creek. If you are looking for privacy, beautiful views, and a mountain creek, you need to see this property.

North Georgia



INQUIRE TODAY



CONTACT US
FOR MORE INFORMATION
OR TO SCHEDULE A TOUR

THOMAS PORTER
Managing Director
(404) 996-6304
Thomas@SouthernLandAdvisors.com

SHAN MORRIS
Principle
(404) 822-7426
Shan@SouthernLandAdvisors.com



Even though obtained from sources deemed reliable, no warranty or representation, express or implied, is made as to the accuracy of the information herein, and it is subject to errors, omissions, change of price, rental or other conditions, withdrawal without notice, and to any special listing conditions imposed by our principals. Visit us at www.SouthernLandAdvisors.com for more information.

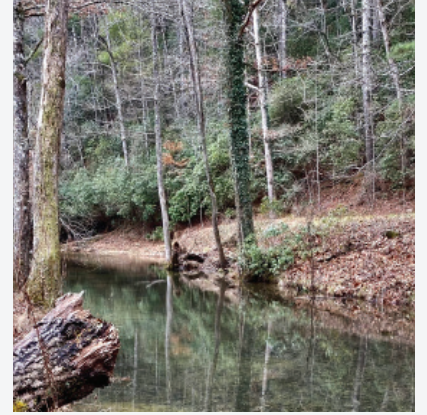
ONE OF A KIND GET-A-WAY



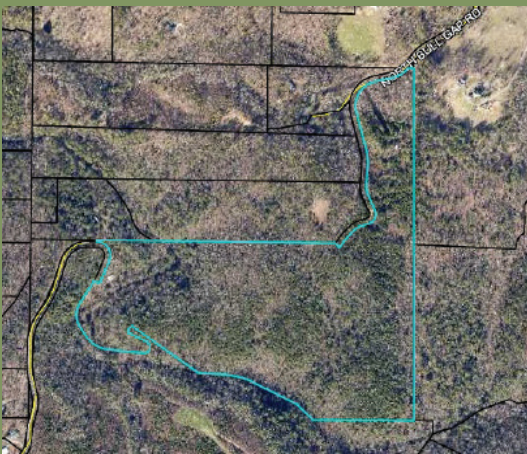
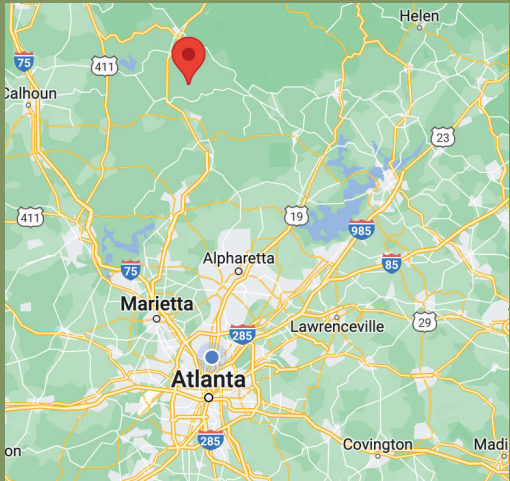
FOR SALE



63.02 ACRE RETREAT



GILMER COUNTY, GA



CONTACT US
FOR MORE INFORMATION
OR TO SCHEDULE A TOUR

THOMAS PORTER
Managing Director
(404) 996-6304
Thomas@SouthernLandAdvisors.com

SHAN MORRIS
Principle
(404) 822-7426
Shan@SouthernLandAdvisors.com



Even though obtained from sources deemed reliable, no warranty or representation, express or implied, is made as to the accuracy of the information herein, and it is subject to errors, omissions, change of price, rental or other conditions, withdrawal without notice, and to any special listing conditions imposed by our principals. Visit us at www.SouthernLandAdvisors.com for more information.