

**Residential and Commercial Lots**  
**Clarksdale, MS**  
**\$25,000 per lot**



**SMALLTOWN**  
HUNTING PROPERTIES  
& REAL ESTATE<sup>SM</sup>

Office 662-846-1425

# Property Profile

## Clarksdale Lots

### Location:

- Coahoma County, MS
- Located in the Clarksdale City Limits
- Fronts Martin Luther King Jr. Blvd. and Medical Drive

### Coordinates:

- 34.20777, 90.54429

### Property Information:

- 5 Lots Available
- 1 Lot Zoned R-10
- 4 Lots Zoned C-4

### Property Use:

- Residential and Commercial Opportunities

### Tax Information:

- Lot 4: 314-180631001-0000400 (\$253.44 for 2022)
- Lot 5: 314-180631001-0000500 (\$202.75 for 2022)
- Lot 18: 314-180633000-0000600 (\$202.75 for 2022)
- Lot 20: 314-180633000-0000400 (\$202.75 for 2022)
- Lot 21: 314-180633000-0000300 (\$253.44 for 2022)



**SMALLTOWN**  
HUNTING PROPERTIES  
& REAL ESTATE<sup>SM</sup>

**FORD TRUE**

LAND SPECIALIST

C: 662-645-1119

O: 662-846-1425

[ford@smalltownproperties.com](mailto:ford@smalltownproperties.com)

701 W. Sunflower Rd - Cleveland, MS 38732

[smalltownproperties.com](http://smalltownproperties.com)

Information is believed to be accurate but not guaranteed.





OPPORTUNITY AWAITS within the city limits of Clarksdale in Coahoma County, MS! Five vacant lots ranging in size from 0.6± acres to 1.2± acres are available for purchase. Four of the lots are zoned C-4 and one is zoned R-10. Ample frontage along Martin Luther King Jr. Blvd. and Medical Drive provides great access and exposure for potential new businesses or developments. Situated three tenths of a mile from the intersection of Hwy 6 and State Street, just one mile from Hwy 61 and only two miles from downtown Clarksdale, these lots are in a fantastic location! Zoning is based off the current Clarksdale Zoning Map but should be verified. The possibilities are endless...call Ford True for more information today.



**SMALLTOWN**  
HUNTING PROPERTIES  
& REAL ESTATE<sup>SM</sup>

**FORD TRUE**

LAND SPECIALIST

C: 662-645-1119

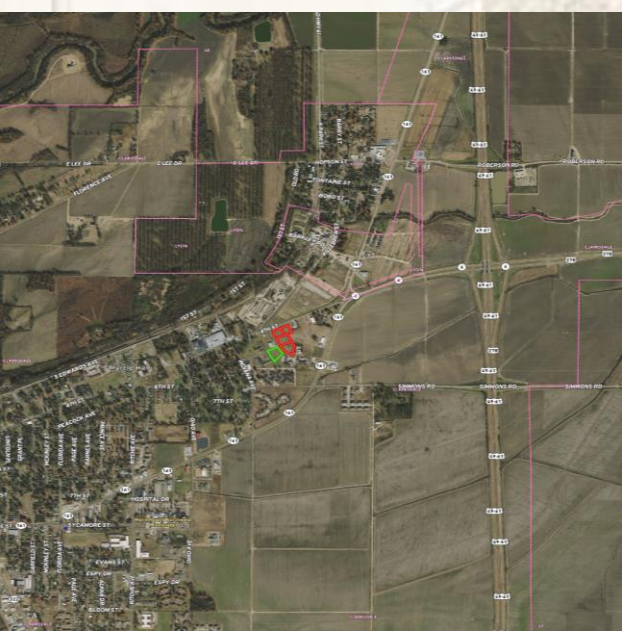
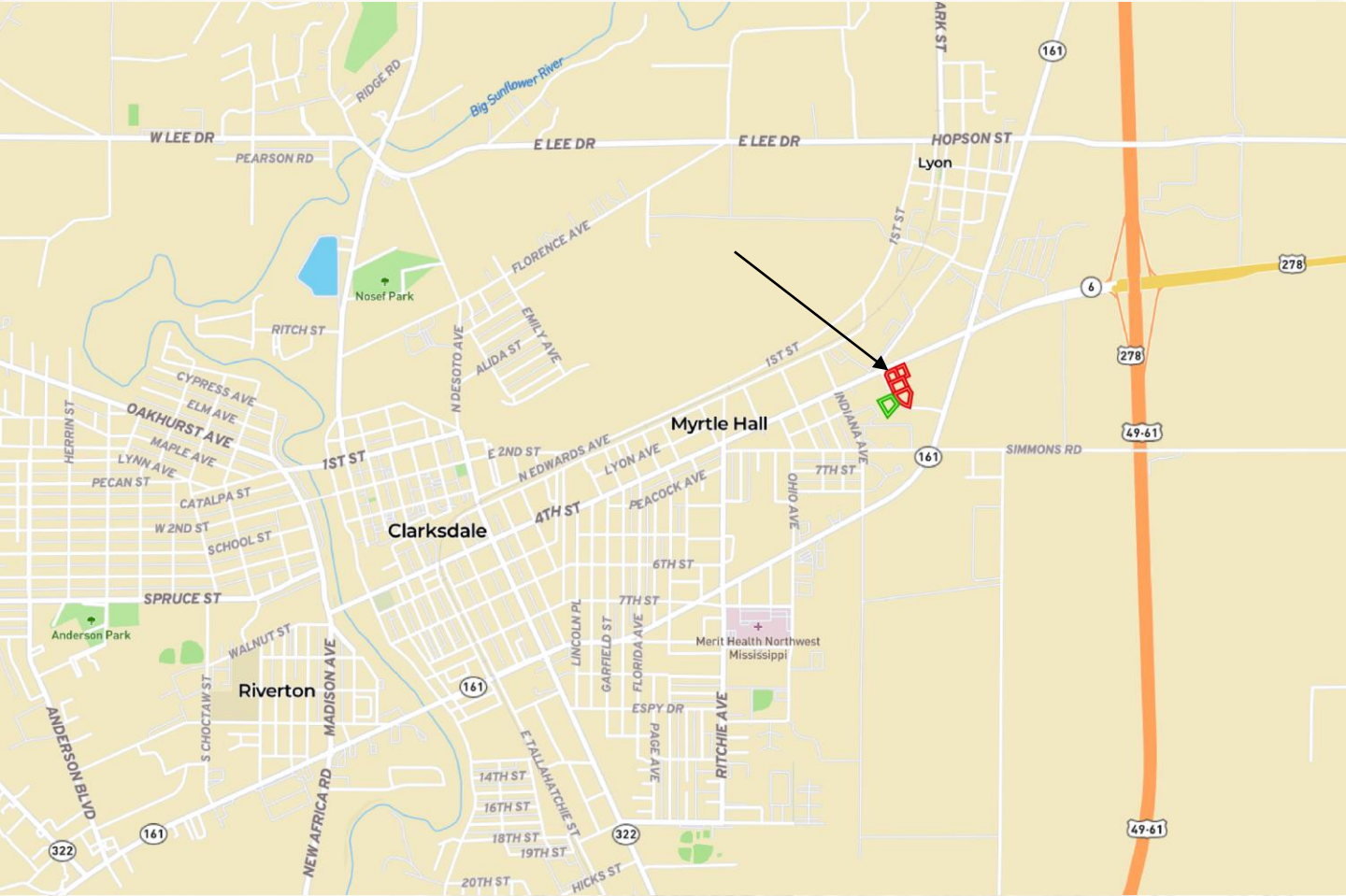
O: 662-846-1425

[ford@smalltownproperties.com](mailto:ford@smalltownproperties.com)

701 W. Sunflower Rd - Cleveland, MS 38732

[smalltownproperties.com](http://smalltownproperties.com)

Information is believed to be accurate but not guaranteed.



[MapRight Link](#)

[Google Map Link](#)

- Located in the Clarksdale City Limits
- Fronts Martin Luther King Jr. Blvd. and Medical Drive
- 5 Lots Available
- 1 Lot Zoned R-10
- 4 Lots Zoned C-4



**SMALLTOWN**  
HUNTING PROPERTIES  
& REAL ESTATE<sup>SM</sup>

**FORD TRUE**

LAND SPECIALIST

C: 662-645-1119

O: 662-846-1425

[ford@smalltownproperties.com](mailto:ford@smalltownproperties.com)

701 W. Sunflower Rd - Cleveland, MS 38732

[smalltownproperties.com](http://smalltownproperties.com)

Information is believed to be accurate but not guaranteed.

