

# Colonial Trading Path / Shiloh Road Interchange

### LEGEND

	BUILDINGS
	EXISTING RIGHT OF WAY
	PROPOSED RIGHT OF WAY
	PROPOSED EASEMENTS (EASEMENTS, UTILITY AND CONDUIT LOCATIONS)
	EXISTING ROADWAY
	EXISTING ROADWAY TO BE RESURFACED
	EXISTING ROADWAY TO BE REMOVED
	PROPOSED ROADWAY
	PROPOSED STRUCTURES, SIDEWALK, CURB AND GUTTER TO BE RETAINED
	EXISTING STRUCTURES, ISLAND, SIDEWALK, CURB AND GUTTER TO BE REMOVED
	LAKE, RIVER, STREAM AND PONDS
	EXISTING EASEMENTS
	PROPOSED DETOUR
	WETLANDS
	PROPOSED RIGHT OF WAY
	PROPOSED FULL CONTROL OF ACCESS
	PROPERTY LINES
	PROPOSED TRAFFIC SIGNAL
	EXISTING TRAFFIC SIGNAL
	PROPOSED TRAFFIC SIGNAL

**PUBLIC MEETING MAP**  
 TYP PROJECT No. BE-4004  
**RANDOLPH COUNTY**  
 US-421  
 FROM SOUTH OF NC-421  
 TO NORTH OF SR 2403 (OLD SHILOH ROAD)  
 MAP 1 OF 4  
 AUGUST 2012

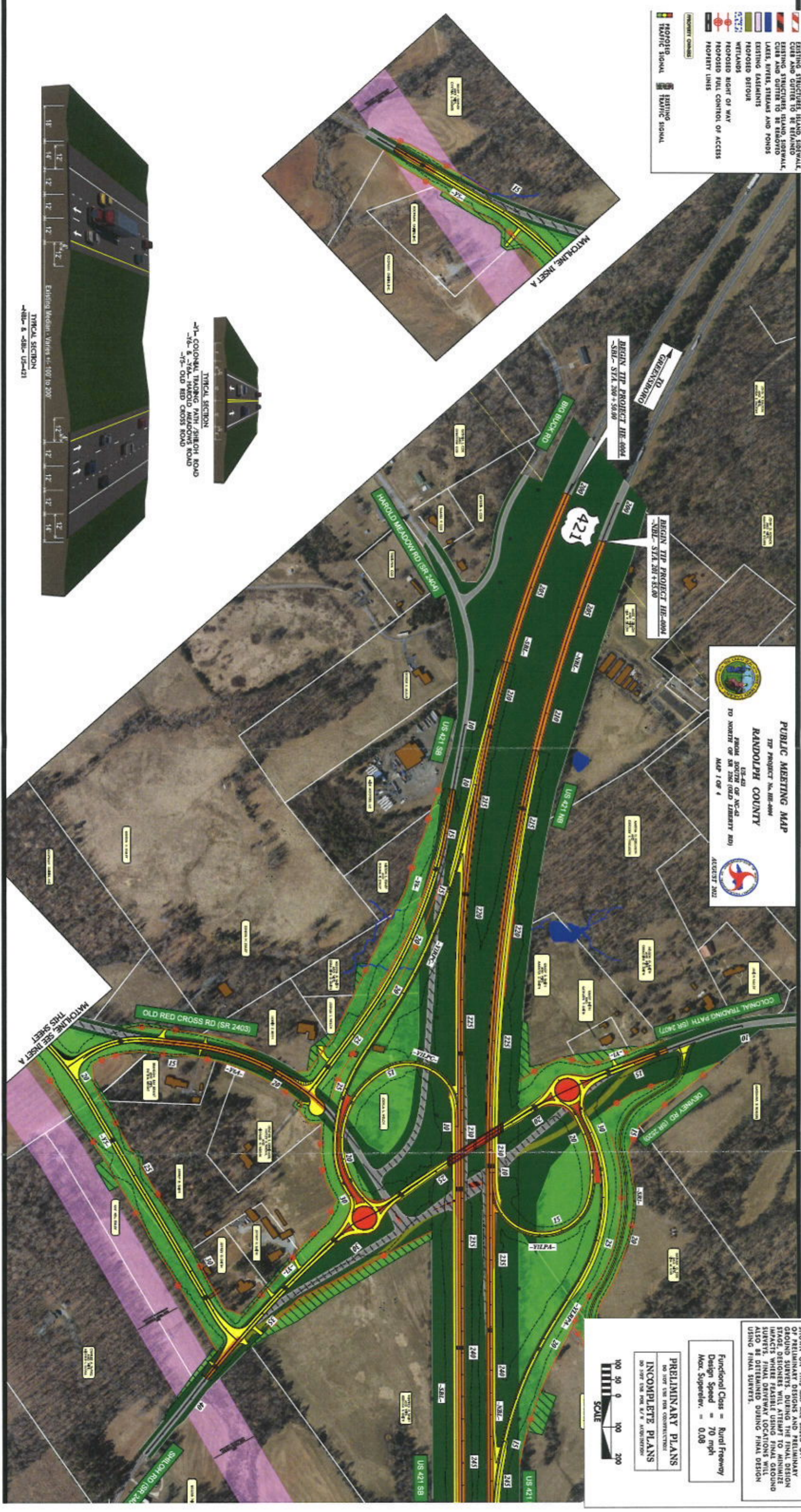
**UTILITY INFORMATION**  
 TO PROVIDE GREATER VISUAL CLARITY, EXISTING AND PROPOSED UTILITIES ARE NOT SHOWN ON THESE MAPS. COORDINATION WITH THE MAAS IS LIMITED TO LOCATIONS OF MAJOR EXISTING AND POTENTIAL UTILITY EASEMENTS. THE DESIGNS SHOWN ON THESE MAPS, INCLUDING UTILITY EASEMENTS, ARE PRELIMINARY AND ARE SUBJECT TO CHANGE.

**IMPACTS AND DRIVEWAY TIES**  
 LIMITS OF CONSTRUCTION AND THEIR IMPACTS SHOWN ON THIS MAP ARE BASED OFF OF PRELIMINARY DESIGN AND FIELD DESIGN STAGE DESIGNER WILL ATTEMPT TO MINIMIZE IMPACTS. FINAL DRIVEWAY LOCATIONS WILL ALSO BE DETERMINED DURING FINAL DESIGN USING FINAL SURVEYS.

**FUNCTIONAL CLASS = Rural Freeway**  
**Design Speed = 70 mph**  
**Max. Superelev. = 0.08**

**PRELIMINARY PLANS**  
 DO NOT USE FOR CONSTRUCTION  
**INCOMPLETE PLANS**  
 DO NOT USE FOR Bidding

**SCALE**  
 1" = 200'



**UTILITY INFORMATION**

TO PROVIDE GREATER VISUAL CLARITY, EXISTING AND PROPOSED UTILITIES ARE NOT SHOWN ON THESE MAPS OR ON OTHER DISPLAYS. THE UTILITY INFORMATION SHOWN ON THESE MAPS IS LIMITED TO LOCATIONS OF MAJOR EXISTING ABOVE GROUND UTILITIES. EXISTING UTILITIES SHOWN ON THESE MAPS INCLUDE: TELEPHONE EASEMENTS, ARE PRELIMINARY AND ARE SUBJECT TO CHANGE.

**IMPACTS AND DRIVEWAY TIES**

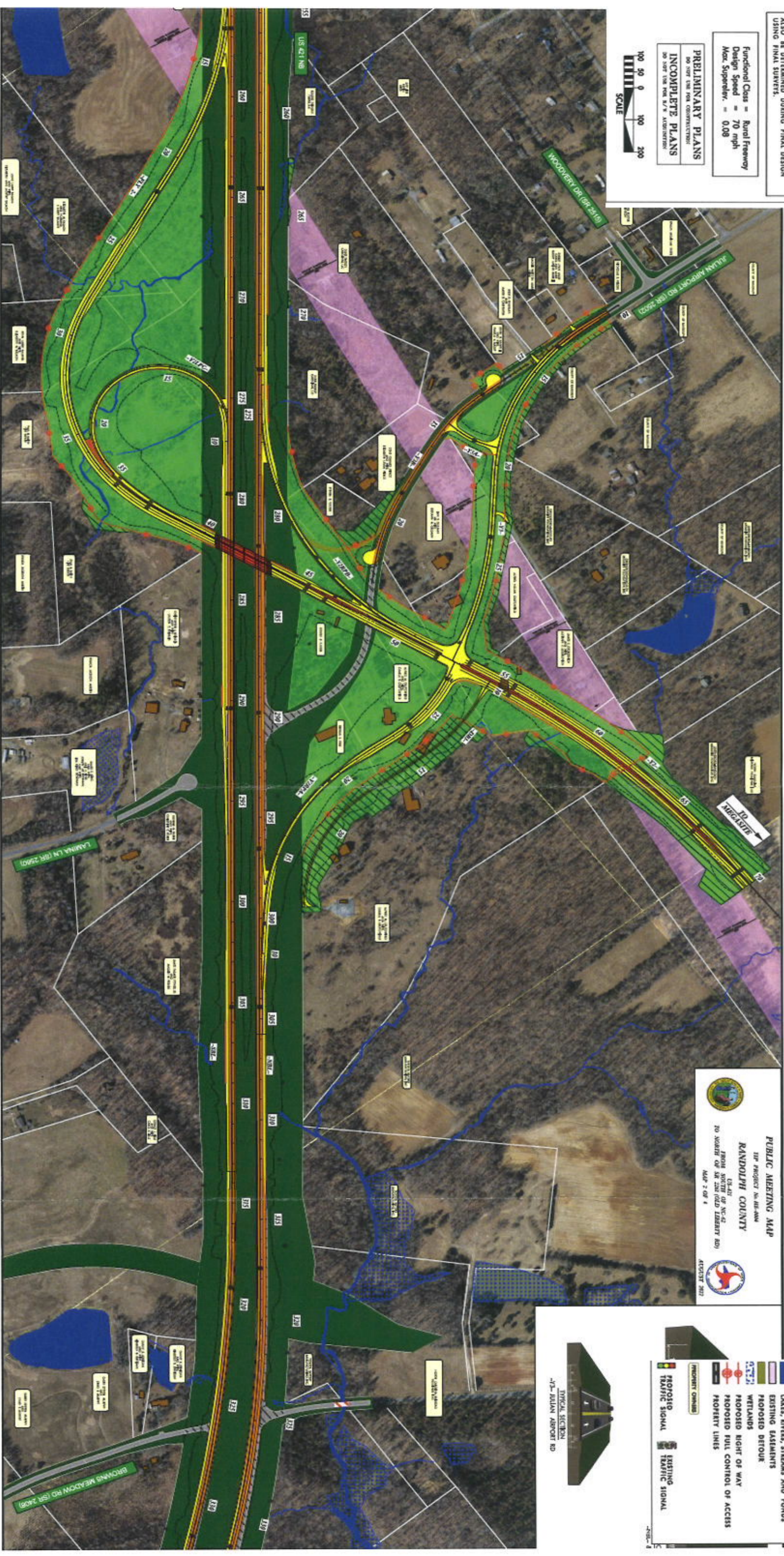
LIMITS OF CONSTRUCTION AND THEIR IMPACTS SHOWN ON THIS MAP ARE BASED OFF OF PRELIMINARY DESIGNS AND PRELIMINARY GROUND SURVEYS. DURING THE FINAL DESIGN STAGE, DESIGNERS WILL ATTEMPT TO MINIMIZE IMPACTS WHERE POSSIBLE. LOCATION AND SCOPE OF DRIVEWAY TIES, EASEMENTS, AND DRIVEWAYS ALSO BE DETERMINED DURING FINAL DESIGN USING FINAL SURVEYS.

Functional Class = Rural Freeway  
 Design Speed = 70 mph  
 Max. Superlev. = 0.08

**PRELIMINARY PLANS**  
 SO NOT FOR CONSTRUCTION  
**INCOMPLETE PLANS**  
 DO NOT FOR THE R.P.'S ALTERNATIVE



Map 2  
 Julian Airport Road Interchange



**PUBLIC MEETING MAP**  
 SR PROJECT No. 44-AM  
 RANDOLPH COUNTY  
 DISTRICT OF N.C.  
 TO NORTH OF SR 328 (OLD LIBERTY RD)  
 MAP 2 OF 4  
 PROJECT NO. 44-AM

- LEGEND**
- BUILDINGS
  - EXISTING RIGHT OF WAY
  - PROPOSED RIGHT OF WAY
  - PROPOSED EASEMENTS (EASEMENT, UTILITIES AND CONSTRUCTION)
  - EXISTING ROADWAY
  - EXISTING ROADWAY TO BE REMOVED
  - EXISTING ROADWAY TO BE RESURFACED
  - PROPOSED ROADWAY
  - PROPOSED STRUCTURES, SIDEWALK, ISLAND, CURB AND GUTTER
  - EXISTING STRUCTURES, ISLAND, SIDEWALK, CURB AND GUTTER TO BE RETAINED
  - EXISTING STRUCTURES, ISLAND, SIDEWALK, CURB AND GUTTER TO BE REMOVED
  - LAKES, RIVERS, STREAMS AND PONDS
  - EXISTING EASEMENTS
  - PROPOSED DETOUR
  - WETLANDS
  - PROPOSED RIGHT OF WAY
  - PROPOSED FULL CONTROL OF ACCESS
  - PROPERTY LINES
  - EXISTING SIGNAL
  - PROPOSED TRAFFIC SIGNAL
  - EXISTING TRAFFIC SIGNAL
  - EXISTING CHIMNEY



**UTILITY INFORMATION**

TO PROVE GREATER VISUAL CLARITY, EXISTING AND PROPOSED UTILITIES ARE NOT SHOWN ON THESE MAPS OR ON OTHER DISPLAYS. THE UTILITY INFORMATION SHOWN ON THESE MAPS IS LIMITED TO LOCATIONS OF MAJOR EXISTING AND POTENTIAL UTILITY EASEMENTS. THE DESIGNS SHOWN ON THESE MAPS, INCLUDING UTILITY EASEMENTS, ARE PRELIMINARY AND ARE SUBJECT TO CHANGE.

**IMPACTS AND DRIVEWAY TIES**

LIMITS OF CONSTRUCTION AND THEIR IMPACTS SHOWN ON THIS MAP ARE BASED ON THE PRELIMINARY DESIGN AND PRELIMINARY GROUND SURVEYS. DURING THE FINAL DESIGN STAGE, DESIGNERS WILL ATTEMPT TO MINIMIZE IMPACTS WHERE FEASIBLE USING FINAL GROUND SURVEYS. FINAL DRIVEWAY LOCATIONS WILL ALSO BE DETERMINED DURING FINAL DESIGN USING FINAL SURVEYS.

Functional Class = Rural Freeway  
 Design Speed = 70 mph  
 Max. Superelev. = 0.08

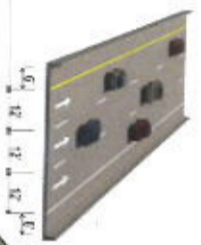
**PRELIMINARY PLANS**  
 90' OVER USE FOR CONSTRUCTION  
**INCOMPLETE PLANS**  
 90' OVER USE FOR 3/4" ADJUSTMENT



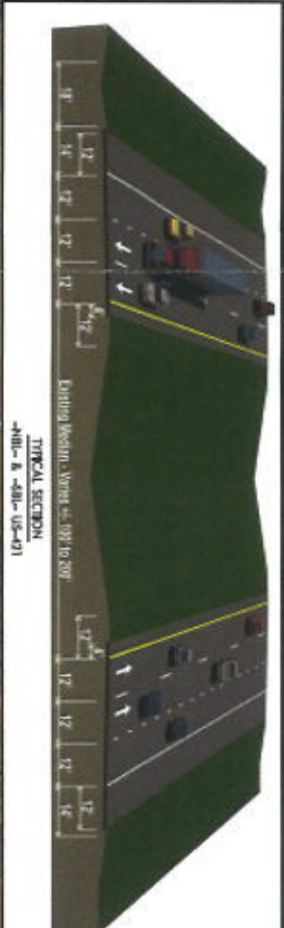
# Map 3

## Julian Airport Road Interchange

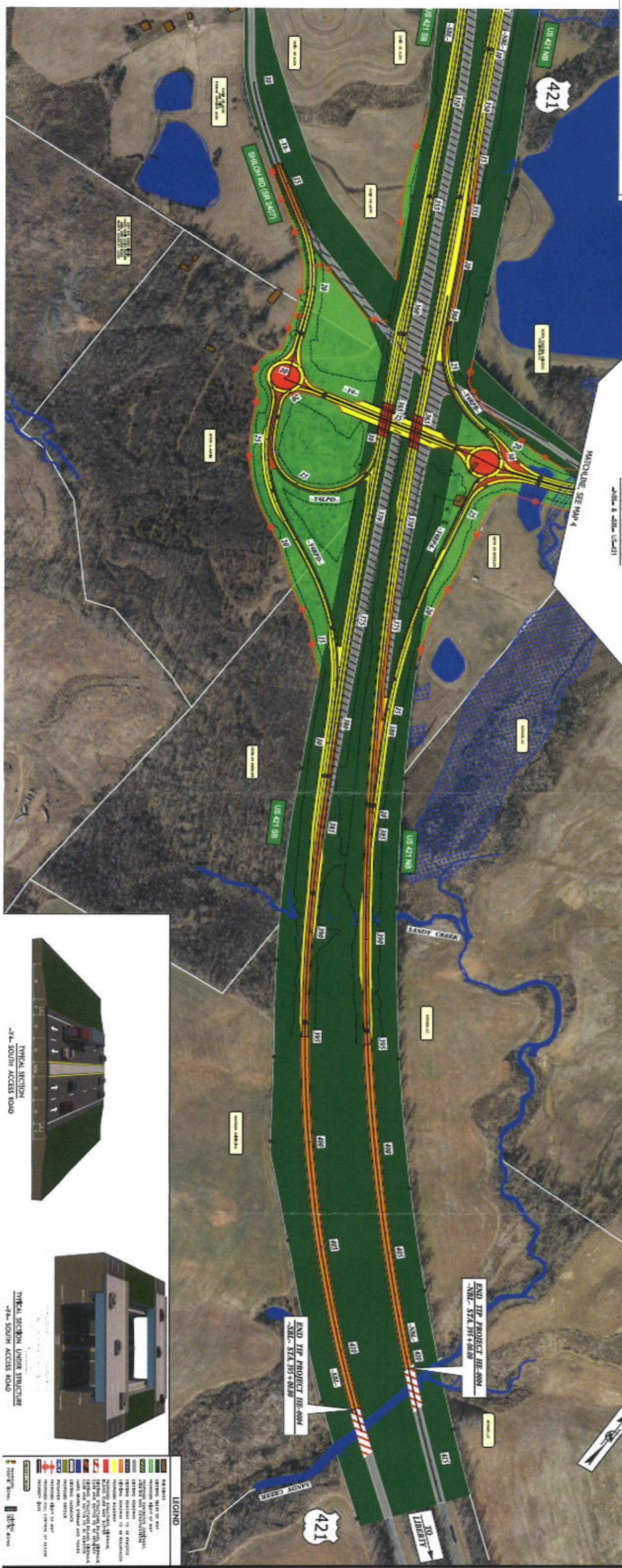
**PUBLIC MEETING MAP**  
 TIP PROJECT No. 08-004  
**RANDOLPH COUNTY**  
 US-421  
 FROM SOUTH OF NC-14  
 TO NORTH OF SR 226 FOLD LIBERTY RD.  
 MAP 3 OF 4  
 AUGUST 2011



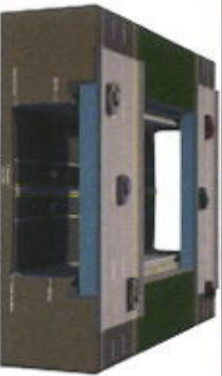
STRUCTURE TYPICAL SECTION  
 -NBI- & -SBI- (S-01)



TYPICAL SECTION  
 -NBI- & -SBI- (S-01)



TYPICAL SECTION  
 -74- SOUTH ACCESS ROAD



TYPICAL SECTION UNDER STRUCTURE  
 -74- SOUTH ACCESS ROAD

**LEGEND**

[Symbol]	Right-of-Way
[Symbol]	Structure
[Symbol]	Proposed
[Symbol]	Existing
[Symbol]	Utility
[Symbol]	Water
[Symbol]	Other

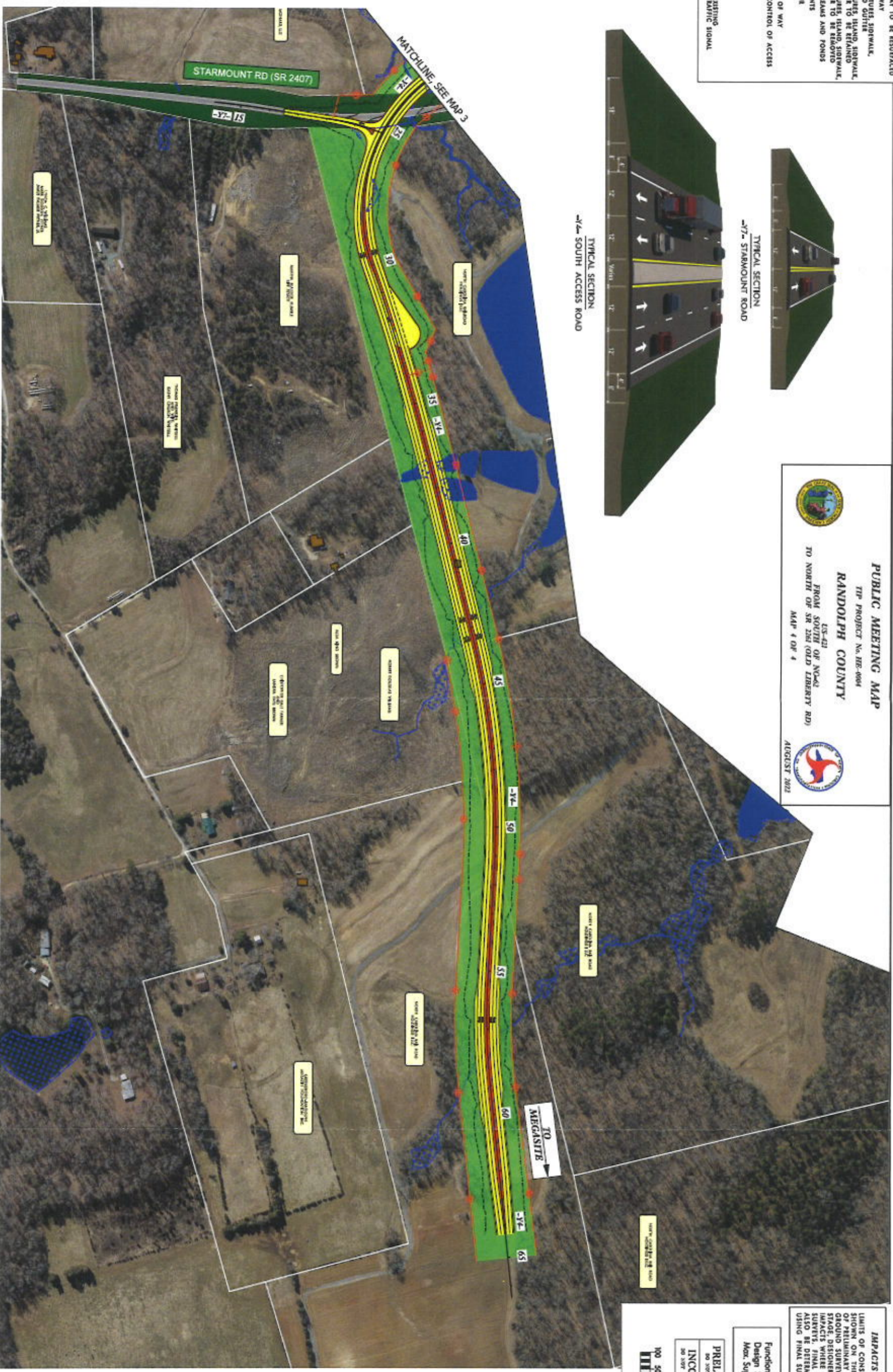
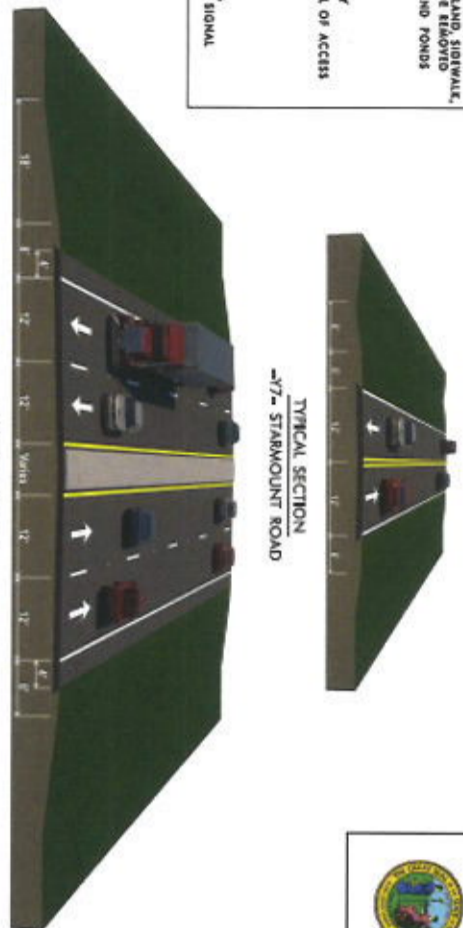
**LEGEND**

- BUILDINGS
- EXISTING RIGHT OF WAY
- PROPOSED RIGHT OF WAY
- PROPOSED EASEMENTS (DRAINAGE, UTILITIES AND CONSTRUCTION)
- EXISTING ROADWAY
- EXISTING ROADWAY TO BE REMOVED
- PROPOSED ROADWAY
- PROPOSED STRUCTURES, SIDEWALK, ISLAND, CURB AND GUTTER
- EXISTING STRUCTURES ISLAND, SIDEWALK, CURB AND GUTTER TO BE REMOVED
- EXISTING STRUCTURES ISLAND, SIDEWALK, CURB AND GUTTER TO BE REMOVED
- LAKES, BIRDS, STREAMS AND PONDS
- EXISTING EASEMENTS
- PROPOSED DETOUR
- WETLANDS
- PROPOSED RIGHT OF WAY
- PROPOSED FULL CONTROL OF ACCESS
- PROPERTY LINES
- (PROPERTY OWNERS)
- EXISTING SIGNAL
- EXISTING SIGNAL

**Map**

**Julian Airport Road Interchange**

**PUBLIC MEETING MAP**  
 TYP PROJECT No. IIR-0004  
**RANDOLPH COUNTY**  
 US-421  
 FROM SOUTH OF N-642  
 TO NORTH OF SR 256 (OLD LIBERTY RD)  
 MAP 4 OF 4  
 AUGUST 2022



**UTILITY INFORMATION**  
 TO PROVIDE GREATER VISUAL CLARITY, EXISTING AND PROPOSED UTILITIES ARE NOT SHOWN ON THESE MAPS OR ON OTHER DISPLAYS. THE UTILITY INFORMATION SHOWN ON THESE MAPS IS FOR INFORMATIONAL PURPOSES ONLY. EXISTING AND POTENTIAL UTILITY EASEMENTS THE DESIGN SHOWN ON THESE MAPS, INCLUDING THE UTILITY EASEMENTS, ARE PRELIMINARY AND ARE SUBJECT TO CHANGE.

**IMPACTS AND DRIVEWAY TIES**  
 LIMITS OF CONSTRUCTION AND THEIR IMPACTS SHOWN ON THIS MAP ARE BASED OFF OF PRELIMINARY DESIGN AND PRELIMINARY GROUND SURVEYS. DURING THE FINAL DESIGN PHASE, DESIGNER WILL ATTEMPT TO MINIMIZE IMPACTS. DRIVEWAY TIES WILL BE DETERMINED DURING FINAL DESIGN AND WILL ALSO BE DETERMINED DURING FINAL DESIGN USING FINAL SURVEYS.

Functional Class = Rural Freeway  
 Design Speed = 70 mph  
 Max. Superlev. = 0.08

**PRELIMINARY PLANS**  
 DO NOT USE FOR CONSTRUCTION  
 INCOMPLETE PLANS  
 20 2022 FOR THE YEAR 2022

