

**100.68± Acres in Rankin County, MS**  
**\$400,000**



**SMALLTOWN**  
HUNTING PROPERTIES  
& REAL ESTATE™

**Office 769.888.2522**





# Property Profile

## The Strong River 100.68

### Location:

- Rankin County, MS
- Access off Highway 541 by Deeded Easement
- 3.8± Miles Southeast of Puckett
- 20± Miles Southeast from Brandon

### Coordinates:

- 32.05245321545339, -89.74721542549105

### Property Information:

- 100.68± Acres
- Strong River Frontage
- Established Food Plot
- Hardwood Timber
- Merchantable Pine Timber
- Tupelo Gum Sloughs
- Electricity & Water at the Road

### Property Use:

- Potential Home/Cabin Site
- Recreational
- Investment
- Small Game, Deer, Duck, and Turkey Hunting

### Tax Information: 2022 \$371.41

- Parcel #: Q01-000002-00020
- Parcel #: Q01-000002-00010
- Parcel #: Q01-000002-00021
- Part of Parcel #: P01-000033-00000



**SMALLTOWN**  
HUNTING PROPERTIES  
& REAL ESTATE<sup>SM</sup>

**JIMMY GENTRY**

LAND SPECIALIST

C: 601-421-8500

O: 769-888-2522

[jimmy@smalltownproperties.com](mailto:jimmy@smalltownproperties.com)

4848 Main St. - Flora, MS 39071

[smalltownproperties.com](http://smalltownproperties.com)

Information is believed to be accurate but not guaranteed.





# **SMALLTOWN**

**HUNTING PROPERTIES  
& REAL ESTATE<sup>SM</sup>**

**JIMMY GENTRY**  
*LAND SPECIALIST*

**C: 601-421-8500**

**O: 769-888-2522**

**[jimmy@smalltownproperties.com](mailto:jimmy@smalltownproperties.com)**

**4848 Main St. - Flora, MS 39071**

**[smalltownproperties.com](http://smalltownproperties.com)**

Information is believed to be accurate but not guaranteed.



The Strong River 100.68 offers the opportunity for deer, duck, and turkey! This secluded sportsman's paradise is accessed by a deeded easement situated just off Hwy 541 in Rankin County, MS and consists of 100.68± acres with frontage along the Strong River.



**SMALLTOWN**  
HUNTING PROPERTIES  
& REAL ESTATE<sup>SM</sup>

**JIMMY GENTRY**  
LAND SPECIALIST  
C: 601-421-8500  
O: 769-888-2522  
[jimmy@smalltownproperties.com](mailto:jimmy@smalltownproperties.com)

4848 Main St. - Flora, MS 39071

[smalltownproperties.com](http://smalltownproperties.com)

Information is believed to be accurate but not guaranteed.



If you have been waiting for a river bottom tract, this is it! You will be welcomed at the gate by 27± acres of tall merchantable pines providing many options to implement your own future wildlife management plans as well as an immediate return on your investment. Near the front of the property is a high hill that offers a potential home/cabin site, outside of the floodplain. The remaining 73± acres is **HARDWOOD BOTTOMLAND**. Mixed white and red oak trees are abundant throughout providing a wide variety of acorn options for wildlife. A power line traverses North to South offering an excellent food plot opportunity in addition to the existing one acre plot.



**SMALLTOWN**  
HUNTING PROPERTIES  
& REAL ESTATE<sup>SM</sup>

**JIMMY GENTRY**  
LAND SPECIALIST

C: 601-421-8500

O: 769-888-2522

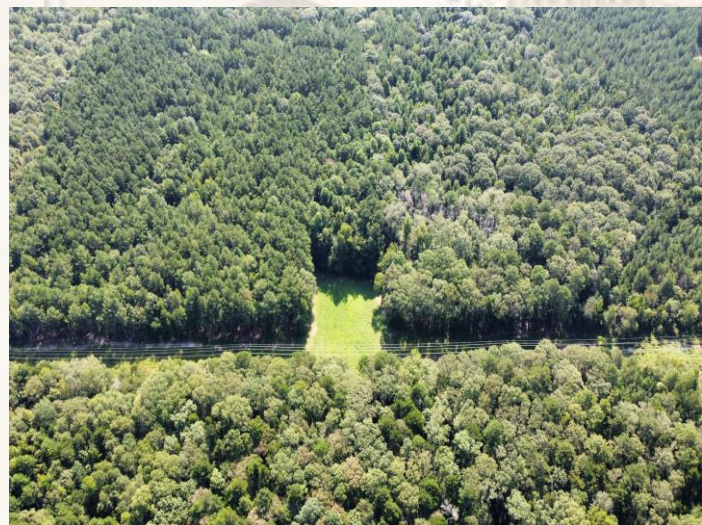
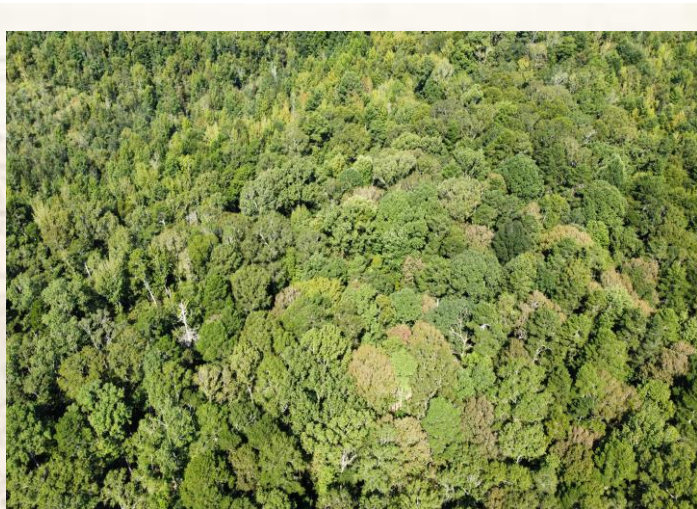
[jimmy@smalltownproperties.com](mailto:jimmy@smalltownproperties.com)

4848 Main St. - Flora, MS 39071

[smalltownproperties.com](http://smalltownproperties.com)

*Information is believed to be accurate but not guaranteed.*





# SMALLTOWN

HUNTING PROPERTIES  
& REAL ESTATE<sup>SM</sup>

**JIMMY GENTRY**

LAND SPECIALIST

C: 601-421-8500

O: 769-888-2522

[jimmy@smalltownproperties.com](mailto:jimmy@smalltownproperties.com)

4848 Main St. - Flora, MS 39071

[smalltownproperties.com](http://smalltownproperties.com)

*Information is believed to be accurate but not guaranteed.*





A scenic tupelo gum slough also courses through the property giving a “delta like” feel to the place.



**SMALLTOWN**  
HUNTING PROPERTIES  
& REAL ESTATE<sup>SM</sup>

**JIMMY GENTRY**  
*LAND SPECIALIST*

C: 601-421-8500

O: 769-888-2522

[jimmy@smalltownproperties.com](mailto:jimmy@smalltownproperties.com)

4848 Main St. - Flora, MS 39071

[smalltownproperties.com](http://smalltownproperties.com)

Information is believed to be accurate but not guaranteed.





The western corner of the property touches the Strong River giving the new owner access to the river. You can hang a bow stand this fall, climb in the shooting house this winter with a rifle, or throw on the waders and catch an early morning wood duck hunt. Grab your turkey vest and listen to the woods wake up with thunderous gobbles once spring rolls around. The Strong River 100.68 offers year-round enjoyment; call Jimmy Gentry today to schedule a tour! Owner/Agent.



**SMALLTOWN**  
HUNTING PROPERTIES  
& REAL ESTATE<sup>SM</sup>

**JIMMY GENTRY**  
LAND SPECIALIST

C: 601-421-8500

O: 769-888-2522

[jimmy@smalltownproperties.com](mailto:jimmy@smalltownproperties.com)

4848 Main St. - Flora, MS 39071

[smalltownproperties.com](http://smalltownproperties.com)

Information is believed to be accurate but not guaranteed.





# SMALLTOWN

HUNTING PROPERTIES  
& REAL ESTATE<sup>SM</sup>

**JIMMY GENTRY**  
LAND SPECIALIST

C: 601-421-8500

O: 769-888-2522

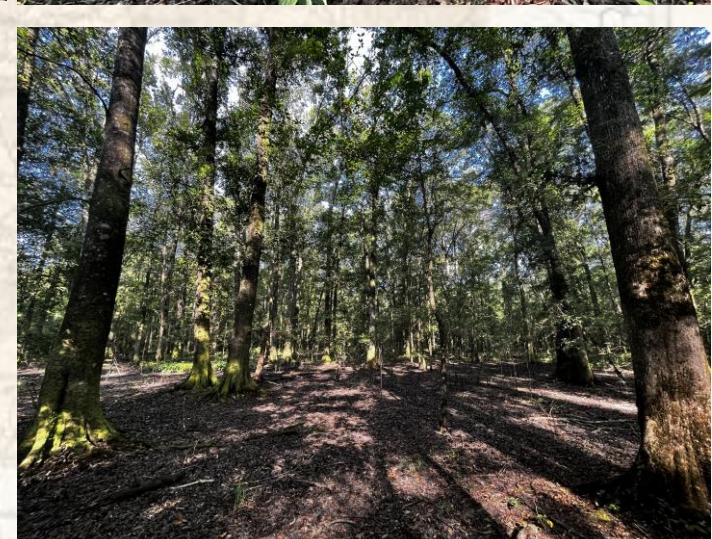
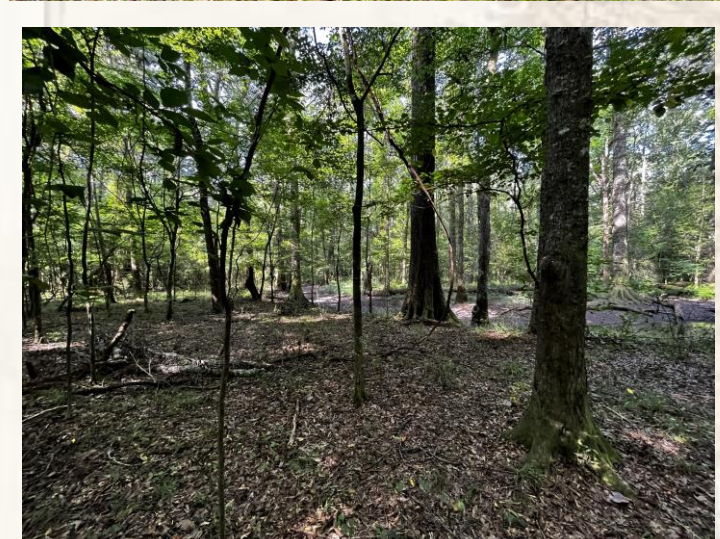
[jimmy@smalltownproperties.com](mailto:jimmy@smalltownproperties.com)

4848 Main St. - Flora, MS 39071

[smalltownproperties.com](http://smalltownproperties.com)

Information is believed to be accurate but not guaranteed.





# SMALLTOWN

HUNTING PROPERTIES  
& REAL ESTATE<sup>SM</sup>

**JIMMY GENTRY**  
LAND SPECIALIST

C: 601-421-8500

O: 769-888-2522

[jimmy@smalltownproperties.com](mailto:jimmy@smalltownproperties.com)

4848 Main St. - Flora, MS 39071

[smalltownproperties.com](http://smalltownproperties.com)

*Information is believed to be accurate but not guaranteed.*





**SMALLTOWN**  
HUNTING PROPERTIES  
& REAL ESTATE<sup>SM</sup>

**JIMMY GENTRY**  
LAND SPECIALIST

C: 601-421-8500

O: 769-888-2522

[jimmy@smalltownproperties.com](mailto:jimmy@smalltownproperties.com)

4848 Main St. - Flora, MS 39071

[smalltownproperties.com](http://smalltownproperties.com)

Information is believed to be accurate but not guaranteed.





# SMALLTOWN

HUNTING PROPERTIES  
& REAL ESTATE<sup>SM</sup>

**JIMMY GENTRY**

LAND SPECIALIST

C: 601-421-8500

O: 769-888-2522

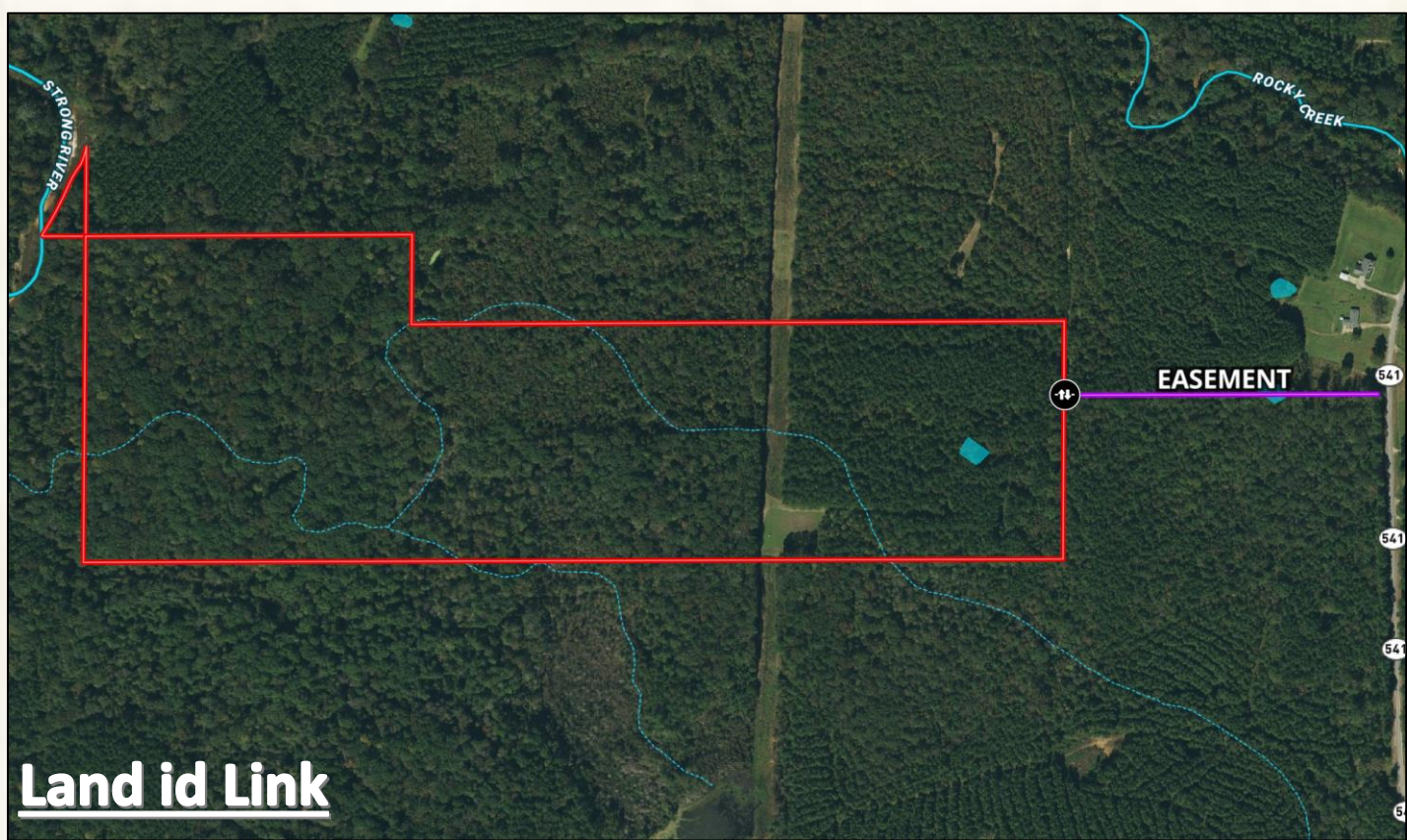
[jimmy@smalltownproperties.com](mailto:jimmy@smalltownproperties.com)

4848 Main St. - Flora, MS 39071

[smalltownproperties.com](http://smalltownproperties.com)

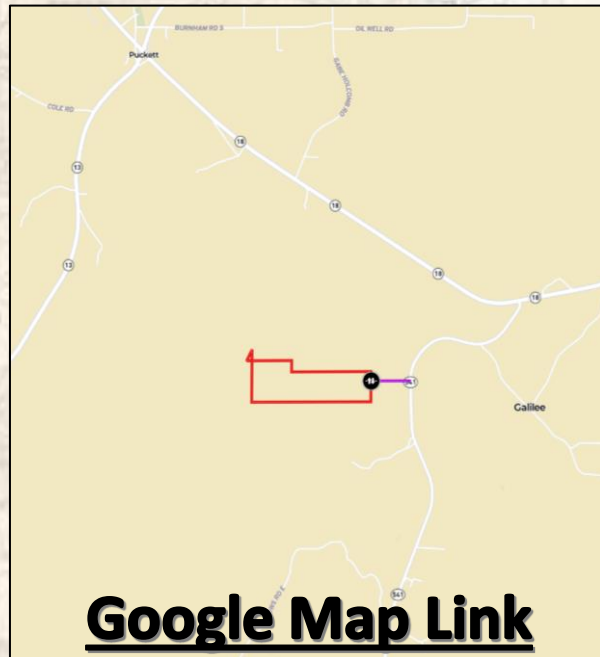
Information is believed to be accurate but not guaranteed.



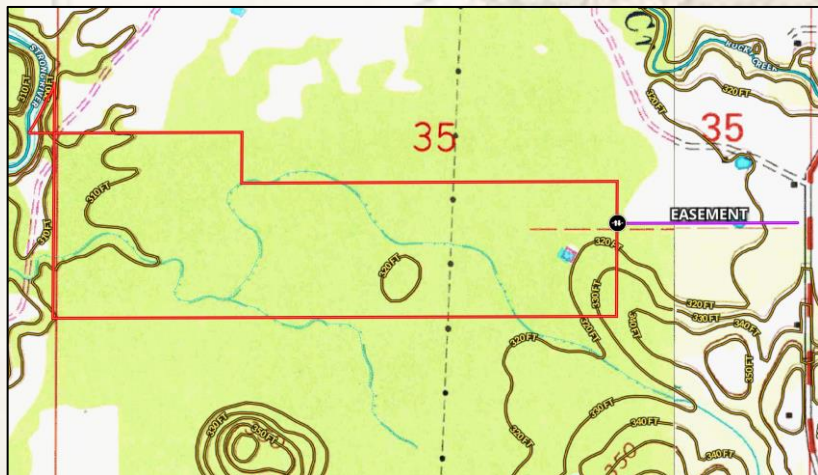


## Land id Link

- 3.8± Miles Southeast of Puckett
- 20± Miles Southeast from Brandon
- 100.68± Acres
- Strong River Frontage



## Google Map Link



**SMALLTOWN**  
HUNTING PROPERTIES  
& REAL ESTATE<sup>SM</sup>

**JIMMY GENTRY**  
LAND SPECIALIST

C: 601-421-8500

O: 769-888-2522

[jimmy@smalltownproperties.com](mailto:jimmy@smalltownproperties.com)

4848 Main St. - Flora, MS 39071

[smalltownproperties.com](http://smalltownproperties.com)

Information is believed to be accurate but not guaranteed.