

**ECHO LANE COMMERCIAL LAND**

**±16.18 ACRES - FOR SALE**

**EL DORADO COUNTY**

**PURCHASE PRICE: \$1,950,000**



**TRI** *Outdoor Properties*

LAND BROKERAGE | Recreational · Agricultural · Conservation

A Division of TRI Commercial Real Estate Services, Inc.

The information in this document was obtained from sources we deem reliable; however, no warranty or representation, expressed or implied, is made as to the accuracy of the information contained herein.

# Property Photos ~ Echo Lane Commercial Land, El Dorado County, CA



# Property Info ~ Echo Lane Commercial Land, El Dorado County, CA

Address: Echo Lane Just off Highway 50 at the El Dorado Road Exit near Placerville, CA 95667

APN: 327-090-001

Zoning: Commercial Regional (CR) which allows for large scale commercial development.

Elevation: Approximately 1,500 to 1,600 feet.

Latitude: 38.704639 degrees

Longitude: -120.858785 degrees

MLS #: 223081925

Acres: **±16.18 Acres**

Price: **\$1,950,000**

Improvements: Power to site

Terms: Cash or submit.

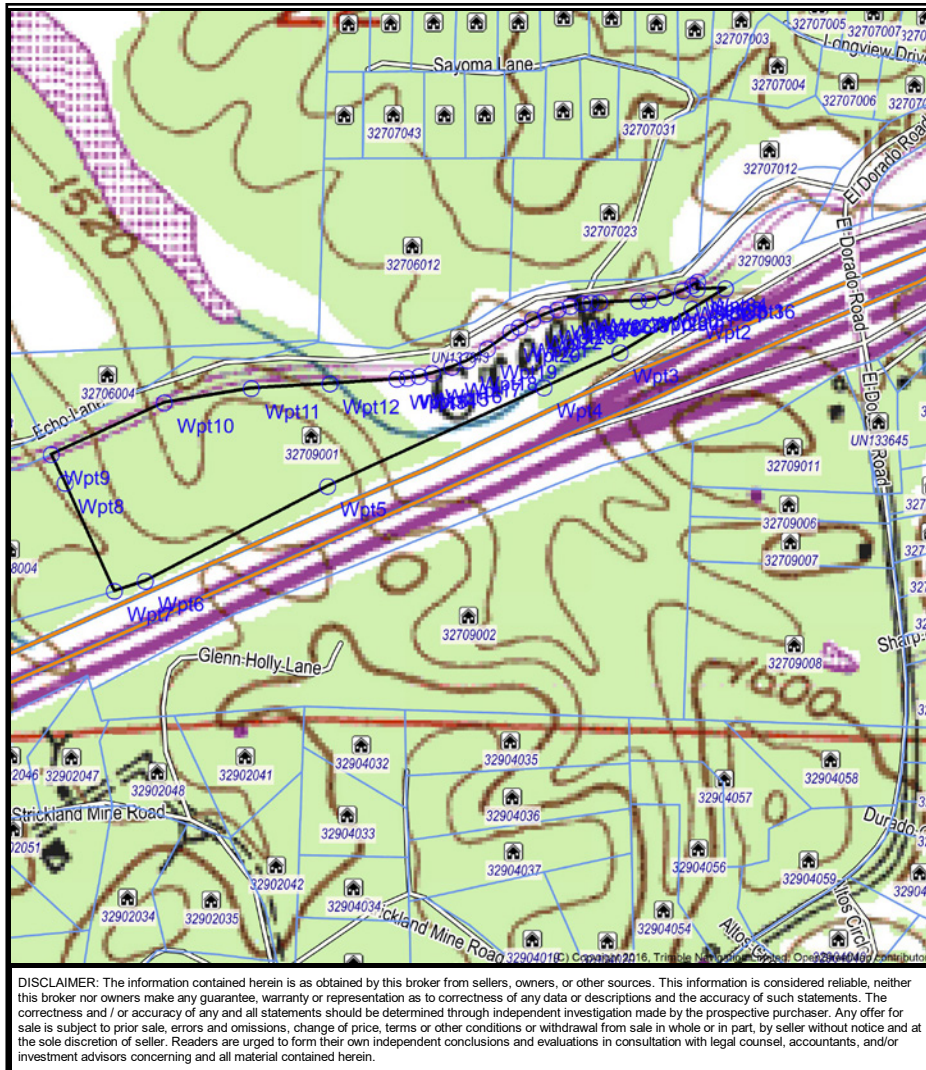


Description: 16.18 acres of Highway 50 frontage commercially zoned property with full interchange off of El Dorado Road on Echo Lane just west of Placerville. This property is already zoned Commercial Regional which allows for large scale commercial shopping center development. A seasonal stream cuts through part of the property adding to its beauty. Very few sites available in this area for development. Just east of Red Hawk Casino.

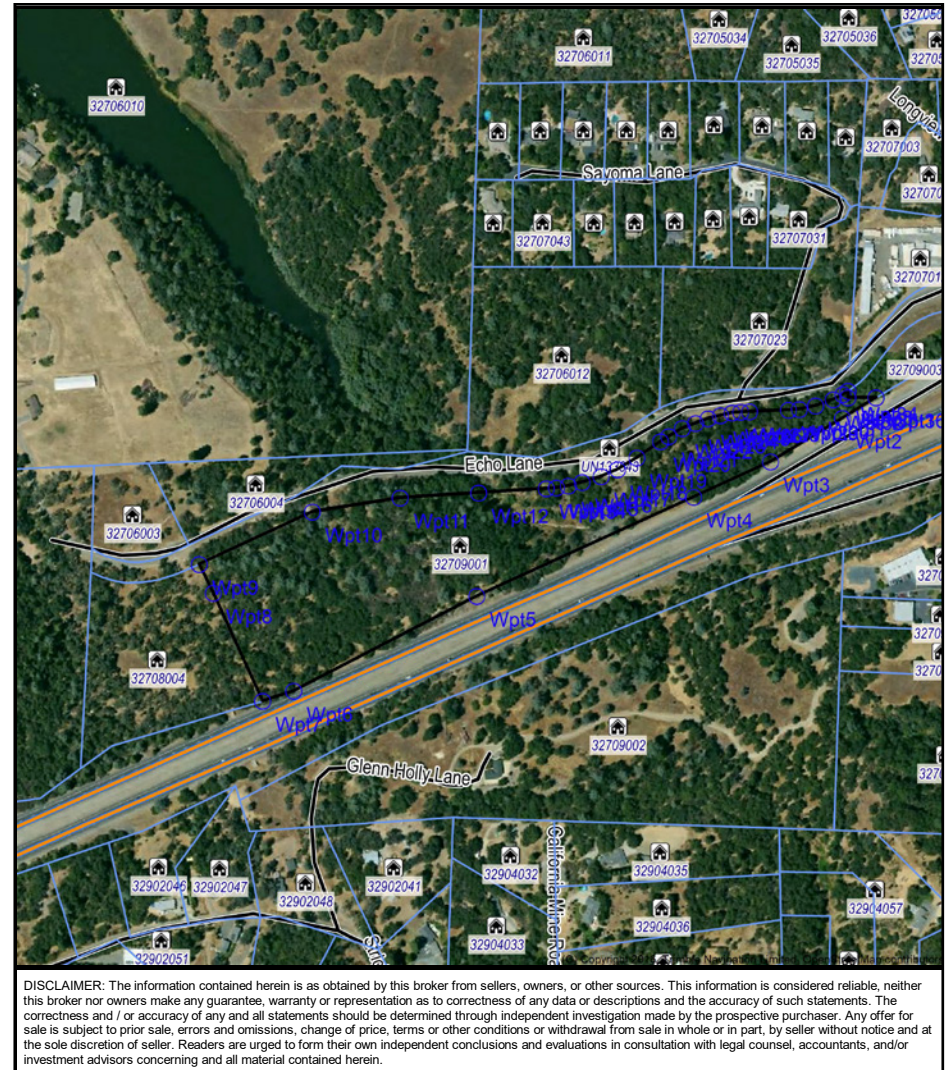
Directions: From Highway 50 go to El Dorado exit just west of Placerville. Go to north side of Highway 50 and take first left or west on Echo Lane. Property is 2nd parcel on left between Echo Lane and Highway 50.

# Property Maps ~ Echo Lane Commercial Land, El Dorado County, CA

## Topo Map

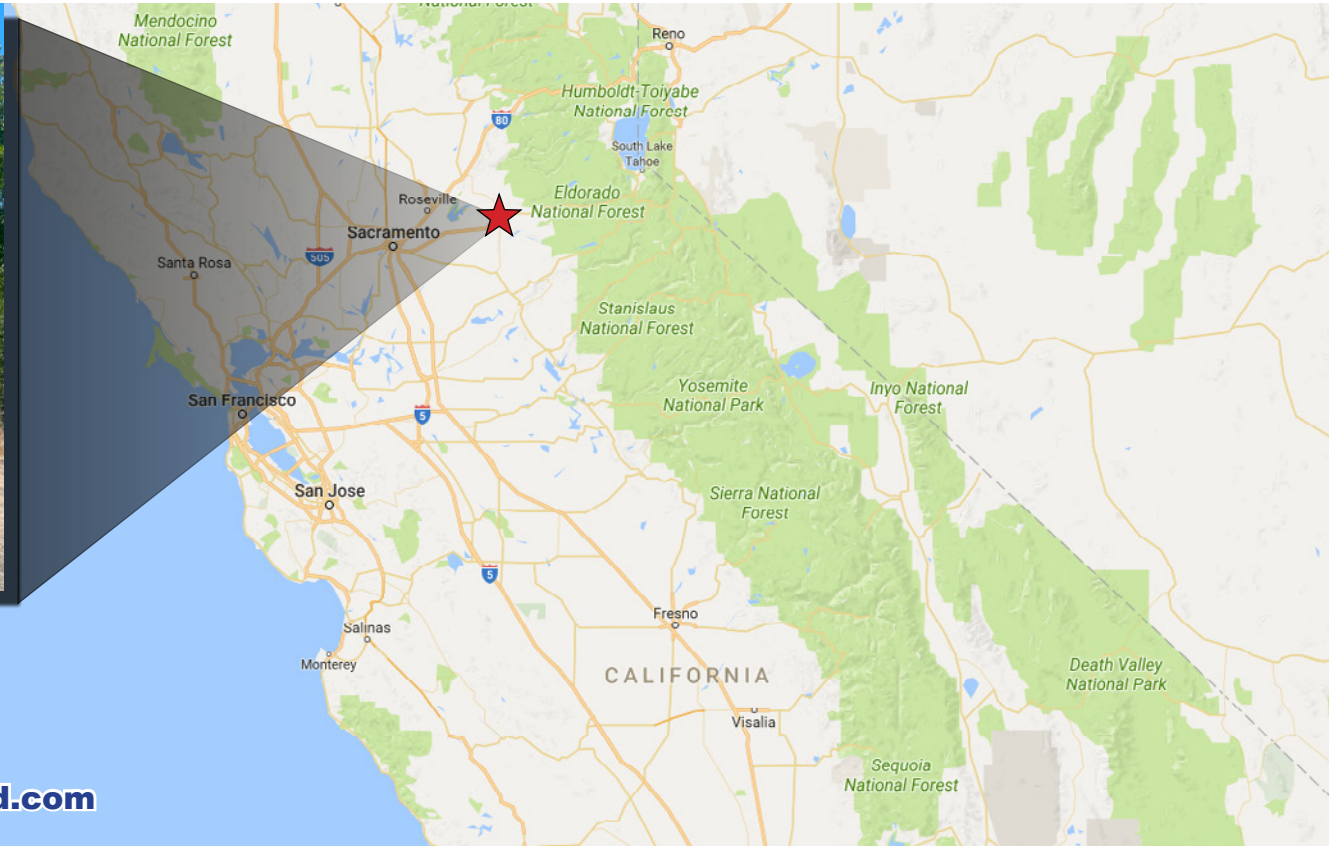


## Aerial Map





# Property Summary ~ Echo Lane Commercial Land, El Dorado County, CA



**For Sale: ±16.18 AC  
\$1,950,000**

**For Additional information visit [www.Land.com](http://www.Land.com)**

For More Information Contact:



**Mike Kuppenbender, ALC, CCIM, SIOR**  
DRE License #: 00811112  
mkupp@tricommercial.com  
916.960.5709

**TRI Outdoor Properties**

532 Gibson Drive, Suite 200, Roseville, CA 95678

LAND BROKERAGE | Recreational · Agricultural · Conservation

A Division of TRI Commercial Real Estate Services, Inc.

The information in this document was obtained from sources we deem reliable; however, no warranty or representation, expressed or implied, is made as to the accuracy of the information contained herein.