



# AGRICOLA ACREAGE AND HOMESITE

AGRICOLA MINE RD  
FORT MEADE, FL 33841

---

Daniel Lanier  
863.698.2971  
daniel.lanier@svn.com

# Property Overview



**Sale Price** **\$239,000**

## OFFERING SUMMARY

**Acreage:** **19.05 Acres**  
Price / Acre: \$12,546  
City: Fort Meade  
County: Polk  
Property Type: Land: Ranch, Waterfront

## PROPERTY OVERVIEW

Agricola Acreage and Homesite is a great property to be able to have a secluded rural homesite or ranchette while being just a few minutes away from what Bartow, Fort Meade, and Lakeland have to offer. This quiet area is full of game such as deer, turkey, and hogs, and is surrounded by large landowners that will probably stay undeveloped for many years to come. It is easily accessed with its 1,960 ± feet of frontage on Agricola Road. With the small pond in the center of the property and the rolling hills, this property has so many possibilities.

# Specifications & Features



## SPECIFICATIONS & FEATURES

Land Types:

- Hunting & Recreation Properties
- Ranch
- Waterfront

Uplands / Wetlands:

12.4 acres of uplands

Lake Frontage / Water Features:

Small pond in the center of the property.

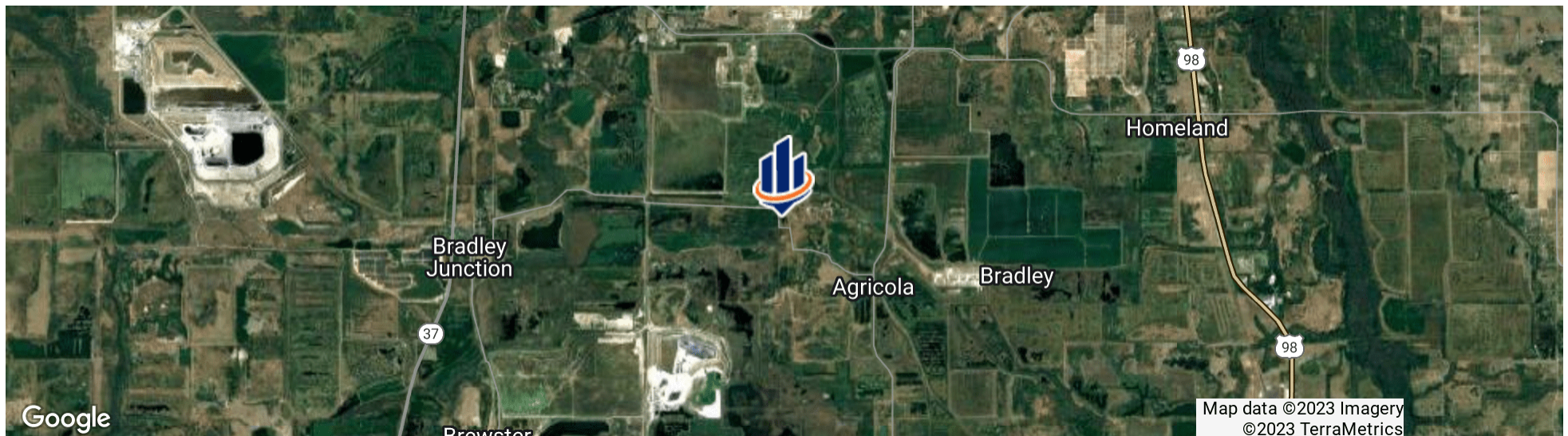
Road Frontage:

1,960 feet of frontage on Agricola Road



## LOCATION & DRIVING DIRECTIONS

- Parcel: 24-31-09-000000-012030
- GPS: 27.7998675, -81.9106682
- Driving Directions:
- Travel west from Fort Meade 5.5 miles to CR555
  - Turn north on CR555 for 2.9 miles and then turn west on Agricola Road
  - Travel west for 1.5 miles on Agricola Road



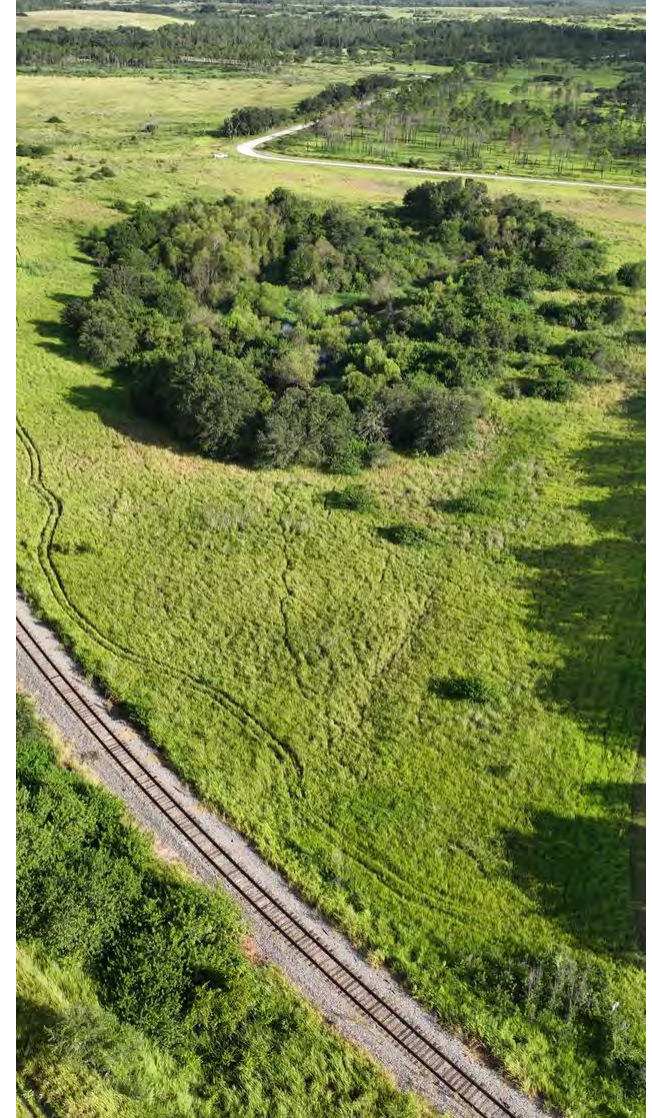
# Wetlands Map



# Soils Map



# Additional Photos





## POLK COUNTY FLORIDA

Founded	1861	Density	386.5 [2019]
County Seat	Bartow	Population	787,404 [2022]
Area	1,875 sq. mi.	Website	polk-county.net

In Florida, Polk County is a leading contributor to the state's economy and politics. Concerning the local economy, industries like citrus, cattle, agriculture, and phosphate have all played extremely vital roles in Polk County. An increase in tourist revenue has also significantly contributed to the county's economic growth in recent years. As the heart of Central Florida, Polk County's location between the Tampa and Orlando Metropolitan Areas has aided in the development and growth of the area. Residents and visitors alike are drawn to the unique character of the county's numerous heritage sites, cultural venues, stunning natural landscapes, and plentiful outdoor activities.



# One of America's **BEST BROKERAGES**



One of America's  
Best Brokerages



**APEX Top  
National Producer**  
Dean Saunders,  
ALC, CCIM



**Most Influential  
Business Leaders**  
Dean Saunders,  
ALC, CCIM



**Largest Commercial  
Real Estate Brokers  
in Tampa Bay**



**Ranked 210 on Inc.  
5000 Regional List**



For more information visit [SVNsaunders.com](http://SVNsaunders.com)

### HEADQUARTERS

1723 Bartow Road  
Lakeland, Florida 33801  
863.648.1528

### ORLANDO

605 E Robinson Street, Suite 410  
Orlando, Florida 32801  
407.516.4300

### NORTH FLORIDA

356 NW Lake City Avenue  
Lake City, Florida 32055  
352.364.0070

### GEORGIA

218 W Jackson Street, Suite 203  
Thomasville, Georgia 31792  
229.299.8600

©2023 SVN | Saunders Ralston Dantzler Real Estate. All SVN® Offices Independently Owned and Operated SVN | Saunders Ralston Dantzler Real Estate is a full-service land and commercial real estate brokerage with over \$4 billion in transactions representing buyers, sellers, investors, institutions, and landowners since 1996. We are recognized nationally as an authority on all types of land, including agriculture, ranch, recreation, residential development, and international properties. Our commercial real estate services include property management, leasing and tenant representation, valuation, business brokerage, and advisory and counseling services for office, retail, industrial, and multifamily properties. Our firm also features an auction company, forestry division, international partnerships, hunting lease management, and extensive expertise in conservation easements. Located in Florida and Georgia, we provide proven leadership and collaborative expertise backed by the strength of the SVN® global platform.

