



Mizelle Creek  
Multi-Family Estate | Lithia, FL

**Fischbach**  
LAND COMPANY

*Lifestyle & Luxury*



## Spectacular Estate

This sprawling estate boasts 4 homes in addition to 3 vacant, buildable lots tucked at the end of a quiet country road in Lithia. As you enter through the custom iron gates, you'll notice the unique details and serene atmosphere at every turn of the winding drive. The over 10,000 square feet of living space in the manor home is the crowning jewel of the estate with its luxury and grandeur - truly a one-of-a-kind masterpiece! The potential for 7 homes on over 42 acres makes this the perfect place for a family compound or private community. As you follow the trails you'll find two ponds - both with bridges and islands, a meandering creek, open pastures with perennial peanuts for grazing animals, a private vineyard, an expansive garage and workshop, thriving gardens with statues and motion-activated fountains, and an established shooting range.

[Click for Video](#)

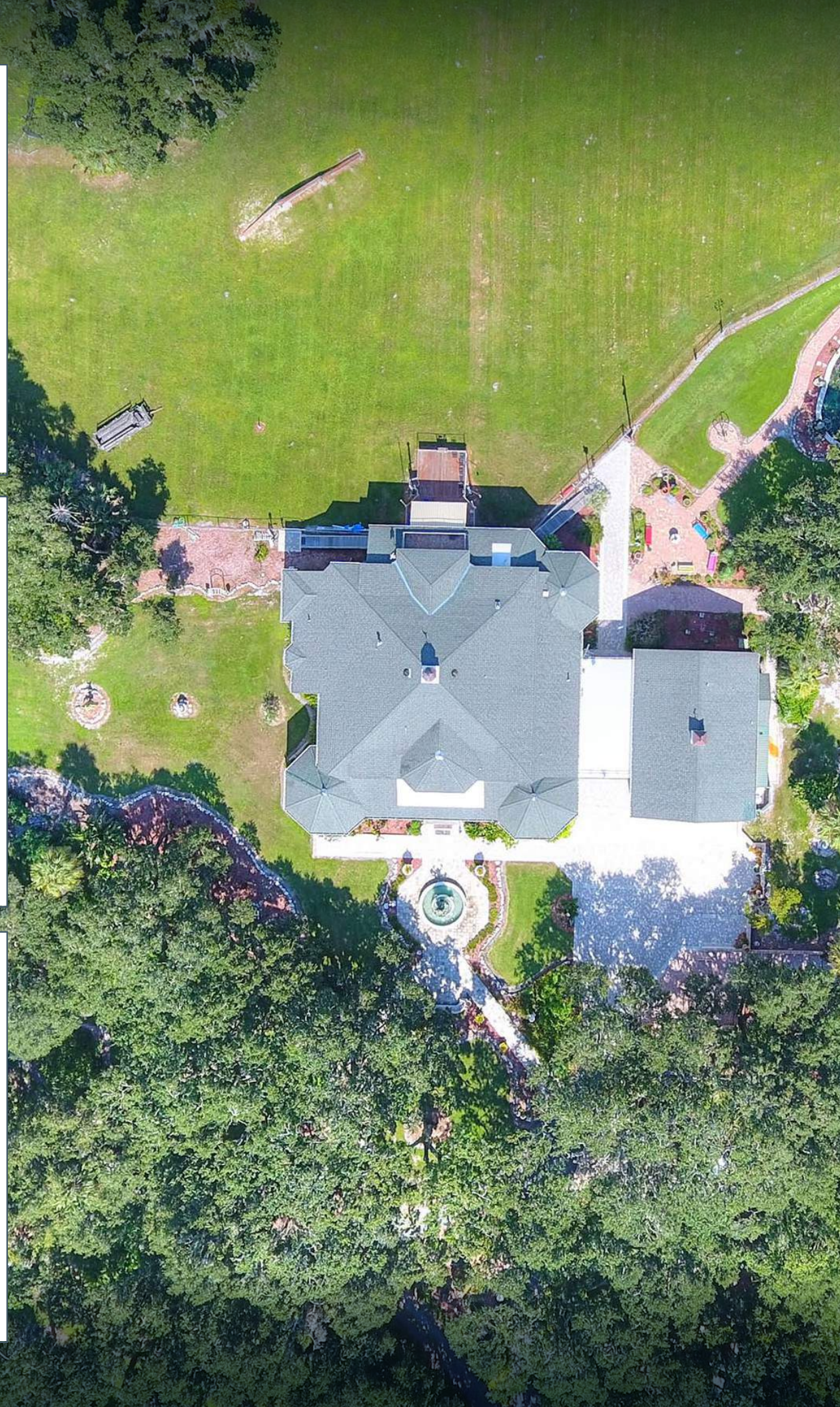
[Click for Website](#)

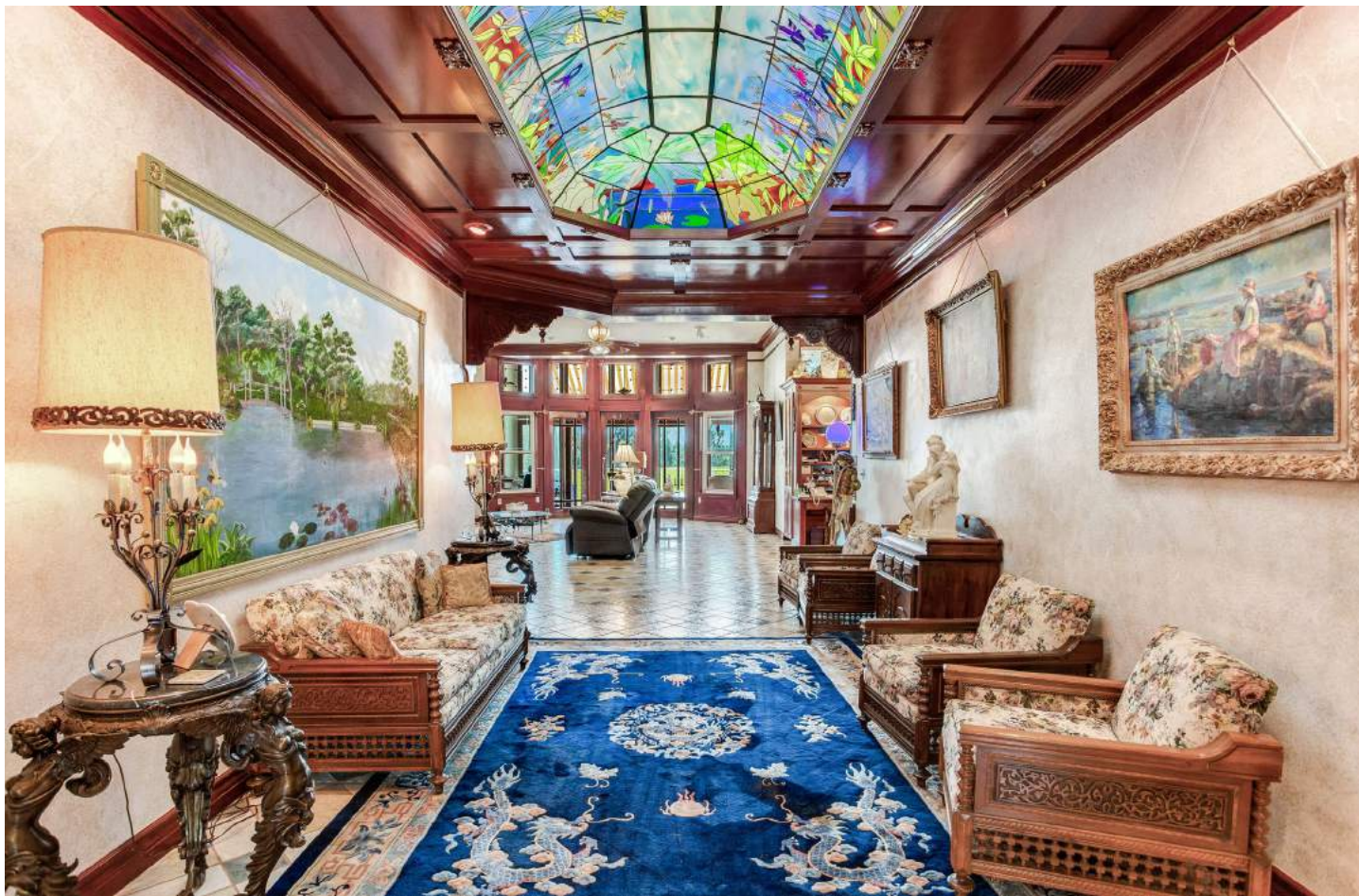
7 Parcels Available  
as a whole or separate



## ESTATE HOME

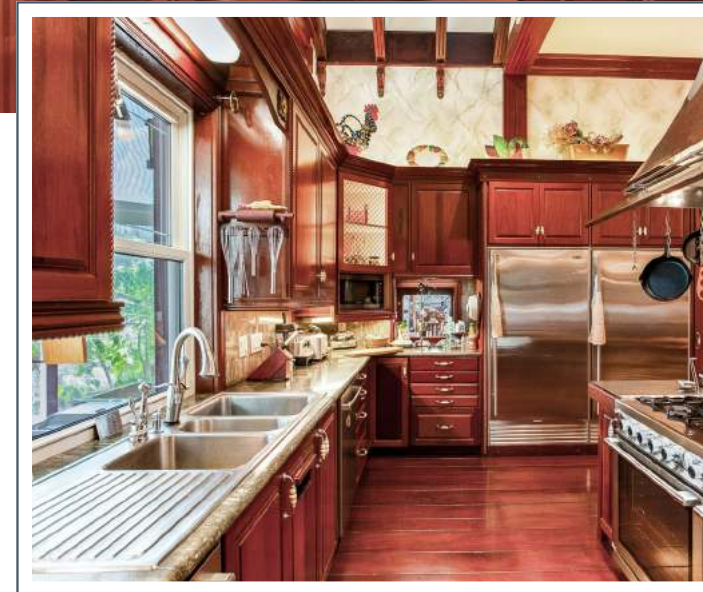
As you make your way up the winding, private drive, you'll notice charming details at every turn - the stately live oaks, the lush landscaping, the unique statues, and the motion-activated fountains that make your entrance all the more fun! Pull onto the expansive brick paver driveway and past the impressive fountain onto the massive front porch. Over 12 feet in depth and 94 feet long, the porch offers the perfect warm welcome to guests with sitting areas, a TV and hot tub. As soon as you step foot through the front door you will be in awe at the exquisite details that run throughout the house. Mahogany doors and trim, imported custom glass work and lighting, Italian ceramic tile, marble statues, Tulikivi soapstone fireplace, and a personal elevator. The first level of the home boasts the theater with star-lit ceiling, home-office, mail room, two guest bathrooms, catering kitchen, trash chute, solarium and master suite. The kitchen and dining areas of the home are warm enough for family dinners and substantial enough to cater enormous parties. The main kitchen features sprawling granite countertops and commercial grade appliances, with a wet bar, large walk-in pantry and stone-walled wine cellar. On the opposite side of the home is the impressive master suite with attached sitting room, bathroom and walk-in closet. Across the living room are large French doors that lead onto the solarium - an all-weather room with panoramic views. Then step onto "The Outback" - the custom back deck designed to remind you of a ship deck overlooking the sea of perennial peanuts in the pasture. Upstairs are three additional bedrooms and an over-sized library and office. The perfect place to run your business, host meetings, or encourage warm conversations over book club or study sessions, this room is lined with mahogany bookshelves, breathtaking views over the patio and multiple seating areas. Outside you'll wander down a brick path, through the garden to the large pond that surrounds a massive island. Enjoy views from the top of the hill on the island as you make your way across the bridge, feed fish from the gazebo or race paddle boats around the island and under the fountains! This property is overflowing with love and character - a truly unique opportunity and more to see than can even be imagined! A rare and real find for the most discerning buyer!





## A SIGNATURE SHOWPIECE

Mahogany Trim Throughout  
 Glass Light Dome Entry  
 Custom Carved Doors from Honduras



## EXPANSIVE GOURMET KITCHEN

Solid Mahogany Cabinets  
 Commercial Grade Appliances  
 Sprawling Granite Countertops  
 Separate, Full Catering Kitchen  
 Wine Cellar





This stunning property has earned its name as a Garden Estate with its expansive and impressive grounds. A large pond wraps around **“Lookout Hill”** – the appropriately named island. Immerse yourself in this serene space with fountains, a garden gazebo, fish feeding station, paddleboats and bridge to the island. **“The Outback”** is the nautical themed back deck which showcases panoramic views of the thriving perennial peanut pasture dotted with glowing yellow flowers. The enormous and impressive workshop is the central hub of the property balancing functionality and charm, and even features a quaint greenhouse.





## MIZELLE CREEK PARCEL INFORMATION

PARCEL	ACREAGE	PRICE	IMPROVEMENTS
<b>Estate Home</b>	12.34±	\$1,900,000	10,167 SF; 5BR/4.5BA
<b>Lot 1</b>	5.38±	\$415,000	1,440 SF; 3BR/2BA
<b>Lot 2</b>	5.40±	\$500,000	2,226 SF; 4BR/3BA
<b>Lot 3</b>	7.33±	\$300,000	
<b>Lot 5</b>	5.16±	\$290,000	
<b>Hendry</b>	2.15±	\$200,000	
<b>2234 Hendry</b>	4.61±	\$425,000	1,152 SF; 2BR/2BA

# LOT 1



# LOT 2



## SPECTACULAR PRIVATE POND

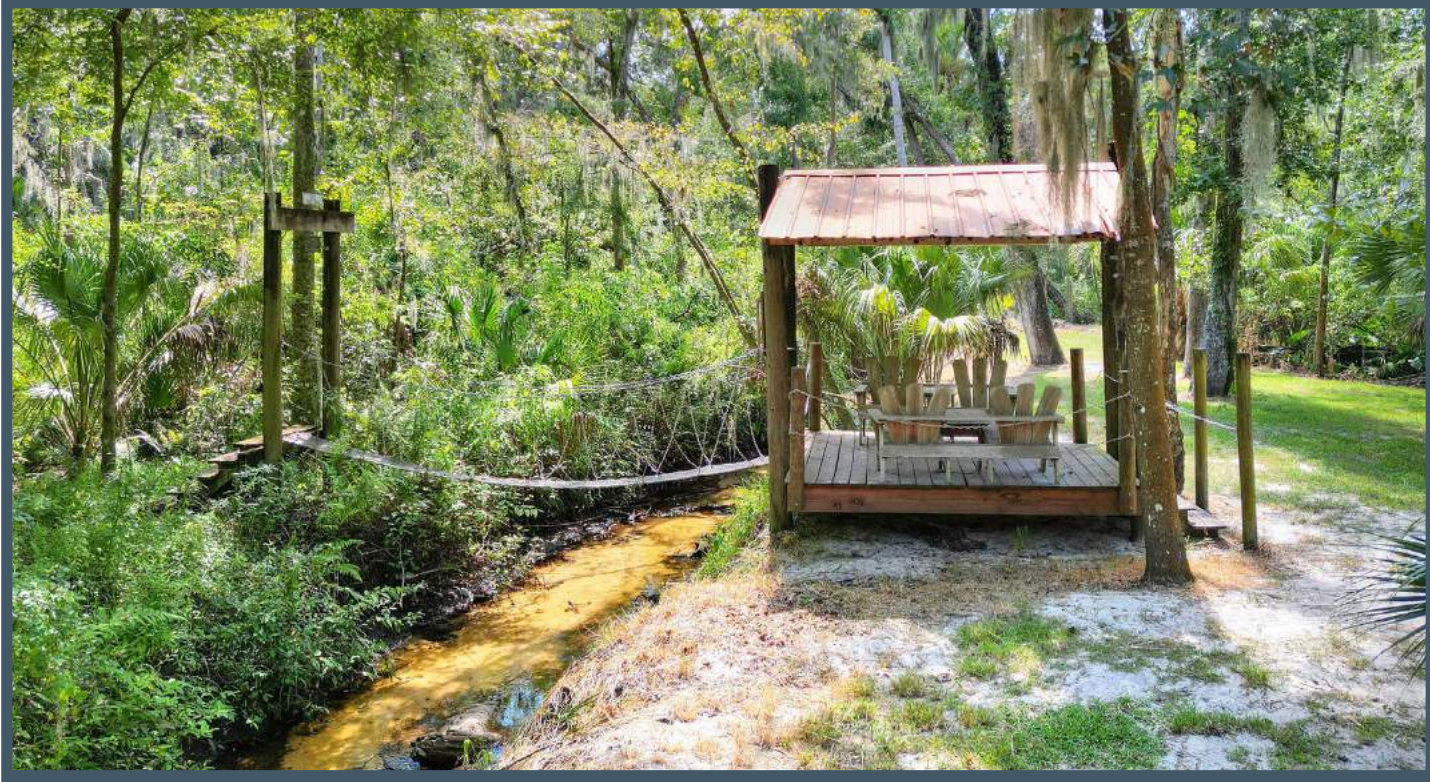
1,440 Square Feet  
3 Bedrooms and 2 Bathrooms  
5.38± Acres  
\$415,000  
Features a Private Pond with Island and Gazebo

## SECLUDED HOMESTEAD

2,226 Square Feet  
4 Bedrooms and 3 Bathrooms  
5.40± Acres  
\$500,000  
Features a Large Pasture with Established Vineyard



# LOT 3



7.33± ACRES

\$300,000

Features Winding Mizelle Creek

This one-of-a-kind Lithia homesite sits along a private driveway and offers complete serenity with lush woods full of natural Florida landscape. With some small areas already cleared, you can envision your perfect dream home tucked away and perfectly framed by the thriving foliage. The real gem on this property is the sandy-bottom creek that runs through the property and the adorable gazebo and bridges that make this your own private park!

# LOT 5



5.16± ACRES

\$290,000

This 5± acre parcel is at the end of a dead end road leading to the very end of a private driveway. Balancing a wide-open pasture, crepe myrtle lined drive and small wooded section, the possibilities are endless! If you're looking for serenity and seclusion, this is the perfect place to put down roots in your own homestead. The open pasture is planted in perennial peanuts and features a large, custom bat house.



# HENDRY



2.15± ACRES

\$200,000

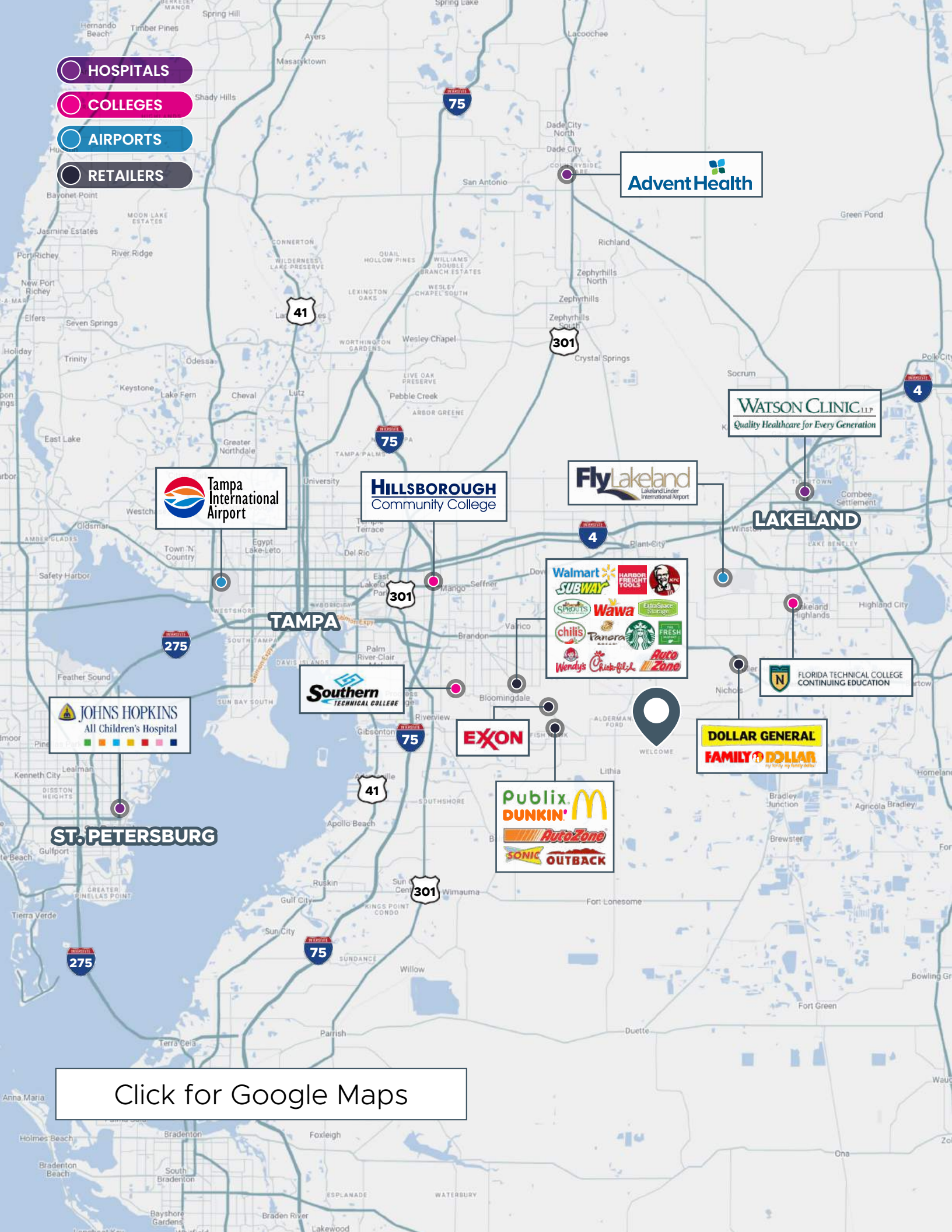
This 2± acre parcel sits peacefully among beautiful mature oak trees. If you are looking for a hidden country paradise full of lush greenery and shade, this is the perfect place. This secluded lot is located at the dead end of quiet Hendry Road, giving you the privacy and tranquility for your new escape from the busy city bustle.

# 2234 HENDRY



CHARMING  
FARM HOUSE

1,152 Square Feet  
2 Bedrooms and 2 Bathrooms  
4.61± Acres  
\$425,000



- HOSPITALS
- COLLEGES
- AIRPORTS
- RETAILERS

REPRESENTED EXCLUSIVELY BY:



**Reed Fischbach**  
 Broker  
 reed@fischbachlandcompany.com



**Melissa Raburn**  
 Agent  
 melissa@fischbachlandcompany.com

Click for Google Maps

**Fischbach**  
**LAND COMPANY**  
 fischbachlandcompany.com

Fischbach Land Company  
 917 S PARSONS AVENUE  
 BRANDON, FL 33511  
 813-540-1000

An aerial photograph of a large, multi-winged estate with a grey shingled roof and white siding. The house features several gables and a prominent central tower. A large, paved driveway leads to a two-car garage. In the foreground, a circular fountain with a central sculpture sits on a stone patio. To the right, a well-manicured lawn is bordered by a stone retaining wall. In the background, a swimming pool with a blue slide and a gazebo is visible, surrounded by lush greenery and palm trees. A golf course fairway extends to the left of the property. The overall scene is one of a luxurious and well-maintained residential property.

**Fischbach**  
**LAND COMPANY**

*Lifestyle & Luxury*