

UC
RANCH
PROPERTIES
A Division of United Country Real Estate



**United
Country**
Real Estate

**Jett Blackburn
Real Estate Inc.**



Rivers End Getaway

\$1,000,000



Curt's Contact Card

Presented by
Curt Blackburn & Jake Blackburn
United Country Jett Blackburn Real Estate Inc.
707 Ponderosa Village
Burns, OR 97720
541/573-7206 (office) 541/573-5011 (fax)
<http://www.jettblackburn.com>



Jake's Contact Card



ADDRESS: 20 Minutes North of Burns, Oregon

LEGAL DESC.: T21S R29E WM Sec 02 TL 300
T21S R29E WM TL 200, 600, 1200

PRICE: \$1,000,000

TAXES: \$517.35

ACREAGE: 512.95

WATER RIGHTS: 68.9+/- acres of flood rights out of the Silvies River with a priority of 12/31/1889

REMARKS: This Eastern Oregon acreage is a remote getaway where [Emigrant Creek](#) and [Silvies River](#) meet that is roughly 20 miles North of Burns. With around 2.5 miles of river front on the Silvies River this property is a unique piece of property. The land is covered in rimrock, willows, pine trees, and open meadows, that provide a great environment for the [elk](#) and [deer](#) in the area. Along with the elk and deer, the Silvies River provides a great source of trout fishing. It is fenced throughout the parcels and cross fenced for cattle grazing. The land qualifies for 2 [LOP](#) elk and deer tags and is surrounded by thousands of acres of public lands in the [Silvies Hunting Unit](#). This property includes 4 different tax lots potentially making it available for multiple dwellings. This is truly a unique parcel of land to escape too.

OWNER: Smith Brothers LLC

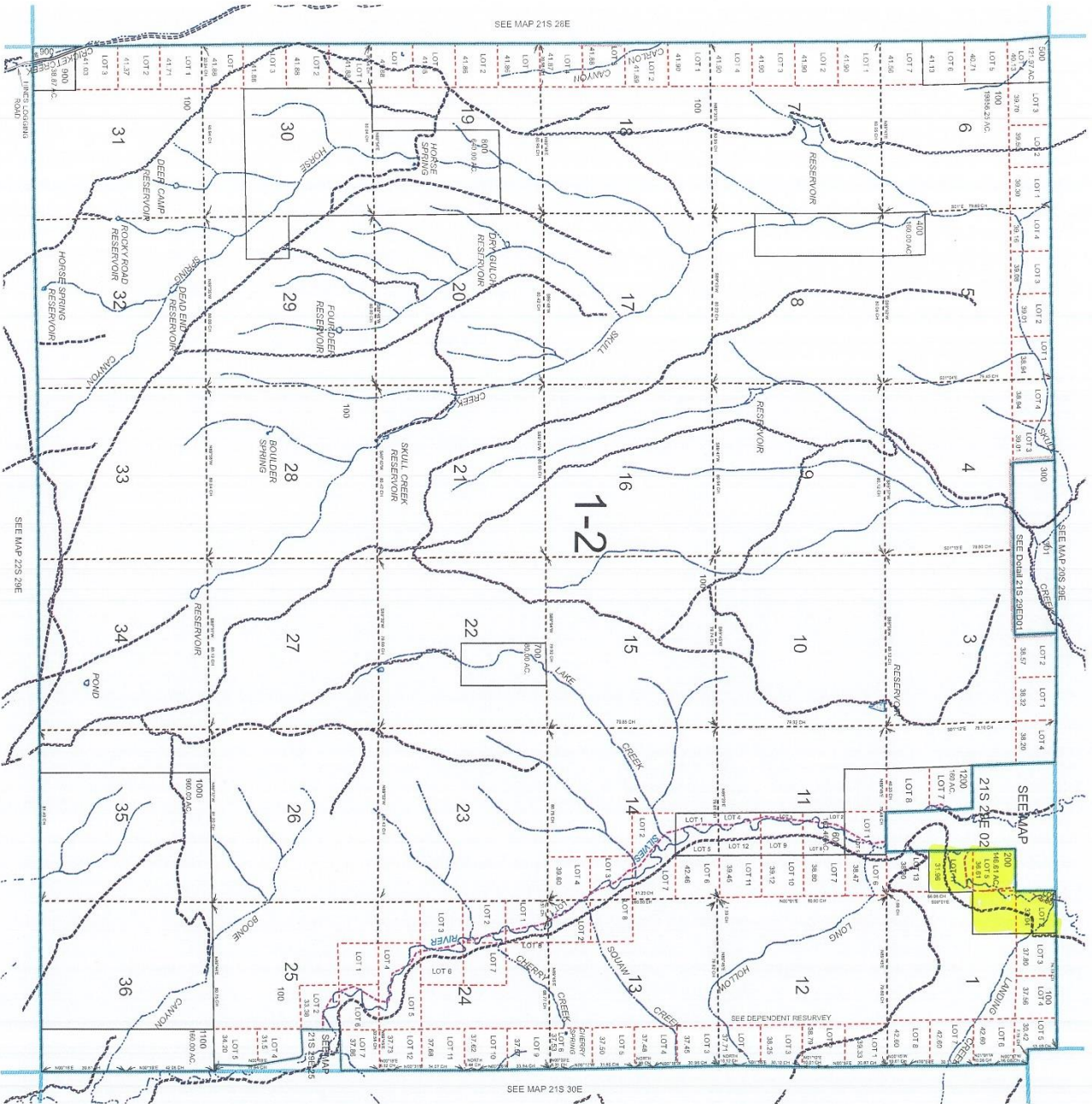
The seller and his agent make these representations in good faith, from personal knowledge and experience. However, the buyer should inspect this property or cause this property to be inspected by knowledgeable persons so that the buyer may purchase without relying upon any representations made by the seller or his agent. Also, unless otherwise specified we, Jett Blackburn Real Estate, Inc. agents, represent the seller on all of our listings.



THIS MAP WAS PREPARED FOR ASSESSMENT PURPOSE ONLY

T.21S. R.29E. W.M. HARNEY COUNTY

1" = 2000'

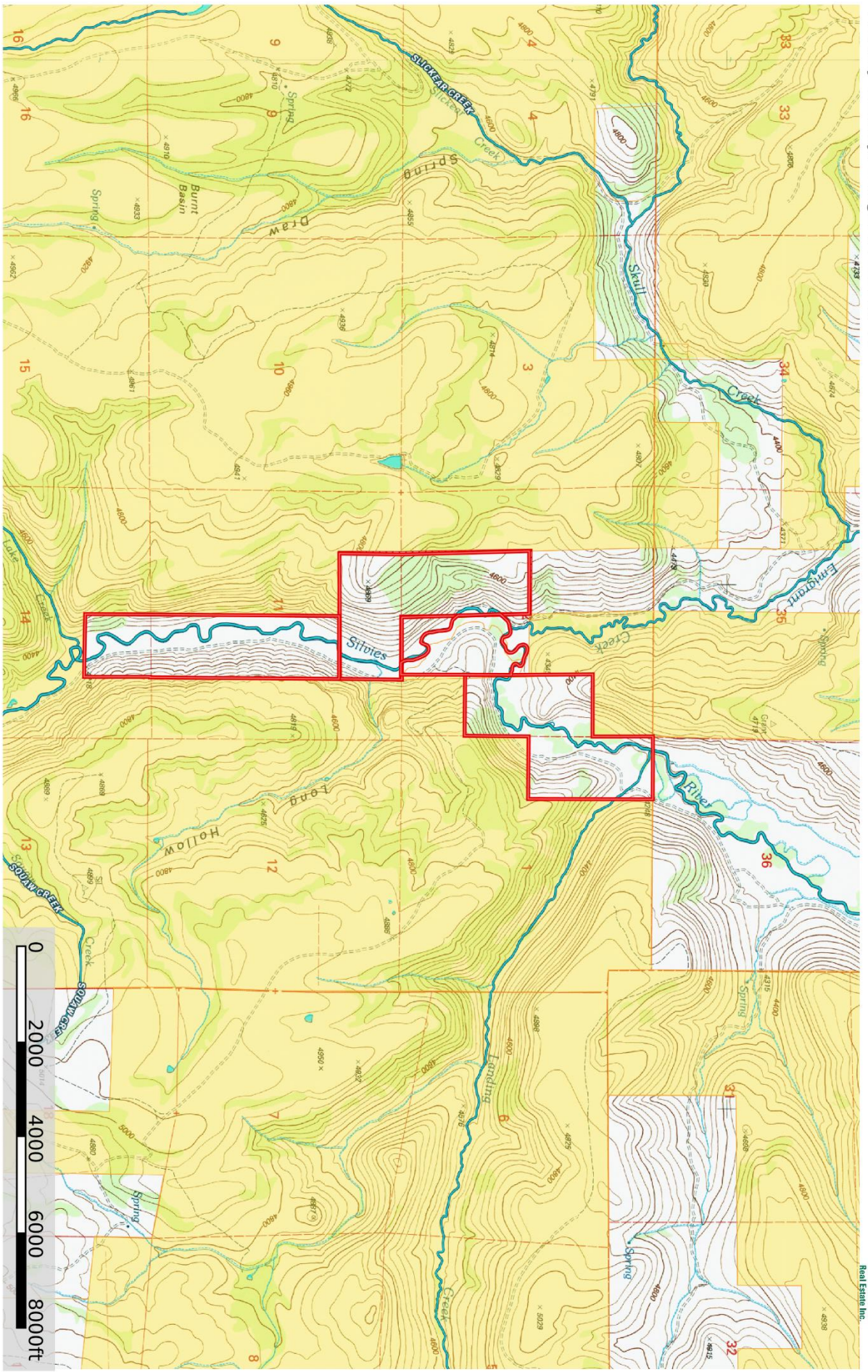


PRINTED ON 4/7/2017

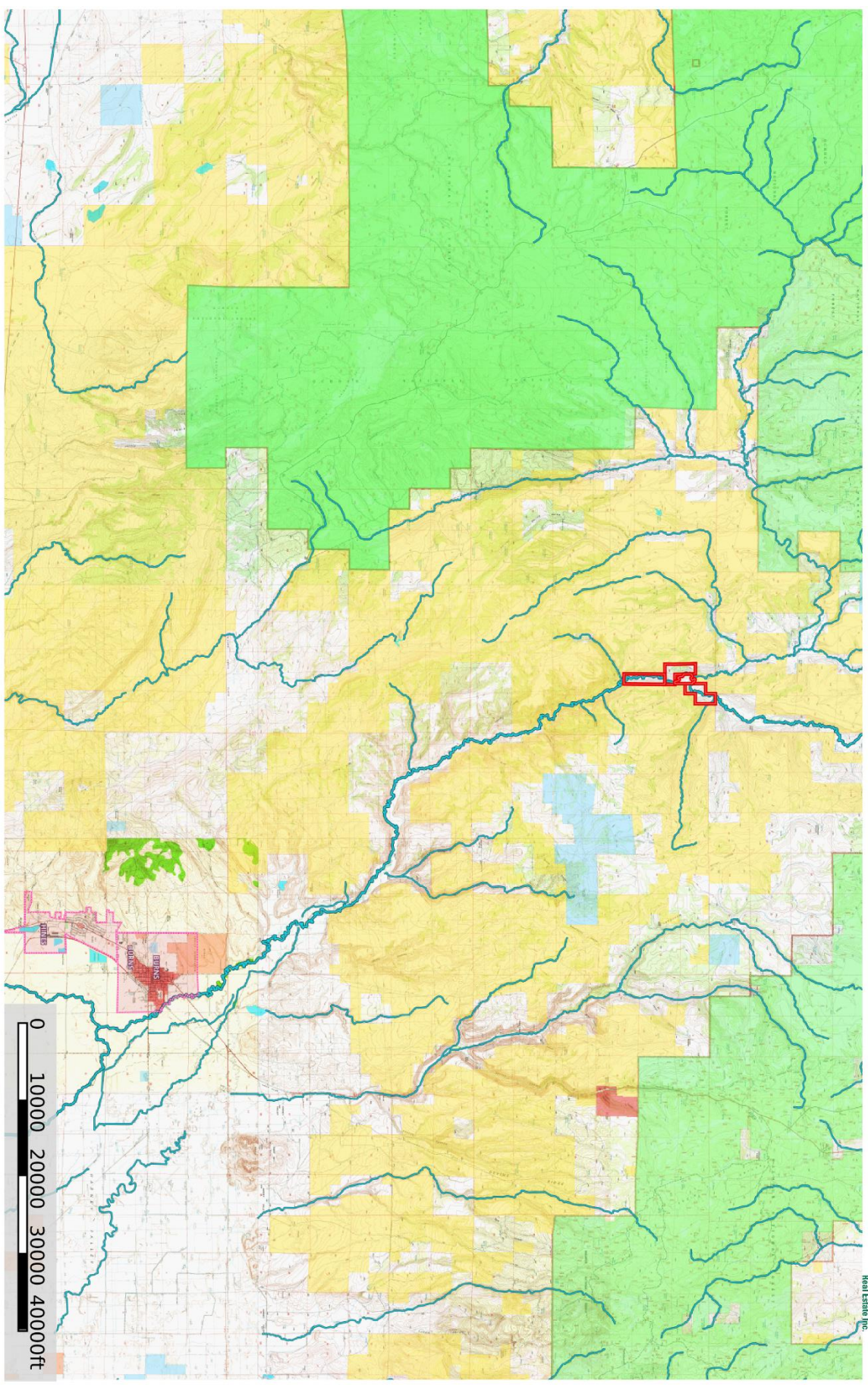
21S29E

21S29E

-  Boundary
-  Boundary
-  Forest Service
-  State Land
-  Fish and Wildlife
-  National Park
-  Other
-  BLM
-  Local Government
-  Stream, Intermittent
-  River/Creek
-  Water Body



Smith Property
Harney County, Oregon, 160 AC +/-



- Boundary
- Boundary
- Forest Service
- State Land
- Fish and Wildlife
- National Park
- Other
- BLM
- Local Government
- Stream, Intermittent
- River/Creek
- Water Body

Curt Blackburn
P. 541-573-7206

office@jetblackburn.com

707 Ponderosa Village, Burns, OR 97720

The information contained herein was obtained from sources deemed to be reliable. Midright Services makes no warranties or guarantees as to the completeness or accuracy thereof.