

# 120 Acre Recreation/Timber Tract Oktober County, MS



\$4,200 per  
Acre

120 +/- acre property located approximately 25 minutes Northwest of Starkville, MS., approximately ½ mile North of MS Hwy 82 off Harpole road near the Center Grove community. The property is primarily Pine Chip & Saw timber which has been thinned once. No hardwoods were cut during the thinning leaving excellent Deer and Turkey hunting potential. Logging roads are in place with plans to upgrade as weather permits. Utilities are located on Harpole road. Call Doyes for your personal tour.

**Directions from Hwy 82 and 25 intersection in Starkville, MS:** Travel West on MS 82 for approximately 2 miles, turn right on Harpole road, then North for approximately ½ mile, tract will be on left of gravel road.



*Call me today!*

**DOYES HOLLAND**, REALTOR®  
DHolland@TomSmithLand.com  
662.268.6333 office | 662.312.2165 cell



**TomSmithLandandHomes.com**

Information is believed to be accurate but not guaranteed.



COVERT COVERT 69 °F 20°C 12-06-2022 18:42:57



COVERT COVERT 92 °F 33°C 12-07-2022 11:43:01



COVERT COVERT



LandReport  
2011-2022  
AMERICA'S  
BEST  
BROKERAGES

*Call me today!*

**DOYES HOLLAND, REALTOR®**  
DHolland@TomSmithLand.com  
662.268.6333 office | 662.312.2165 cell



**TomSmithLandandHomes.com**

Information is believed to be accurate but not guaranteed



*Call me today!*

**DOYES HOLLAND**, REALTOR®  
DHolland@TomSmithLand.com  
662.268.6333 office | 662.312.2165 cell



**TomSmithLandandHomes.com**



LandReport  
2011-2022  
AMERICA'S  
BEST  
BROKERAGES

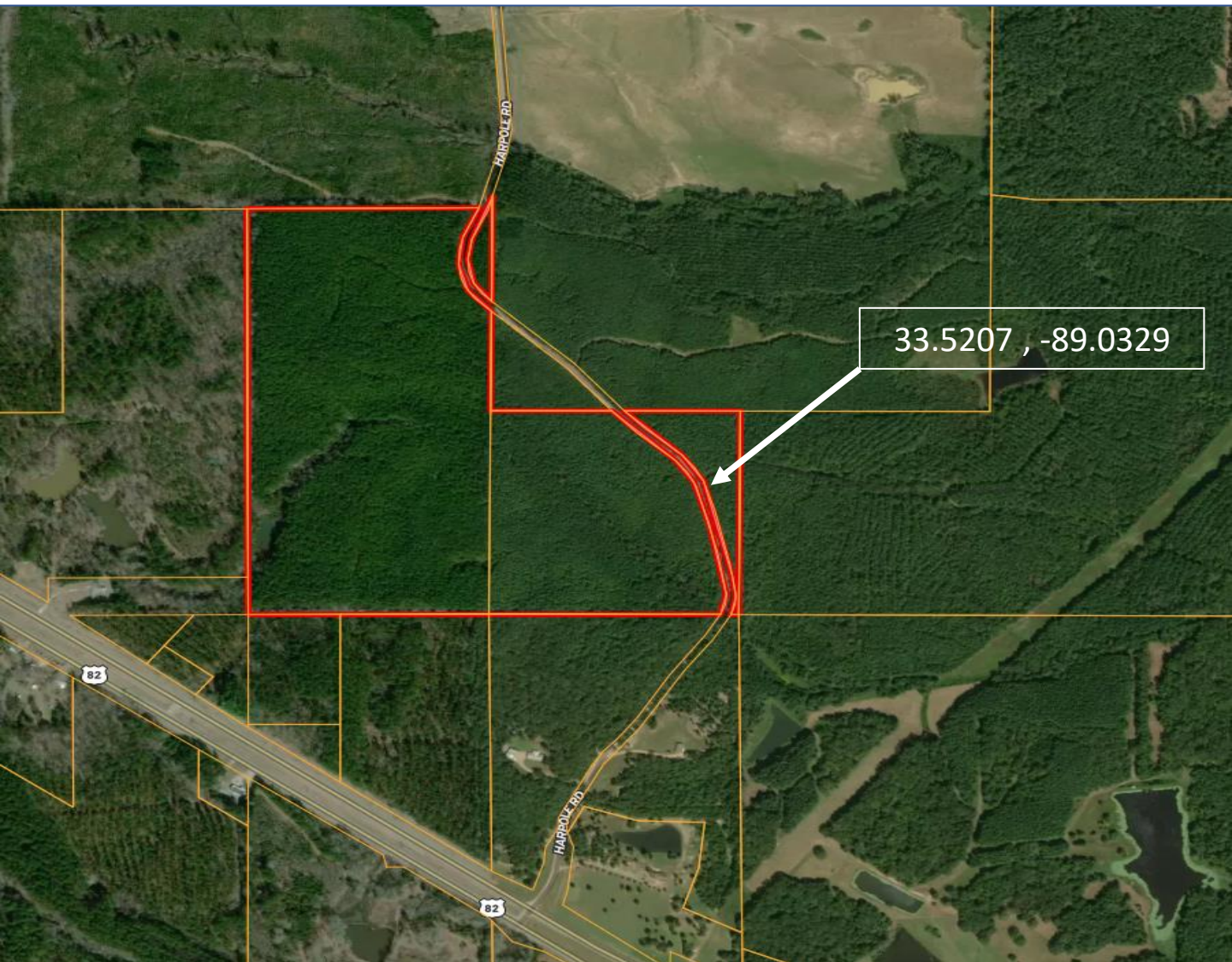
*Call me today!*

**DOYES HOLLAND, REALTOR®**  
DHolland@TomSmithLand.com  
662.268.6333 office | 662.312.2165 cell



**TomSmithLandandHomes.com**

# Aerial Map



[Click for Interactive map](#)



*Call me today!*

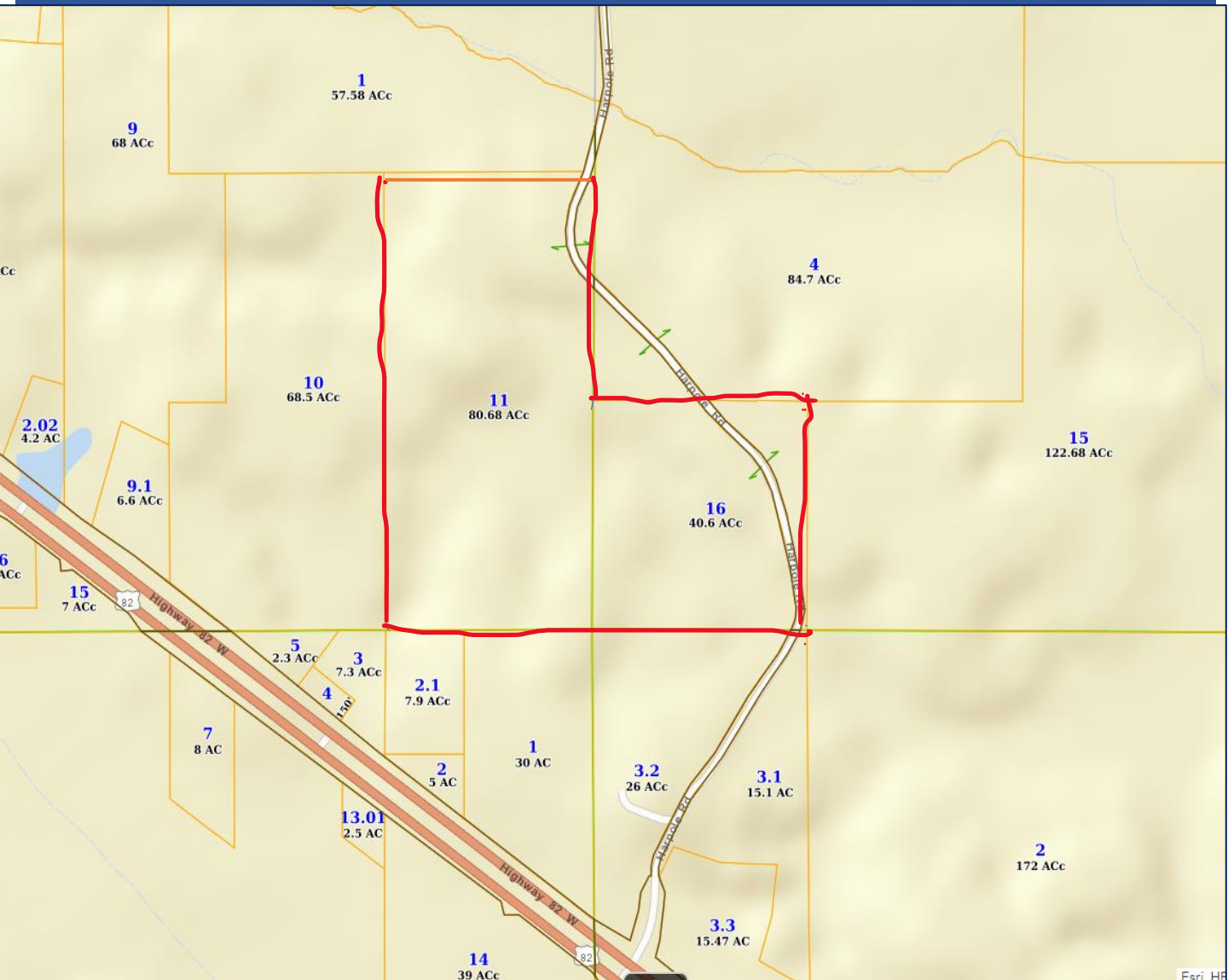
**DOYES HOLLAND**, REALTOR®  
DHolland@TomSmithLand.com  
662.268.6333 office | 662.312.2165 cell



**TomSmithLandandHomes.com**

Information is believed to be accurate but not guaranteed.

# Ownership Map



*Call me today!*

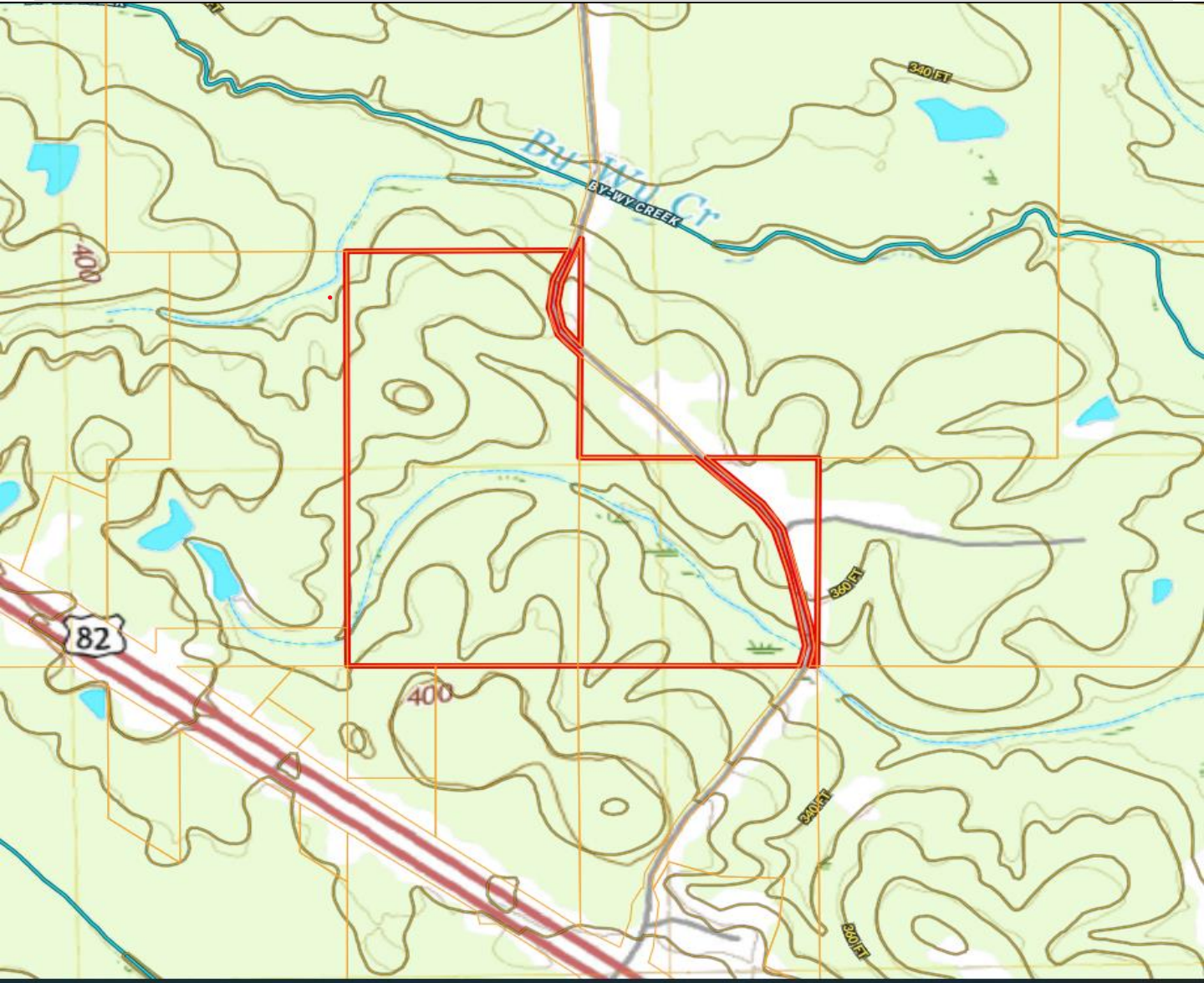
**DOYES HOLLAND**, REALTOR®  
DHolland@TomSmithLand.com  
662.268.6333 office | 662.312.2165 cell



**TomSmithLandandHomes.com**

Information is believed to be accurate but not guaranteed.

# Topographical Map



LandReport  
2011-2022  
AMERICA'S  
**BEST**  
BROKERAGES

*Call me today!*

**DOYES HOLLAND**, REALTOR®  
DHolland@TomSmithLand.com  
662.268.6333 office | 662.312.2165 cell

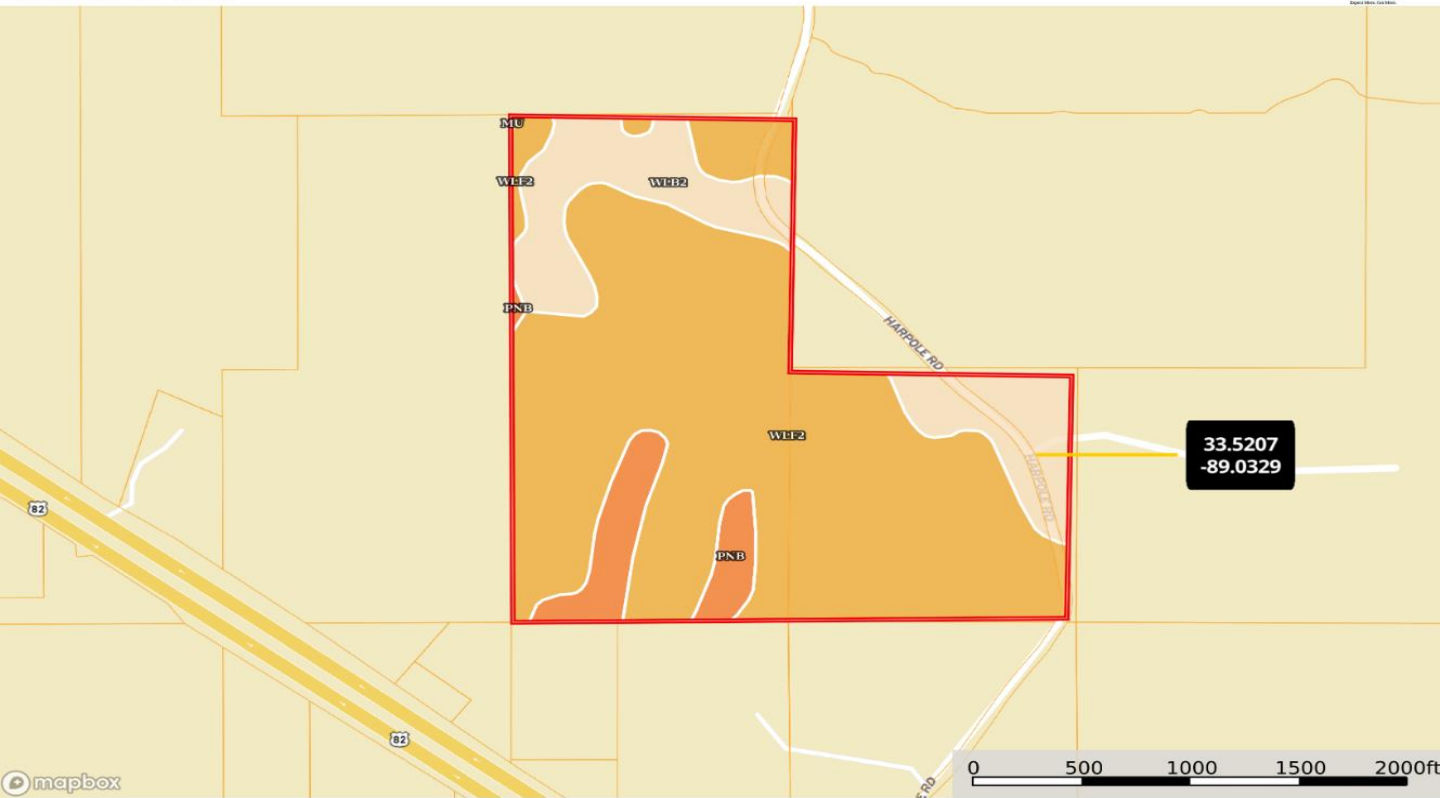


**TomSmithLandandHomes.com**

Information is believed to be accurate but not guaranteed.

# Soil Map

120 Oktibbeha (Flora)  
Mississippi, 120 AC +/-



| Boundary 116.57 ac

SOIL CODE	SOIL DESCRIPTION	ACRES	%	CPI	NCCPI	CAP
WIF2	Wilcox silty clay loam, 12 to 35 percent slopes, eroded	85.81	73.61	0	27	7e
WIB2	Wilcox silty clay loam, 2 to 5 percent slopes, moderately eroded	22.51	19.31	0	45	3e
PnB	Prentiss silt loam, 2 to 5 percent slopes	8.22	7.05	0	54	2e
Mu	Mathiston silt loam, 0 to 2 percent slopes, occasionally flooded	0.03	0.03	0	84	2w
TOTALS		116.57(*)	100%	-	32.39	5.87

(\*) Total acres may differ in the second decimal compared to the sum of each acreage soil. This is due to a round error because we only show the acres of each soil with two decimal.



*Call me today!*

**DOYES HOLLAND**, REALTOR®  
DHolland@TomSmithLand.com  
662.268.6333 office | 662.312.2165 cell

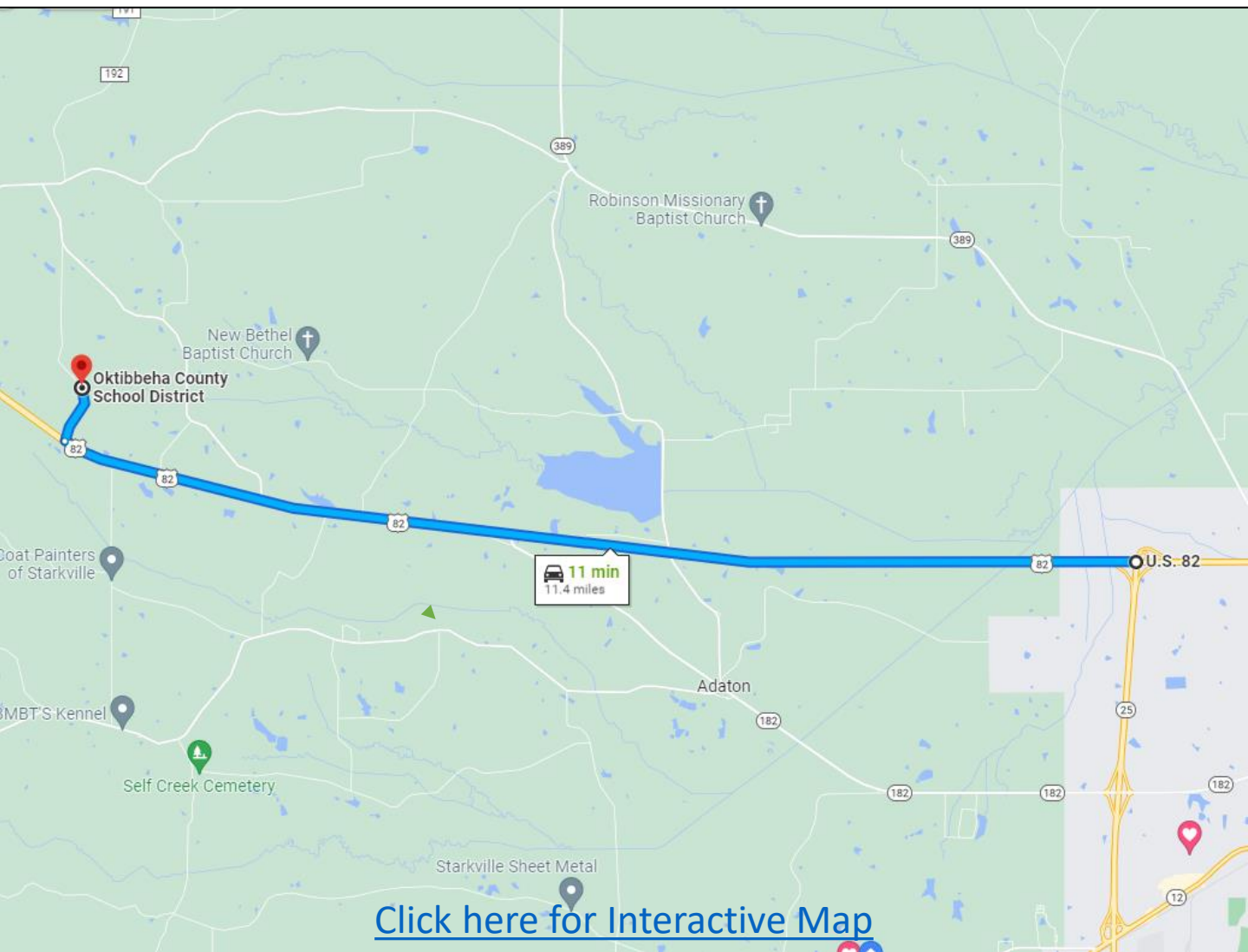


**TomSmithLandandHomes.com**

Information is believed to be accurate but not guaranteed.



# Directional Map



**Directions from Hwy 82 and 25 intersection in Starkville, MS:** Travel West on MS 82 for approximately 10 miles, turn right on Harpole road, then North for approximately 1/2 mile, tract will be on left .



*Call me today!*

**DOYES HOLLAND**, REALTOR®  
DHolland@TomSmithLand.com  
662.268.6333 office | 662.312.2165 cell



**TomSmithLandandHomes.com**

Information is believed to be accurate but not guaranteed.