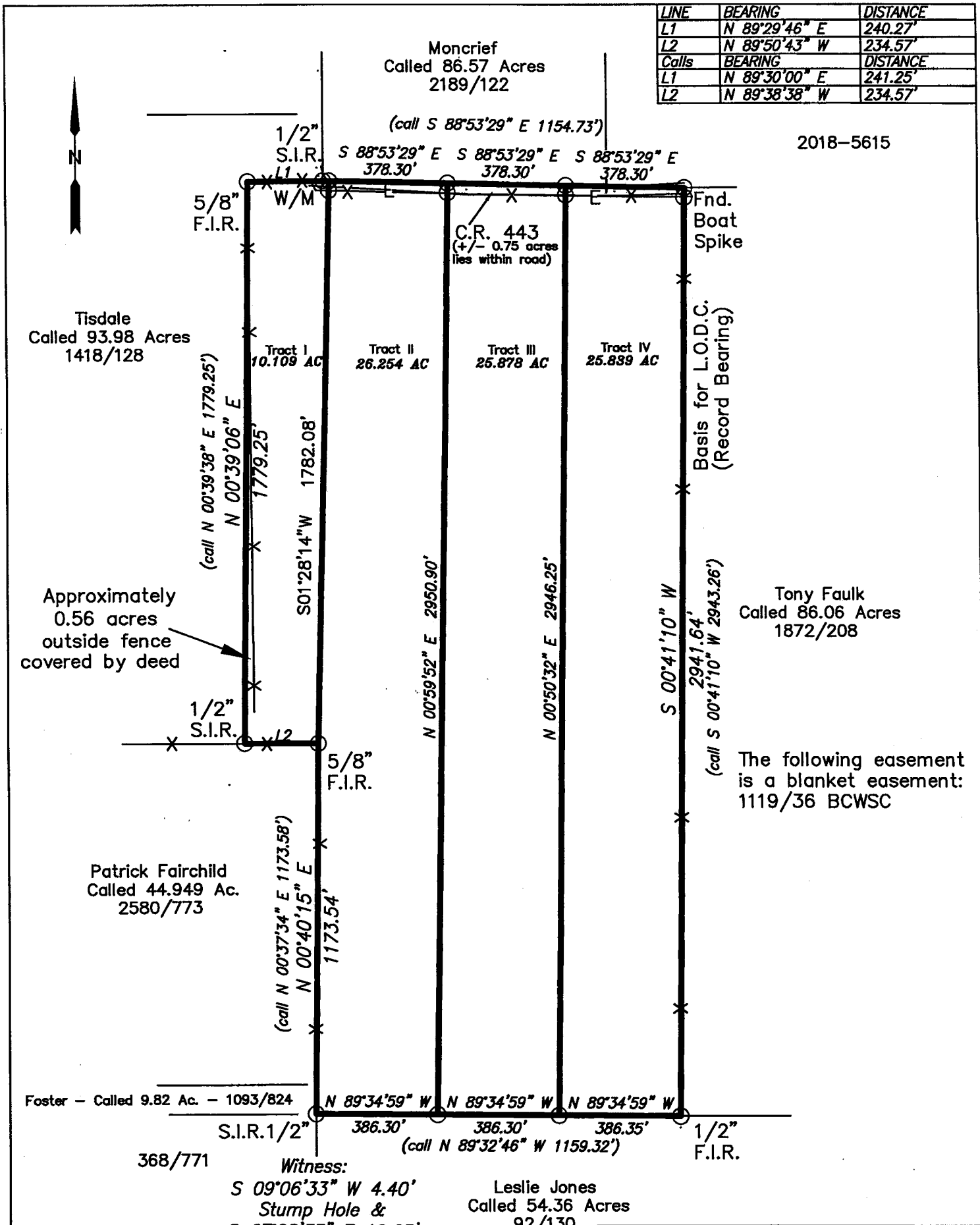


LINE	BEARING	DISTANCE
L1	N 89°29'46" E	240.27'
L2	N 89°50'43" W	234.57'
Calls	BEARING	DISTANCE
L1	N 89°30'00" E	241.25'
L2	N 89°38'38" W	234.57'



Witness:
S 09°06'33" W 4.40'
Stump Hole &
S 67°08'33" E 10.65'
24" Post Oak Stump

Leslie Jones
Called 54.36 Acres
92/130

LEGEND	
P.O.C.	= Point of Commencement
P.O.B.	= Point of Beginning
W/M	= Water Meter
W/V	= Water Valve