



AR RANCH ESTATES

(605) 791-2300
ARRanchEstates.com

*The serenity of country living,
just ten minutes from Rapid City.*

1-2 ACRE LOTS!
\$97,500 - \$124,000



ABOUT AR RANCH ESTATES:

The AR Ranch Estates offers residential lots and homes on acreages. Located six miles north of Rapid City off Erickson Ranch Road, the AR Ranch Estate's expansive Black Hills views and protected valley provide peaceful country living close to city amenities. AR Ranch Estates honors the pioneering heritage of its past and welcomes a new community.



BUY NOW, BUILD LATER!
PAVED ROADS ARE COMING SOON!



SCAN THE QR CODE FOR
FULL PROPERTY DETAILS

HLC Hewitt Land Company
BECAUSE IT'S MORE THAN A DEAL.

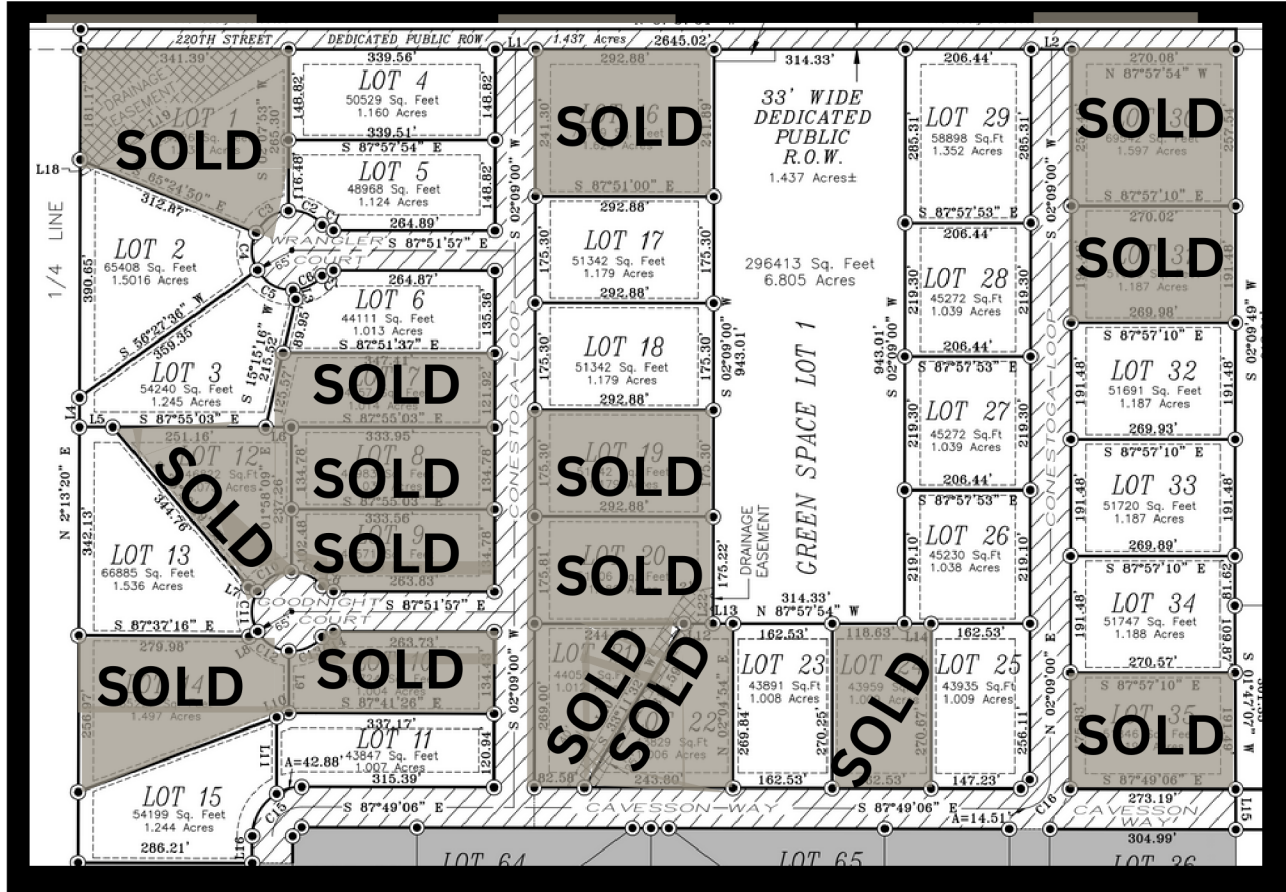
WWW.HEWITTLANDCOMPANY.COM

- TRUSTWORTHY ADVISORS
- EXPERT NEGOTIATORS
- COMPETENT FACILITATORS

INQUIRE TODAY (605) 791-2300
INFO@HEWITTLANDCOMPANY.COM

LandReport
2018-2023
AMERICAN
BEST
BROKERAGES
BROKER OWNED

LOT MAP



AVAILABLE LOT PRICING & ACREAGE

\$124,000

LOT 2 | 1.504
LOT 3 | 1.245
LOT 13 | 1.536
LOT 15 | 1.244
LOT 29 | 1.352

\$114,900

LOT 23 | 1.008
LOT 26 | 1.038
LOT 27 | 1.039
LOT 28 | 1.039
LOT 32 | 1.187
LOT 33 | 1.187
LOT 34 | 1.188

\$113,900

LOT 4 | 1.160
LOT 5 | 1.124
LOT 17 | 1.179
LOT 18 | 1.179

\$97,500

LOT 6 | 1.013
LOT 11 | 1.007
LOT 25 | 1.009