

Jack's Slough Hunting Club

Montgomery County, MS

1 Equity Share \$115,000



- **HUNTING:** deer, turkey, duck, hog, & native small game
- **FISHING:** large mouth bass, bream, other
- **ACREAGE:** owns 1,800 + acres & leases 2,700 ± acres; total of 4,500 ± huntable acres

- **ANNUAL DUES:** \$2,700
- **LOT:** membership includes a lot for a mobile home or camper
- **GAME MANAGEMENT:** minimum standards & liberal harvest set



**CHARLIE
HEINSZ**
REALTOR®

Office: 662.441.2500

Cell: 662.719.7218

Charlie@TomSmithLand.com



A Real Estate Expert You Can Trust

TomSmithLandandHomes.com

Information is believed to be accurate but not guaranteed.





Jack's Slough Hunting Club was established in 1980 near Stewart, MS, on the Big Black River in Montgomery County, MS. The club offers trophy deer, turkey, ducks, and hog hunting along with all the native small game and good fishing on the river or north and south canals. In 1986 the membership began purchasing the land they were hunting as it became available and now owns a little over 1,800 acres and leases approximately 2,700 acres.



The club currently has 26 shares, with each owner having an undivided 1/26 interest or 69.5 ± acres per share. The current amount of huntable acres is 4,500 ± acres, with yearly dues of \$2,700 per shareholder. The revenue from dues is used to pay club expenses such as leases, taxes, repairs, and general maintenance. Each membership includes a lot for a mobile home or camper. A deer management program has been in effect at the club for several years with minimum standards and a liberal harvest set to maintain a quality deer herd.



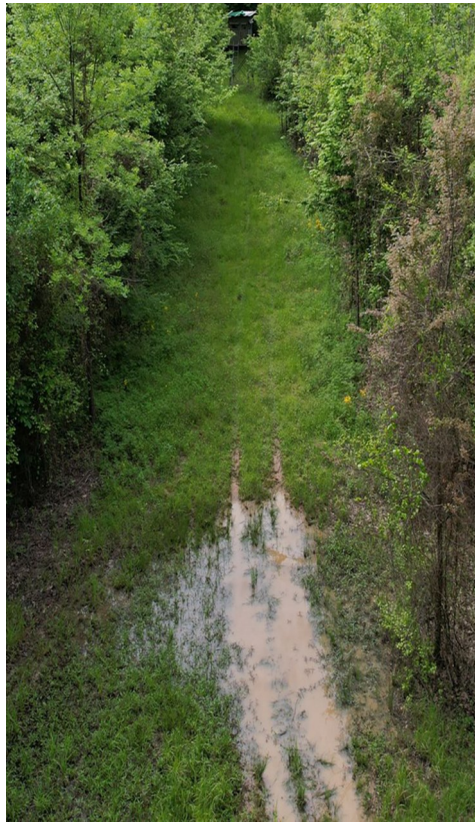
CHARLIE HEINSZ
 REALTOR®
 Office: 662.441.2500
 Cell: 662.719.7218
 Charlie@TomSmithLand.com



A Real Estate Expert You Can Trust
 TomSmithLandandHomes.com

Information is believed to be accurate but not guaranteed.





CHARLIE HEINSZ
REALTOR®

Office: 662.441.2500

Cell: 662.719.7218

Charlie@TomSmithLand.com



A Real Estate Expert You Can Trust

TomSmithLandandHomes.com

Information is believed to be accurate but not guaranteed.





CHARLIE HEINSZ

REALTOR®

Office: 662.441.2500

Cell: 662.719.7218

Charlie@TomSmithLand.com



A Real Estate Expert You Can Trust

TomSmithLandandHomes.com

Information is believed to be accurate but not guaranteed.





CHARLIE HEINSZ
REALTOR®
Office: 662.441.2500
Cell: 662.719.7218
Charlie@TomSmithLand.com



A Real Estate Expert You Can Trust
TomSmithLandandHomes.com

Information is believed to be accurate but not guaranteed.





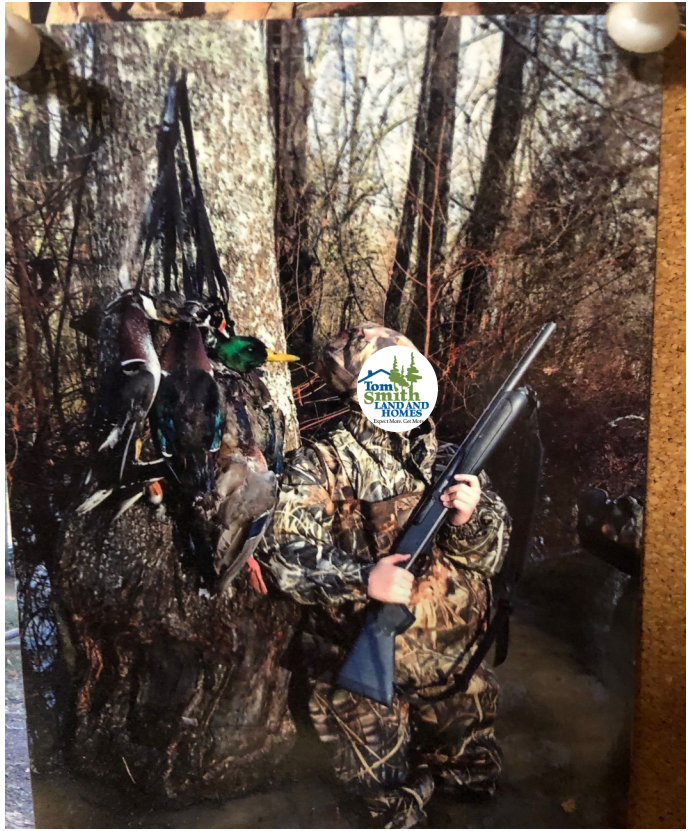
CHARLIE HEINSZ
 REALTOR®
 Office: 662.441.2500
 Cell: 662.719.7218
 Charlie@TomSmithLand.com



A Real Estate Expert You Can Trust
 TomSmithLandandHomes.com

Information is believed to be accurate but not guaranteed.





CHARLIE HEINSZ
REALTOR®
Office: 662.441.2500
Cell: 662.719.7218
Charlie@TomSmithLand.com



A Real Estate Expert You Can Trust
TomSmithLandandHomes.com

Information is believed to be accurate but not guaranteed.





CHARLIE HEINSZ
 REALTOR®
 Office: 662.441.2500
 Cell: 662.719.7218
 Charlie@TomSmithLand.com



A Real Estate Expert You Can Trust
 TomSmithLandandHomes.com

Information is believed to be accurate but not guaranteed.





CHARLIE HEINSZ
REALTOR®

Office: 662.441.2500

Cell: 662.719.7218

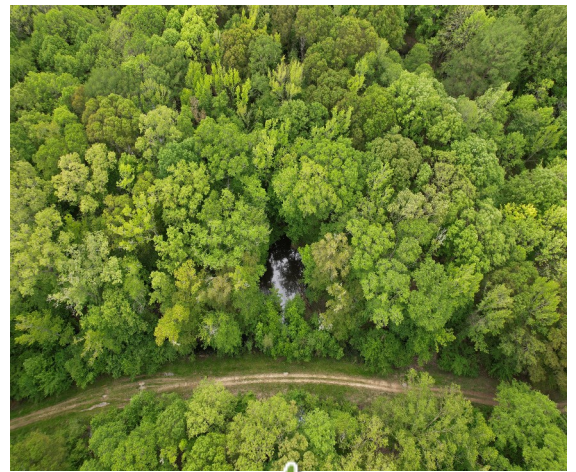
Charlie@TomSmithLand.com



A Real Estate Expert You Can Trust
TomSmithLandandHomes.com

Information is believed to be accurate but not guaranteed.





CHARLIE HEINSZ
REALTOR®

Office: 662.441.2500

Cell: 662.719.7218

Charlie@TomSmithLand.com



A Real Estate Expert You Can Trust

TomSmithLandandHomes.com

Information is believed to be accurate but not guaranteed.





CHARLIE HEINSZ

REALTOR®

Office: 662.441.2500

Cell: 662.719.7218

Charlie@TomSmithLand.com

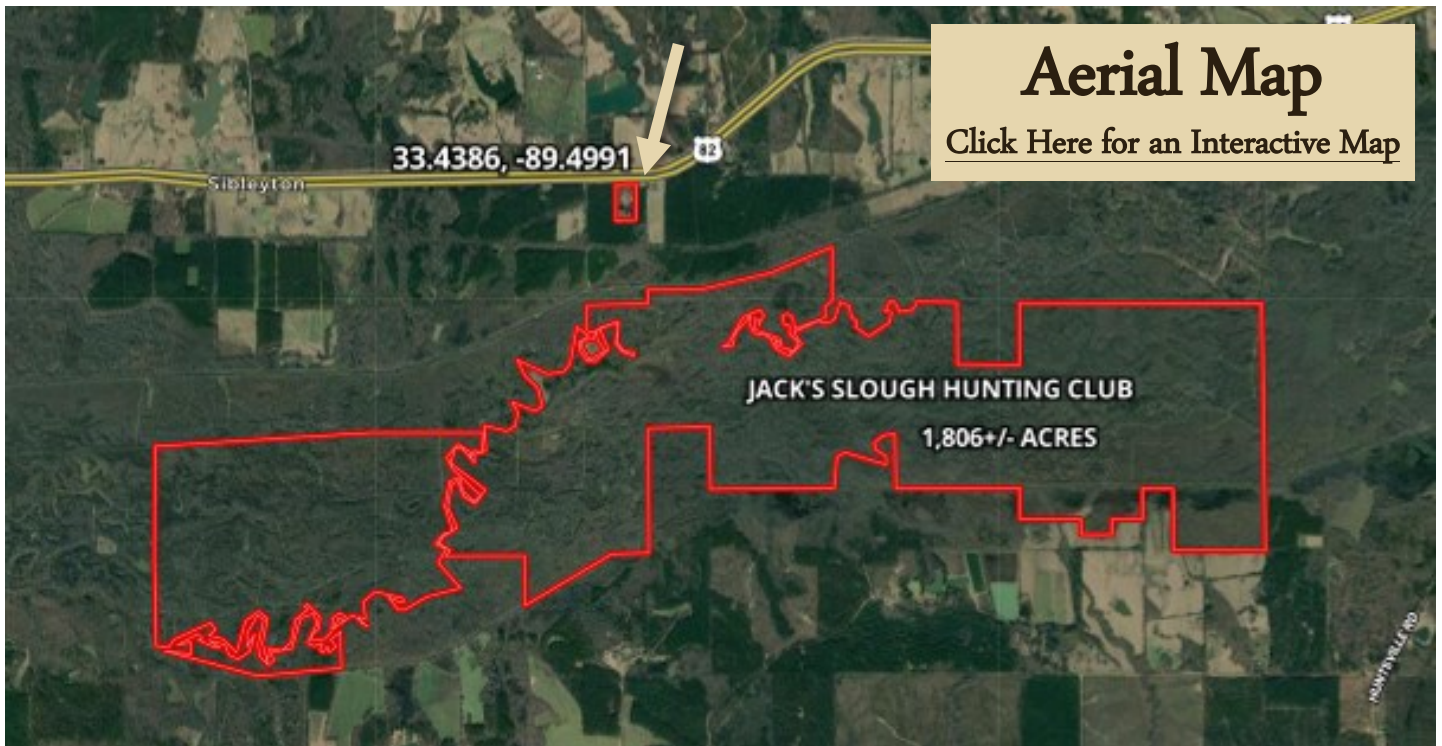


A Real Estate Expert You Can Trust

TomSmithLandandHomes.com

Information is believed to be accurate but not guaranteed.



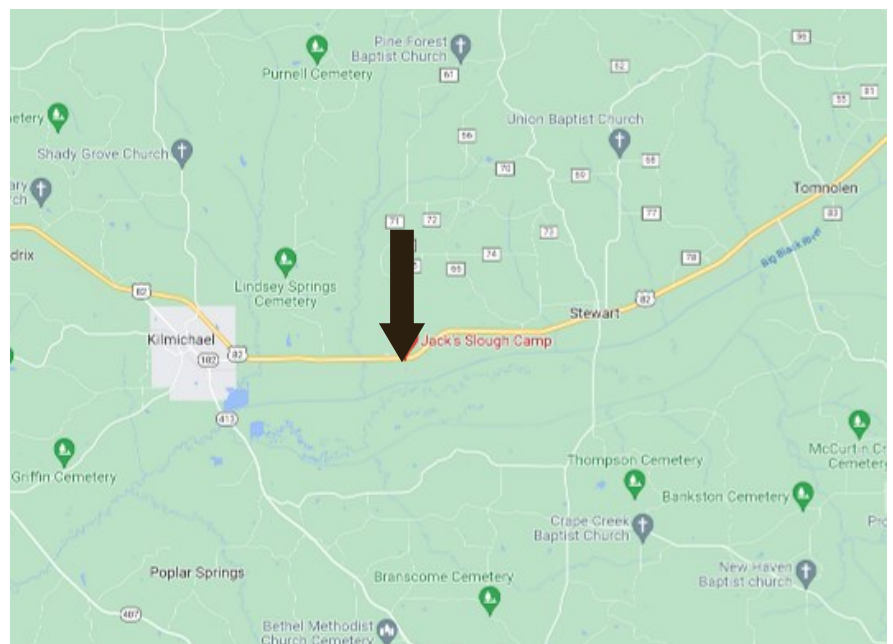


Directional Map

From the intersection of Hwy 413 and Hwy 82 in Kilmichael, MS:

Travel Hwy 82 for 3.1 miles. The entrance to the property will be on the right.

[GOOGLE MAP LINK](#)



CHARLIE HEINSZ

REALTOR®

Office: 662.441.2500

Cell: 662.719.7218

Charlie@TomSmithLand.com

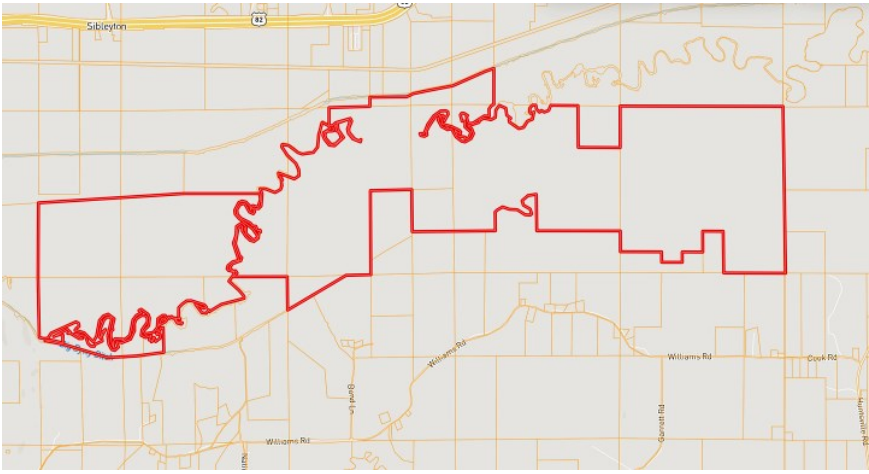


A Real Estate Expert You Can Trust

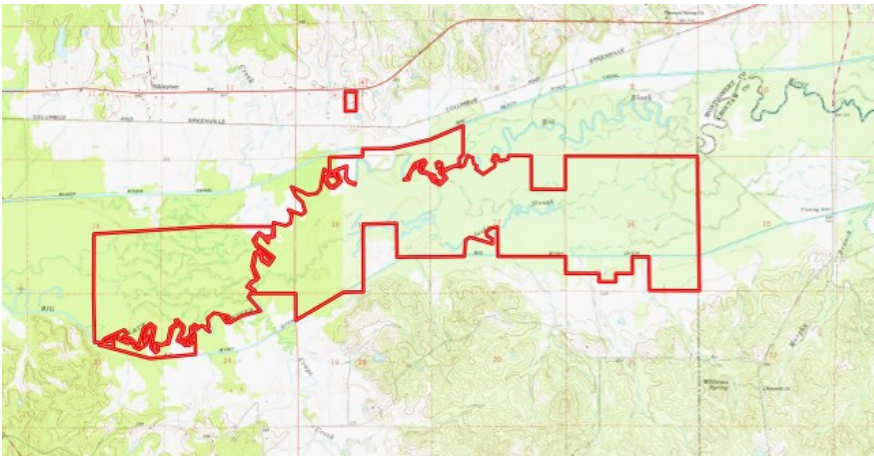
TomSmithLandandHomes.com

Information is believed to be accurate but not guaranteed.

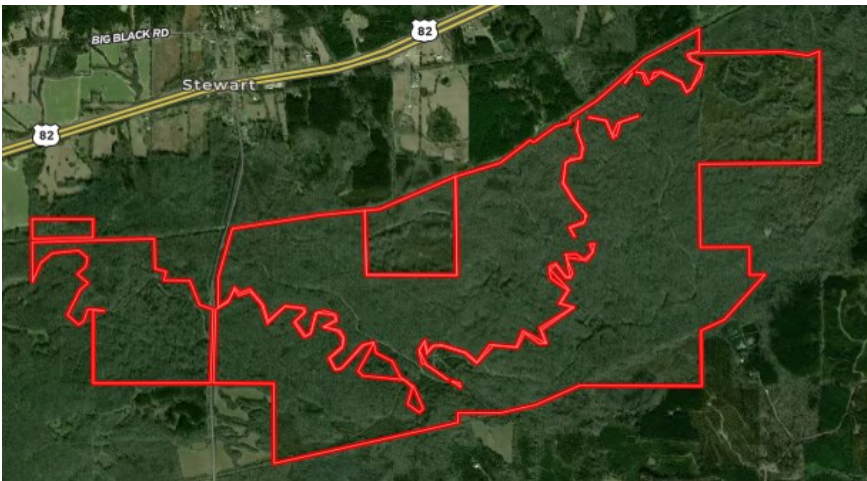




Ownership Map



Topography Map



Leased Property

CHARLIE HEINSZ

REALTOR®

Office: 662.441.2500

Cell: 662.719.7218

Charlie@TomSmithLand.com



A Real Estate Expert You Can Trust

TomSmithLandandHomes.com

Information is believed to be accurate but not guaranteed.

