

FIELD EOC = 1' IN 165,247'
 ANGULAR ERROR = 01' / 4 B.I.
 ADJUSTED BY COMPASS RULE
 PLAT EOC = 1' IN 252,533'
 EQUIPMENT USED:

TOPCON GTS-303
 TC-98 DATA COLLECTOR
 MAGNETIC LOCATOR

LEGEND:

CMF CONCRETE MONUMENT FOUND
 N/F NOW OR FORMERLY
 RBF REBAR FOUND
 RBS REBAR SET

SUBJECT PROPERTY IS CURRENTLY
 ZONED AG-5.

SURVEYED BY:

NEVIL LAND SURVEYING, INC.

519 MILLER ST. EXT.
 STATESBORO, GA. 30458
 PHONE: 912-764-9095
 FAX: 912-764-9492
 MOBILE: 912-682-7551

MARLIN NEVIL, GA. R.L.S. NO. 2524

SURVEY OF:

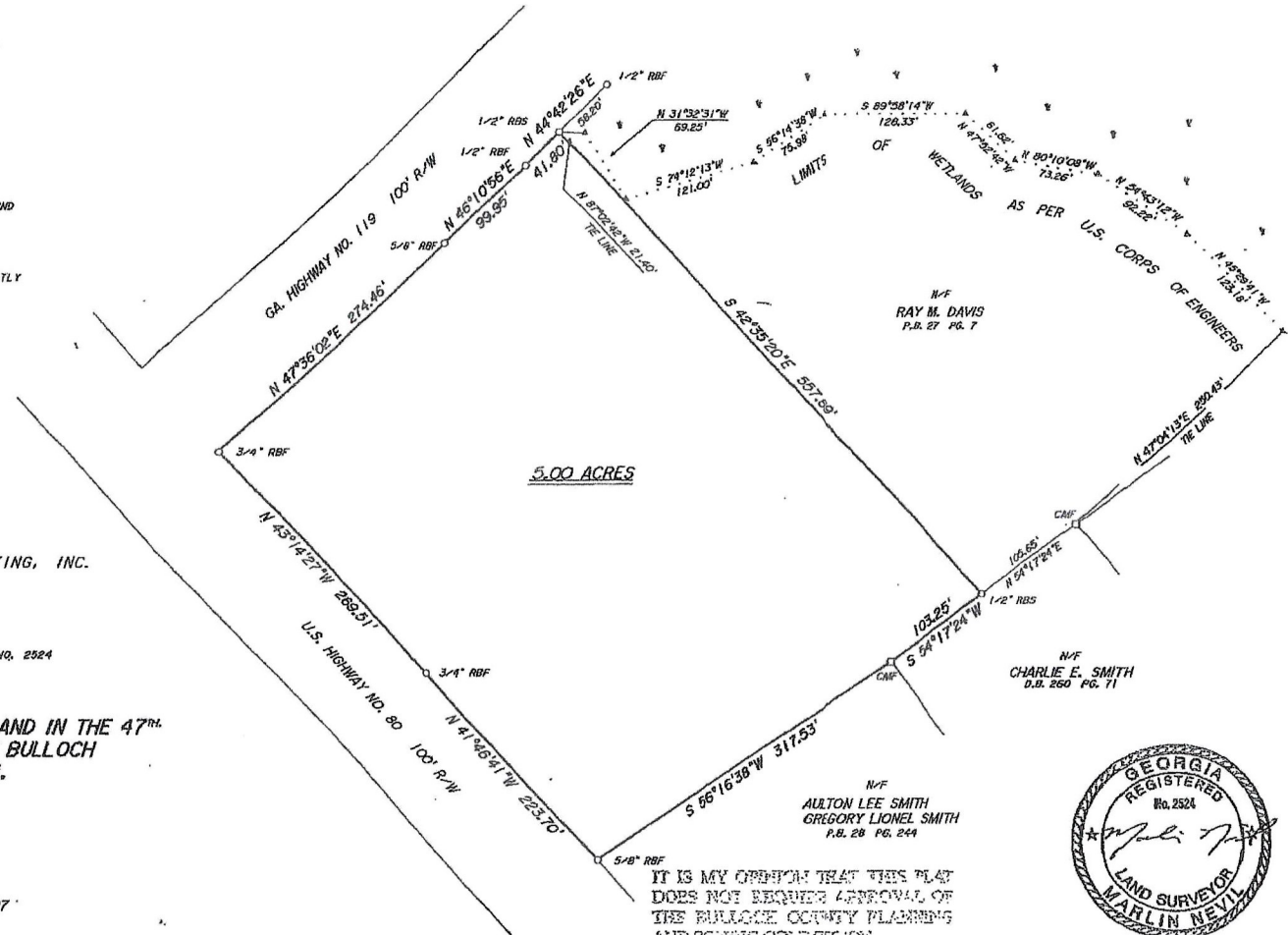
5.00 ACRES OF LAND IN THE 47TH
 G.M. DISTRICT OF BULLOCH
 COUNTY, GEORGIA.

SURVEY FOR:

RAY M. DAVIS

DATE: FEBRUARY 19, 1997

SCALE: 1" = 100'



IN MY OPINION, THIS PLAT IS A CORRECT REPRESENTATION OF THE LAND PLATTED AND HAS BEEN PREPARED IN CONFORMANCE WITH THE MINIMUM STANDARDS AND REQUIREMENTS OF LAW.

F.N. 970219RD

REFERENCED NORTH P. B. 27 PG. 7

PB 53/55