

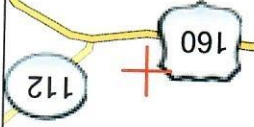
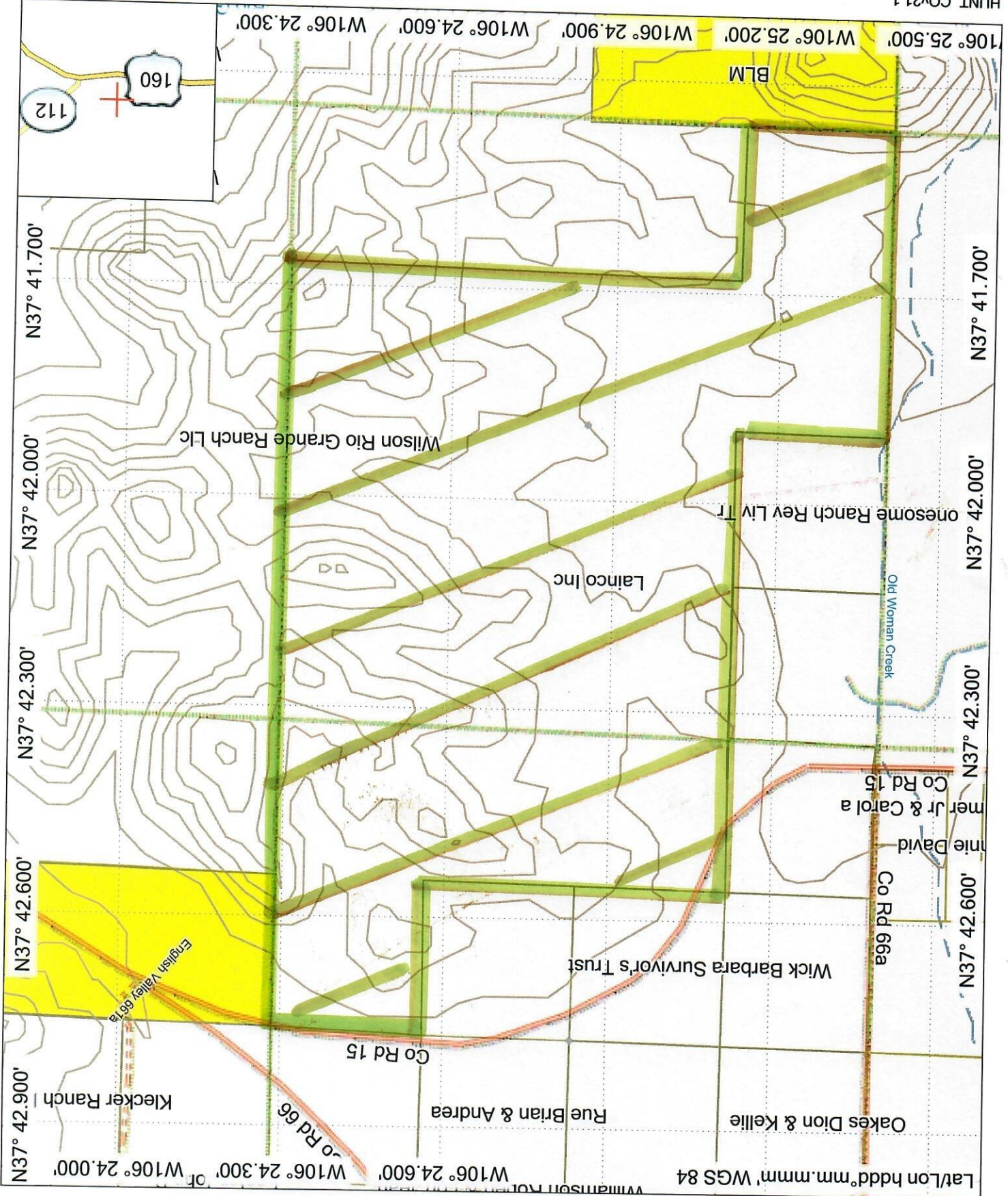
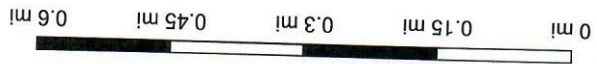
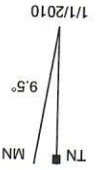
Enter Map Title...
Web Print: 10/26/2023



This map is a user generated static output from an internet mapping site and is for reference only. Data layers that appear on this map may or may not be accurate, current, or otherwise reliable.



©2023 Sidwell. All rights reserved.

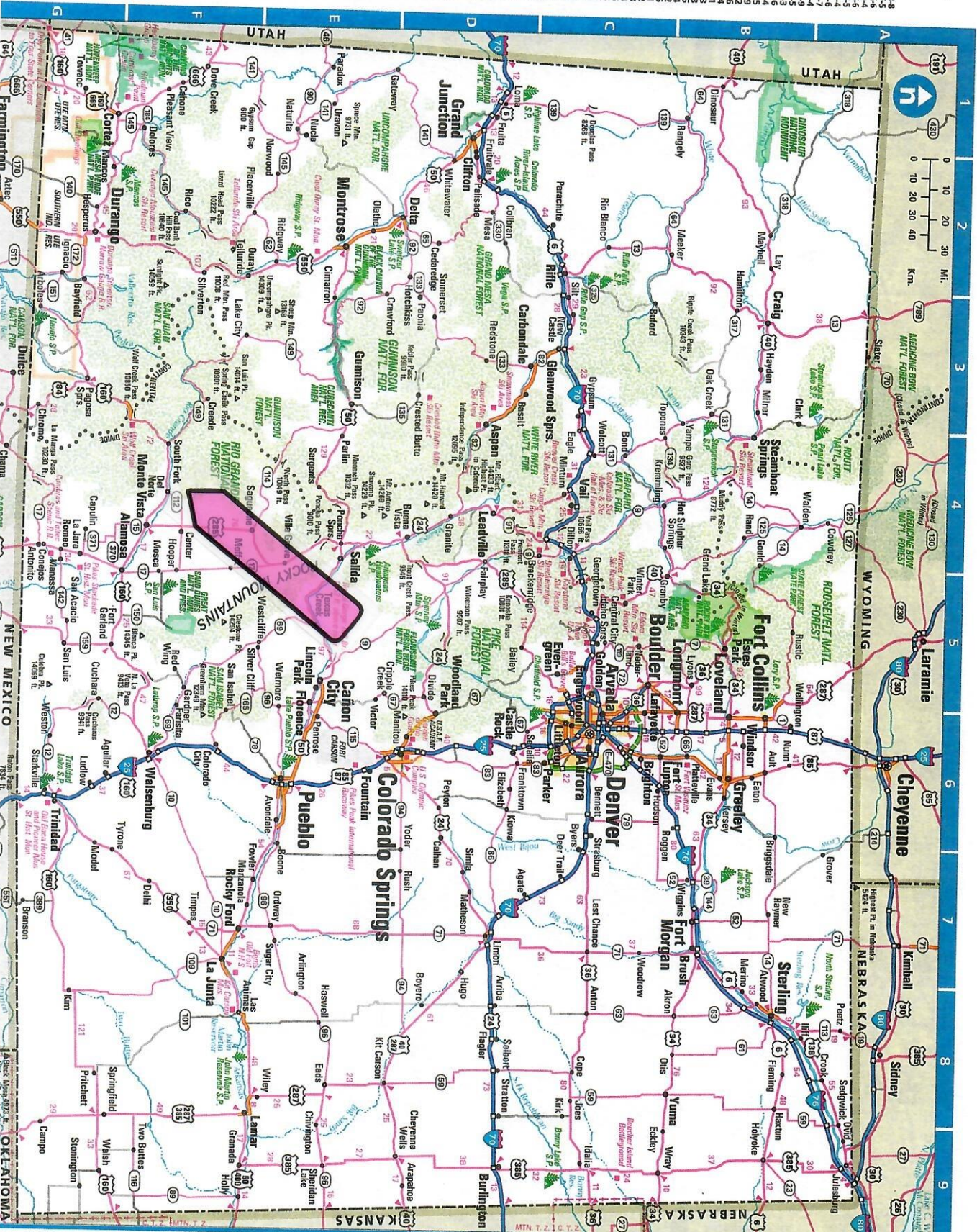


Colorado

Population: 4,426,500 (1/01 estimate)
 Land Area: 103,729 sq. mi.
 Capital: Denver

Cities and Towns

- Akron
- Alamosa
- Aurora
- Boulder
- Breckenridge
- Burlington
- Canon City
- Castle Rock
- Center
- Central City
- Cheriffe Wells
- Colorado Springs
- Conjoco
- Cortez
- Craig
- Cripple Creek
- Del Norte
- Demer
- Dove Creek
- Durango
- Edwards
- Englewood
- Essex Park
- Evergreen
- Fairplay
- Fort Collins
- Fort Lupton
- Four Corners
- Fruita
- Georgetown
- Golden
- Grand Junction
- Greenway
- Gunnison
- Hacienda
- Hugo
- Idaho Springs
- Julesburg
- Lafayette
- Lamar
- Leadville
- Limon
- Litch Park
- Longmont
- Lowland
- Lyon
- Manitou Springs
- Manitou
- Montrose
- Ordway
- Palmer Park
- Pitkinville
- Pueblo
- Randy
- Riley
- Roady Ford
- Saguache
- San Juan
- Silverton
- Steamboat Spgs.
- Steamboat
- Telluride
- Trinidad
- Wail
- Walsby
- Wellington
- Westcliffe
- Windsor
- Woodward
- Worland



Express Access Code:
 Randomly.c