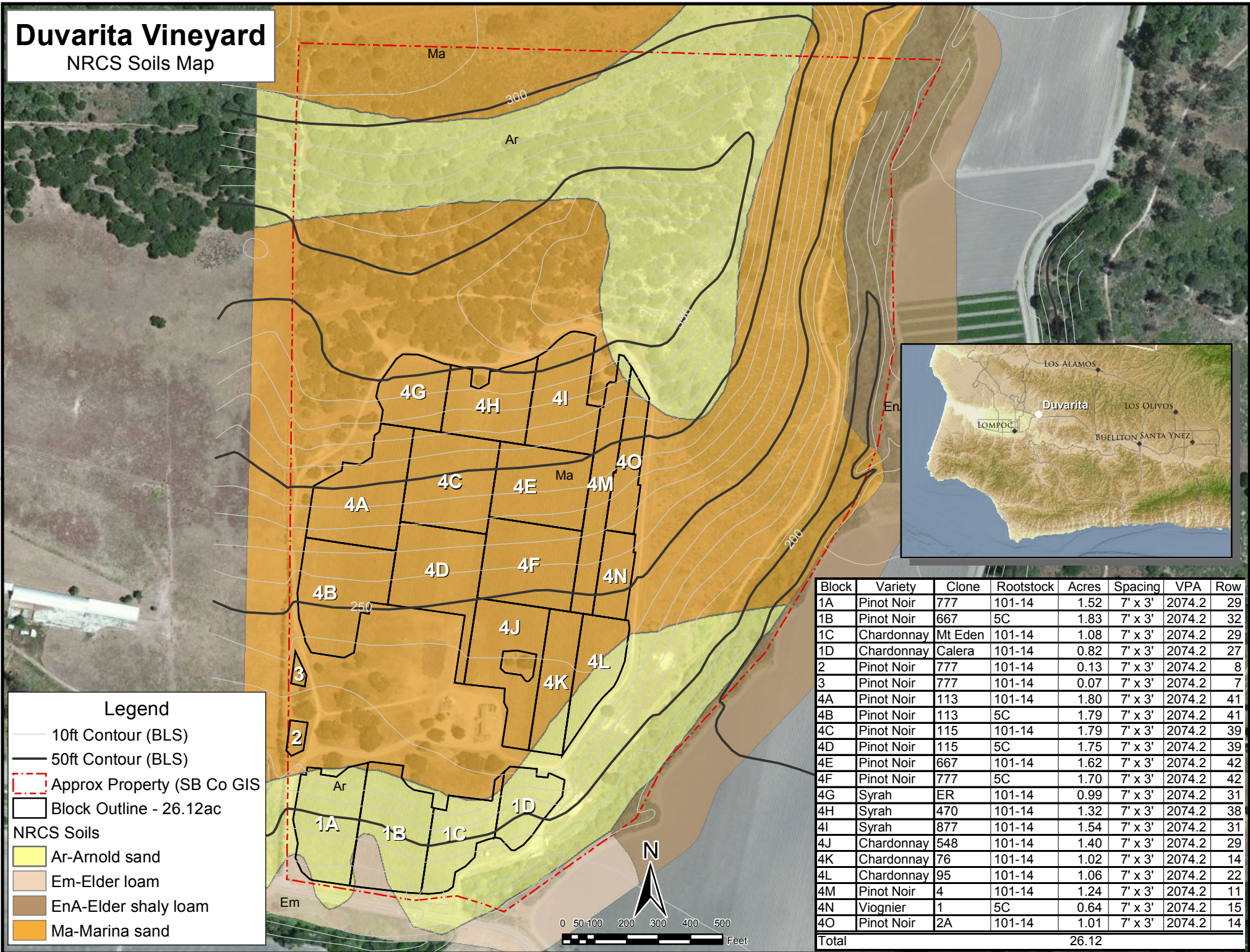


Duvarita Vineyard

NRCS Soils Map



Legend

- 10ft Contour (BLS)
- 50ft Contour (BLS)
- Approx Property (SB Co GIS)
- Block Outline - 26.12ac

NRCS Soils

- Ar-Arnold sand
- Em-Elder loam
- EnA-Elder shaly loam
- Ma-Marina sand

Block	Variety	Clone	Rootstock	Acres	Spacing	VPA	Row
1A	Pinot Noir	777	101-14	1.52	7' x 3'	2074.2	29
1B	Pinot Noir	667	5C	1.83	7' x 3'	2074.2	32
1C	Chardonnay	Mt Eden	101-14	1.08	7' x 3'	2074.2	29
1D	Chardonnay	Calera	101-14	0.82	7' x 3'	2074.2	27
2	Pinot Noir	777	101-14	0.13	7' x 3'	2074.2	8
3	Pinot Noir	777	101-14	0.07	7' x 3'	2074.2	7
4A	Pinot Noir	113	101-14	1.80	7' x 3'	2074.2	41
4B	Pinot Noir	113	5C	1.79	7' x 3'	2074.2	41
4C	Pinot Noir	115	101-14	1.79	7' x 3'	2074.2	39
4D	Pinot Noir	115	5C	1.75	7' x 3'	2074.2	39
4E	Pinot Noir	667	101-14	1.62	7' x 3'	2074.2	42
4F	Pinot Noir	777	5C	1.70	7' x 3'	2074.2	42
4G	Syrah	ER	101-14	0.99	7' x 3'	2074.2	31
4H	Syrah	470	101-14	1.32	7' x 3'	2074.2	38
4I	Syrah	877	101-14	1.54	7' x 3'	2074.2	31
4J	Chardonnay	548	101-14	1.40	7' x 3'	2074.2	29
4K	Chardonnay	76	101-14	1.02	7' x 3'	2074.2	14
4L	Chardonnay	95	101-14	1.06	7' x 3'	2074.2	22
4M	Pinot Noir	4	101-14	1.24	7' x 3'	2074.2	11
4N	Viognier	1	5C	0.64	7' x 3'	2074.2	15
4O	Pinot Noir	2A	101-14	1.01	7' x 3'	2074.2	14
Total						26.12	