




## **Loblolly Highlands Phase I**

Acreage lots fronting Jimmy Smith Road in the Collinsville School District. Build your dream home among the majestic towering pines with water and electric services readily available along the paved road frontage. Located only minutes from the Lake Okatibbee Gin Creek Boat Launch, 7 miles from Collinsville and 8 miles from Meridian. This location offers country living at its finest with the convenience of city amenities nearby.



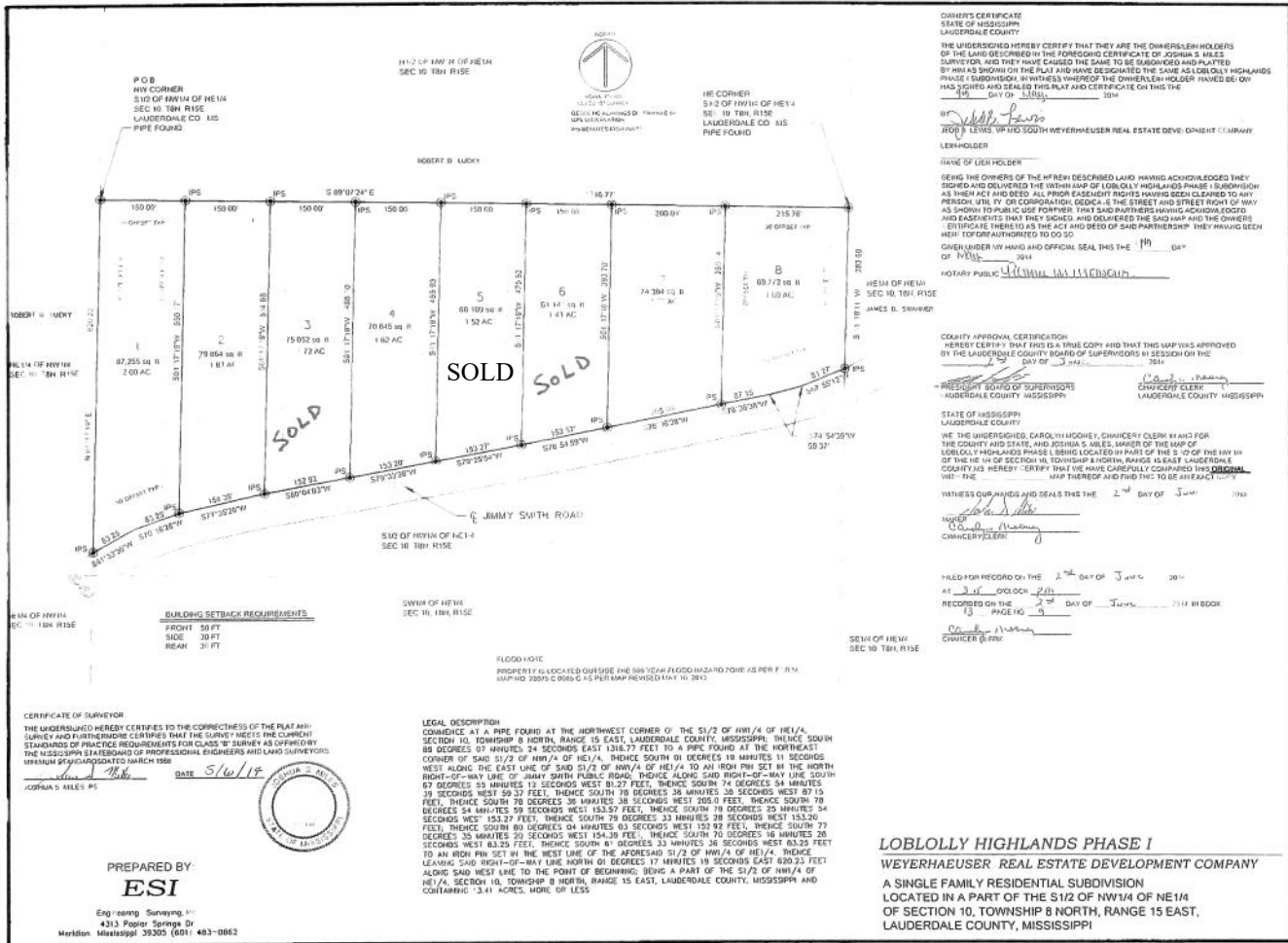
**Sartain's Heritage**  
Properties, LLC.  
www.sartainsheritage.com

**"Guiding Your Land Decisions for Over 60 Years"**  
FARM | TIMBER | HUNTING

**J Parker Sartain—601.506.2398**  
psartain@sartainsheritage.com

**601-856-2720**

All information contained herein is supplied by sources deemed reliable, but is not guaranteed by Sartain's Heritage Properties, its Brokers or Agents. Properties are subject to errors, omissions, correction, price change, prior sale or withdrawal without notice.



- Lot 1 - 2.00 ac. - \$29,500.00
- Lot 2 - 1.83 ac. - \$27,500.00
- Lot 4 - 1.62 ac. - \$31,000.00
- Lot 5 - 1.52 ac. - SOLD
- Lot 7 - 1.71 ac. - \$23,000.00
- Lot 8 - 1.60 ac. - \$23,500.00

**CONTACT: J PARKER SARTAIN 601.506.2398**

All information contained herein is supplied by sources deemed reliable, but is not guaranteed by Sartain's Heritage Properties, its Brokers or Agents. Properties are subject to errors, omissions, correction, price change, prior sale or withdrawal without notice.