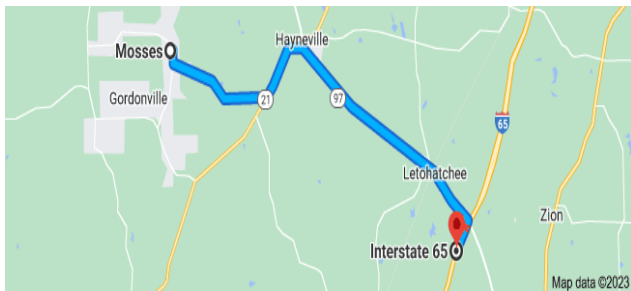
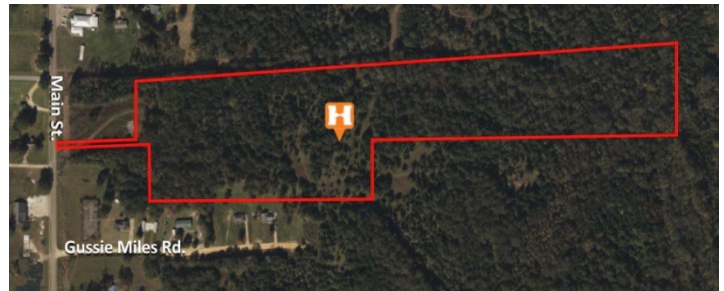


21+/- Gorgeous Acres in Lowndes County, Alabama



20min (16.5 mi) via Co Rd 2 and AL-97 from Interstate 65



Location of property outlined in **RED** (as per Lowndes County, AL public record)

If you love nature and the great outdoors **LOOK NO FURTHER, THIS BEAUTIFUL SLICE OF NATURE HAS YOUR NAME ON IT !!!!!!!** This **RARE PROPERTY FIND** located in the Town of Mosses area is **A MUST SEE !!!**

PROPERTY FEATURES

- Just off Lowndes County Road 2
- Close to public water and sewage
- Private wooded acreage with lots of pine, hardwood and ornamental trees
- Just a stones away from the state capitol in Montgomery, Alabama
- Approximately 31+/- miles to Selma, Alabama

SALES PRICE \$79,900

For more information, call Chris Palmer today at 334-322-7283 !!!