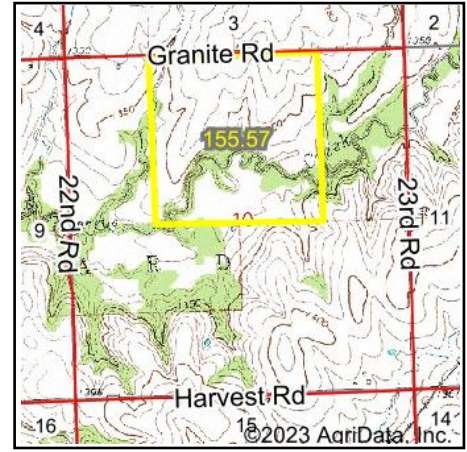
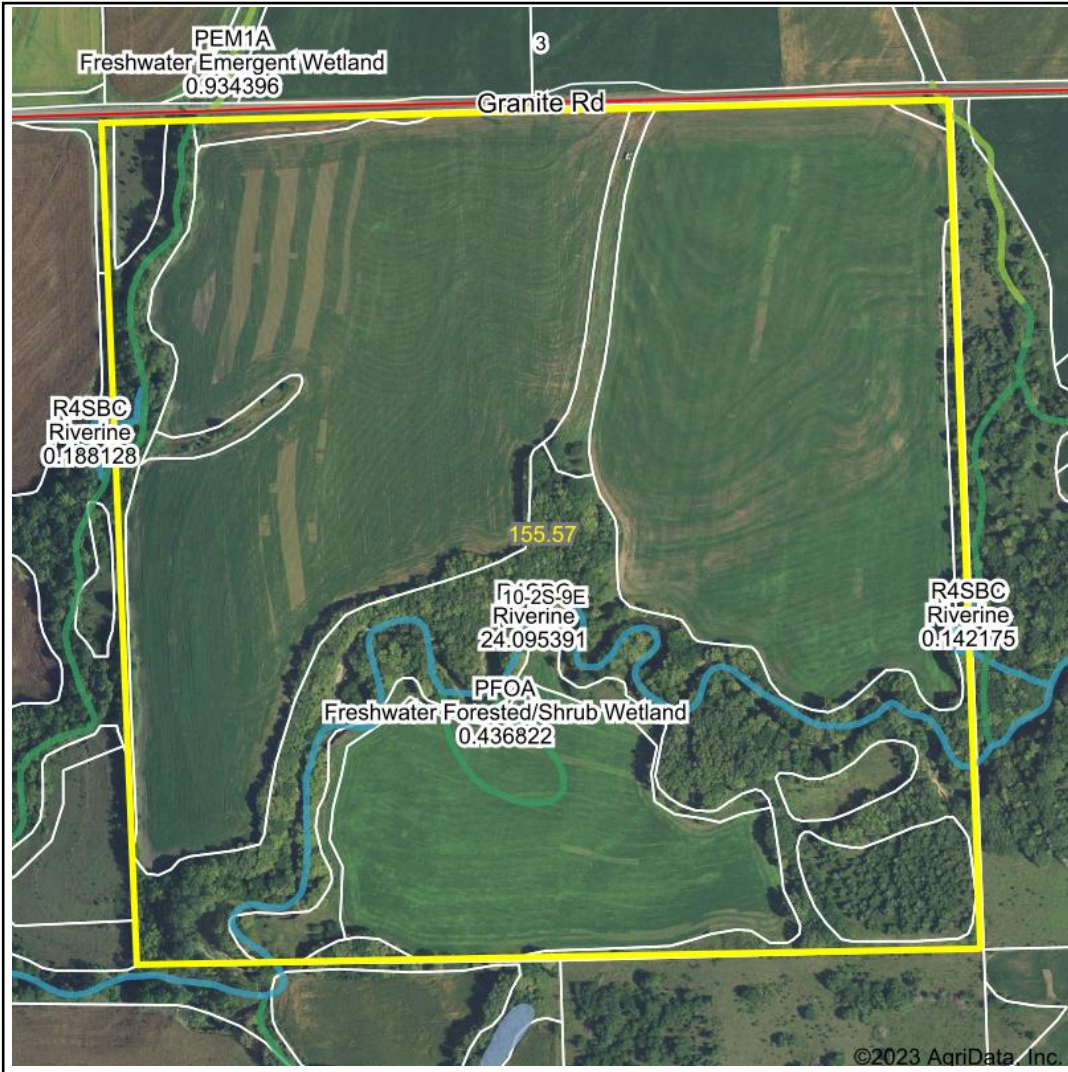


# Wetlands Map



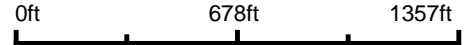
**State:** Kansas  
**Location:** 10-2S-9E  
**County:** Marshall  
**Township:** Guittard  
**Date:** 10/27/2023



Maps Provided By:



© AgriData, Inc. 2023 [www.AgriDataInc.com](http://www.AgriDataInc.com)



Classification Code	Type	Acres
R4SBC	Riverine	2.12
PFOA	Freshwater Forested/Shrub Wetland	0.96
PEM1A	Freshwater Emergent Wetland	0.02
Total Acres		3.10

Data Source: National Wetlands Inventory website. U.S. DoI, Fish and Wildlife Service, Washington, D.C. <http://www.fws.gov/wetlands/>