

# 39483 & 39489 Kingston Jordan Rd. Scio, OR



## PROPERTY FEATURES

- ±334.41-ac Private Property
- 2 homes:
  - 1,680 SF farmhouse (3bd, 1.5ba) blt 1937;
  - 1,967 SF triple wide (3bd, 2ba) blt 2008
- 3,072 SF Shop w/full bath, heated tack room, finished upper level
- Steel Frame GP Buildings, Machine Shed, and Various Barns and Sheds
- Cropland with class 2 & 3 soils
- Fenced, cross-fenced pastures w/water plumbed to each pasture
- Scenic timberland
- Views overlooking the foothills & farmland

## VIDEO TOUR LINK

<https://vimeo.com/819648148>

## CALL FOR DETAILS

Find us on  Instagram

AMY PENDLEY  
PRINCIPAL BROKER/CO-OWNER  
503.910.4689  
AMY@AGRIBIS.COM



TERRY SILBERNAGEL  
PRINCIPAL BROKER/CO-OWNER  
503.559.3200  
TERRY@AGRIBIS.COM

# 39483 & 39489 KINGSTON JORDAN RD, SCIO

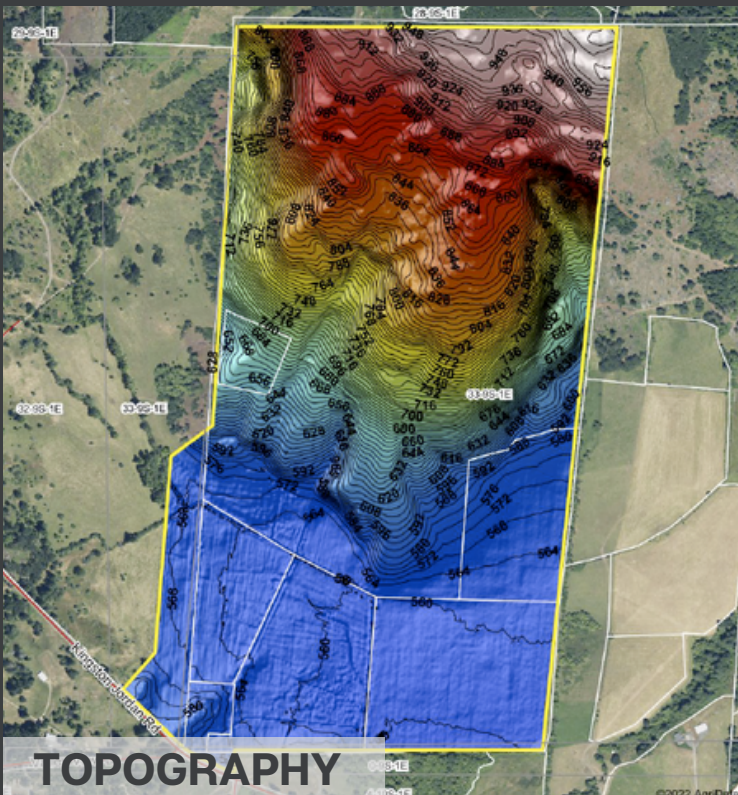
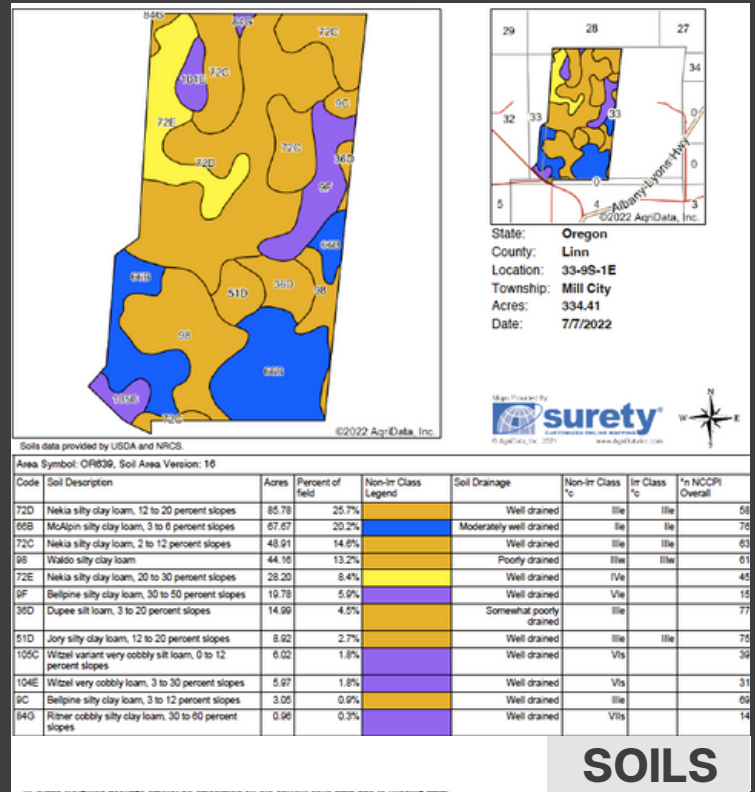
*Private setting amongst 334+ acres of farmland, pasture, and timberland with views overlooking the foothills. Enjoy the seclusion and wildlife just 30 minutes from Salem and Albany, and 10 minutes from Stayton. Nicely landscaped with seasonal streams. Two homes, 1,680 SF farmhouse (3 bedrooms, 1 1/2 bathrooms) and a beautifully updated 1,967 SF 2008 triple-wide manufactured home (3 bedrooms +office/2 bathrooms). 2-story shop with heated tack room, finished storage rooms, and woodstove; 3-GP buildings; machine shed; 4-stall horse barn with paddocks; plus various barns and sheds. Fenced and cross-fenced pastures with water plumbed to each.*



**AGRIBIS.COM**

This information deemed reliable, but not guaranteed. All maps, exhibits, and water rights presented are based on information obtained from the county and OWRD and should be verified by interested parties.

# MAPS & INFORMATION



**AGRIBIS.COM**

This information deemed reliable, but not guaranteed. All maps, exhibits, and water rights presented are based on information obtained from the county and OWRD and should be verified by interested parties.

# EXCLUDED ITEMS

- Panels around the horse barn
- Silo
- Portable Stalls
- Flower pots
- Milk jugs
- Washer and dryer units (including in the shop)
- All freezers in the shop
- Shipping container
- Feeders located on the rock and by the Red barn
- Squeeze chute
- Pallet racking in Blue barn
- Pile of large boulders by Red barn
- Gates or panels that are not attached

# RECENT IMPROVEMENTS

- New roof and plywood sheathing on the shop
- New roof and plywood sheathing on the Blue barn
- New overhead doors on the barn
- New lighting in the barn

