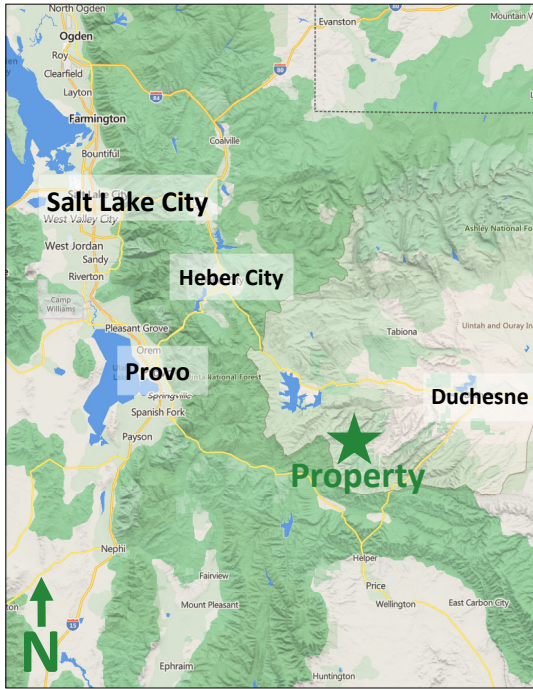


New Listing

See more information at www.highlandranches.com

Soldier Summit Mountain Land

80 acres in Wasatch County, Utah



EXECUTIVE SUMMARY:

List Price: \$140,000

Mike Nelson | Amy Fromm
801-482-7565 | mike@hciutah.com

Notice: This information is believed to be accurate, but no warranty is expressed or implied. Highland Commercial insists that interested parties conduct their own research and investigations. The property is offered subject to prior sale, price change, and withdrawal without notice. No obligations will be created unless a purchase contract is signed by both buyer and seller. We welcome the cooperation of participating brokers; please contact us for our commission-sharing policies. All images and materials are copyright protected and are the property of Highland Commercial.

- Unique 80-acre ranch property eight miles NE of Soldier Summit, Utah
- Views of Ashley National Forest & West Fork Avintaquin Creek
- Surrounded by private land & Utah Division of Wildlife Resources
- Zoned P-160 (Preservation - 160-acre min lot size) in Wasatch County
- No water rights owned by Seller
- Limited access to property & surrounding area (see enclosed map)
- Wasatch County parcel: 00-0011-0531 (2023 taxes: \$8.64)
- Elevation ranges from 7,400 to 8,200 feet
- 24 miles from Price, 28 miles from Duchesne
- 36 miles from Spanish Fork, 40 miles from Provo
- 72 miles from Salt Lake City



Highland Commercial, Inc.

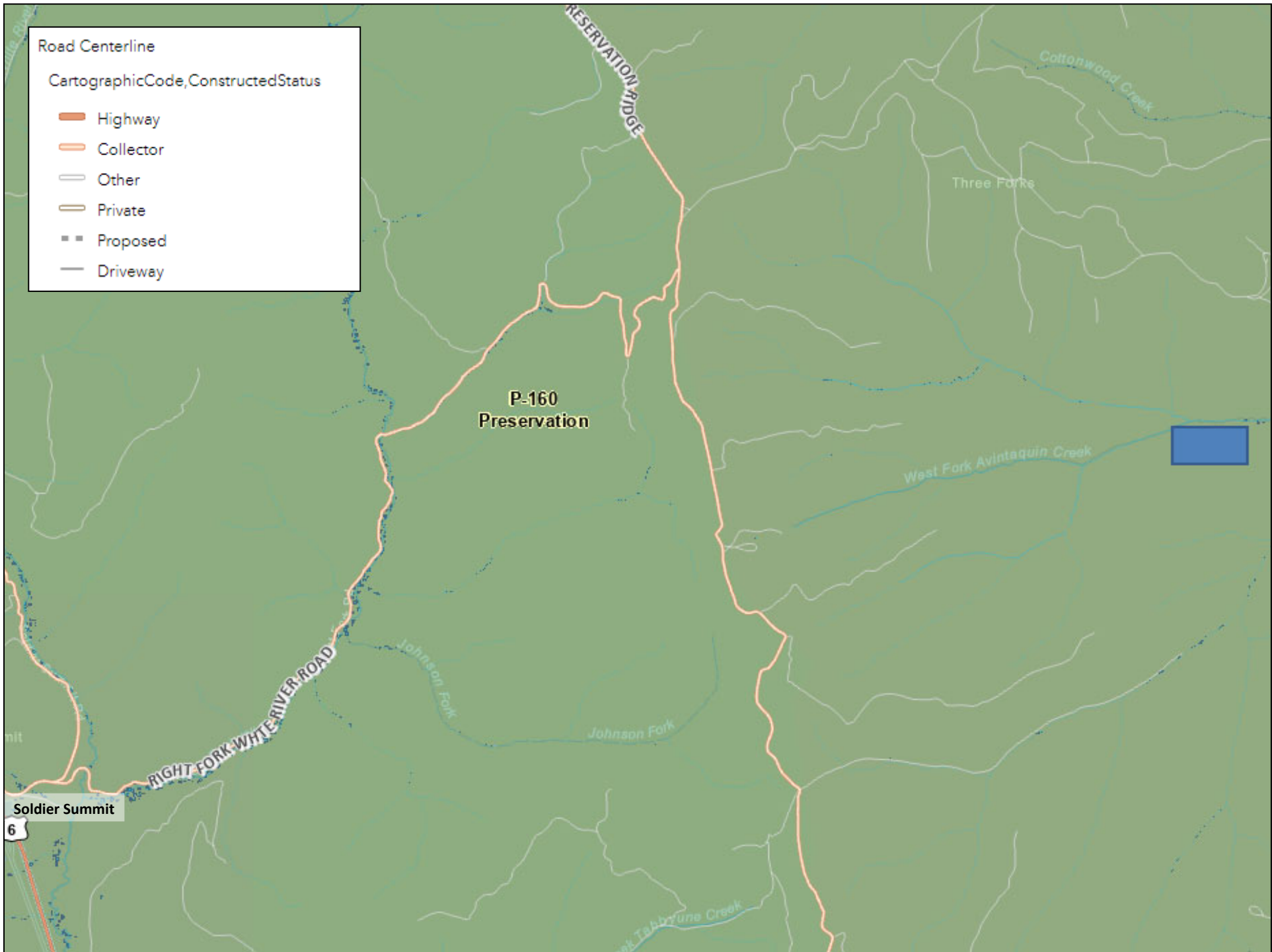
2733 East Parley's Way, Suite 208

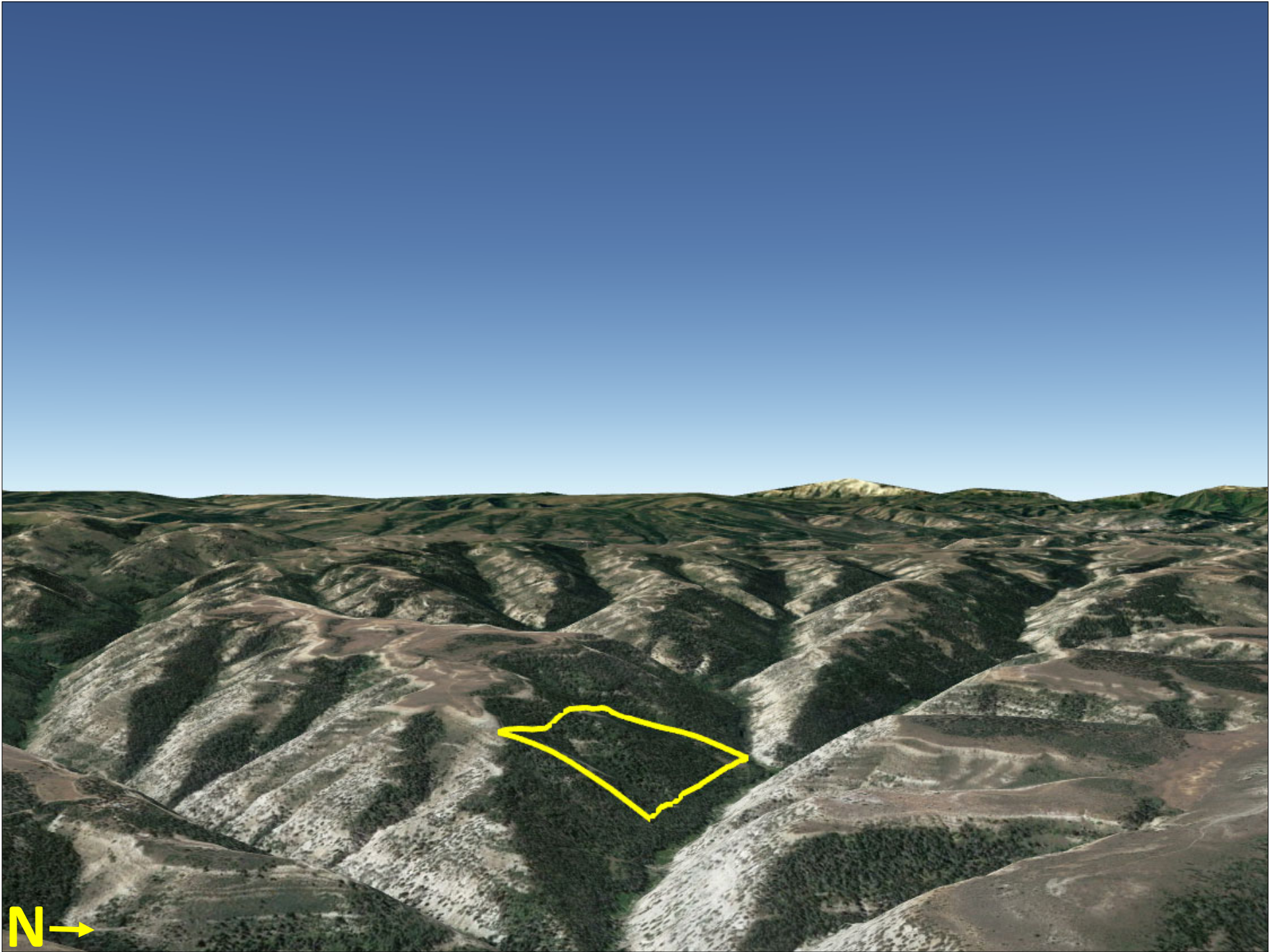
Salt Lake City, UT 84109

801-487-6100

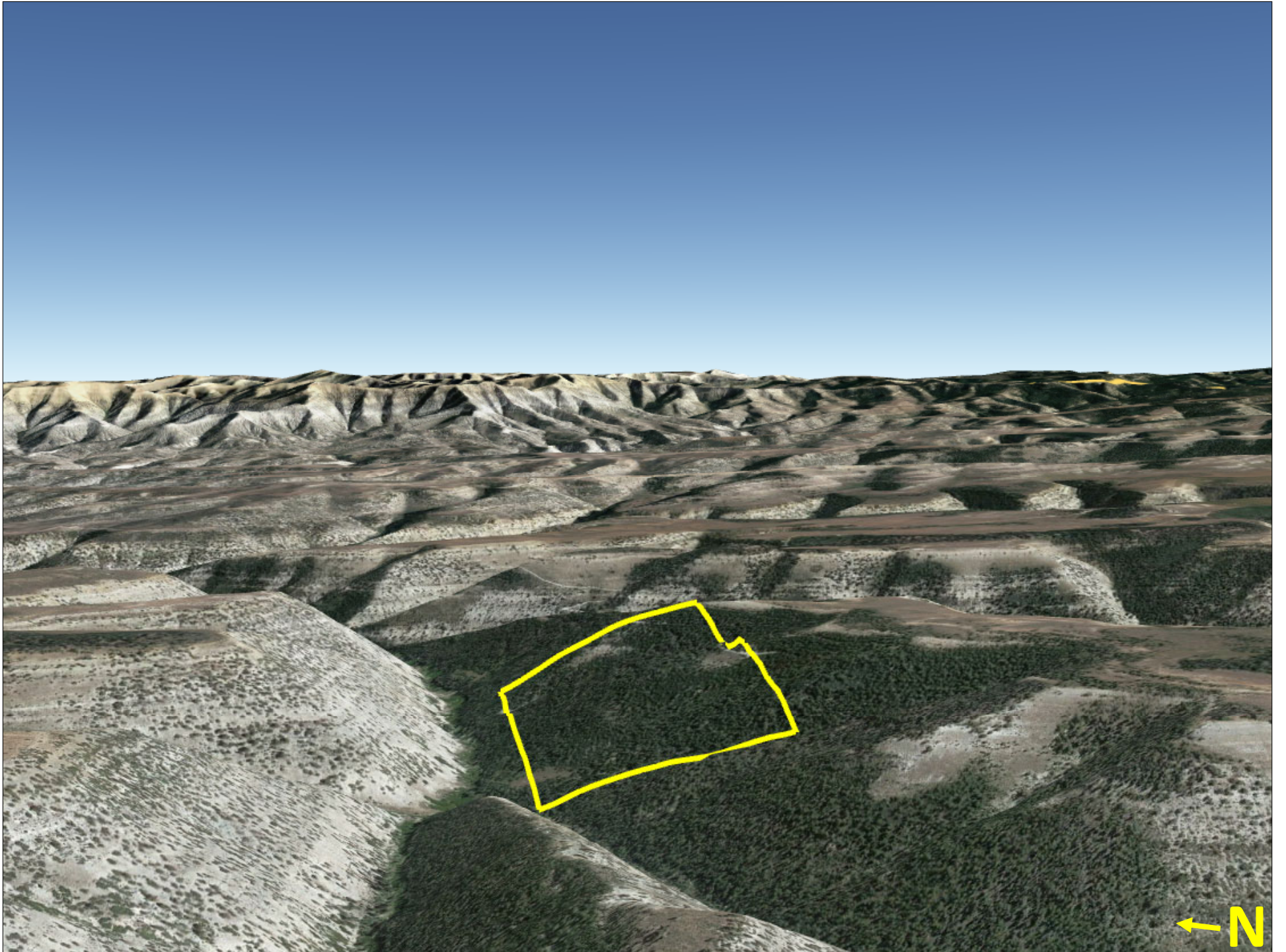
www.highlandranches.com







N →







Provo

Spanish Fork

Strawberry Reservoir

Soldier Summit

Property

N

